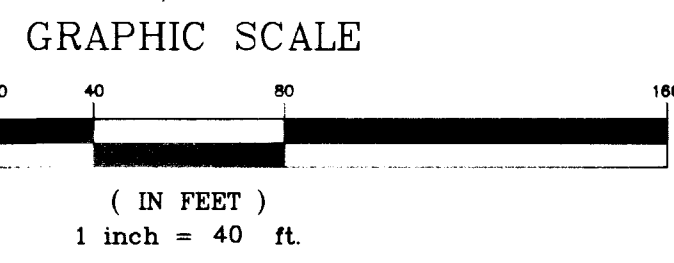
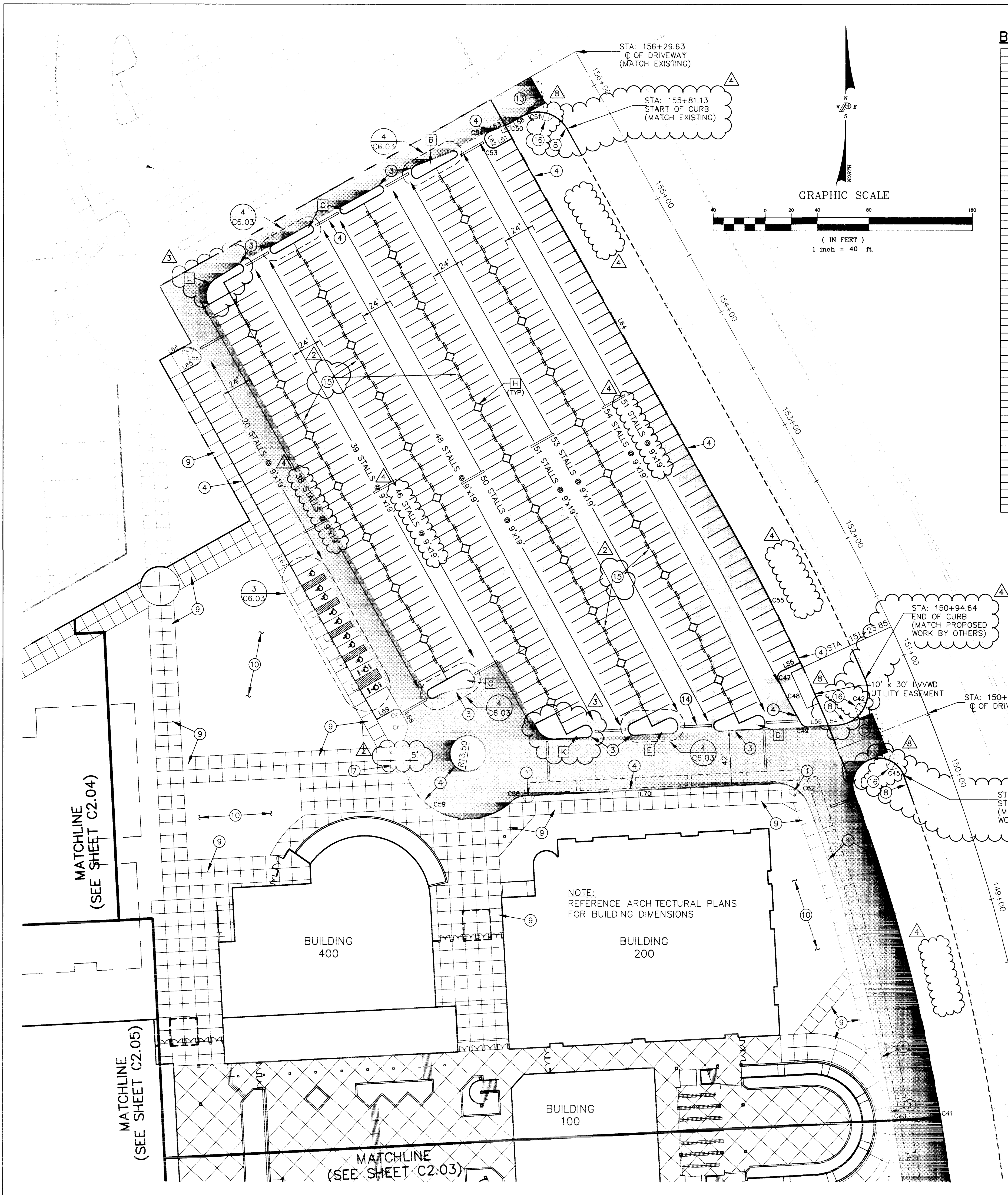


SCALE: 1" = 40'
 FILE: P2630C-SLING.PP, C202, AR, 2630C SITE PLAN - 3, 2630 SITE 1

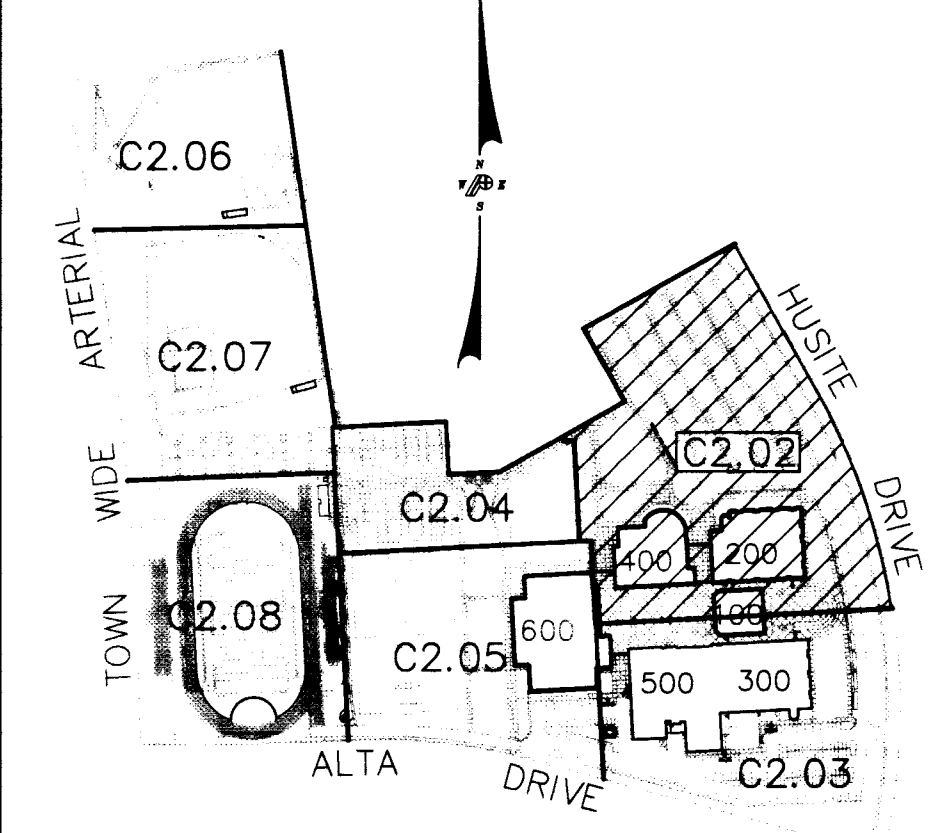


BACK OF CURB CURVE TABLE

CURVE	RADIUS	LENGTH	TANGENT	DELTA
C1	25.00	38.82	24.55	88°58'00"
C2	25.00	39.61	25.35	90°47'26"
C3	25.00	46.48	33.50	108°31'55"
C4	1245.75	362.53	182.56	18°40'28"
C5	1298.00	355.43	178.84	15°41'24"
C6	5.00	7.85	5.00	90°00'00"
C7	5.00	9.40	5.85	107°45'56"
C8	3.08	3.67	<infinite>	180°00'00"
C9	5.00	7.85	5.00	90°00'00"
C10	24.50	32.71	19.31	76°29'04"
C11	3.60	4.60	3.60	90°00'00"
C12	15.00	13.69	7.36	52°17'33"
C13	4.00	6.28	4.00	90°00'00"
C14	4.00	6.28	4.00	90°00'00"
C15	4.00	12.57	<infinite>	180°00'00"
C16	4.00	12.57	<infinite>	180°00'00"
C17	5.00	6.27	3.62	71°49'00"
C18	5.00	7.85	5.00	90°00'00"
C19	1375.00	103.28	51.66	24°18'13"
C20	5.00	7.84	4.98	89°49'00"
C21	1416.00	20.00	10.00	90°48'36"
C22	20.00	33.80	22.54	96°50'29"
C23	19.50	28.31	17.31	83°10'37"
C24	1416.00	20.00	10.00	90°48'36"
C25	20.00	30.05	18.68	86°05'17"
C26	19.50	31.97	20.89	93°58'02"
C27	4.00	6.26	3.98	89°40'18"
C28	4.50	8.55	5.29	108°49'08"
C29	5.00	7.85	5.00	90°00'00"
C30	4.50	12.72	28.41	162°00'00"
C31	3.50	5.50	3.50	89°59'58"
C32	3.50	5.50	3.50	90°00'00"
C33	5.00	7.86	5.00	90°00'00"
C34	3.50	5.50	3.50	90°00'00"
C35	3.50	5.50	3.50	89°59'58"
C36	5.00	7.85	5.00	89°59'08"
C37	5.00	26.37	3.65	72°21'23"
C38	22.31	25.02	14.01	64°15'27"
C39	5.00	7.85	5.00	90°00'00"
C40	1338.00	501.28	253.61	21°27'58"
C41	1375.00	513.99	259.99	21°24'52"
C42	25.00	48.30	36.17	110°41'45"
C43	1416.00	20.00	10.00	90°48'36"
C44	1416.00	20.00	10.00	90°48'36"
C45	10.00	62.83	32.50	180°00'00"
C46	10.00	36.58	22.50	107°58'51"
C47	5.00	8.18	5.34	93°46'55"
C48	508.83	37.28	18.65	04°11'53"
C49	5.00	7.85	5.00	90°00'00"
C50	25.50	3.32	1.66	07°27'58"
C51	25.00	39.27	25.00	90°00'00"
C52	5.00	7.85	5.00	90°00'00"
C53	5.00	6.51	5.70	97°27'58"
C54	5.00	6.51	5.70	97°27'58"
C55	1376.50	119.14	59.61	04°57'32"
C56	5.00	7.64	4.79	87°34'24"
C57	11.50	18.42	11.86	91°45'48"
C58	15.00	10.55	5.50	40°16'50"
C59	50.50	136.83	230.06	155°14'19"
C60	5.00	4.50	2.41	51°31'35"
C61	3.50	5.50	3.50	90°00'00"
C62	25.00	31.58	18.29	72°22'57"

BACK OF CURB LINE TABLE

LINE	DIRECTION	DISTANCE
L1	N88°01'31"E	65.79
L2	N88°01'31"E	124.48
L3	N03°00'00"W	26.50
L4	N02°49'00"W	63.91
L5	N15°11'00"E	14.50
L6	N74°49'00"W	4.98
L7	N02°49'00"W	75.99
L8	N02°49'00"W	15.78
L9	N74°49'00"W	127.00
L10	N15°11'00"E	14.00
L11	N74°49'00"W	3.58
L12	N87°11'00"E	153.97
L13	N02°49'00"W	9.16
L14	N87°11'00"E	6.06
L15	N02°49'00"W	18.63
L16	N87°11'00"E	223.38
L17	N74°49'00"W	127.00
L18	N15°11'00"E	15.00
L19	N74°49'00"W	5.00
L20	N15°11'00"E	35.00
L21	N74°49'00"W	145.00
L22	N15°11'00"E	15.00
L23	N15°11'00"E	15.00
L24	N74°49'00"W	145.00
L25	N15°11'00"E	15.00
L26	N15°11'00"E	15.00
L27	N03°00'00"W	16.58
L28	N74°49'00"W	1.69
L29	N15°11'00"E	14.00
L30	N87°00'00"E	234.00
L31	N87°00'00"E	25.90
L32	N02°49'00"W	14.03
L33	N87°11'00"E	4.50
L34	N02°49'00"W	69.78
L35	N74°55'10"W	87.04
L36	N03°44'18"W	12.33
L37	N87°04'50"E	54.03
L38	N02°43'06"W	14.00
L39	N87°04'50"E	28.12
L40	N87°00'00"E	178.82
L41	N02°59'58"W	15.00
L42	N87°00'00"E	7.79
L43	N02°59'58"W	15.00
L44	N86°59'06"E	8.22
L45	N03°00'00"W	15.75
L46	N02°59'58"W	15.00
L47	N86°46'06"E	1.05
L48	N02°59'58"W	15.00
L49	N86°59'06"E	8.23
L50	N03°00'00"W	19.26
L51	N87°00'00"E	162.00
L52	N48°00'00"W	11.63
L53	N03°00'59"W	14.00
L54	N87°12'21"E	7.29
L55	N85°32'36"E	15.95
L56	N87°12'21"E	15.33
L57	N88°03'58"E	0.79
L58	N60°36'00"E	10.90
L59	N29°24'00"W	20.00
L60	N29°24'00"W	14.00
L61	N60°36'00"E	15.50
L62	N29°24'00"W	2.59
L63	N68°03'58"E	13.46
L64	N29°24'00"W	351.37
L65	N60°36'00"E	14.00
L66	N60°36'00"E	6.83
L67	N29°24'00"W	331.07
L68	N29°24'00"W	10.11
L69	N60°36'00"E	15.50
L70	N87°10'06"E	193.90



KEY PLAN

DISCLAIMER

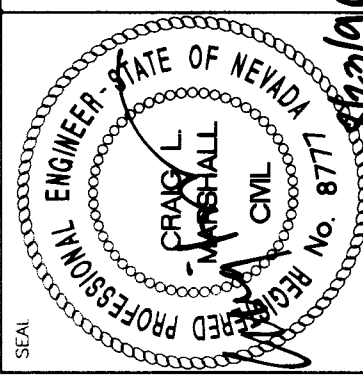
- CIVIL PLAN BUILDING 500. ALL OTHER BUILDINGS AND SPORT FACILITIES ARE TIED IN ACCORDANCE WITH ARCHITECTURAL PLANS. ENGINEER ASSUMES NO RESPONSIBILITY FOR ARCHITECTURAL HORIZONTAL CONTROLS.
- ALL OFF-SITE IMPROVEMENTS THAT ARE NOT NOTED OR DEFINED ON THE CIVIL DWGS. INCLUDING OFF-SITE IMPROVEMENTS TO HUISITE DRIVE, LANDSCAPE PARKWAY ALTA DRIVE, ETC. ARE NOT IN THIS CONTRACT AND ARE BY OTHERS.

CONSTRUCTION NOTES

- LEGAL DESCRIPTION ON SHEET C1.01
- ALL EXISTING MONUMENTS MUST BE MAINTAINED OR RESTORED IF DISTURBED.
- DIMENSIONS ON SITE PLAN ARE SHOWN FROM BACK OF CURB, UNLESS NOTED OTHERWISE.

KEY NOTES

- CONSTRUCT SIDEWALK RAMP REF: (4) C6.01
- CONCRETE RETAINING WALL REF: (5) C6.02, (5) C6.03
- CONSTRUCT ON-SITE "A" TYPE ISLAND CURB REF: (3) C6.01, ISLAND TYPES NOTED THUS [X]. SEE SHEET C6.03
- CONSTRUCT ON-SITE "L" TYPE CURB AND GUTTER REF: (3) C6.01
- CONCRETE STAIRS AND RAMPS, SEE ARCHITECTURAL DWGS.
- PROVIDE 3' WIDE VALLEY GUTTER REF: (8) C6.02
- CONSTRUCT 16" WIDE CURB RECESS REF: (7) C6.01
- CONSTRUCT OFF-SITE "L" TYPE CURB AND GUTTER REF: (6) C6.01
- CONCRETE ON-SITE SIDEWALK. SEE ARCHITECTURAL DWGS FOR PATTERN AND LOCATION OF JOINTING. REF: (1) C6.01
- LANDSCAPING - SEE LANDSCAPE DRAWINGS.
- CONCRETE CURB WITH CHAIN LINK FENCE. SEE ARCHITECTURAL DWGS.
- ON-SITE PAVING. REF: (6) C6.02
- CONCRETE OFF-SITE DRIVEWAY. SEE CLARK COUNTY AREA DWG NO 228.
- FOR ON-SITE SPEED BUMP. REF: (7) C6.02
- PRECAST CONCRETE STOPS - SEE SPECIFICATION.
- RECESSED CURB PER SUMMERLIN STD. DWG. NO. S-75.



PROJECT NO.	0846
DATE	4.16.96
DRAWN BY	BKP
CHECKED BY	CLM
SUBMITTED BY	BID SET
PROJECT NO.	95263C

POGEMEYER DESIGN GROUP
 ENGINEERS PLANNERS SURVEYORS
 200 NORTH TOWNWAY, SUITE 100, LAS VEGAS, NEVADA 89102 (702) 738-8800

TATE & SNYDER ARCHITECTS
 709 VALLE VERDE COURT
 HENDERSON NEVADA 89014
 (702) 456.3000

CLARK COUNTY SCHOOL DISTRICT
 CONSTRUCTION MANAGEMENT DEPARTMENT 4828 S. PEARL STREET LAS VEGAS, NEVADA 89121

ALTA/HUALAPAI HIGH SCHOOL
 LAS VEGAS

SITE PLAN - AREA A

C2.02
 4 OF 49

Call before you Dig.
 1-800-227-2800

3054

715-98

