

**TRAFFIC QUANTITIES**

1 BLUE COLORED REFLECTIVE MARKER	3 EA
2 36" R1-1 STOP SIGN	1 EA
3 12" D-3 STREET NAME SIGNS	2 EA
4 W4-2a "NO OUTLET" SIGNS	2 EA
5 R7-1ARR "NO PARKING ANYTIME" SIGNS	6 EA
6 R2-1 "SPEED LIMIT 25" SIGN	1 EA
7 CM-3R SIGNS	7 EA
8 L.E.D. STREETLIGHT, FOUNDATION, POLE AND MAST ARM (250 WATT EQUIVALENT)	2 EA
9 L.E.D. STREETLIGHT, FOUNDATION, POLE AND MAST ARM (100 WATT EQUIVALENT)	6 EA
10 2" STLT CONDUIT WITH (2) #4 & (1) #8 THW COPPER CONDUCTORS	1,190 LF
11 4" FAST INTERCONNECT CONDUIT WITH #8 BARE TRACER WIRE & PULL CHORD	278 LF
12 200 AMP SERVICE PEDESTAL & FOUNDATION	2 EA
13 No. 3-1/2 CONCRETE PULLBOX WITH METAL COVER	1 EA
14 P-30 PULLBOX WITH "FIBER OPTIC" INSCRIBED ON LID.	1 EA
15 8" WIDE WHITE PAINTED LINE	165 LF
16 4" WIDE WHITE PAINTED LINE	102 LF
17 W3620 NO. PARKING, FIRE LANE SIGNS	2 EA

**DRY UTILITY CROSSING NOTE**

- MAINTAIN MINIMUM 12" VERTICAL SEPARATION AT ALL POINTS OF CROSSING  
 - MAINTAIN MINIMUM 3" PARALLEL SEPARATION  
 - ANY EXCAVATION AT BACK OF CURB MUST REMAIN OPEN FOR INSPECTION OF COPPER SERVICE LATERALS. ANY COPPER SERVICE LATERALS KINKED, BENT OR OTHERWISE DAMAGED MUST BE REPLACED FROM THE MAIN TO THE ANGLE METER STOP.

**TRAFFIC CONSTRUCTION NOTES**

- INSTALL BLUE COLORED REFLECTIVE RAISED PAVEMENT MARKER 16" FROM CURB FACE ADJACENT TO THE HYDRANT.
- INSTALL 36" R1-1 STOP SIGN WITH 2 W4-2a "NO OUTLET" SIGNS BACK TO BACK AND (2) 12" D-3 STREET NAME SIGNS. (PRIVATE STREET STANDARDS)
- INSTALL PRIVATE 200 AMP SERVICE PEDESTAL & FOUNDATION PER CCAUSD #300, #331, #332.52 AND #335.52.
- INSTALL R2-1 "SPEED LIMIT 25" SIGN.
- INSTALL EQUALLY SPACED CM-3R SIGNS AT 25' OFF CENTER.
- INSTALL PUBLIC L.E.D. STREETLIGHT AND FOUNDATION (250 WATT EQUIVALENT) PER CCAUSD #314, #320 AND #321.
- INSTALL PRIVATE L.E.D. STREETLIGHT AND FOUNDATION (100 WATT EQUIVALENT) PER CCAUSD #314, #320 AND #321.
- INSTALL PUBLIC 200 AMP SERVICE PEDESTAL & FOUNDATION PER CCAUSD #300, #331, #332.52 AND #335.52.
- INSTALL 2" STLT CONDUIT WITH (2) #4 & (1) #8 THW COPPER CONDUCTORS PER CCAUSD #501.
- INSTALL 4" FAST INTERCONNECT CONDUIT WITH #8 BARE TRACER WIRE & PULL CHORD PER CCAUSD #501.
- INSTALL W3620 NO. PARKING, FIRE LANE SIGN.
- INSTALL P-30 PULLBOX WITH "FIBER OPTIC" INSCRIBED ON LID.
- STUB AND CAP CONDUITS 5' BEYOND BOUNDARY.
- INSTALL 4" WIDE WHITE PAINTED LINE, 1' FROM EDGE OF PAVEMENT.
- INSTALL 8" WIDE WHITE PAINTED LINE, 1' FROM EDGE OF PAVEMENT.

**CONSTRUCTION NOTES**

- CONSTRUCT "L" TYPE CURB & GUTTER PER CCAUSD #216.
- CONSTRUCT 5' WIDE SIDEWALK PER CCAUSD #234.
- CONSTRUCT 8' WIDE VALLEY GUTTER PER CCAUSD #228.
- CONSTRUCT SIDEWALK RAMP USING ARMOR TILE TRUNCATED DOMES OR EQUIVALENT PER CCAUSD #235, CASE I.
- SAWCUT AND MATCH EXISTING ASPHALT.
- STORM WATER STAMP TO BE LOCATED ADJACENT TO DROP INLET PER CCAUSD #12.
- CONSTRUCT "T" TYPE CURB AND GUTTER PER CCAUSD #222 & #224 (LATEST EDITION).
- EXISTING WALL PREVENTS DRAINAGE FROM SITE TO ADJACENT PROPERTY.
- CONSTRUCT R-TYPE CURB & GUTTER PER CCAUSD #222 AND #223 (LATEST EDITION).
- CONSTRUCT TYPE CM2 DROP INLET PER CCAUSD #121. SEE DETAIL ON SHEET 10.
- ADJUST EXISTING FIRE HYDRANT VERTICALLY TO GRADE.
- ADJUST EXISTING CABLE BOX TO GRADE.
- ADJUST EXISTING ELECTRICAL VAULT TO GRADE.
- CONSTRUCT 26" WIDE RESIDENTIAL DRIVEWAY PER CCAUSD #223.
- CONSTRUCT 26" WIDE COMMERCIAL DRIVEWAY PER CCAUSD #224.
- SAWCUT, TRENCH AND PAVEMENT RESTORATION PER CCAUSD #500.5 AND #503.
- PROPOSED WALL WILL PREVENT DRAINAGE FROM SITE TO ADJACENT PROPERTY.



**LEGEND**

SIGHT VISIBILITY ZONE (NOTE: SEE THIS SHEET FOR DIMENSIONS)	L.E.D. STREETLIGHT - GE MODEL #E820HX55740RAYEL OR EQUIVALENT (250 WATT EQUIVALENT)
PROPOSED AC PAVING	L.E.D. STREETLIGHT - GE MODEL #E810CX4040RAY008 OR EQUIVALENT (100 WATT EQUIVALENT)
PROPOSED CONCRETE	4" FAST INTERCONNECT CONDUIT WITH #8 BARE TRACER WIRE & PULL CHORD.
200 AMP SERVICE PEDESTAL AND FOUNDATION	2" STLT CONDUIT WITH (2) #4 & (1) #8 THW COPPER.
P-30 PULL BOX	
No. 3-1/2 PULL BOX	

**SVZ NOTE**

NO WALLS, FENCES, SHRUBS, UTILITY APPURTENANCES OR ANY OTHER OBJECT, OTHER THAN TRAFFIC CONTROL DEVICES, FIRE HYDRANTS, TREES, AND STREET LIGHT POLES, MAY BE CONSTRUCTED OR INSTALLED WITHIN THE SIGHT VISIBILITY ZONE UNLESS SAID OBJECT IS MAINTAINED AT LESS THAN 24 INCHES IN HEIGHT, MEASURED FROM THE TOP OF CURB, OR WHERE NO CURB EXISTS, A HEIGHT OF 27 INCHES MEASURED FROM THE TOP OF ADJACENT ASPHALT, GRAVEL OR PAVEMENT STREET SURFACE.

**BENCHMARK**

CITY OF LAS VEGAS BENCHMARK STATION: OLVR0 26N6  
 RIVET & PLATE IN TOP OF CURB @ NW CORNER OF TORREY PINES & AZURE  
 ELEVATION = 706.598 METERS (NAVD'88 2008 ADJ)  
 ELEVATION = 2318.23 U.S. FEET (NAVD'88 2008 ADJ)

**BASIS OF BEARING**

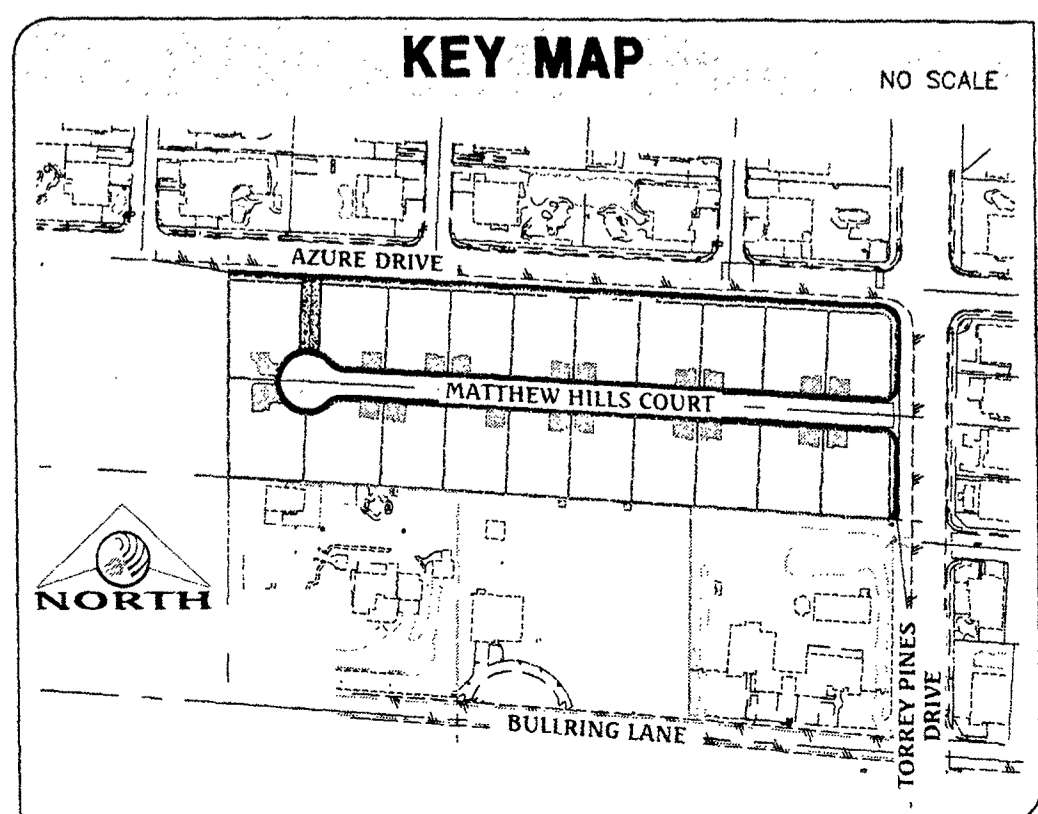
SOUTH 87°14'59" EAST, BEING THE BEARING OF THE NORTH LINE OF THE SOUTHWEST QUARTER (SE 1/4) OF THE NORTHWEST QUARTER (NW 1/4) OF SECTION 26, TOWNSHIP 19 SOUTH, RANGE 60 EAST, M.D.M., CITY OF LAS VEGAS, CLARK COUNTY, NEVADA AS SHOWN ON THAT CERTAIN MAP ON FILE IN THE CLARK COUNTY RECORDER'S OFFICE IN FILE 160, PAGE 26 OF SURVEYS.

**APPROVED FOR CONSTRUCTION**

LAS VEGAS VALLEY WATER DISTRICT ENGINEERING SERVICES MANAGER  
 DATE: PROJECT No.: 124685

**APPROVALS**

LAS VEGAS FIRE AND RESCUE DATE



NO.	DESCRIPTION	DATE	APP'D

DATE: 05/AM/2016  
 PM: J. PEARCE  
 DRAWN BY:  
 DESIGNED BY:  
 CHECKED BY:  
 ADA CHECKED:  
 JOB NO.: 007899  
 SCALE: 1" = 40'

**Triton Engineering**  
 Office: (702) 254-1480  
 Fax: (702) 254-3982  
 6757 W. Charleston Blvd.  
 Suite B  
 Las Vegas, Nevada 89146  
 www.tritoneng.com



DR. HORTON  
 AZURE / TORREY PINES NORTH  
 TRAFFIC PLAN I  
**FAST**

PROFESSIONAL ENGINEER - CIVIL  
 JAMES M. PEARCE  
 Exp. 12-31-17  
 No. 9551

SHEET 13 OF 14  
 C.L.V. DWG.# 64695

WESTERN STATES CONTRACTING, INC.  
 4129 W. CHEYENNE AVE. SUITE B  
 N. LAS VEGAS, NV 89022  
 Proj# 124685 Agrmt# 115991 QS-125-26-NW XC-11221  
**ASBUILT**

Triton Drawings\007.099 Azure\Torrey Pines North\Drawings\IMPROVEMENT PLANS\13-Traffic plan.dwg sheet West 19 Nov 2015 12:23:38