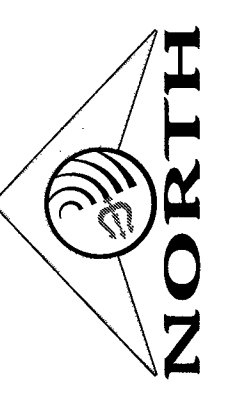
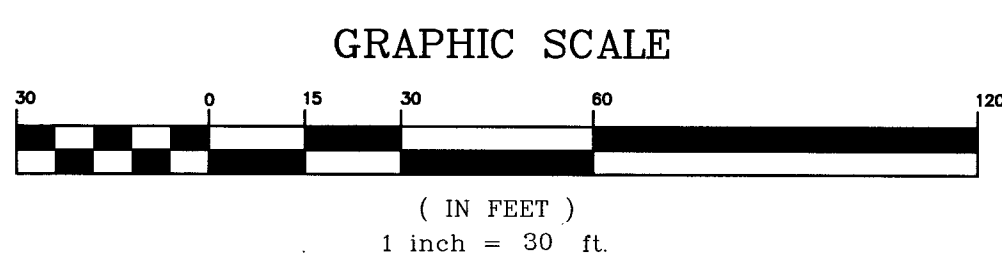


Call before you Dig
Avoid cutting underground utility lines. It's costly.

CALL **811**
OR
1-800-227-2600

Call before you Overhead
Avoid overhead power line contact. It's costly.
1-702-227-2929

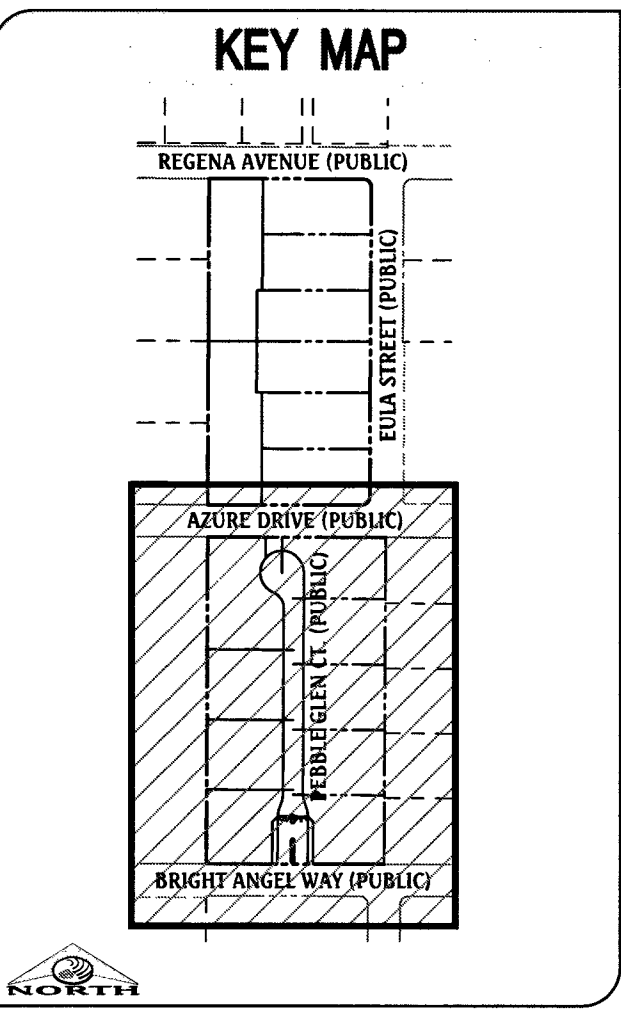
FAST
Call before you Underground
1-702-432-5300
FREIGHTWAY & ARTERIAL SYSTEM OF TRANSPORTATION



UTILITY LEGEND

EX. GAS	EXISTING GAS	PROPOSED STANDARD FIRE HYDRANT WITH 6" LATERAL, 6" GATE VALVE AND TEE
EX. 10" S	EXISTING SEWER MAIN	BACK WATER VALVE
8" S	PROPOSED SEWER MAIN	PRESSURE REDUCING VALVE
EX. 36" SD	EXISTING STORM DRAIN	EXISTING STREET LIGHT
36" SD	PROPOSED STORM DRAIN	FUTURE STREET LIGHT
EX. 8" W	EXISTING WATER MAIN	PROPOSED 100W HPS STREET LIGHT
8" W	PROPOSED WATER MAIN	PROPOSED 150W HPS STREET LIGHT
	PROPOSED WATER LATERAL WITH 3/4" METER	PROPOSED 200W HPS STREET LIGHT
	EXISTING UTILITY MANHOLE	PROPOSED 250W HPS STREET LIGHT
	PROPOSED UTILITY MANHOLE	PROPOSED 400W HPS STREET LIGHT
	EXISTING VALVE	PROPOSED CONCRETE DRIVEWAY
	PROPOSED VALVE	
	PROPOSED REDUCER	

- ### WATER & SEWER CONSTRUCTION NOTES
- POC - REMOVE EXISTING CAP & BLOW OFF ASSEMBLY PER UDACS PLATE NO. 36 AND INSTALL 6" 45° BEND PER UDACS PLATE NO. 31.
 - INSTALL 6" 45° BEND PER UDACS PLATE NO. 31.
 - INSTALL 6" 45° BEND PER UDACS PLATE NO. 31.
 - INSTALL 6" 45° BEND PER UDACS PLATE NO. 31.
 - INSTALL 2" BLOW OFF ASSEMBLY WITH CAP PER UDACS PLATE NO. 36.
 - INSTALL FIRE HYDRANT ASSEMBLY WITH 6" GATE VALVE AND 6" TEE PER UDACS PLATE NO. 40.
 - INSTALL 1" COPPER WATER SERVICE W/ 3/4" METER PER UDACS PLATE NO. 4.
 - INSTALL 3/4" IRRIGATION METER W/ 1" RPPA PER UDACS PLATE NO. 4 & 8 (BRASS BETWEEN METER & RPPA).
 - INSTALL 6" PVC WATER PIPE PER UDACS SECTION 2.08.02 AND UDACS PLATE NO. 17.
 - POC - REMOVE EXISTING CAP & BLOW OFF ASSEMBLY PER UDACS PLATE NO. 36 AND CONNECT & EXTEND 6" PVC WATER PIPE PER UDACS SECTION 2.08.02 AND UDACS PLATE NO. 17.
 - INSTALL 48" MANHOLE PER UDACS SD-1A, SD-1B, SD-4 WITH PRECAST BASE, WITH SINGLE COVER.
 - INSTALL 2 EA 4" IRRIGATION CONDUIT.
 - INSTALL 6" PVC SEWER LATERAL WITH WARKER BALL & CURB MARKING PER UDACS SD-22 AND SD-25.
 - INSTALL 6" PVC SEWER PIPE PER UDACS SD-22 AND SD-25.
 - EX. SEWER MANHOLE, PROTECT IN PLACE, ADJUST RIM PER UDACS SD-4 & SD-5 IF APPLICABLE.
 - INSTALL 6" PVC WATER PIPE PER UDACS SECTION 2.08.02 AND UDACS PLATE NO. 17.
 - EX. WATER GATE VALVE, PROTECT IN PLACE, ADJUST/REPLACE CONCRETE COLLAR PER UDACS PLATE NO. 39.
 - NOT USED.
 - INSTALL 6" PVC WATER PIPE PER UDACS SECTION 2.08.01 AND UDACS PLATE NO. 16.
 - INSTALL 6" PVC WATER PIPE PER UDACS SECTION 2.08.01 AND UDACS PLATE NO. 16.
 - INSTALL TYPE "C" TEST STATION, SEE DETAILS SHEET 15.
 - INSTALL 1" COPPER WATER SERVICE W/ 3/4" METER PER UDACS PLATE NO. 4, SEE ADDITIONAL DETAILS SHEET 15.
 - INSTALL DEEP FIRE HYDRANT ASSEMBLY WITH 6" GATE VALVE AND 8" 76" TEE PER UDACS PLATE NO. 41.
 - INSTALL (2 EA) 4" IRRIGATION CONDUIT.



UTILITY APPURTENANCES

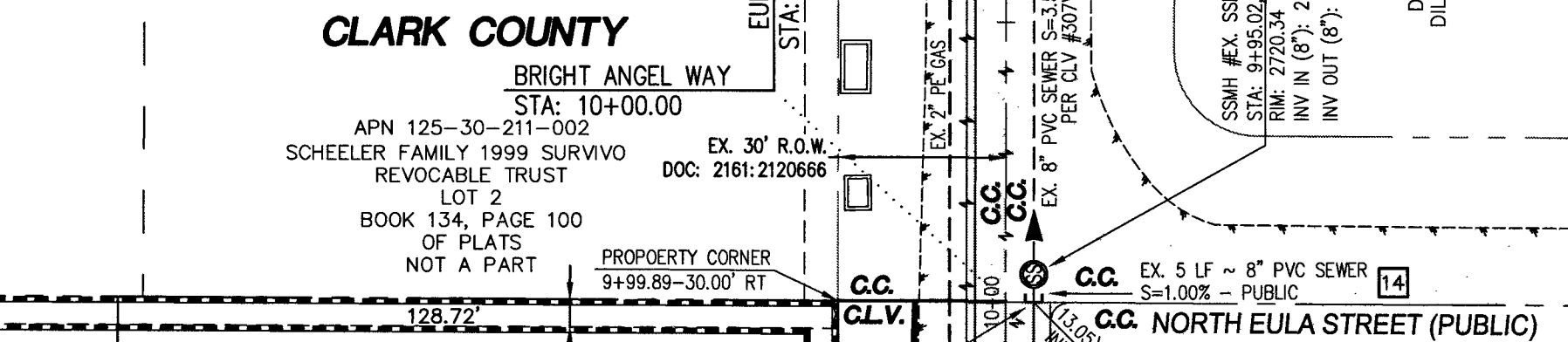
ALL ABOVE GROUND UTILITY APPURTENANCES SHALL CONFORM TO THE REQUIREMENTS OF TITLE 19.06 AND 19.08.

WATER MAIN JOINT DEFLECTION (PVC, 4"-24")

PVC PIPE SHALL BE DEFLECTED AT THE JOINT ONLY. THE MAXIMUM ALLOWABLE DEFLECTION SHALL BE ONE (1) DEGREE PER JOINT WITH A MAXIMUM RADIUS OF CURVATURE OF 1,150 FEET, PER UDACS 2.07.01 AND 2.07.02.

FOR ALL DRY AND UTILITY CROSSINGS
MAINTAIN MINIMUM 12" VERTICAL SEPARATION AT ALL POINTS OF CROSSING.
MAINTAIN A MINIMUM 3" PARALLEL SEPARATION.

ANY EXCAVATION AT BACK OF CURB MUST REMAIN OPEN FOR INSPECTION OF COPPER SERVICE LATERALS. ANY COPPER SERVICE LATERAL, KINKED, BENT OR OTHERWISE DAMAGED MUST BE REPLACED FROM THE MAIN TO THE ANGLE METER STOP.



SEE SHEET 14 FOR CONTINUATION

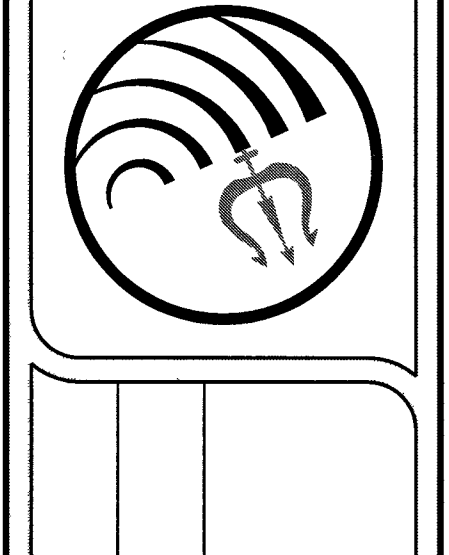
10:17:00m
10:Drawings\Improvements\007_070_13-Utilities.dwg
Tue, 18 Oct 2016

DATE: 10/18/16	NO. DESCRIPTION	DATE	APP'D
DESIGNED BY: J. PEARCE			
CHECKED BY: J. PEARCE			
JOB NO.: 007070			
SCALE: 1" = 30'			

Triton Engineering

6757 W. Charleston Blvd.
Suite B
Las Vegas, Nevada 89146

Office: (702) 254-1480
Fax: (702) 254-3662
www.tritoneng.com



DR HORTON
AZURE & EULA

UTILITY PLAN I

APPROVED FOR CONSTRUCTION

APPROVALS

DATE: 10/18/16

SHEET 13 OF 17
C.L.V. DWG# 63459

FOR WALLS, FENCE, AND PLANTER LOCATIONS, A PERIMETER AROUND THE HYDRANT MEASURING A MINIMUM OF 3 FEET FROM ITS CIRCUMFERENCE SHALL BE MAINTAINED CLEAR OF ALL OBSTRUCTIONS AT ALL TIMES.

10" WIDE PUBLIC DRAINAGE EASEMENT TO BE PRIVATELY MAINTAINED BY THE HOA.

16.5 LF ~ 6" RESTRAINED DIP WATER IN 16" CASING PER UDACS PLATE NO. 23 (SEE DETAIL C/15).

13+26.29
15.00' RT
13+36.29
15.00' RT

APN 125-30-101-023
SPIERS RAQUEL
LOT 4
FILE 79, PAGE 90
OF PARCEL MAPS
NOT A PART

REDUCED PRESSURE PRINCIPLE ASSEMBLY (1) T

APPROVED REDUCED PRESSURE PRINCIPLE ASSEMBLY(S) SHALL BE INSTALLED PER THE UDACS PLATE NO. 8. NO WATER SHALL BE TAKEN FROM A SERVICE REQUIRING BACKFLOW PREVENTION UNTIL THE REDUCED PRESSURE PRINCIPLE ASSEMBLY HAS BEEN SUCCESSFULLY TESTED BY THE LVWD.

ANY BLOCK WALL OR OTHER FENCE MATERIAL SHALL BE DESIGNED AND CONSTRUCTED AROUND THE OUTSIDE OF THE EASEMENT(S) TO ALLOW THE DISTRICT DIRECT ACCESS FROM THE ADJACENT RIGHT-OF-WAY. EASEMENT(S) SHALL BE CLEARLY MARKED OR STAKED PRIOR TO THE START OF CONSTRUCTION.

104.80'
12+25.29-30.00' RT
12+29.29-31.50' RT
12+41.29-31.50' RT

16.5 LF ~ 6" RESTRAINED DIP WATER IN 16" CASING PER UDACS PLATE NO. 23 (SEE DETAIL C/15).

13+26.29
15.00' RT
13+36.29
15.00' RT

APN 125-30-101-023
SPIERS RAQUEL
LOT 4
FILE 79, PAGE 90
OF PARCEL MAPS
NOT A PART

REDUCED PRESSURE PRINCIPLE ASSEMBLY (1) T

APPROVED REDUCED PRESSURE PRINCIPLE ASSEMBLY(S) SHALL BE INSTALLED PER THE UDACS PLATE NO. 8. NO WATER SHALL BE TAKEN FROM A SERVICE REQUIRING BACKFLOW PREVENTION UNTIL THE REDUCED PRESSURE PRINCIPLE ASSEMBLY HAS BEEN SUCCESSFULLY TESTED BY THE LVWD.

ANY BLOCK WALL OR OTHER FENCE MATERIAL SHALL BE DESIGNED AND CONSTRUCTED AROUND THE OUTSIDE OF THE EASEMENT(S) TO ALLOW THE DISTRICT DIRECT ACCESS FROM THE ADJACENT RIGHT-OF-WAY. EASEMENT(S) SHALL BE CLEARLY MARKED OR STAKED PRIOR TO THE START OF CONSTRUCTION.

APN 125-30-101-023
SPIERS RAQUEL
LOT 4
FILE 79, PAGE 90
OF PARCEL MAPS
NOT A PART

104.80'
12+25.29-30.00' RT
12+29.29-31.50' RT
12+41.29-31.50' RT

16.5 LF ~ 6" RESTRAINED DIP WATER IN 16" CASING PER UDACS PLATE NO. 23 (SEE DETAIL C/15).

13+26.29
15.00' RT
13+36.29
15.00' RT

APN 125-30-101-023
SPIERS RAQUEL
LOT 4
FILE 79, PAGE 90
OF PARCEL MAPS
NOT A PART

REDUCED PRESSURE PRINCIPLE ASSEMBLY (1) T

APPROVED REDUCED PRESSURE PRINCIPLE ASSEMBLY(S) SHALL BE INSTALLED PER THE UDACS PLATE NO. 8. NO WATER SHALL BE TAKEN FROM A SERVICE REQUIRING BACKFLOW PREVENTION UNTIL THE REDUCED PRESSURE PRINCIPLE ASSEMBLY HAS BEEN SUCCESSFULLY TESTED BY THE LVWD.

ANY BLOCK WALL OR OTHER FENCE MATERIAL SHALL BE DESIGNED AND CONSTRUCTED AROUND THE OUTSIDE OF THE EASEMENT(S) TO ALLOW THE DISTRICT DIRECT ACCESS FROM THE ADJACENT RIGHT-OF-WAY. EASEMENT(S) SHALL BE CLEARLY MARKED OR STAKED PRIOR TO THE START OF CONSTRUCTION.

APN 125-30-101-023
SPIERS RAQUEL
LOT 4
FILE 79, PAGE 90
OF PARCEL MAPS
NOT A PART

104.80'
12+25.29-30.00' RT
12+29.29-31.50' RT
12+41.29-31.50' RT

16.5 LF ~ 6" RESTRAINED DIP WATER IN 16" CASING PER UDACS PLATE NO. 23 (SEE DETAIL C/15).

13+26.29
15.00' RT
13+36.29
15.00' RT

APN 125-30-101-023
SPIERS RAQUEL
LOT 4
FILE 79, PAGE 90
OF PARCEL MAPS
NOT A PART

REDUCED PRESSURE PRINCIPLE ASSEMBLY (1) T

APPROVED REDUCED PRESSURE PRINCIPLE ASSEMBLY(S) SHALL BE INSTALLED PER THE UDACS PLATE NO. 8. NO WATER SHALL BE TAKEN FROM A SERVICE REQUIRING BACKFLOW PREVENTION UNTIL THE REDUCED PRESSURE PRINCIPLE ASSEMBLY HAS BEEN SUCCESSFULLY TESTED BY THE LVWD.

ANY BLOCK WALL OR OTHER FENCE MATERIAL SHALL BE DESIGNED AND CONSTRUCTED AROUND THE OUTSIDE OF THE EASEMENT(S) TO ALLOW THE DISTRICT DIRECT ACCESS FROM THE ADJACENT RIGHT-OF-WAY. EASEMENT(S) SHALL BE CLEARLY MARKED OR STAKED PRIOR TO THE START OF CONSTRUCTION.

APN 125-30-101-023
SPIERS RAQUEL
LOT 4
FILE 79, PAGE 90
OF PARCEL MAPS
NOT A PART

104.80'
12+25.29-30.00' RT
12+29.29-31.50' RT
12+41.29-31.50' RT

16.5 LF ~ 6" RESTRAINED DIP WATER IN 16" CASING PER UDACS PLATE NO. 23 (SEE DETAIL C/15).

13+26.29
15.00' RT
13+36.29
15.00' RT

APN 125-30-101-023
SPIERS RAQUEL
LOT 4
FILE 79, PAGE 90
OF PARCEL MAPS
NOT A PART

REDUCED PRESSURE PRINCIPLE ASSEMBLY (1) T

APPROVED REDUCED PRESSURE PRINCIPLE ASSEMBLY(S) SHALL BE INSTALLED PER THE UDACS PLATE NO. 8. NO WATER SHALL BE TAKEN FROM A SERVICE REQUIRING BACKFLOW PREVENTION UNTIL THE REDUCED PRESSURE PRINCIPLE ASSEMBLY HAS BEEN SUCCESSFULLY TESTED BY THE LVWD.

ANY BLOCK WALL OR OTHER FENCE MATERIAL SHALL BE DESIGNED AND CONSTRUCTED AROUND THE OUTSIDE OF THE EASEMENT(S) TO ALLOW THE DISTRICT DIRECT ACCESS FROM THE ADJACENT RIGHT-OF-WAY. EASEMENT(S) SHALL BE CLEARLY MARKED OR STAKED PRIOR TO THE START OF CONSTRUCTION.

APN 125-30-101-023
SPIERS RAQUEL
LOT 4
FILE 79, PAGE 90
OF PARCEL MAPS
NOT A PART

104.80'
12+25.29-30.00' RT
12+29.29-31.50' RT
12+41.29-31.50' RT

16.5 LF ~ 6" RESTRAINED DIP WATER IN 16" CASING PER UDACS PLATE NO. 23 (SEE DETAIL C/15).

13+26.29
15.00' RT
13+36.29
15.00' RT

APN 125-30-101-023
SPIERS RAQUEL
LOT 4
FILE 79, PAGE 90
OF PARCEL MAPS
NOT A PART

REDUCED PRESSURE PRINCIPLE ASSEMBLY (1) T

APPROVED REDUCED PRESSURE PRINCIPLE ASSEMBLY(S) SHALL BE INSTALLED PER THE UDACS PLATE NO. 8. NO WATER SHALL BE TAKEN FROM A SERVICE REQUIRING BACKFLOW PREVENTION UNTIL THE REDUCED PRESSURE PRINCIPLE ASSEMBLY HAS BEEN SUCCESSFULLY TESTED BY THE LVWD.

ANY BLOCK WALL OR OTHER FENCE MATERIAL SHALL BE DESIGNED AND CONSTRUCTED AROUND THE OUTSIDE OF THE EASEMENT(S) TO ALLOW THE DISTRICT DIRECT ACCESS FROM THE ADJACENT RIGHT-OF-WAY. EASEMENT(S) SHALL BE CLEARLY MARKED OR STAKED PRIOR TO THE START OF CONSTRUCTION.

APN 125-30-101-023
SPIERS RAQUEL
LOT 4
FILE 79, PAGE 90
OF PARCEL MAPS
NOT A PART

104.80'
12+25.29-30.00' RT
12+29.29-31.50' RT
12+41.29-31.50' RT

16.5 LF ~ 6" RESTRAINED DIP WATER IN 16" CASING PER UDACS PLATE NO. 23 (SEE DETAIL C/15).

13+26.29
15.00' RT
13+36.29
15.00' RT

APN 125-30-101-023
SPIERS RAQUEL
LOT 4
FILE 79, PAGE 90
OF PARCEL MAPS
NOT A PART

REDUCED PRESSURE PRINCIPLE ASSEMBLY (1) T

APPROVED REDUCED PRESSURE PRINCIPLE ASSEMBLY(S) SHALL BE INSTALLED PER THE UDACS PLATE NO. 8. NO WATER SHALL BE TAKEN FROM A SERVICE REQUIRING BACKFLOW PREVENTION UNTIL THE REDUCED PRESSURE PRINCIPLE ASSEMBLY HAS BEEN SUCCESSFULLY TESTED BY THE LVWD.

ANY BLOCK WALL OR OTHER FENCE MATERIAL SHALL BE DESIGNED AND CONSTRUCTED AROUND THE OUTSIDE OF THE EASEMENT(S) TO ALLOW THE DISTRICT DIRECT ACCESS FROM THE ADJACENT RIGHT-OF-WAY. EASEMENT(S) SHALL BE CLEARLY MARKED OR STAKED PRIOR TO THE START OF CONSTRUCTION.

APN 125-30-101-023
SPIERS RAQUEL
LOT 4
FILE 79, PAGE 90
OF PARCEL MAPS
NOT A PART

104.80'
12+25.29-30.00' RT
12+29.29-31.50' RT
12+41.29-31.50' RT

16.5 LF ~ 6" RESTRAINED DIP WATER IN 16" CASING PER UDACS PLATE NO. 23 (SEE DETAIL C/15).

13+26.29
15.00' RT
13+36.29
15.00' RT

APN 125-30-101-023
SPIERS RAQUEL
LOT 4
FILE 79, PAGE 90
OF PARCEL MAPS
NOT A PART

REDUCED PRESSURE PRINCIPLE ASSEMBLY (1) T

APPROVED REDUCED PRESSURE PRINCIPLE ASSEMBLY(S) SHALL BE INSTALLED PER THE UDACS PLATE NO. 8. NO WATER SHALL BE TAKEN FROM A SERVICE REQUIRING BACKFLOW PREVENTION UNTIL THE REDUCED PRESSURE PRINCIPLE ASSEMBLY HAS BEEN SUCCESSFULLY TESTED BY THE LVWD.

ANY BLOCK WALL OR OTHER FENCE MATERIAL SHALL BE DESIGNED AND CONSTRUCTED AROUND THE OUTSIDE OF THE EASEMENT(S) TO ALLOW THE DISTRICT DIRECT ACCESS FROM THE ADJACENT RIGHT-OF-WAY. EASEMENT(S) SHALL BE CLEARLY MARKED OR STAKED PRIOR TO THE START OF CONSTRUCTION.

APN 125-30-101-023
SPIERS RAQUEL
LOT 4
FILE 79, PAGE 90
OF PARCEL MAPS
NOT A PART

104.80'
12+25.29-30.00' RT
12+29.29-31.50' RT
12+41.29-31.50' RT

16.5 LF ~ 6" RESTRAINED DIP WATER IN 16" CASING PER UDACS PLATE NO. 23 (SEE DETAIL C/15).

13+26.29
15.00' RT
13+36.29
15.00' RT

APN 125-30-101-023
SPIERS RAQUEL
LOT 4
FILE 79, PAGE 90
OF PARCEL MAPS
NOT A PART

REDUCED PRESSURE PRINCIPLE ASSEMBLY (1) T

APPROVED REDUCED PRESSURE PRINCIPLE ASSEMBLY(S) SHALL BE INSTALLED PER THE UDACS PLATE NO. 8. NO WATER SHALL BE TAKEN FROM A SERVICE REQUIRING BACKFLOW PREVENTION UNTIL THE REDUCED PRESSURE PRINCIPLE ASSEMBLY HAS BEEN SUCCESSFULLY TESTED BY THE LVWD.

ANY BLOCK WALL OR OTHER FENCE MATERIAL SHALL BE DESIGNED AND CONSTRUCTED AROUND THE OUTSIDE OF THE EASEMENT(S) TO ALLOW THE DISTRICT DIRECT ACCESS FROM THE ADJACENT RIGHT-OF-WAY. EASEMENT(S) SHALL BE CLEARLY MARKED OR STAKED PRIOR TO THE START OF CONSTRUCTION.

APN 125-30-101-023
SPIERS RAQUEL
LOT 4
FILE 79, PAGE 90
OF PARCEL MAPS
NOT A PART

104.80'
12+25.29-30.00' RT
12+29.29-31.50' RT
12+41.29-31.50' RT

16.5 LF ~ 6" RESTRAINED DIP WATER IN 16" CASING PER UDACS PLATE NO. 23 (SEE DETAIL C/15).

13+26.29
15.00' RT
13+36.29
15.00' RT

APN 125-30-101-023
SPIERS RAQUEL
LOT 4
FILE 79, PAGE 90
OF PARCEL MAPS
NOT A PART

REDUCED PRESSURE PRINCIPLE ASSEMBLY (1) T

APPROVED REDUCED PRESSURE PRINCIPLE ASSEMBLY(S) SHALL BE INSTALLED PER THE UDACS PLATE NO. 8. NO WATER SHALL BE TAKEN FROM A SERVICE REQUIRING BACKFLOW PREVENTION UNTIL THE REDUCED PRESSURE PRINCIPLE ASSEMBLY HAS BEEN SUCCESSFULLY TESTED BY THE LVWD.

ANY BLOCK WALL OR OTHER FENCE MATERIAL SHALL BE DESIGNED AND CONSTRUCTED AROUND THE OUTSIDE OF THE EASEMENT(S) TO ALLOW THE DISTRICT DIRECT ACCESS FROM THE ADJACENT RIGHT-OF-WAY. EASEMENT(S) SHALL BE CLEARLY MARKED OR STAKED PRIOR TO THE START OF CONSTRUCTION.

APN 125-30-101-023
SPIERS RAQUEL
LOT 4
FILE 79, PAGE 90
OF PARCEL MAPS
NOT A PART

104.80'
12+25.29-30.00' RT
12+29.29-31.50' RT
12+41.29-31.50' RT

16.5 LF ~ 6" RESTRAINED DIP WATER IN 16" CASING PER UDACS PLATE NO. 23 (SEE DETAIL C/15).

13+26.29
15.00' RT
13+36.29
15.00' RT

APN 125-30-101-023
SPIERS RAQUEL
LOT 4
FILE 79, PAGE 90
OF PARCEL MAPS
NOT A PART

REDUCED PRESSURE PRINCIPLE ASSEMBLY (1) T

APPROVED REDUCED PRESSURE PRINCIPLE ASSEMBLY(S) SHALL BE INSTALLED PER THE UDACS PLATE NO. 8. NO WATER SHALL BE TAKEN FROM A SERVICE REQUIRING BACKFLOW PREVENTION UNTIL THE REDUCED PRESSURE PRINCIPLE ASSEMBLY HAS BEEN SUCCESSFULLY TESTED BY THE LVWD.

ANY BLOCK WALL OR OTHER FENCE MATERIAL SHALL BE DESIGNED AND CONSTRUCTED AROUND THE OUTSIDE OF THE EASEMENT(S) TO ALLOW THE DISTRICT DIRECT ACCESS FROM THE ADJACENT RIGHT-OF-WAY. EASEMENT(S) SHALL BE CLEARLY MARKED OR STAKED PRIOR TO THE START OF CONSTRUCTION.

APN 125-30-101-023
SPIERS RAQUEL
LOT 4
FILE 79, PAGE 90
OF PARCEL MAPS
NOT A PART

104.80'
12+25.29-30.00' RT
12+29.29-31.50' RT
12+41.29-31.50' RT

16.5 LF ~ 6" RESTRAINED DIP WATER IN 16" CASING PER UDACS PLATE NO. 23 (SEE DETAIL C/15).

13+26.29
15.00' RT
13+36.29
15.00' RT

APN 125-30-101-023
SPIERS RAQUEL
LOT 4
FILE 79, PAGE 90
OF PARCEL MAPS
NOT A PART

REDUCED PRESSURE PRINCIPLE ASSEMBLY (1) T

APPROVED REDUCED PRESSURE PRINCIPLE ASSEMBLY(S) SHALL BE INSTALLED PER THE UDACS PLATE NO. 8. NO WATER SHALL BE TAKEN FROM A SERVICE REQUIRING BACKFLOW PREVENTION UNTIL THE REDUCED PRESSURE PRINCIPLE ASSEMBLY HAS BEEN SUCCESSFULLY TESTED BY THE LVWD.

ANY BLOCK WALL OR OTHER FENCE MATERIAL SHALL BE DESIGNED AND CONSTRUCTED AROUND THE OUTSIDE OF THE EASEMENT(S) TO ALLOW THE DISTRICT DIRECT ACCESS FROM THE ADJACENT RIGHT-OF-WAY. EASEMENT(S) SHALL BE CLEARLY MARKED OR STAKED PRIOR TO THE START OF CONSTRUCTION.

APN 125-30-101-023
SPIERS RAQUEL
LOT 4
FILE 79, PAGE 90
OF PARCEL MAPS
NOT A PART

104.80'
12+25.29-30.00' RT
12+29.29-31.50' RT
12+41.29-31.50' RT

16.5 LF ~ 6" RESTRAINED DIP WATER IN 16" CASING PER UDACS PLATE NO. 23 (SEE DETAIL C/15).

13+26.29
15.00' RT
13+36.29
15.00' RT

APN 125-30-101-023
SPIERS RAQUEL
LOT 4
FILE 79, PAGE 90
OF PARCEL MAPS
NOT A PART

REDUCED PRESSURE PRINCIPLE ASSEMBLY (1) T

APPROVED REDUCED PRESSURE PRINCIPLE ASSEMBLY(S) SHALL BE INSTALLED PER THE UDACS PLATE NO. 8. NO WATER SHALL BE TAKEN FROM A SERVICE REQUIRING BACKFLOW PREVENTION UNTIL THE REDUCED PRESSURE PRINCIPLE ASSEMBLY HAS BEEN SUCCESSFULLY TESTED BY THE LVWD.

ANY BLOCK WALL OR OTHER FENCE MATERIAL SHALL BE DESIGNED AND CONSTRUCTED AROUND THE OUTSIDE OF THE EASEMENT(S) TO ALLOW THE DISTRICT DIRECT ACCESS FROM THE ADJACENT RIGHT-OF-WAY. EASEMENT(S) SHALL BE CLEARLY MARKED OR STAKED PRIOR TO THE START OF CONSTRUCTION.

APN 125-30-101-023
SPIERS RAQUEL
LOT 4
FILE 79, PAGE 90
OF PARCEL MAPS
NOT A PART

104.80'
12+25.29-30.00' RT
12+29.29-31.50' RT
12+41.29-31.50' RT

16.5 LF ~ 6" RESTRAINED DIP WATER IN 16" CASING PER UDACS PLATE NO. 23 (SEE DETAIL C/15).

13+26.29
15.00' RT
13+36.29
15.00' RT

APN 125-30-101-023
SPIERS RAQUEL
LOT 4
FILE 79, PAGE 90
OF PARCEL MAPS
NOT A PART

REDUCED PRESSURE PRINCIPLE ASSEMBLY (1) T

APPROVED REDUCED PRESSURE PRINCIPLE ASSEMBLY(S) SHALL BE INSTALLED PER THE UDACS PLATE NO. 8. NO WATER SHALL BE TAKEN FROM A SERVICE REQUIRING BACKFLOW PREVENTION UNTIL THE REDUCED PRESSURE PRINCIPLE ASSEMBLY HAS BEEN SUCCESSFULLY TESTED BY THE LVWD.

ANY BLOCK WALL OR OTHER FENCE MATERIAL SHALL BE DESIGNED AND CONSTRUCTED AROUND THE OUTSIDE OF THE EASEMENT(S) TO ALLOW THE DISTRICT DIRECT ACCESS FROM THE ADJACENT RIGHT-OF-WAY. EASEMENT(S) SHALL BE CLEARLY MARKED OR STAKED PRIOR TO THE START OF CONSTRUCTION.

APN 125-30-101-023
SPIERS RAQUEL
LOT 4
FILE 79, PAGE 90
OF PARCEL MAPS
NOT A PART

104.80'
12+25.29-30.00' RT
12+29.29-31.50' RT
12+41.29-31.50' RT

16.5 LF ~ 6" RESTRAINED DIP WATER IN 16" CASING PER UDACS PLATE NO. 23 (SEE DETAIL C/15).

13+26.29
15.00' RT
13+36.29
15.00' RT

APN 125-30-101-023
SPIERS RAQUEL
LOT 4
FILE 79, PAGE 90
OF PARCEL MAPS
NOT A PART

REDUCED PRESSURE PRINCIPLE ASSEMBLY (1) T

APPROVED REDUCED PRESSURE PRINCIPLE ASSEMBLY(S) SHALL BE INSTALLED PER THE UDACS PLATE NO. 8. NO WATER SHALL BE TAKEN FROM A SERVICE REQUIRING BACKFLOW PREVENTION UNTIL THE REDUCED PRESSURE PRINCIPLE ASSEMBLY HAS BEEN SUCCESSFULLY TESTED BY THE LVWD.

ANY BLOCK WALL OR OTHER FENCE MATERIAL SHALL BE DESIGNED AND CONSTRUCTED AROUND THE OUTSIDE OF THE EASEMENT(S) TO ALLOW THE DISTRICT DIRECT ACCESS FROM THE ADJACENT RIGHT-OF-WAY. EASEMENT(S) SHALL BE CLEARLY MARKED OR STAKED PRIOR TO THE START OF CONSTRUCTION.

AP