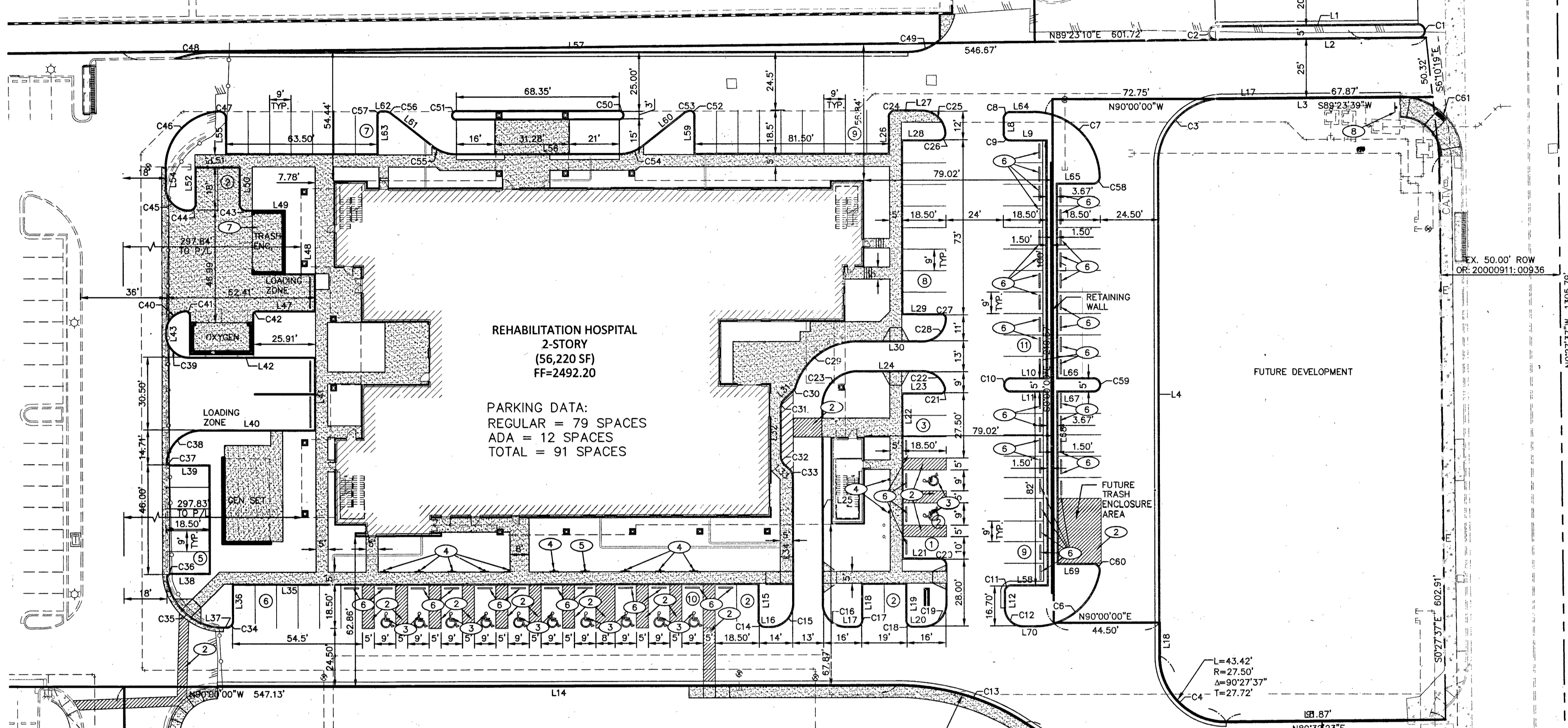
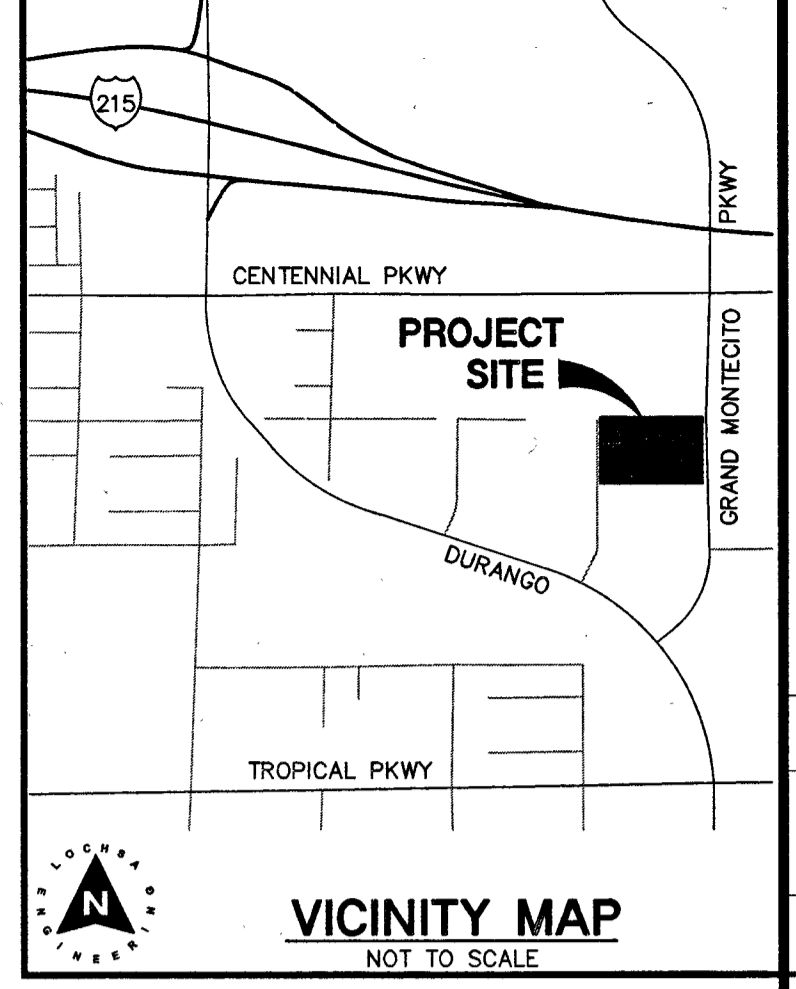
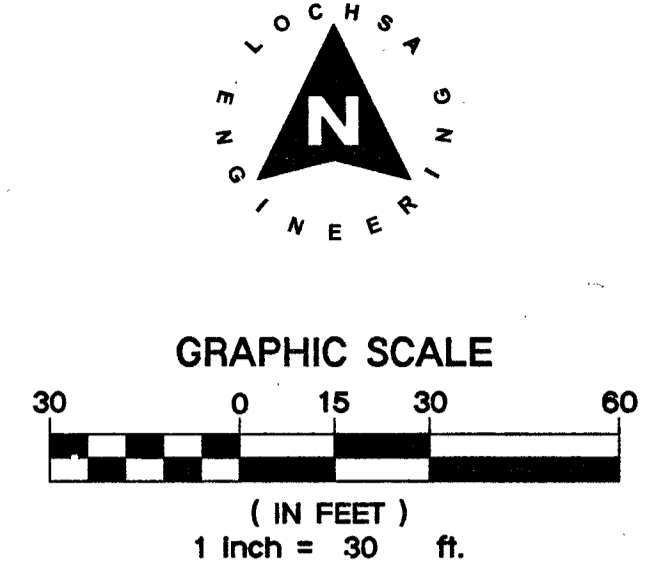


LINE TABLE			LINE TABLE			LINE TABLE			LINE TABLE			LINE TABLE			LINE TABLE			LINE TABLE					
LINE #	LENGTH	DIRECTION	LINE #	LENGTH	DIRECTION	LINE #	LENGTH	DIRECTION	LINE #	LENGTH	DIRECTION	LINE #	LENGTH	DIRECTION	LINE #	LENGTH	DIRECTION	LINE #	LENGTH	DIRECTION			
L1	85.00'	S89°22'39"W	L12	6.70'	S00°00'00"W	L21	15.63'	N90°00'00"E	L30	20.12'	N00°01'39"E	L39	16.36'	N90°00'00"E	L48	41.50'	N00°00'00"E	L57	291.79'	N90°00'00"E	L66	15.50'	N90°00'00"E
L2	85.00'	N89°22'39"E	L13	26.83'	N57°28'57"W	L22	70.00'	S00°00'00"E	L31	20.12'	N00°01'39"E	L40	48.43'	N90°00'00"E	L49	28.39'	S90°00'00"W	L58	15.50'	N90°00'00"E	L67	15.00'	N90°00'00"E
L3	74.32'	S89°20'35"W	L14	284.87'	N90°00'00"W	L23	16.31'	N90°00'00"E	L32	20.12'	N00°01'39"E	L41	30.00'	N00°00'23"E	L50	15.50'	S00°00'00"E	L59	16.50'	N00°00'00"E	L68	73.00'	S00°00'00"E
L4	206.06'	S00°00'00"E	L15	15.50'	S00°00'00"E	L24	27.19'	N90°00'00"E	L33	2.93'	N45°00'00"W	L42	52.93'	S90°00'00"E	L41	30.00'	N00°00'23"E	L60	21.72'	S51°39'11"W	L69	15.13'	N90°00'00"E
L5	76.27'	N89°30'42"E	L16	2.00'	N90°00'00"E	L25	82.77'	S00°00'00"E	L34	52.92'	N00°00'00"W	L43	0.99'	S00°00'00"E	L42	52.93'	S90°00'00"E	L61	21.72'	S51°40'00"E	L70	4.67'	N90°00'00"E
L6	93.61'	S89°32'23"W	L17	4.01'	N90°00'00"E	L26	15.52'	N00°00'00"W	L35	220.99'	N90°00'00"W	L44	24.40'	N90°00'00"E	L43	0.99'	S00°00'00"E	L62	1.26'	N80°00'00"E			
L7	82.00'	S00°00'00"E	L18	15.50'	S00°00'00"E	L27	11.04'	S89°59'08"W	L36	15.50'	S00°00'00"E	L45	15.50'	S00°00'00"E	L44	24.40'	N90°00'00"E	L63	16.50'	N00°00'00"E			
L8	6.38'	S00°00'00"E	L19	15.50'	S00°00'00"E	L28	15.54'	N90°00'00"E	L37	1.26'	N90°00'00"E	L46	15.50'	S00°00'00"E	L45	15.50'	S00°00'00"E	L64	9.52'	N89°38'03"E			
L9	15.50'	N90°00'00"E	L20	4.17'	N90°00'00"E	L29	16.80'	N90°00'00"E	L38	16.30'	N90°00'00"E	L47	24.40'	N90°00'00"E	L46	15.50'	S00°00'00"E	L65	15.49'	N90°00'00"E			
L10	15.50'	N90°00'00"E				L30	27.25'	N90°00'00"E	L39	16.36'	N90°00'00"E	L48	41.50'	N00°00'00"E	L47	24.40'	N90°00'00"E	L66	15.50'	N90°00'00"E			
L11	15.50'	N90°00'00"E				L31	4.80'	N46°23'23"E	L40	48.43'	N90°00'00"E	L49	28.39'	S90°00'00"W	L48	41.50'	N00°00'00"E	L67	15.00'	N90°00'00"E			
									L41	30.00'	N00°00'23"E	L50	15.50'	S00°00'00"E	L49	28.39'	S90°00'00"W	L68	73.00'	S00°00'00"E			
									L42	52.93'	S90°00'00"E	L51	19.00'	N90°00'00"E	L50	15.50'	S00°00'00"E	L69	15.13'	N90°00'00"E			
									L43	0.99'	S00°00'00"E	L52	15.50'	N00°00'00"E	L51	19.00'	N90°00'00"E	L70	4.67'	N90°00'00"E			
									L44	24.40'	N90°00'00"E	L53	16.50'	N00°00'00"E	L52	15.50'	N00°00'00"E						
									L45	15.50'	S00°00'00"E	L54	8.04'	N00°00'00"E	L53	16.50'	N00°00'00"E						
									L46	15.50'	S00°00'00"E	L55	15.42'	N00°00'00"E	L54	8.04'	N00°00'00"E						
									L47	24.40'	N90°00'00"E												
									L48	41.50'	N00°00'00"E												
									L49	28.39'	S90°00'00"W												
									L50	15.50'	S00°00'00"E												
									L51	19.00'	N90°00'00"E												
									L52	15.50'	N00°00'00"E												
									L53	16.50'	N00°00'00"E												
									L54	8.04'	N00°00'00"E												
									L55	15.42'	N00°00'00"E												

- STRIPING NOTES:**
- INSTALL 9" X 18" PARKING WITH 4" WHITE PAINTED LINES. (TYPICAL)
 - INSTALL 4" WHITE PAINTED HATCH LINES 3' O.C. @ 45°.
 - INSTALL BLUE AND WHITE PAINTED HANDICAP PAVEMENT MARKINGS.
 - INSTALL R7-B "MINIMUM \$250 FINE FOR USE BY OTHERS" NRS 484.408 SIGN (12" X 18").
 - INSTALL R7-B "MINIMUM \$250 FINE FOR USE BY OTHERS" NRS 484.408 SIGN "VAN ACCESSIBLE" (12" X 18"). PER PER DETAIL 5 ON C5.01.
 - INSTALL PRECAST BUMPER BLOCKS 2' FROM CURB FACE PER DETAIL 5 ON C5.01.
 - TRASH ENCLOSURE PER ARCHITECTURAL PLANS
 - INSTALL 24" R-1 STOP SIGN



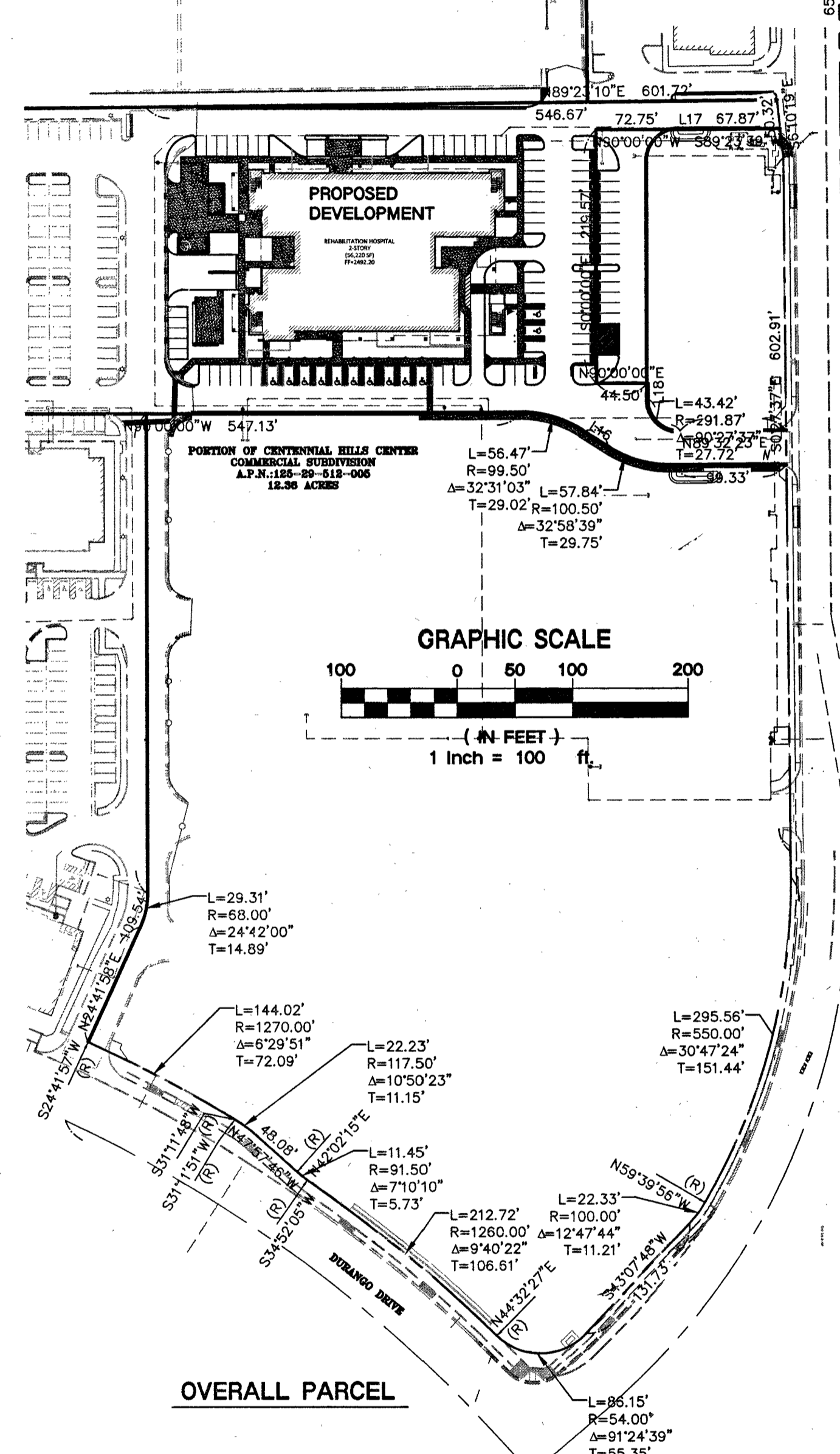
PORTION OF CENTENNIAL HILLS CENTER
COMMERCIAL SUBDIVISION
A.P.N.: 125-29-512-005
12.38 ACRES

NOTE:
ALL DIMENSIONS ARE TO BACK OF CURB UNLESS OTHERWISE NOTED.

CURVE TABLE			
CURVE #	LENGTH	RADIUS	DELTA
C1	7.85'	2.50'	180°00'24"
C2	7.85'	2.50'	180°00'00"
C3	42.90'	27.50'	089°22'55"
C4	43.42'	27.50'	090°27'37"
C5	57.84'	100.50'	032°58'39"
C6	38.45'	27.50'	080°06'11"
C7	42.78'	27.50'	089°07'32"
C8	3.90'	2.50'	089°22'55"
C9	3.93'	2.50'	090°00'00"
C10	3.93'	2.50'	090°00'00"
C11	3.93'	2.50'	090°00'00"
C12	11.78'	7.50'	090°00'00"
C13	56.47'	99.50'	032°31'03"
C14	3.93'	2.50'	090°00'00"
C15	14.92'	9.50'	090°00'00"
C16	14.92'	9.50'	090°00'00"
C17	3.93'	2.50'	090°00'00"
C18	3.93'	2.50'	090°00'00"
C19	14.92'	9.50'	090°00'00"
C20	3.93'	2.50'	090°00'00"

CURVE TABLE			
CURVE #	LENGTH	RADIUS	DELTA
C23	22.78'	14.50'	090°00'00"
C24	3.93'	2.50'	089°59'06"
C25	14.92'	9.50'	089°58'53"
C26	3.93'	2.50'	090°02'01"
C27	2.37'	1.50'	090°28'07"
C28	14.84'	9.50'	089°31'53"
C29	34.49'	27.50'	071°51'48"
C30	2.22'	4.50'	028°15'10"
C31	4.45'	5.50'	046°23'23"
C32	4.32'	5.50'	045°00'00"
C33	3.53'	4.50'	045°00'00"
C34	3.93'	2.50'	090°00'00"
C35	33.74'	23.50'	082°15'01"
C36	2.56'	1.50'	097°44'59"
C37	2.44'	1.51'	092°44'-1"
C38	19.64'	14.61'	077°03'45"
C39	14.92'	9.50'	090°00'00"
C40	12.70'	8.50'	085°34'44"
C41	2.44'	1.50'	092°59'19"
C42	2.35'	1.50'	089°35'45"

CURVE TABLE			
CURVE #	LENGTH	RADIUS	DELTA
C45	14.92'	9.50'	090°00'00"
C46	35.64'	23.50'	086°53'15"
C47	4.06'	2.50'	093°06'45"
C48	16.43'	44.50'	021°09'31"
C49	14.22'	19.50'	041°48'55"
C50	4.71'	1.50'	180°00'00"
C51	4.71'	1.50'	180°00'00"
C52	2.48'	1.50'	094°42'11"
C53	2.64'	4.50'	033°38'38"
C54	11.04'	16.50'	039°20'49"
C55	11.04'	16.50'	038°20'00"
C56	3.01'	4.50'	038°20'00"
C57	2.36'	1.50'	090°00'00"
C58	3.98'	2.50'	091°16'24"
C59	7.85'	2.50'	180°00'00"
C60	4.36'	2.50'	099°53'49"
C61	39.00'	25.15'	088°50'39"



NOTE:
LOCHSA ENGINEERING ASSUMES NO RESPONSIBILITY FOR EXISTING UTILITY LOCATIONS AND ELEVATIONS. THE UTILITIES SHOWN ON THIS PLAN ARE FROM THE BEST AVAILABLE INFORMATION. IT IS THE CONTRACTOR'S RESPONSIBILITY TO FIELD VERIFY THE LOCATION AND ELEVATION OF ALL UTILITIES INCLUDING BUT NOT LIMITED TO, THE WATER, FIRE, SANITARY SEWER, STORM SEWER, TELEPHONE, POWER, GAS, AND IRRIGATION LINES PRIOR TO THE COMMENCEMENT OF CONSTRUCTION. IF CONFLICT EXISTS IN THE FIELD, THE CONTRACTOR IS TO NOTIFY THE PROJECT ARCHITECT, OWNER'S REPRESENTATIVE AND THE PROJECT ENGINEER IMMEDIATELY.

BENCHMARK:
CITY OF LAS VEGAS MONUMENT ID: 14LV9029NE6 RIVET & PLATE IN TOP OF CURB 150' NW OF 1/16 CORNER, WEST SIDE OF GRAND MONTECITO PKWY. BETWEEN NORTH DURANGO AND WEST CENTENNIAL PKWY.

NAVD 88 = 2478.92 FEET
= 755.546 METERS

SAFETY ALERT
Call before you dig
Avoid cutting underground utility lines. It's costly.

Call Before You Overhead
Call before you dig
Underground

A.P.N.:
125-29-512-005

BASIS OF BEARINGS:
THE EAST LINE OF THE NORTHEAST QUARTER (NE 1/4) OF THE NORTHEAST QUARTER (NE 1/4) SECTION 29, TOWNSHIP 19 SOUTH, RANGE 60 EAST, M.D.M., CITY OF LAS VEGAS, CLARK COUNTY, NEVADA, AS SHOWN ON THAT MAP ON FILE IN BOOK 139 OF PLATS, PAGE 48, CLARK COUNTY RECORDER'S OFFICE. SAID LINE BEARS: NORTH 00° 27' 37" WEST.

Lochsa Engineering
6345 S. Jones Blvd
Suite 100
Las Vegas, NV 89118
Phone (702) 885-1777
www.lochsa.com

HORIZONTAL CONTROL SHEET 1
CENTENNIAL HILLS REHABILITATION HOSPITAL
LAS VEGAS, NV

PROJECT No.: 151113
DATE: 03/11/16
SCALE: 1" = 30'
DRAWN BY: MH
DESIGNED BY: CP/MH
CHECKED BY: TC

GUY M. MORRIS
CIVIL ENGINEER
No. 14526
Exp. 12-31-17

SHEET No. 5 of 6
CLV No. 107V6685 TH 63059

15-03-16
C:\Users\1153\OneDrive\Projects\151113\151113-16-03.dwg