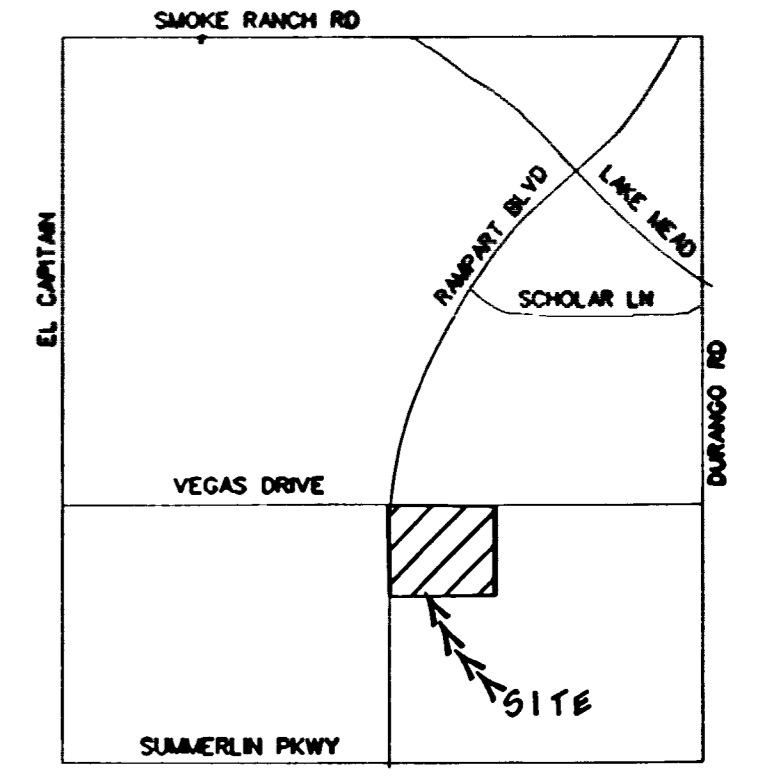


T 20 R 60
S 20,29
CLARK COUNTY



VICINITY MAP

DETAIL 'D'
SCALE: 1" = 5'-0"

SWITCH PAD

- CONSTRUCTION NOTES
- CUSTOMER TO PROVIDE AND INSTALL STAKING (PROPERTY CORNERS, ELEVATIONS AND GRADES)
 - BARRIERS PER NPCO U.G. STD. RS 6. IF EQUIPMENT IS LESS THAN 8' BACK OF CURB OR 6' FROM TRAFFIC AREA
 - THERE SHALL BE NO COVERED PARKING IN FRONT OF NPCO TRANSFORMERS OR OVER NPCO FACILITIES. NPCO REQUIRES A MINIMUM OF 10' WIDE CLEARANCE ACCESS IN FRONT OF ALL TRANSFORMERS PER NPCO U.G. STD. RS-5.
 - ALL HANDHOLES IN NON-CONCRETE AREAS SHALL HAVE AN 8" x 6" POURED CONCRETE COLLAR AROUND HANDHOLE PER NPCO U.G. STD. RS 1.
 - TRANSFORMER PADS, PULLBOXES, HANDHOLES AND MANHOLES PER NPCO U.G. STD.
 - TRENCHING (WITH SELECT BACKFILL) PER NPCO U.G. STD.
 - ALL HOLES IN TRENCHES SHALL BE A MINIMUM OF 3' FOOT ABOVE:
 - PRIMARY POLE RISER
 - PRIMARY CABLE
 - TRANSFORMERS AND CONNECTIONS TO THIS EQUIPMENT
 - SECONDARY SERVICES TO MANS WITH TWO OR MORE METERS.

NOTES

- INSTALL A 4" 45 DEGREE ROS BEND W/36" MIN RADIUS BY CUSTOMER
- INSTALL A 4" 90 DEGREE PLASTIC BEND W/36" MIN RADIUS BY CUSTOMER
- INSTALL A 5' X 10' 6" X 7' MANHOLE FOR SWITCH PER N.P.C. U.G. STD. RS 100, BY NPC CONTRACTOR
-
- INSTALL A 2'-6" X 6'-0" X 4'-0" PULLBOX PER NPC U.G. STD. RS 80 BY CUSTOMER
- INSTALL A 3' X 6' X 4' PULLBOX PER NPC U.G. STD. RS 81, BY CUSTOMER
- INSTALL A 5' X 10' 6" X 7' MANHOLE W/30" NECK, PER NPC U.G. STD. RS 94, BY NPC CONTRACTOR
- INSTALL 1 1/2" 15 KV AL PRIMARY SPLICE, BY NPC
- INSTALL 3 3WAY MODULES, PER NPC U.G. STD. UJ 101 BY NPC
- INSTALL 1000 MCM 15 KV AL PRIMARY SPLICE PER UG STD US 104, BY NPC
- INSTALL A MODEL # 9 SWITCH BY NPC
- INSTALL 5 6" PLASTIC CONDUIT PER NPC U.G. STD. RC-1 AND RC 2, BY NPC CONTRACTOR
- INSTALL A 4" PLASTIC CONDUIT PER NPC U.G. STD. RC-1 AND RC 2, BY CUSTOMER
- CUT EXISTING CONDUIT AND JOIN WITH A COUPLING BY NPC CONTRACTOR
- NPC CONTRACTOR SHALL ASCERTAIN LOCATION AND DEPTH OF THIS FACILITY BEFORE COMMENCING CONSTRUCTION
- SWEEP CONDUIT WITH A 100" MIN RADIUS FOR A SMOOTH BEND, 4" C BY CUSTOMER 6" C BY NPC CONTRACTOR
- ENCASE PLASTIC CONDUITS IN RED CONCRETE PER RC-3 BY NPC CONTRACTOR
- INSTALL 3 1/2" 15 KV AL PRIMARY CABLE IN CONDUIT BY NPC
- INSTALL 1 1/2" 15 KV AL PRIMARY CABLE IN CONDUIT BY NPC
- INSTALL 3 1000 MCM 15 KV AL PRIMARY CABLE IN 1 OF 5 6" CONDUITS, BY NPC
- CUSTOMER OWNED SERVICE
- STUB OUT 6 PLASTIC CONDUITS 2' PAST DEVELOPMENT AND TAPE END WATERTIGHT AND MARK FOR LOCATION, BY NPC CONTRACTOR
- STUB OUT 4" PLASTIC CONDUIT 2' PAST DEVELOPMENT AND TAPE END WATERTIGHT AND MARK FOR LOCATION BY CUSTOMER
- INSTALL A SINGLE PHASE 50 KVA 2000/120/740 VOLT COMMERCIAL PADMOUNTED TRANSFORMER PER NPC U.G. STD. UJ 105, BY NPC
- INSTALL A THREE PHASE 112KVA 12,470/480Y/277 VOLT PADMOUNTED TRANSFORMER PER NPC U.G. STD. UJ 101 BY NPC
- WATER FROM SPRINKLER SYSTEM SHALL NOT SPRAY OR FLOW ON PAD OR PULLBOX
- EXISTING N.P.C. MANHOLE PER WO# U 97695 DWG# 432-8387
- EXISTING MODEL #11 SWITCH PER WO# U 97695 DWG# 432-8387
- EXISTING 5 6" CONDUIT PER WO# U 97695, DWG# 432-8387
- TOP OF PULLBOX TO BE INSTALLED AT TOP OF SIDEWALK
- TRENCHING AND BACKFILL BY CUSTOMER
- INSTALL A 3 PHASE TRANSFORMER PAD PER NPC U.G. STD. RS 36 BY CUSTOMER
- INSTALL A PAD FOR A SINGLE PHASE COMMERCIAL TRANSFORMER PER NPC U.G. STD. RS 19 BY CUSTOMER
- EXISTING 3 1000 MCM CABLE PER WO# U-97125 DWG# 432-8387
- TRENCHING AND BACKFILL BY NPC CONTRACTOR

NOTIFY NPCO INSPECTOR 48 HOURS IN ADVANCE OF START OF ELECTRICAL CONSTRUCTION PHONE 567-4115

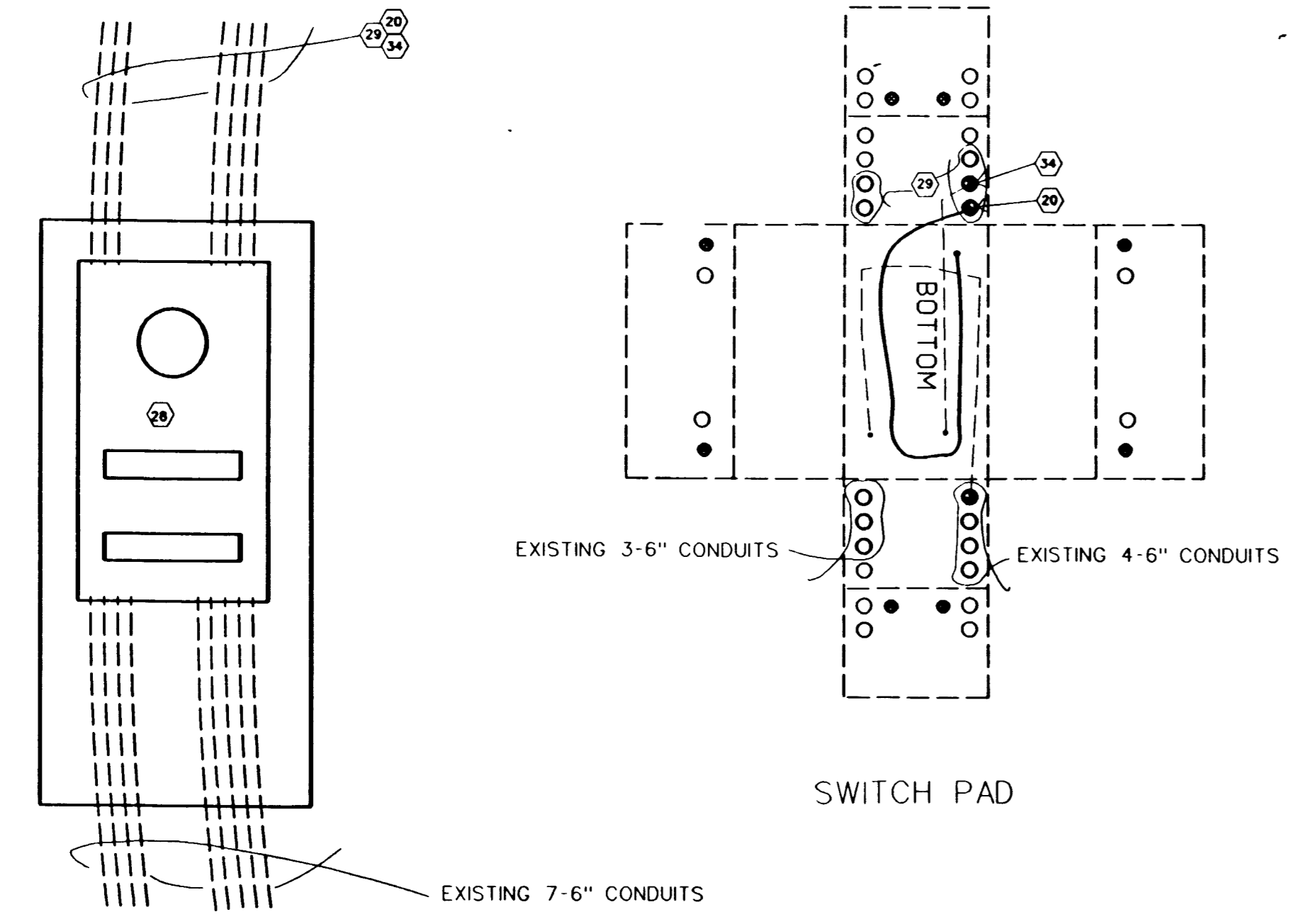
TYPE OF EASEMENT

STANDARD AS BUILT UNDERGROUND	<input type="checkbox"/>
AERIAL	<input type="checkbox"/>
STANDARD R/W -31 UNDERGROUND	<input type="checkbox"/>
UNDERGROUND BY EXHIBIT	<input type="checkbox"/>
PERMIT HIGHWAY	<input type="checkbox"/>
BLM	<input type="checkbox"/>
NOT REQUIRED	<input type="checkbox"/>

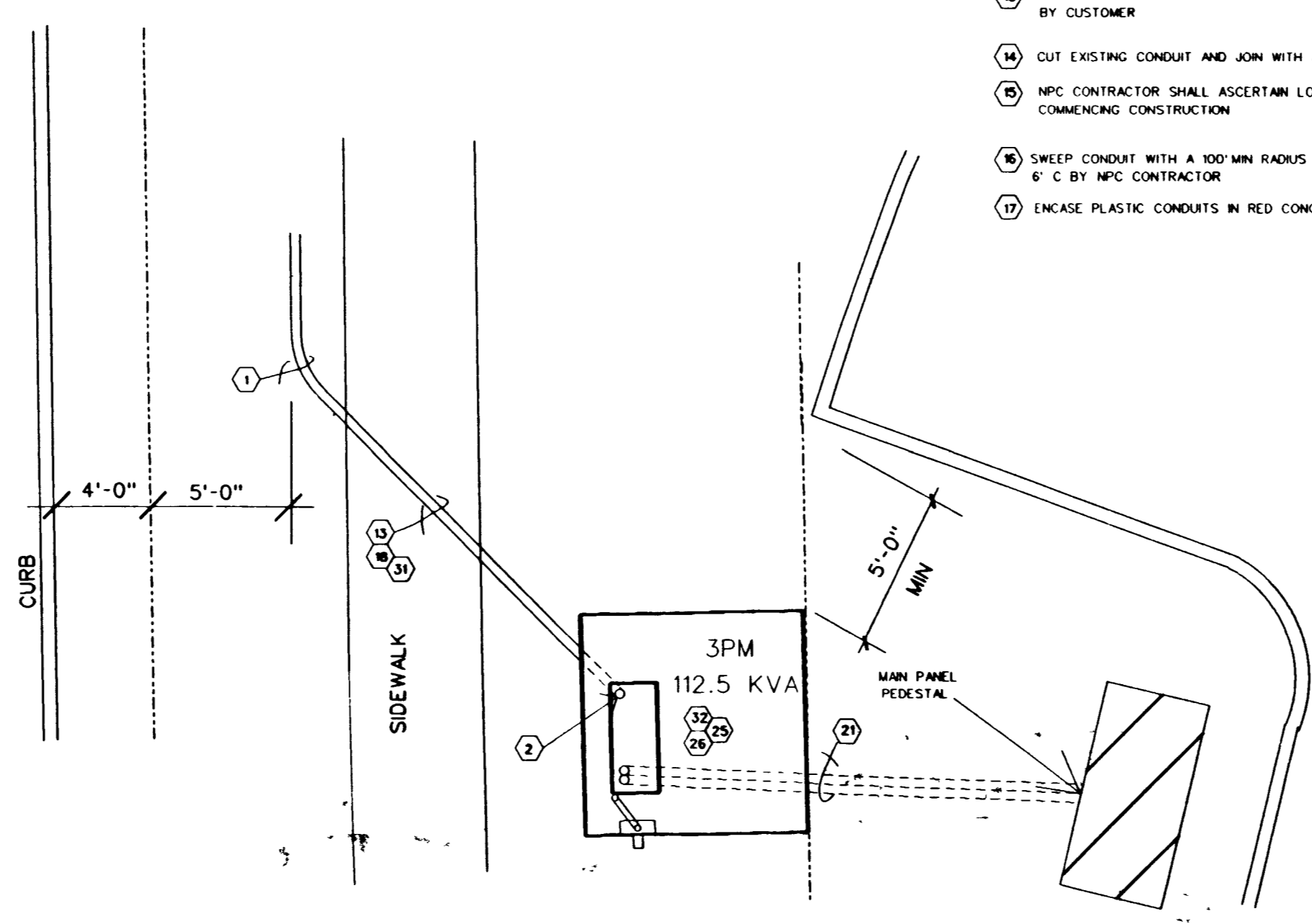
EVERY EFFORT HAS BEEN MADE TO IDENTIFY ALL NPC FACILITIES. THE CUSTOMER SHALL CONFIRM THE EXISTENCE AND LOCATION OF THESE FACILITIES

ANY MODIFICATIONS OF NEVADA POWER COMPANY'S DESIGN MUST BE APPROVED BY THE ENGINEERING DEPARTMENT
DESIGNER EUGENE STATEN
PHONE 367-5487
BS. REP. JOHN REID
PHONE 367-5235

NOTE:
CUSTOMER SHALL BE RESPONSIBLE FOR THE COST OF ALL 4" CONDUIT, X FMR PADS AND PULLBOXES
N.P.C. SHALL BE RESPONSIBLE FOR ALL 6" CONDUIT, MANHOLES, SWITCH PADS, AND PRIMARY ELECTRICAL EQUIPMENT.



DETAIL 'C'
SCALE: 1" = 5'-0"



DETAIL 'E'
SCALE: 1" = 5'-0"

Call before you Dig.

1 800-227-2600 UNDERGROUND SERVICE USA

REVISION	DESTROY ALL OTHER PLOTS
CUST. APPROVAL DATE	
GOVT. APPROVAL DATE	
SEE SHY #1 OF 2	
SEE SHY #1 OF 2	
REVISED PER CLV TRENCH REOMT	4/4/91 ETS
NO REVISIONS	DATE BY CHK'D

INQ NO. 01541
NEVADA POWER COMPANY
LAS VEGAS, NEVADA
BRUCE TRENT PARK
ANGEL PARK NORTH P2

DWG NO. 432 9404	SHT. NO. 2 OF 2
W.O. NO. U-16004	SCALE: 1" = 40'
DWG. DATE: 11-29-90	REVISION DATE:

