

LOCATION SIGNS SEE DETAIL C-26.12

- ① EVENT AREA
- ② PICNIC AREA
- ③ PLAYGROUND
- ④ FITNESS AREA
- ⑤ TENNIS COURTS
- ⑥ CHAMPIONSHIP FIELD
- ⑦ FIELD #2
- ⑧ FIELD #3
- ⑨ FIELD #4
- ⑩ SOFTBALL COMPLEX
- ⑪ VOLLEYBALL COURT #1
- ⑫ VOLLEYBALL COURT #2
- ⑬ VOLLEYBALL COURT #3
- ⑭ GROUP SHELTER #1
- ⑮ GROUP SHELTER #2
- ⑯ HORSESHOES
- ⑰ NO BIKES
(WITH INTERNATIONAL "NO BICYCLE RIDING" SYMBOL)

POST-AND-CHAIN BARRIER. SEE DETAIL C-30.7

LINE TABLE

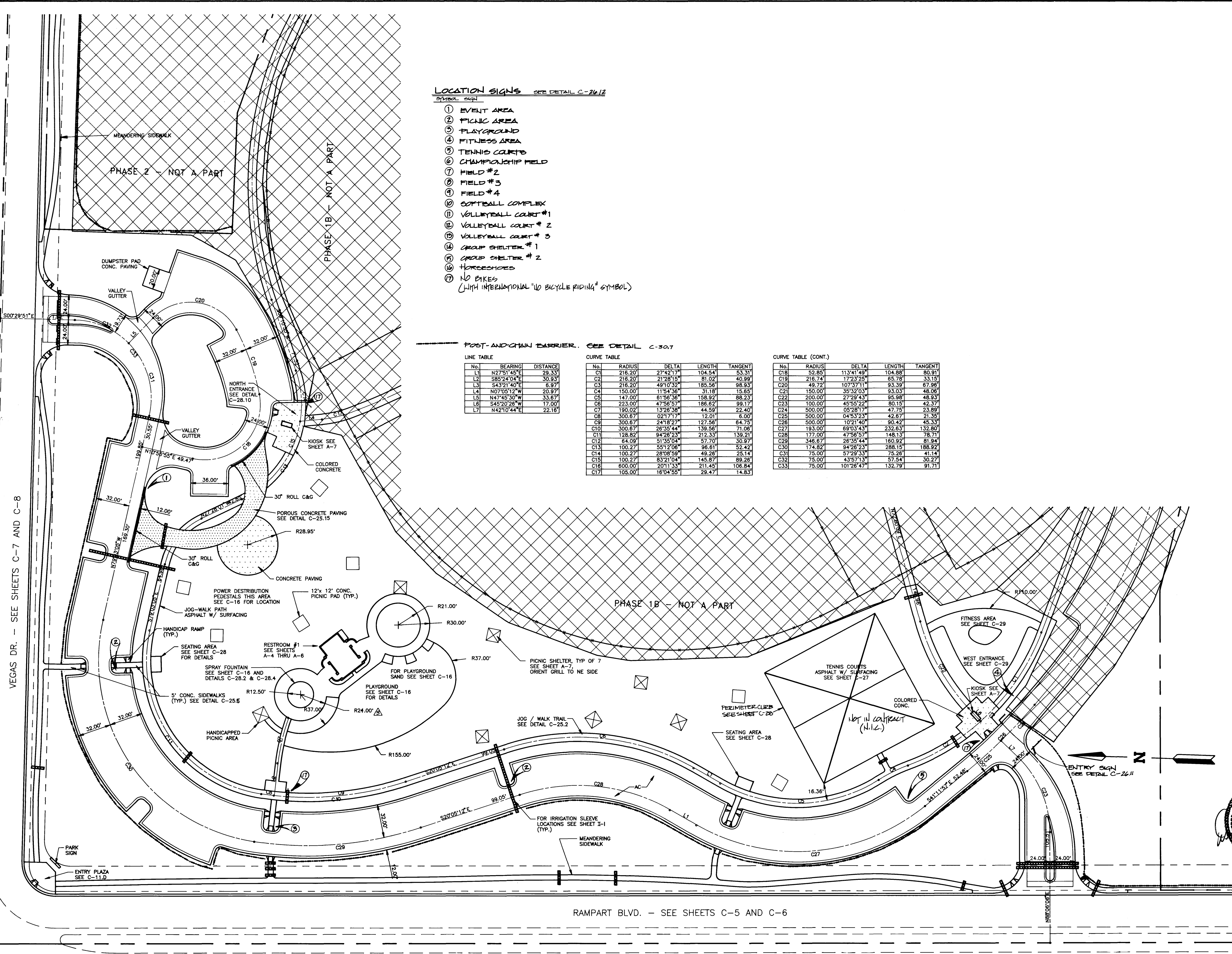
No.	BEARING	DISTANCE
L1	N27°51'45"E	29.33'
L2	S85°24'04"E	30.93'
L3	S43°21'40"E	6.97'
L4	N07°05'12"W	20.97'
L5	N47°45'30"W	33.67'
L6	S45°20'28"W	17.00'
L7	N42°10'44"E	22.18'

CURVE TABLE

No.	RADIUS	DELTA	LENGTH	TANGENT
C1	216.20'	27°42'17"	104.54'	53.31'
C2	216.20'	21°28'15"	81.02'	40.99'
C3	216.20'	49°10'32"	185.56'	98.93'
C4	150.00'	11°54'36"	31.18'	15.65'
C5	147.00'	81°56'36"	158.92'	88.23'
C6	223.00'	47°56'57"	166.82'	98.17'
C7	180.02'	13°28'38"	44.59'	22.40'
C8	300.67'	02°17'17"	12.01'	6.00'
C9	300.67'	24°18'27"	127.56'	64.75'
C10	300.67'	28°35'44"	139.56'	71.06'
C11	128.82'	94°28'23"	212.33'	135.21'
C12	64.09'	51°35'04"	57.70'	30.97'
C13	100.27'	55°12'06"	96.61'	52.42'
C14	100.27'	28°08'59"	49.26'	25.14'
C15	100.27'	83°21'04"	145.87'	88.26'
C16	600.00'	20°11'33"	211.45'	106.84'
C17	105.00'	16°04'55"	28.47'	14.83'

CURVE TABLE (CONT.)

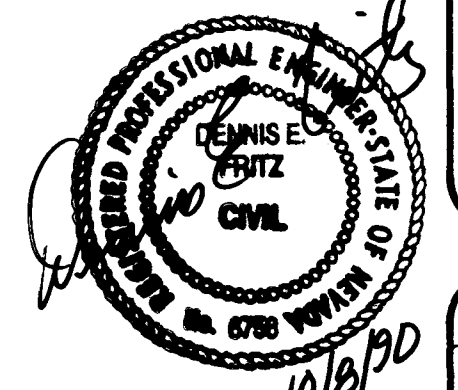
No.	RADIUS	DELTA	LENGTH	TANGENT
C18	52.85'	113°41'49"	104.88'	80.91'
C19	216.74'	17°23'25"	65.78'	33.15'
C20	49.72'	107°37'11"	93.39'	67.96'
C21	150.00'	35°32'03"	93.03'	48.06'
C22	200.00'	27°29'43"	95.98'	48.93'
C23	100.00'	45°55'22"	80.13'	42.37'
C24	500.00'	05°28'17"	47.75'	23.89'
C25	500.00'	04°53'23"	42.67'	21.35'
C26	500.00'	10°21'40"	90.42'	45.33'
C27	193.00'	69°03'43"	232.83'	132.80'
C28	177.00'	47°56'57"	148.13'	78.71'
C29	346.67'	28°35'44"	180.92'	81.94'
C30	174.82'	84°26'23"	288.15'	188.92'
C31	75.00'	57°29'33"	75.26'	41.14'
C32	75.00'	43°29'13"	57.54'	30.27'
C33	75.00'	101°28'47"	132.79'	91.71'



LAYOUT AND DIMENSION PLAN *
PHASE 1A

Angel Park North

* INCLUDING POST-AND-CHAIN FENCE LAYOUT



WD NO. 3981
BY W.M.H.
DATE 10/5/90
SCALE 1"=40'

SHEET 12
C-12
OF 76 SHEETS
650.14-V14

CONSULTING ENGINEERS - PLANNERS
2300 PASEO DEL PRADO BUILDING A SUITE 100
LAS VEGAS, NEVADA 89102 PHONE (702) 873-7550

REVISION

REV	DATE	BY	REVISION
3	8-1-91	GST	REVISE PERMANENT WIDTH FROM 11' TO 11'
2	4-1-91	MAG	REVISED TENNIS COURTS & NOTES
1	9-28-90	MAA	REVISED SIGN LOCATIONS

VEGAS DR. - SEE SHEETS C-7 AND C-8

RAMPART BLVD. - SEE SHEETS C-5 AND C-6

