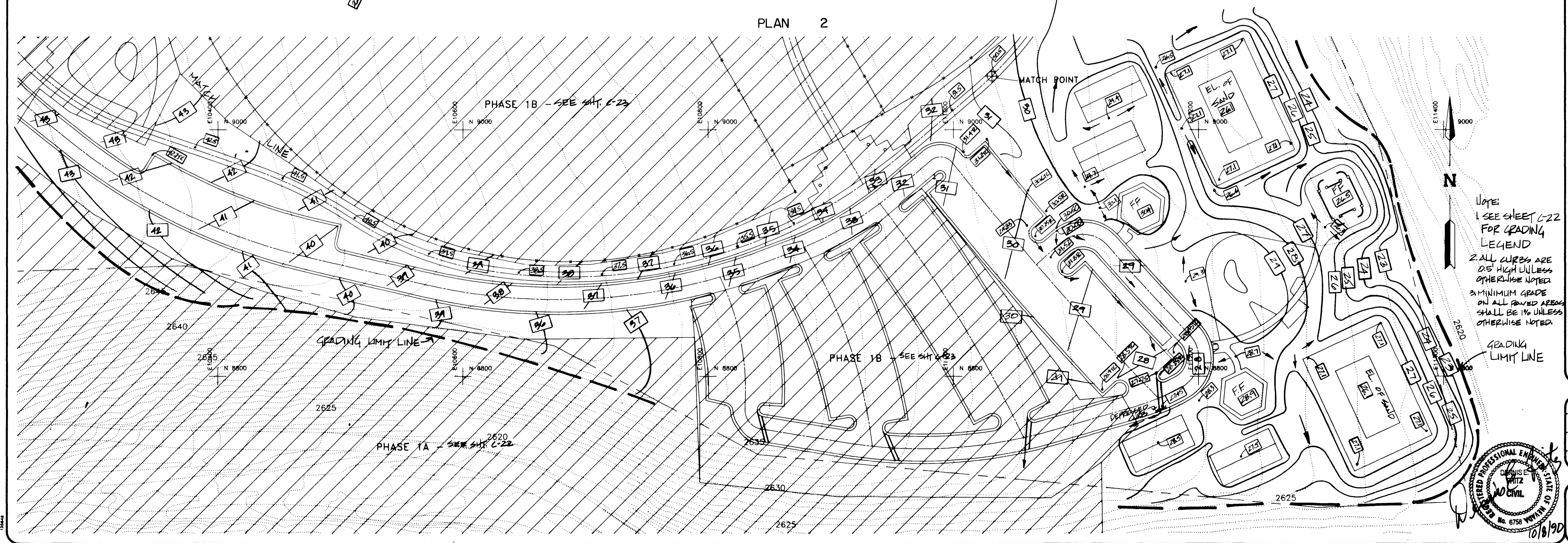
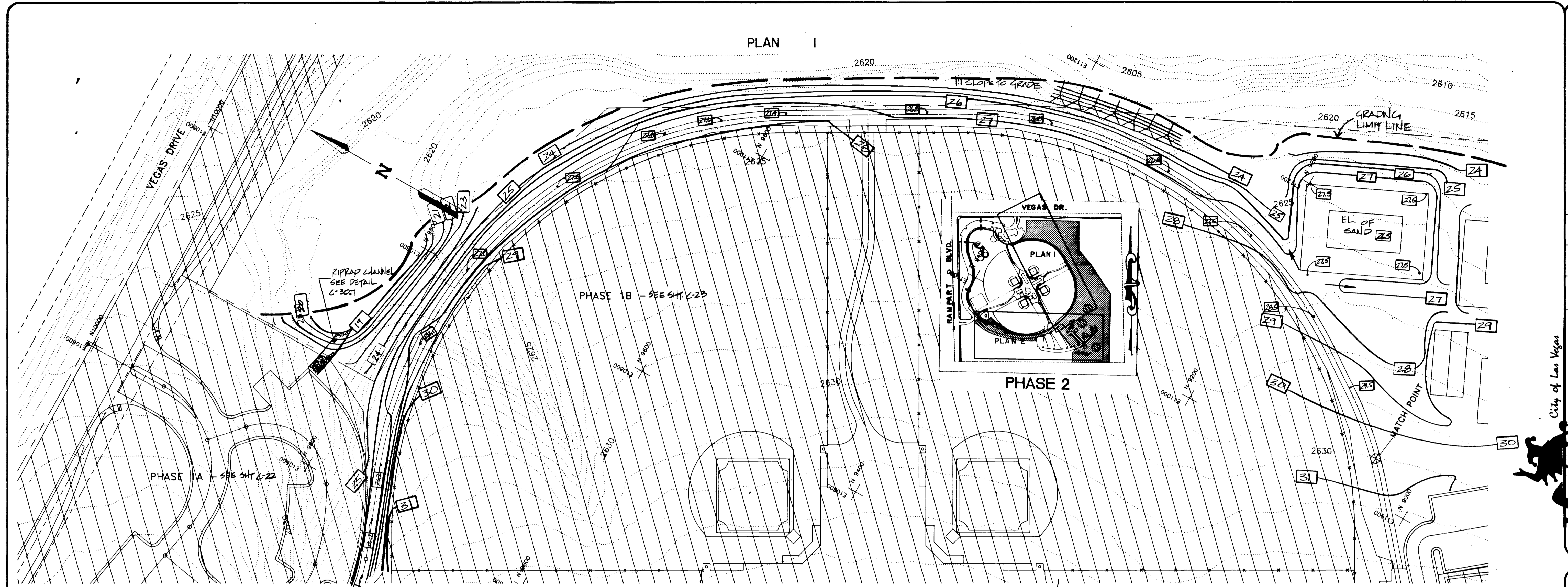


10-13-98



Note:
 1. SEE SHEET C-22 FOR GRADING LEGEND
 2. ALL CURBS ARE 2'5" HIGH UNLESS OTHERWISE NOTED
 3. MINIMUM GRADE ON ALL PAVED AREAS SHALL BE 1% UNLESS OTHERWISE NOTED

GRADING LIMIT LINE



10/18/98

City of Las Vegas
Parks and Leisure Activities

CONSULTING ENGINEERS - PLANNERS
 2300 PASEO DEL PRADO, BUILDING A, SUITE 100
 LAS VEGAS, NEVADA 89102 PHONE (702) 873-7550

vtm nevada

REV	DATE	BY	REVISION

GRADING PLAN
 PHASE 2

Angel Park North

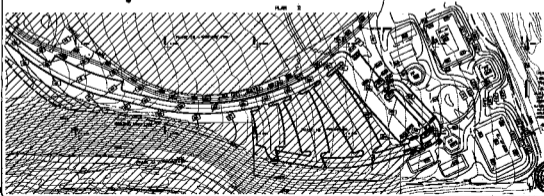
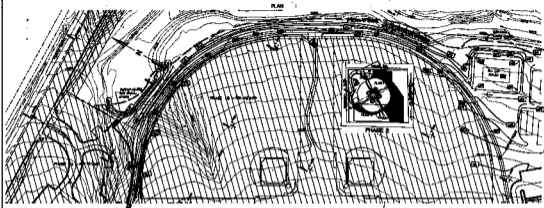
TITLE PROJECT

NO. NO. 3981
 BY J.P.C.
 DATE
 SCALE 1"=40'

SHEET 23
C-24
 OF 76 SHEETS
 650.14-V14

1176

APPLICABLE ITEMS ONLY



DATE	1954
BY	W. J. ...
CHECKED BY	...
APPROVED BY	...
DESIGNED BY	...
DRAWN BY	...
CHECKED BY	...
APPROVED BY	...

GRADING PLAN
PHASE 2
Angel Peak North

DATE	1954
BY	W. J. ...
CHECKED BY	...
APPROVED BY	...
DESIGNED BY	...
DRAWN BY	...
CHECKED BY	...
APPROVED BY	...



APPROVED FOR THE CITY OF LOS ANGELES