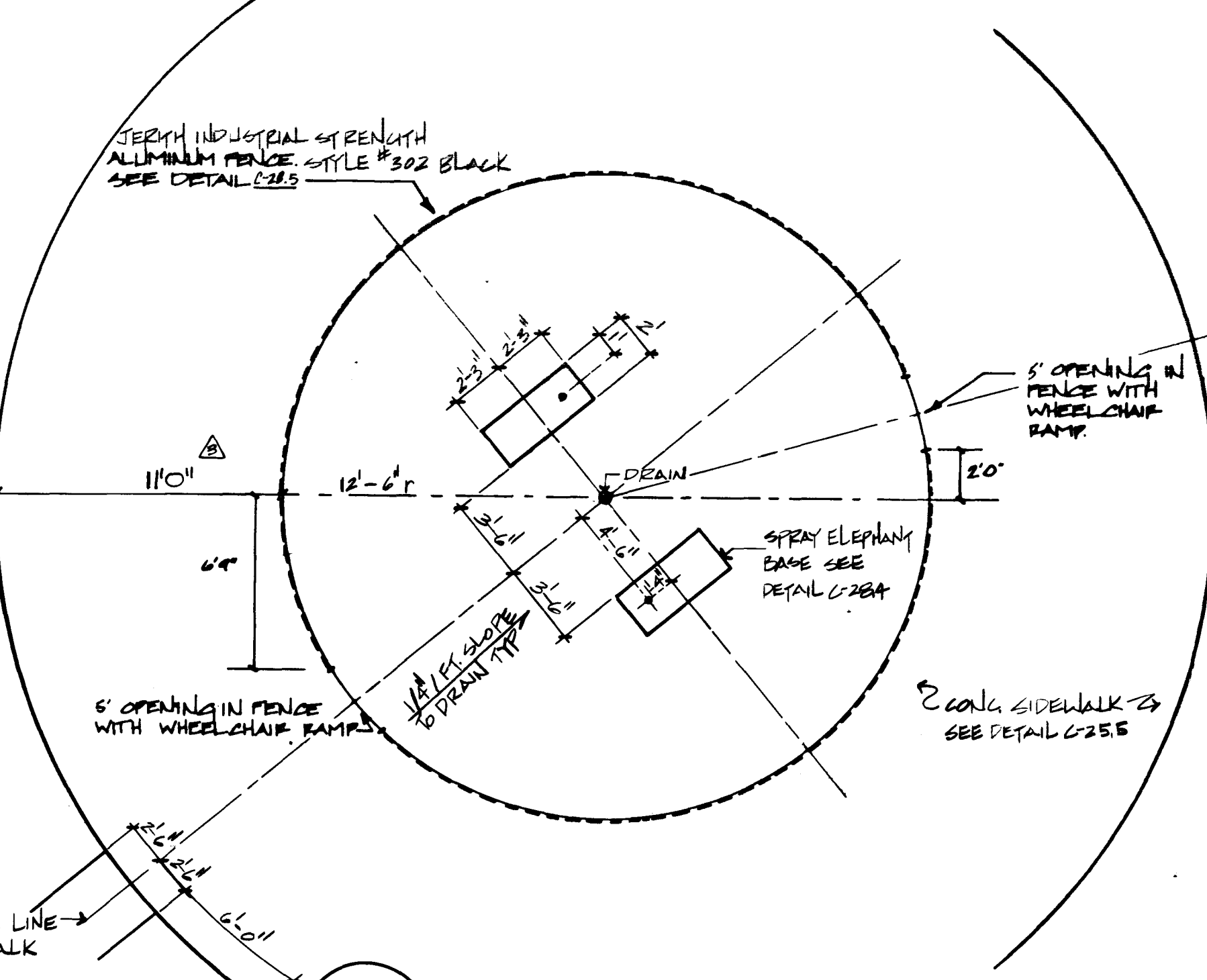
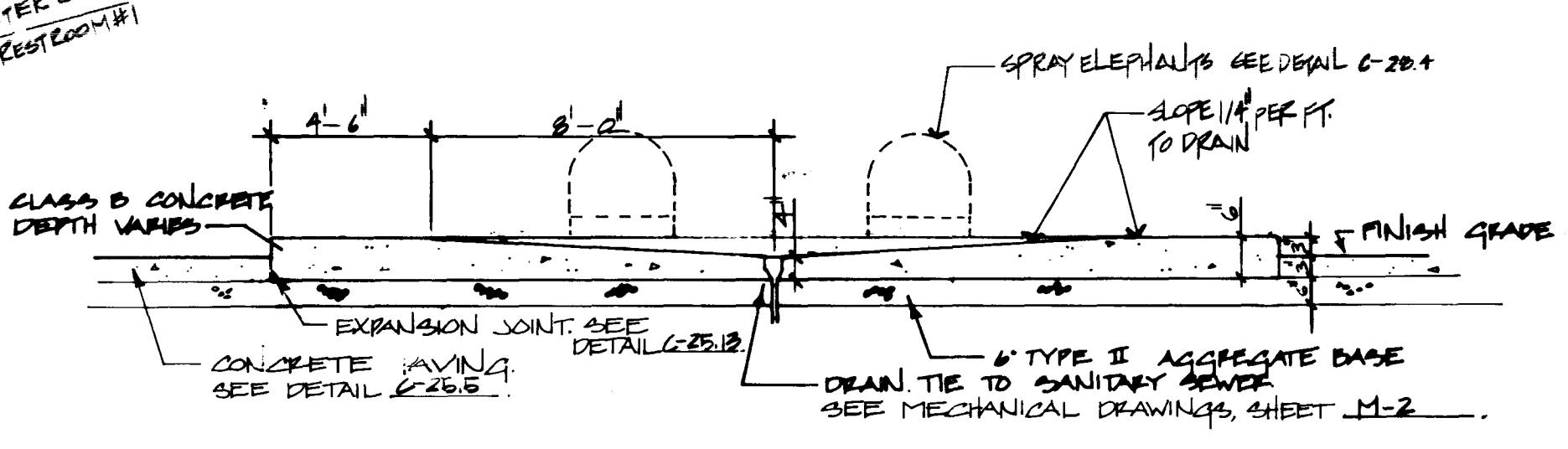


NOTE: PAINTED COURT SURFACE TO BE 100% ACRYLIC TENNIS COURT PAINT, COLOR AS SHOWN ON SHEET C-219. ON MULTIPLE-COAT SAND-EMULSION FINISH COURSE. APPLY A MINIMUM OF 3 COATS SAND EMULSION OR AS MANY AS REQUIRED TO ACHIEVE A UNIFORMLY-TEXTURED SURFACE.

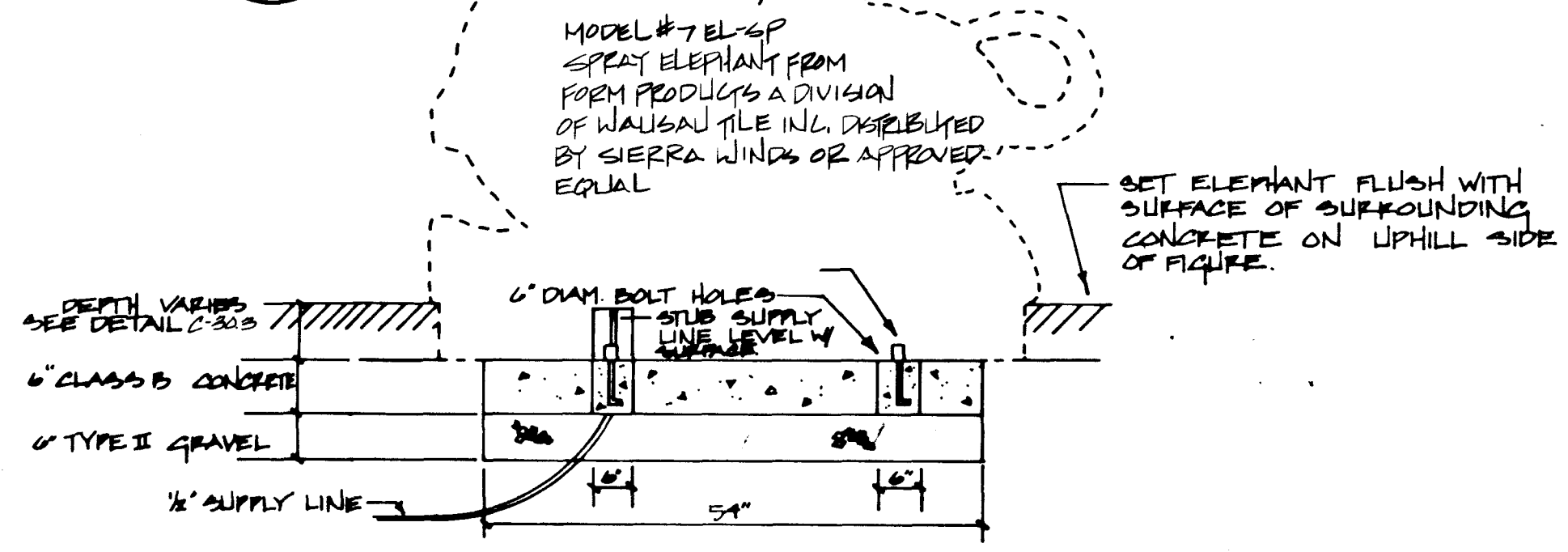
C-28.1 TENNIS COURT PAVEMENT-SECTION



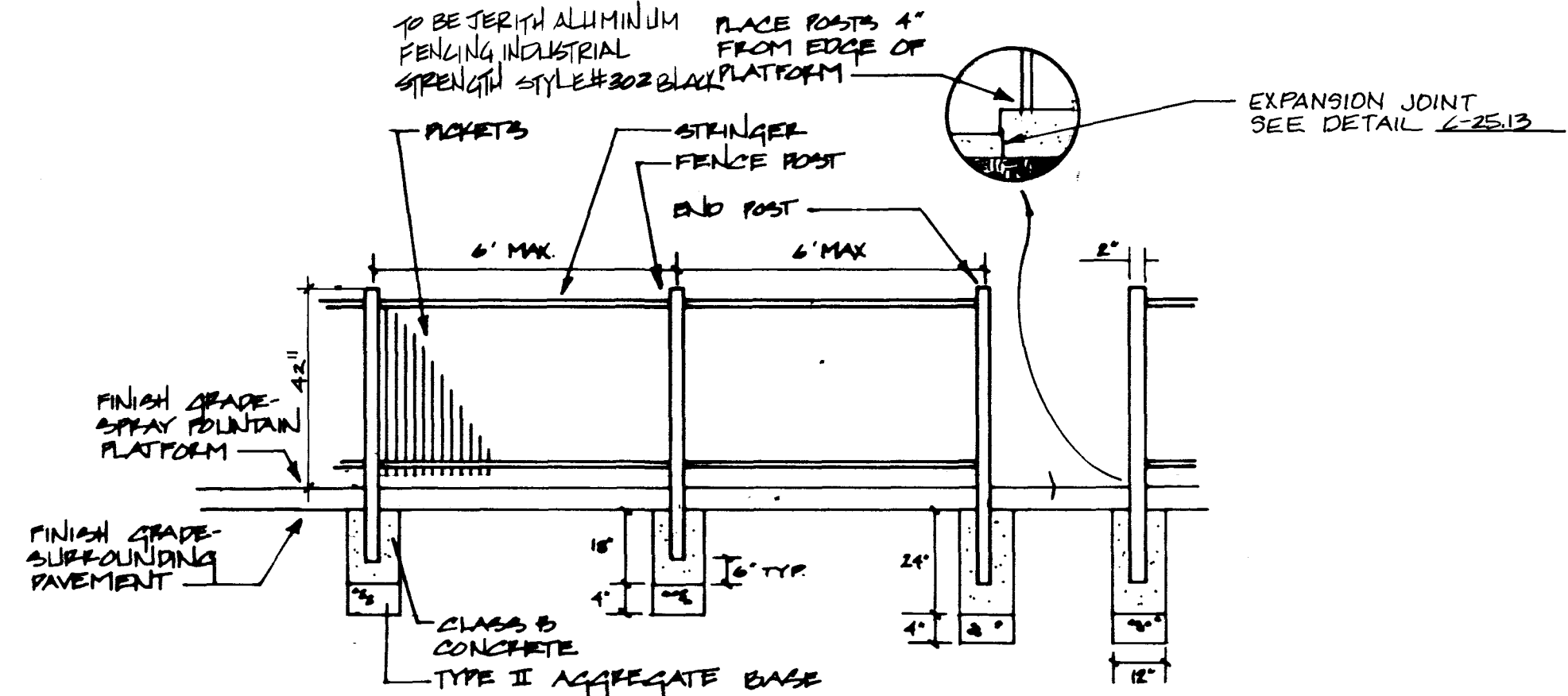
C-28.2 SPRAY FOUNTAIN-PLAN SCALE: 1\"/>



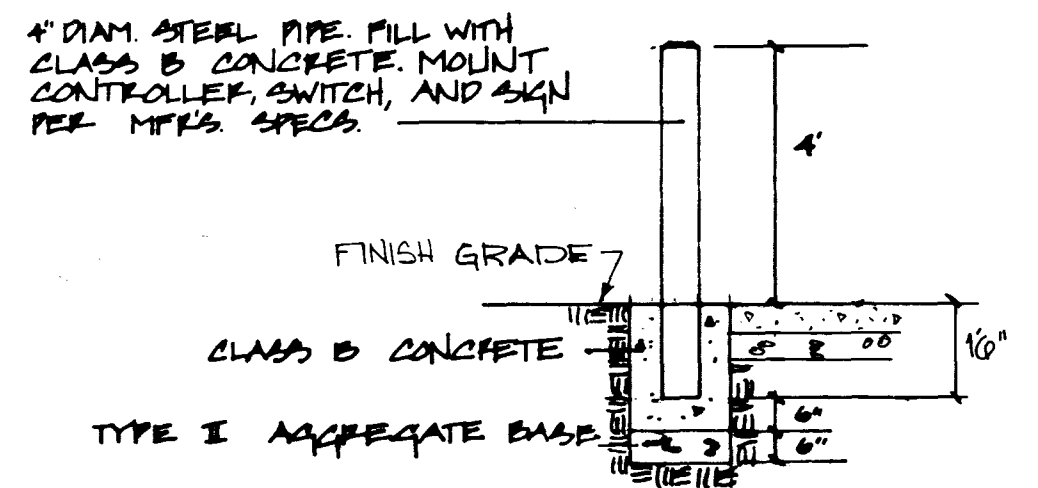
C-28.3 SPRAY FOUNTAIN SECTION



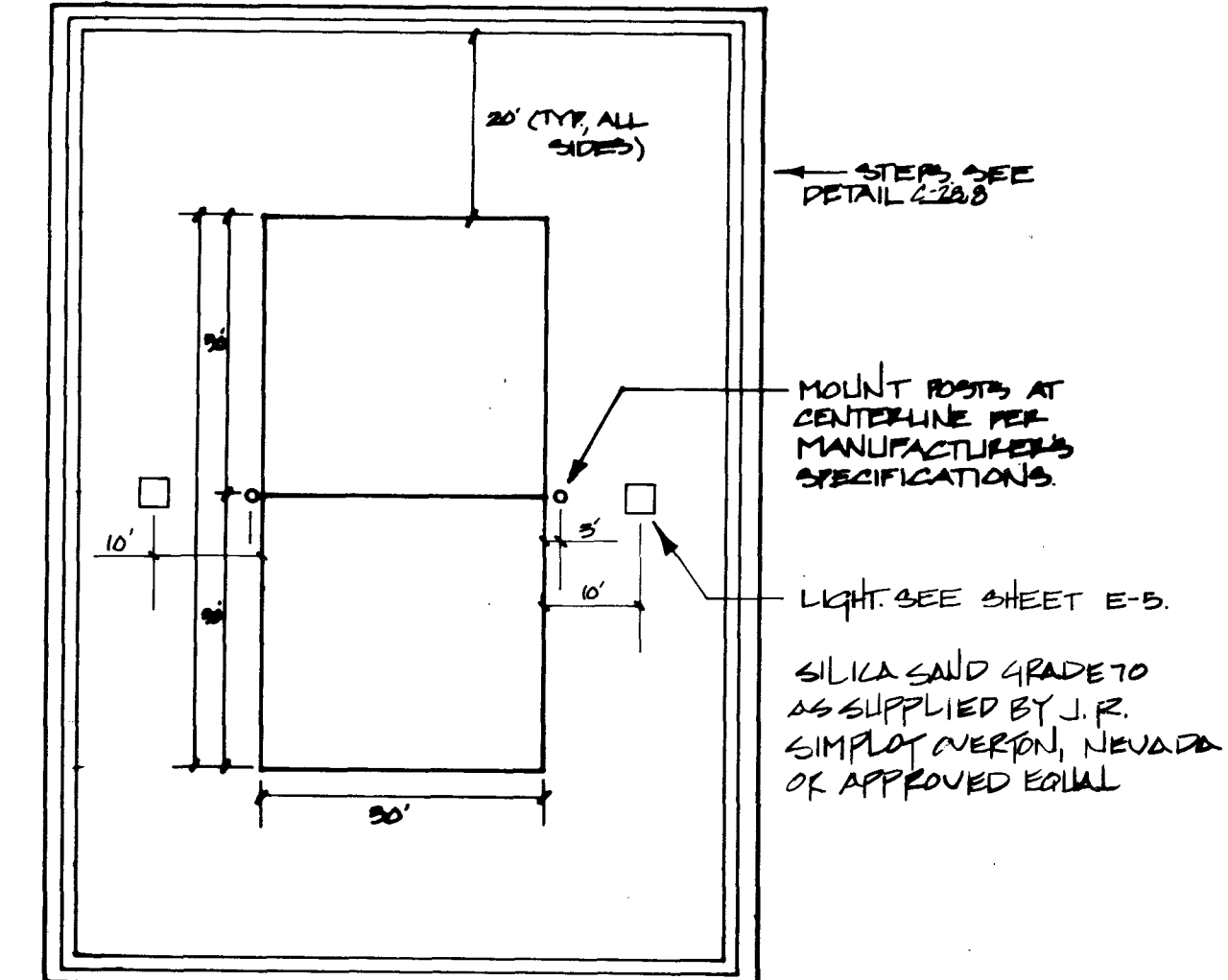
C-28.4 SPRAY ELEPHANT



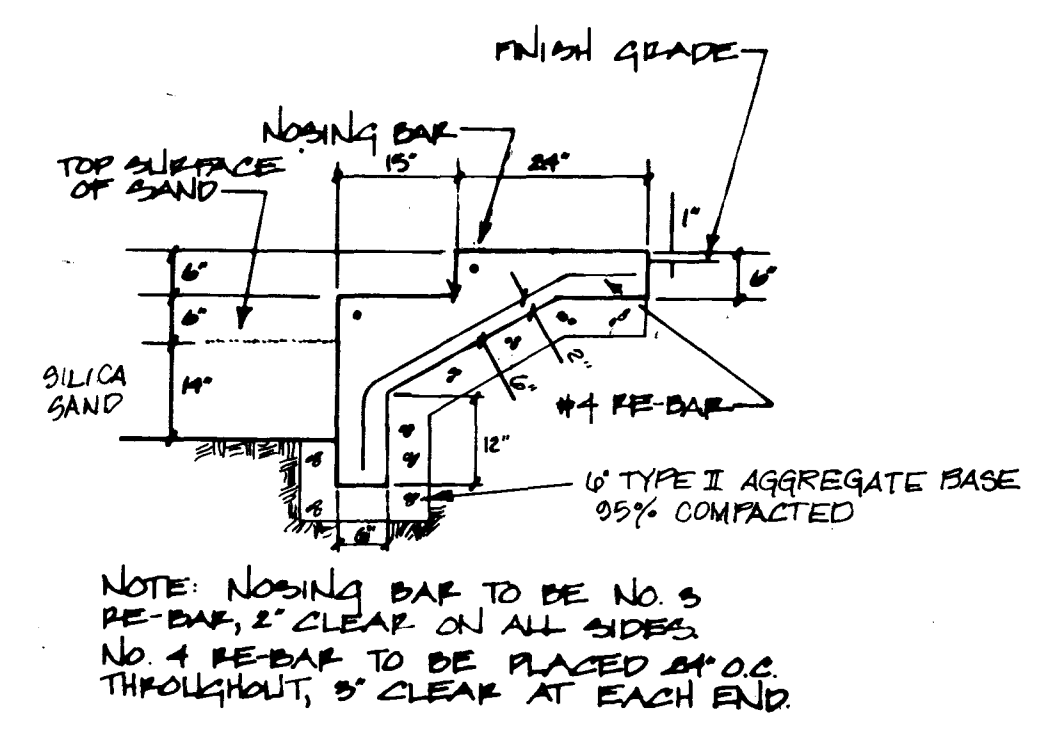
C-28.5 SPRAY FOUNTAIN ALUMINUM FENCE



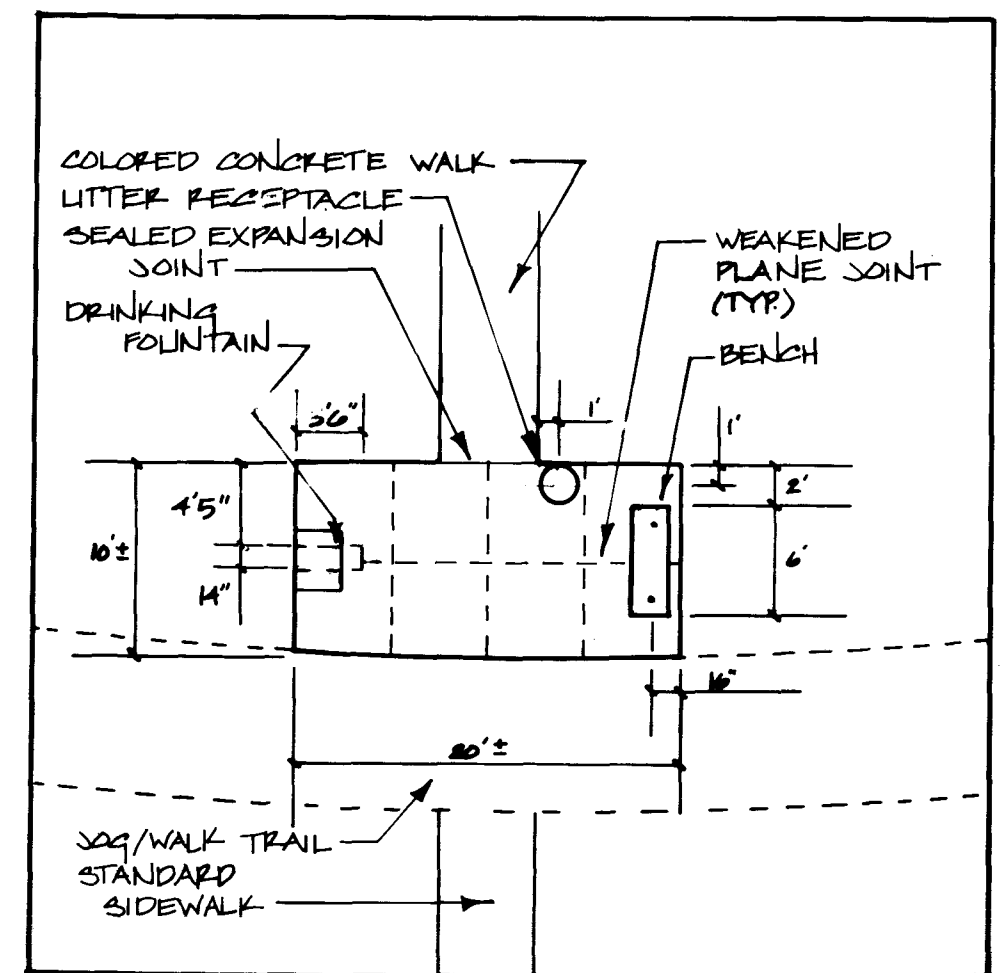
C-28.6 CONTROLLER MOUNT



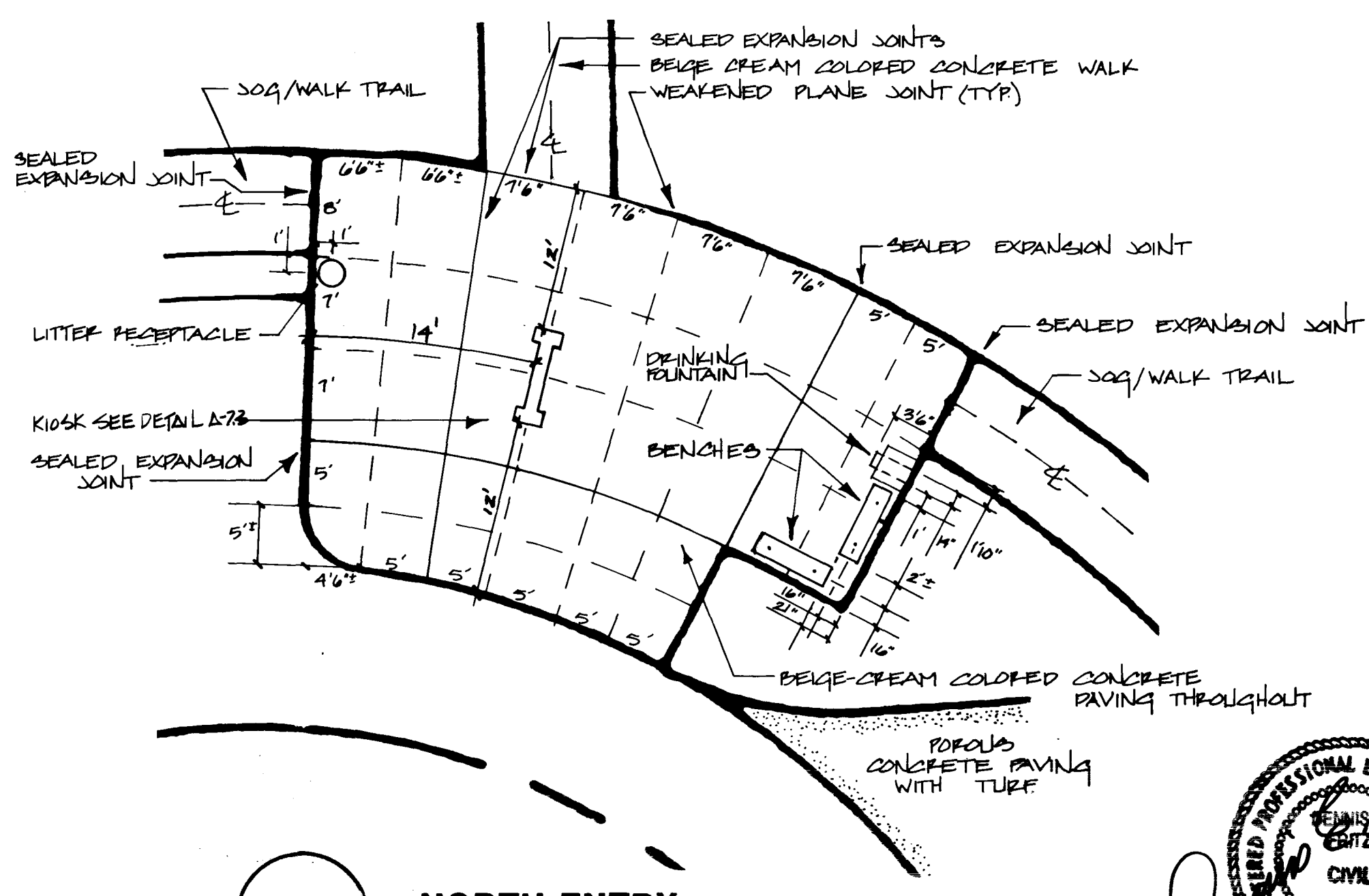
C-28.7 VOLLEYBALL COURT-PLAN



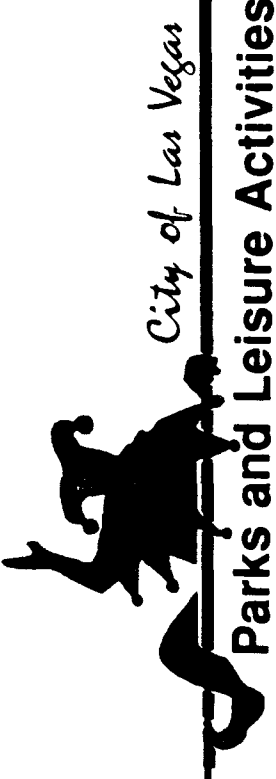
C-28.8 STEPS-SECTION



C-28.9 TYPICAL SEATING AREA



C-28.10 NORTH ENTRY



Parks and Leisure Activities

Angel Park North

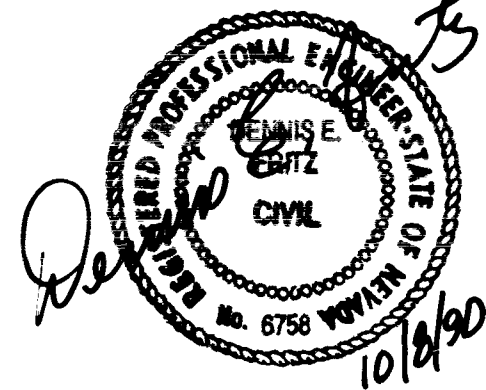
SITE IMPROVEMENT DETAILS

NO. NO.	3981
BY	P.C.B.
DATE	10/5/90
SCALE	NONE

SHEET	27
C-28	
OF 76 SHEETS	
850.14-V14	

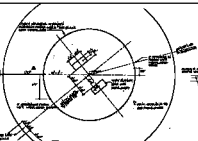
PLANNERS
ENGINEERS
CONSULTING ENGINEERS -
2300 PASEO DEL PRADO BUILDING A SUITE 100
LAS VEGAS, NEVADA 89102 PHONE (702) 873-7550

vtm nevada





(A-24) TENNIS COURT PAVING SECTION



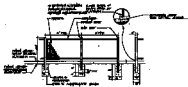
(A-25) SPRAY FOUNTAIN PLAN



(A-26) SPRAY FOUNTAIN SECTION



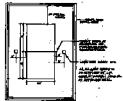
(A-27) SPRAY ELEVATION



(A-28) SPRAY FOUNTAIN ALUMINUM FRAME



(A-29) CONTROLLER COURT



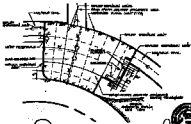
(A-30) VOLLEYBALL COURT PLAN



(A-31) STAIRS SECTION



(A-32) TYPICAL SEATING AREA



(A-33) NORTH ENTRY



City of Los Angeles
 Department of Public Works
 Engineering Division
 1200 N. G Street, Los Angeles, California 90012
 215-373-3000

SITE IMPROVEMENT DETAILS
 Angel Park North

DATE: 08/11/10
 DRAWN BY: [Signature]
 CHECKED BY: [Signature]
 APPROVED BY: [Signature]
 SHEET NO. 27
 C-28