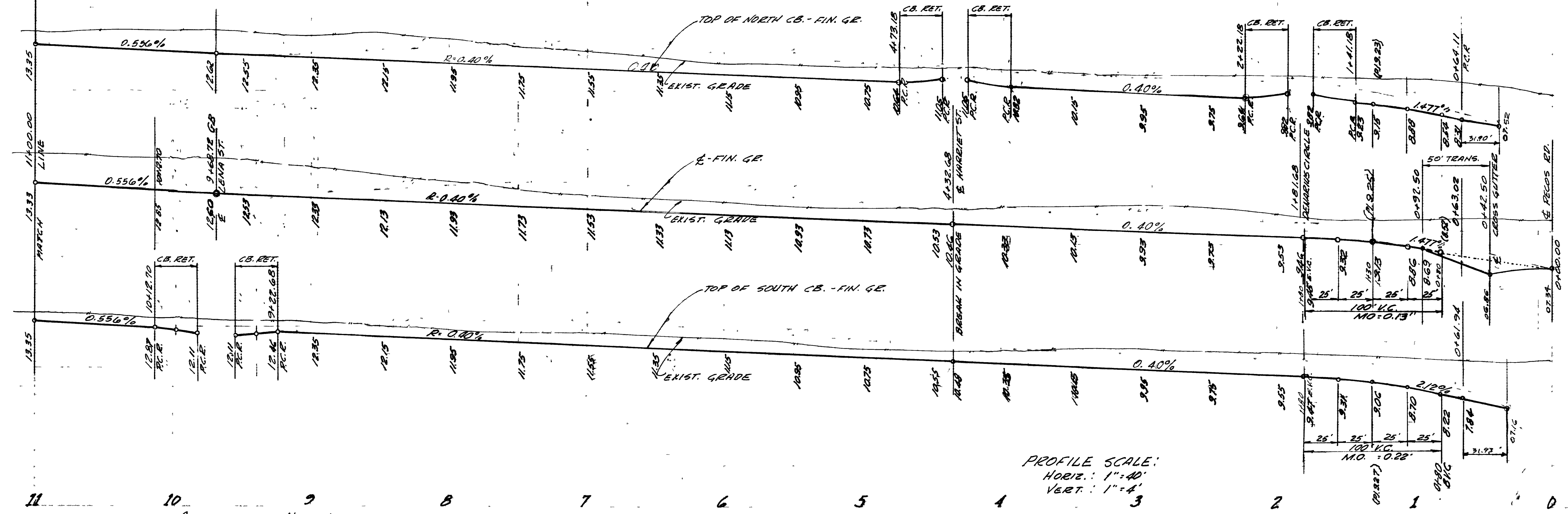


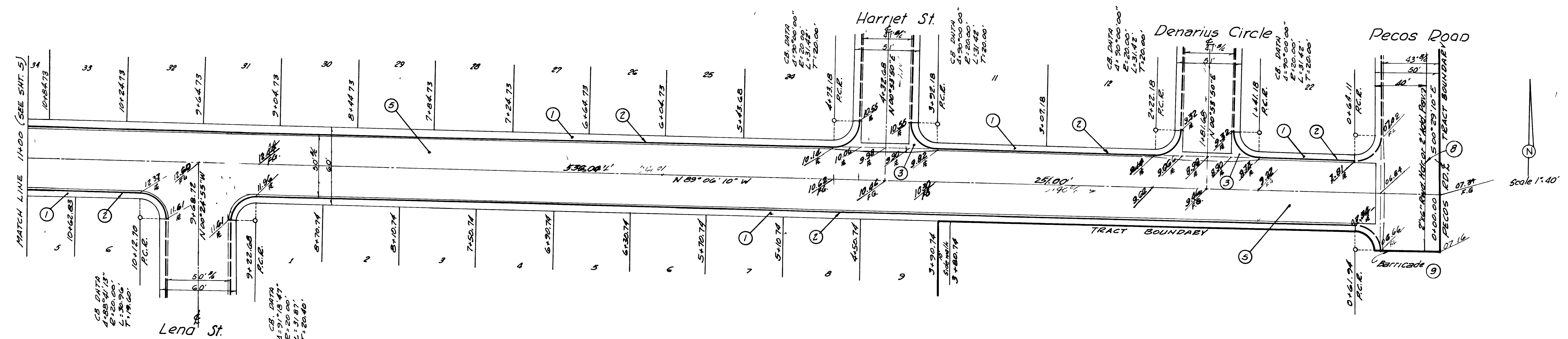
1815
N. CB.
1810
1815
E
1810
1815
S. CB.
1810

1815
N. CB.
1810
1815
E
1810
1815
S. CB.
1810



PROFILE SCALE:
HORIZ.: 1"=40'
VERT.: 1"=4'

- CONSTRUCTION NOTES:
- ① CONST. 4" CONC. SIDEWALK WITH 5" TYPE II BASE AS PER DET. ON SHT. N^o 1.
 - ② CONST. TYPE "L" CURB & GUTTER AS PER DET. ON SHT. N^o 1.
 - ③ CONST. STD. VALLEY GUTTER AS PER DET. ON SHT. N^o 1.
 - ④ CONST. 2" ASPH. CONC. OVER 4" TYPE II GRAVEL BASE OVER 15" TYPE I GRAVEL BASE AS PER DET. ON SHT. N^o 1.
- ALL DIM'S ARE TO BACK OF CURB.



Osage Avenue
(0.48' CROWN)

1.	8-8-63	Lowered grades on Osage Ave.	A.M.
Revision	Date	Description	Approval
<p style="text-align: center;">COLLEGE PARK N^o 24 STREET PLANS</p>			4
<p>Submitted by: <i>Victor G. Kramelbauer</i> Approved by: <i>[Signature]</i> City Engineer RE 306 Date 5-7-63</p>			of 13

