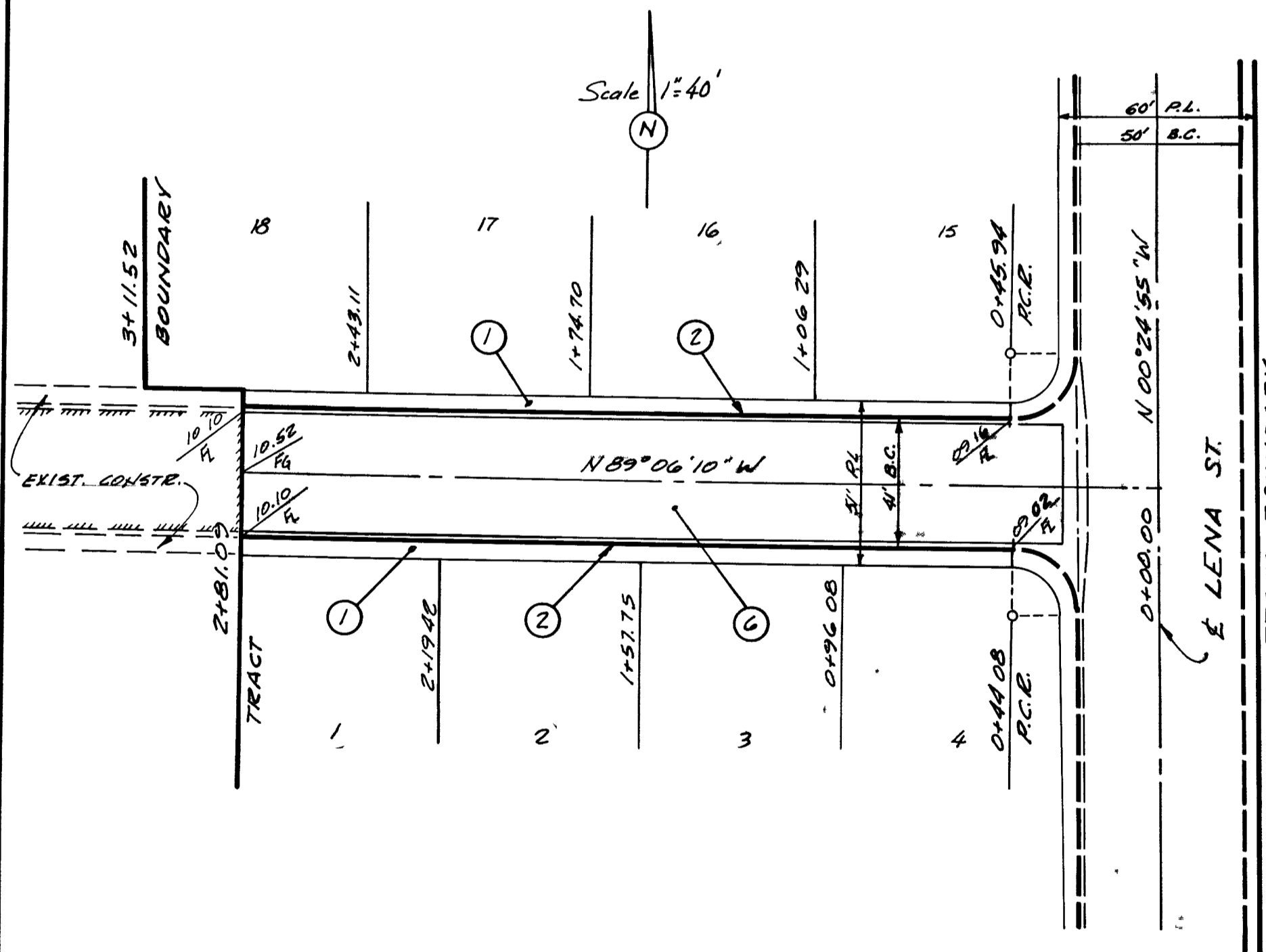
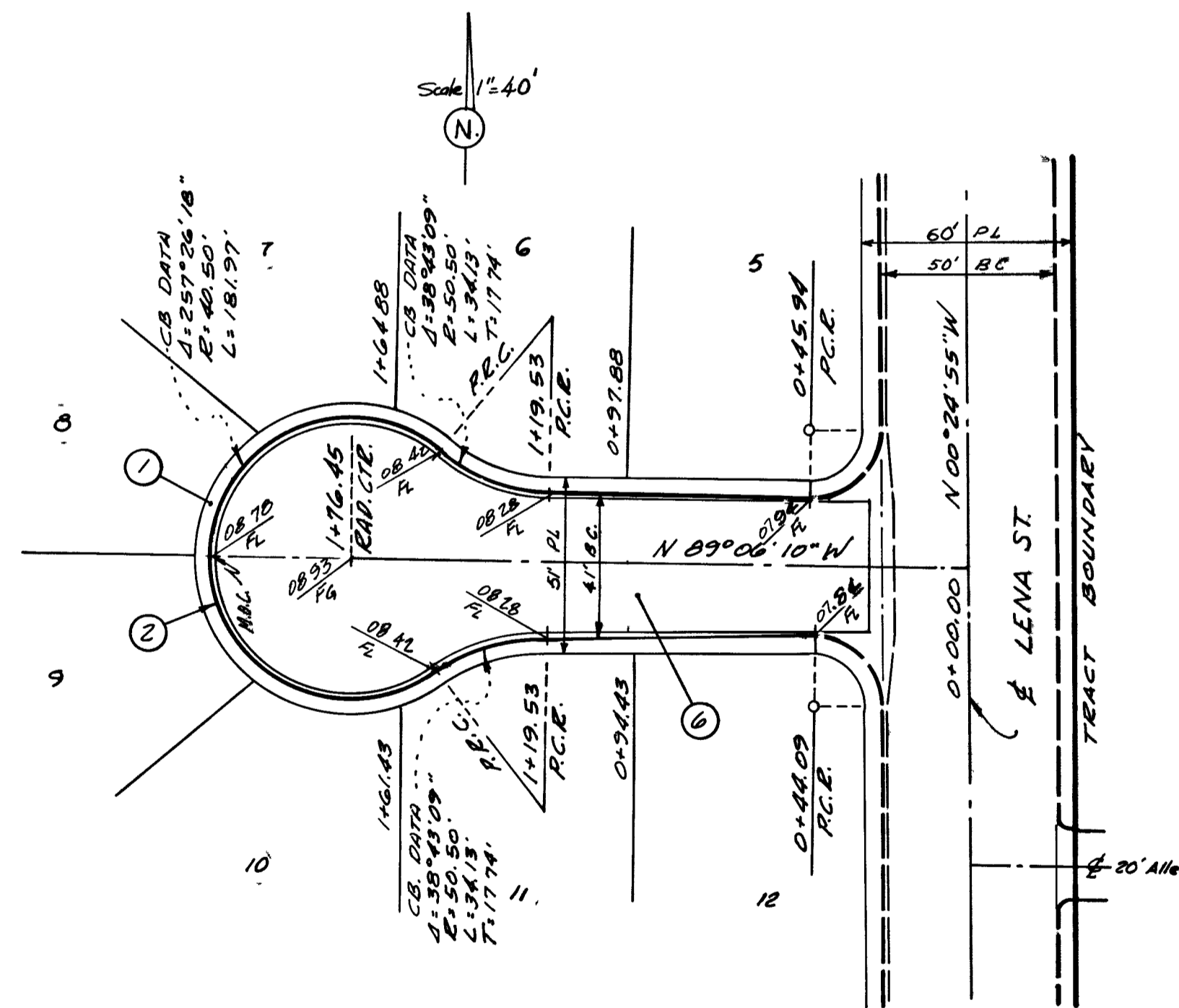


PROFILE SCALES:
 HORIZ. : 1" = 40'
 VERT. : 1" = 4'

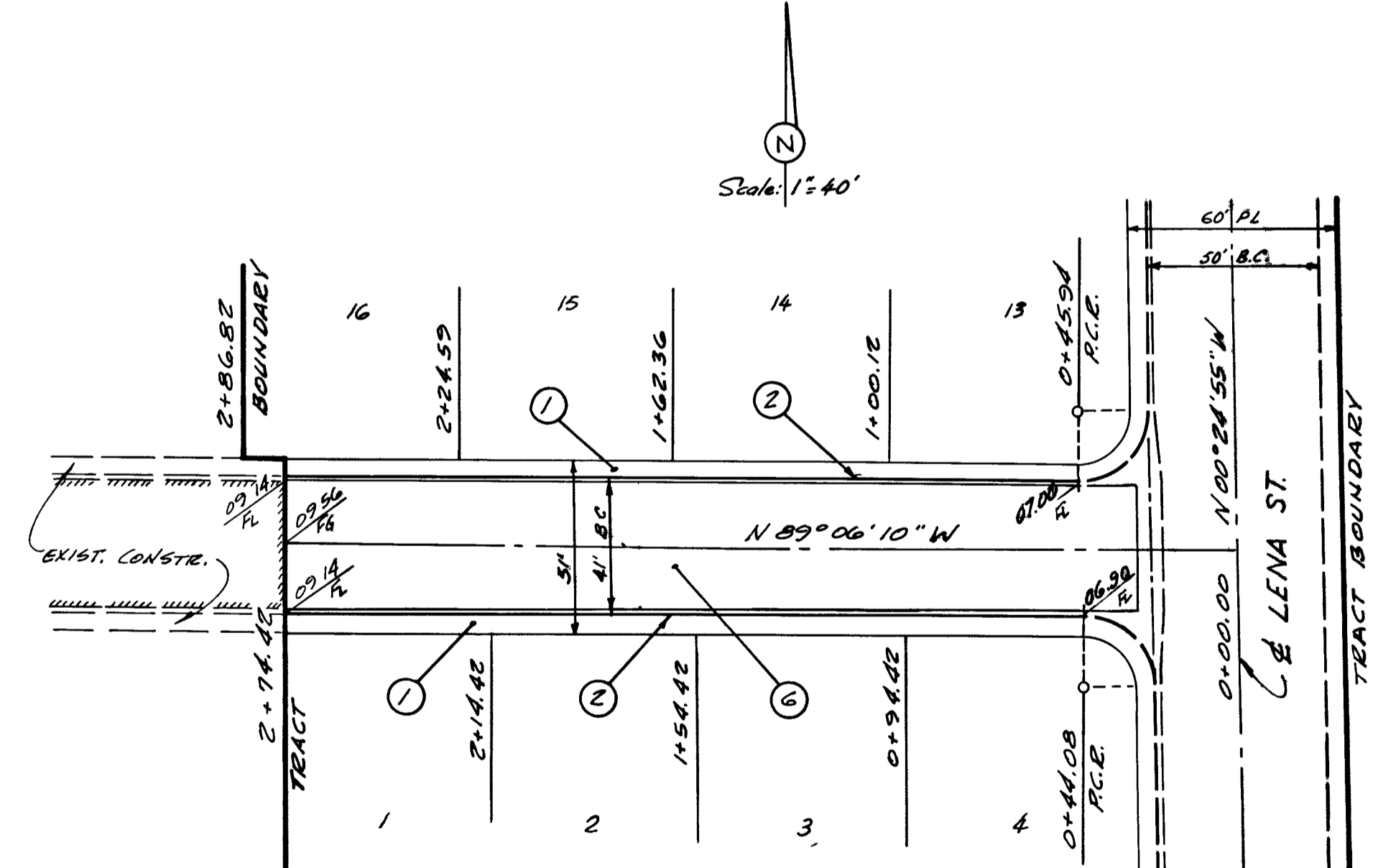


TERESA AVE.
(0.42' CROWN)



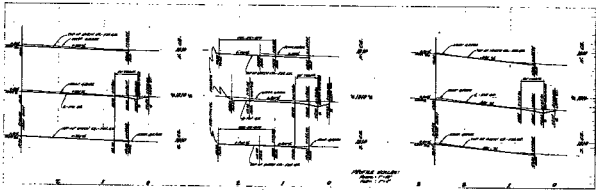
VENUS CIR.
(0.42' CROWN)

- CONSTRUCTION NOTES:
- ① CONST. 4" CONC. SIDEWALK WITH 5" TYPE II BASE AS PER DET. ON SHT. No. 1.
 - ② CONST. TYPE "L" CURB & GUTTER AS PER DET. ON SHT. No. 1.
 - ③ CONST. 2" ASPH. CONC. OVER 4" TYPE II GRAVEL BASE OVER 12" TYPE I GRAVEL BASE AS PER DET. ON SHT. No. 1.

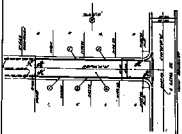


BRADY AVE.
(0.42' CROWN)

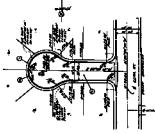
Submitted by <i>Victor G. Kraemer</i> Approved by <i>Victor G. Kraemer</i> Field Eng. <i>Victor G. Kraemer</i> City Engineer R.C.E. 396	COLLEGE PARK N^o24 STREET PLANS	Sheet 7 of 13
Voorheis-Teindle Co of Nev 1128 Fremont Las Vegas, Nev Dr L.E. Des R.P.		Date 2/2/63



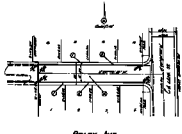
STREET WIDTH
 10' 0" 12' 0" 14' 0"



TERESA AVE.
 (PLAN VIEW)



VERBIS CIR.
 (PLAN VIEW)



BRADY AVE.
 (PLAN VIEW)

CONSTRUCTION NOTES:
 1. 4" DIA. WATER MAIN 12" DEEP AT 10' INTERVALS ALONG THE
 2. 6" DIA. GAS MAIN 12" DEEP AT 10' INTERVALS ALONG THE
 3. 8" DIA. SANITARY MAIN 12" DEEP AT 10' INTERVALS ALONG THE

	COLLEGE PARK AREA STREET PLANS		7
	Prepared by the College Park Area Planning Board in 1964		