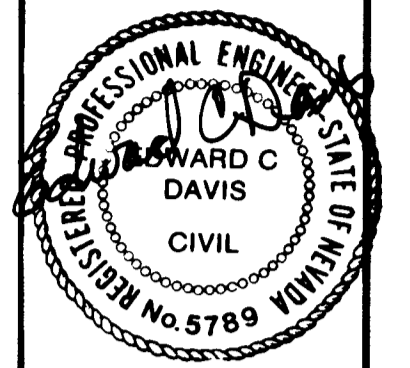


CURVE TABLE				
NO.	DELTA	R	L	T
9	90-00-00	20.00'	31.42'	20.00'
10	91-26-41	20.00'	31.92'	20.51'
11	88-33-19	20.00'	30.91'	19.50'
15	48-36-42	20.00'	16.97'	9.03'
16	138-36-43	40.50'	97.98'	107.21'

REVISIONS		
NO.	DESCRIPTION/DATE	BY
1	GRADING	ED



9-26-84

SPARKS, NEVADA  
LAS VEGAS, NEVADA  
SEATTLE, WASHINGTON

incorporated

ENGINEERS/PLANNERS

CONCORD VILLAGE DR. - PLUMAS CT. - RIDGEFIELD CT.

**CONCORD VILLAGE SUBDIVISION**

PHASE 1

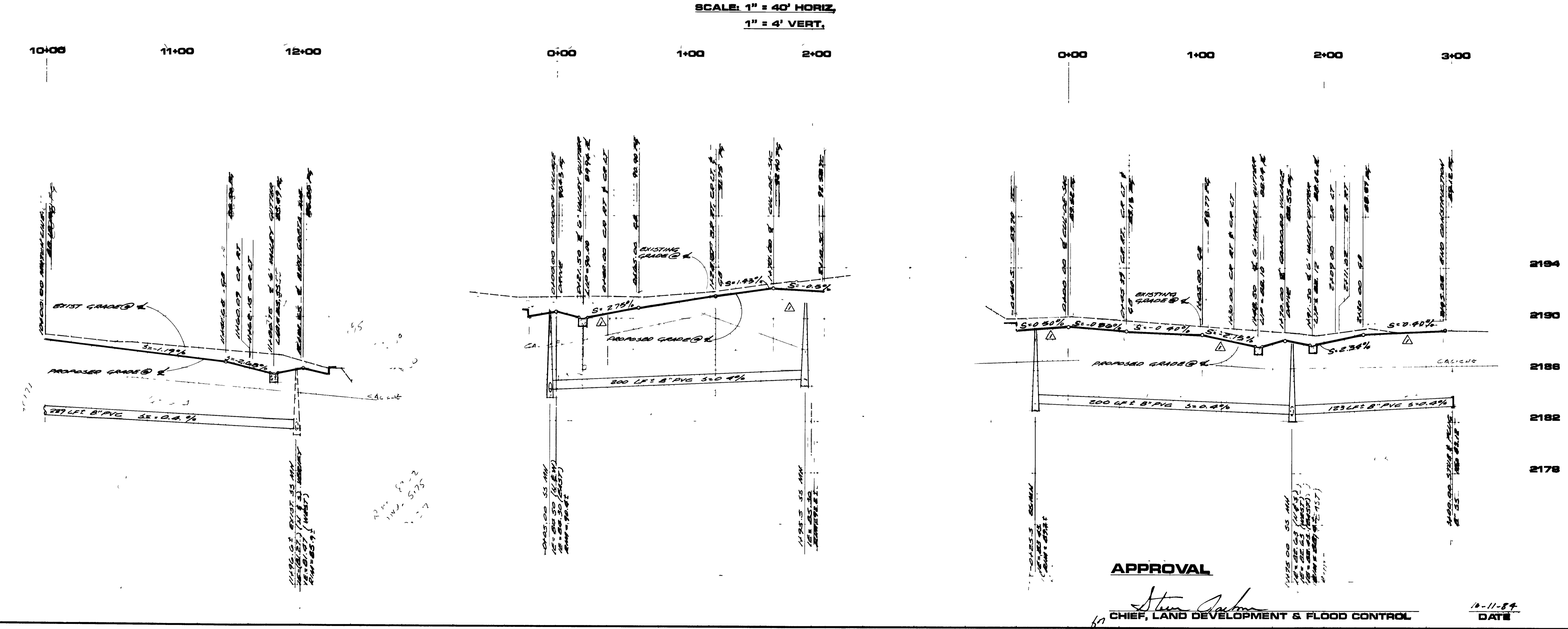
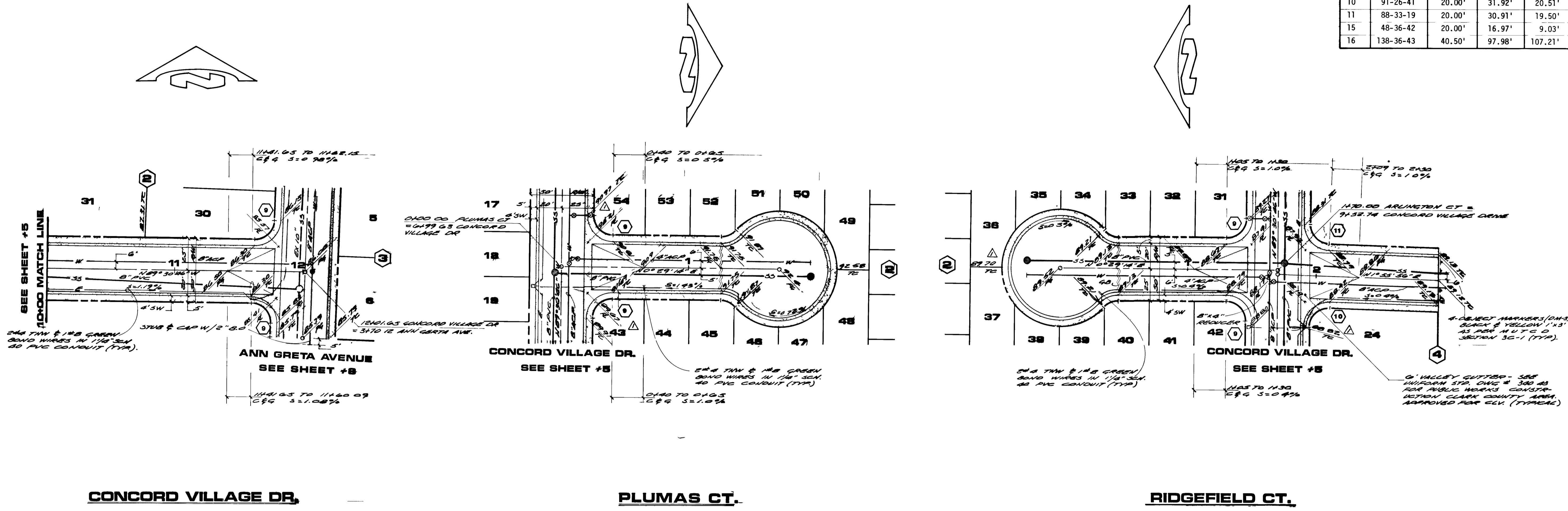
A PORTION OF THE NW1/4 OF SECTION 19, T20S, R61E, MDM

LAS VEGAS  
CLARK COUNTY

JOB NO. 2-293-002-841
DESIGNED TM
DRAWN TM
COMP. ED
CHECKED ED
DATE AUGUST, 1984

6

6 of 11 SHEETS



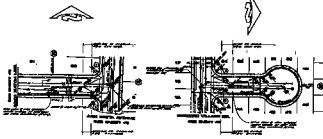
NO.	DATE	BY	REVISION
1			
2			
3			
4			
5			
6			
7			
8			
9			
10			

DATE	BY	REVISION

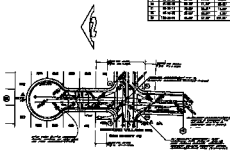


STATE OF NEW YORK  
 SEALS AND STAMPS  
 OFFICE OF THE ENGINEER  
 120 NASSAU ST., NEW YORK 38, N.Y.

CONCORD VILLAGE SUB. - PARSONS ST. - BIRMINGHAM CT.  
 CONCORD VILLAGE SUBDIVISION  
 PART 1  
 A PART OF THE MAP OF THE CONCORD VILLAGE SUBDIVISION  
 AS SHOWN ON MAP NO. 100



CONCORD VILLAGE SUB.



BIRMINGHAM CT.

CLIMAX CT.  
 PART 1 OF 2  
 S.W. 1/4 100

