

3550 PZ WATER QUANTITIES (PUBLIC)

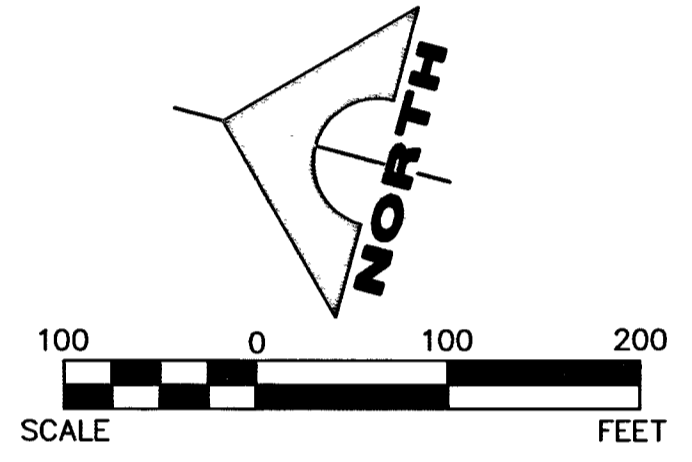
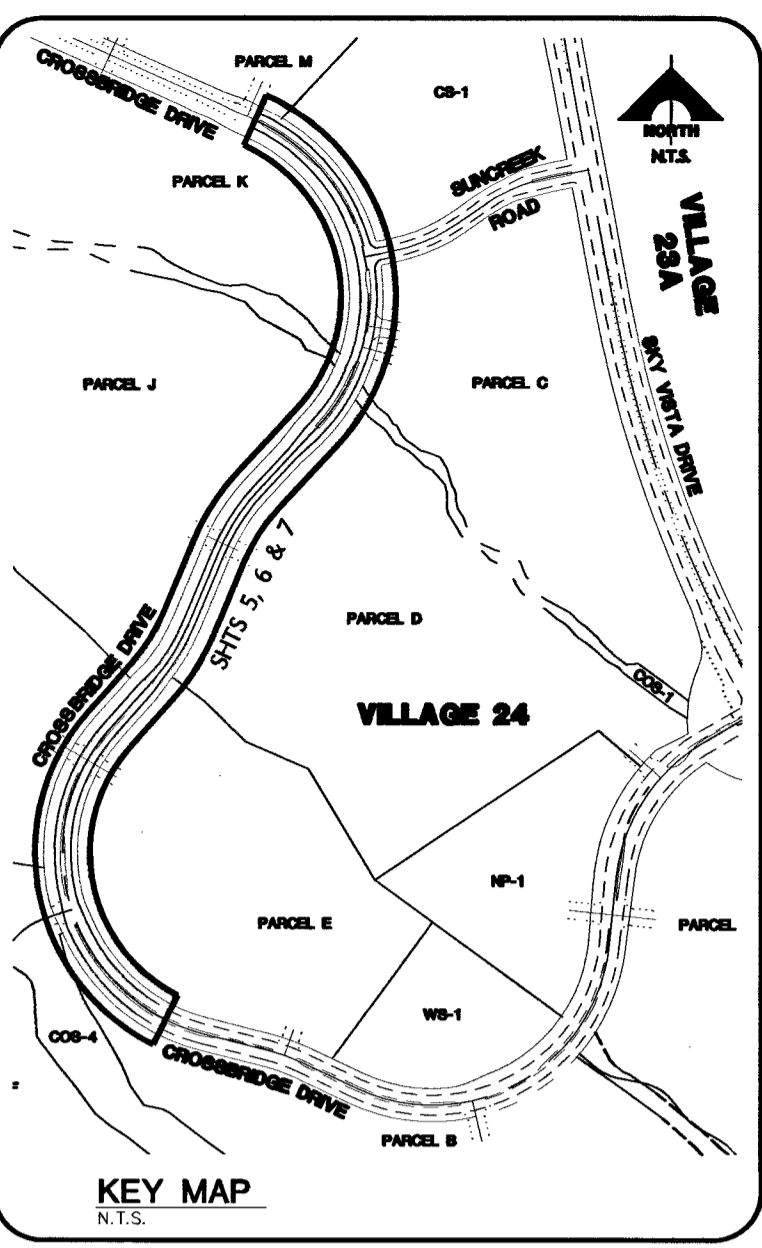
6" PVC WATER	176 LF
FIRE HYDRANT	4 EA
FIRE HYDRANT ASSEMBLY	4 EA
12" DIP WATER	3,352 LF
6" GATE VALVE	1 EA
12" GATE VALVE	11 EA
12"x6" TEE	1 EA
12"x12" TEE	1 EA
16"x12" REDUCER	1 EA
6" 90° BEND	1 EA
12" 11-1/4" BEND	1 EA
12" 45° BEND	2 EA
12" 45° BEND (VERT.)	4 EA
24" CASING	24 LF
1 1/2" IRRIGATION METER W/1 1/2" RPPA	4 EA

QUANTITIES ARE ESTIMATED ONLY. CONTRACTOR IS TO VERIFY DURING BIDDING PROCESS.

3665 PZ WATER QUANTITIES (PUBLIC)

6" PVC WATER	77 LF
FIRE HYDRANT	4 EA
FIRE HYDRANT ASSEMBLY	4 EA
12" PVC WATER	229 LF
16" DIP WATER (FULLY-RESTRAINED)	3,387 LF
6" GATE VALVE	1 EA
12" GATE VALVE	3 EA
16" GATE VALVE	5 EA
12" CAP W/2" BLOWOFF	3 EA
16" CAP W/2" BLOWOFF	3 EA
16"x6" TEE	1 EA
16"x12" TEE	3 EA
6" 90° BEND	1 EA
16" 11-1/4" BEND	1 EA
16" 22-1/2" BEND	1 EA
16" 45° BEND	1 EA
16" 90° BEND	1 EA
16" 45° BEND (VERT.)	4 EA
24" CASING	33 LF
4" COMBINATION AIR VALVE ASSEMBLY	5 EA
6" MANUAL BLOW OFF ASSEMBLY	1 EA
1 1/2" IRRIGATION METER W/1 1/2" RPPA	2 EA

QUANTITIES ARE ESTIMATED ONLY. CONTRACTOR IS TO VERIFY DURING BIDDING PROCESS.



NOTE
THIS SET OF DRAWINGS IS BASED UPON NAVD 88 DATUM. PREVIOUS DRAWINGS MAY BE BASED ON OTHER DATUM. CARE SHOULD BE OBSERVED WHEN UTILIZING THIS SET OF DRAWINGS

BASIS OF BEARINGS
SOUTH 89°47'23" EAST, BEING THE BEARING OF THE NORTH LINE OF SECTION 33, TOWNSHIP 20 SOUTH, RANGE 59 EAST, W.D.M., CITY OF LAS VEGAS, CLARK COUNTY, NEVADA AS SHOWN IN FILE 118, PAGE 100 OF PARCEL MAPS ON FILE AT THE CLARK COUNTY, NEVADA RECORDER'S OFFICE.

BENCHMARK

BM #	DESCRIPTION	NAVD 88 DATUM (FEET)	NAVD 88 DATUM (METERS)
CLV BM No. D368	U.S.C. & G.S. DISC SET IN ROCK RIDGE 150' SOUTH OF CHARLESTON BLVD & WEST OF DETENTION BASIN.	3246.63	989.574

NOTE
ADJUST WATER VALVE BOX TO FINISHED GRADE PER UDACS PLATE 39. VALVE SHALL BE ACCESSIBLE AT ALL TIMES. ALSO ADJUST ALL MANHOLES, AIR-VACS, AND BLOW OFFS TO FINISH GRADE AS NECESSARY

Call before you Dig
1-800-227-2600
CLARK COUNTY PUBLIC UTILITIES
1-702-455-6000

Call before you Overhead
1-702-227-2929

FAST
1-702-432-5300
FREIGHT AND AVIATION SYSTEMS OF TRANSPORTATION

FOR EX. IMPROVEMENTS, SEE VILLAGE 24 UNIT 1 IMPROVEMENTS BY G. C. WALLACE, INC. JOB # 62A.24.211 CITY OF LAS VEGAS # 107-Y4932

APPROVED FOR CONSTRUCTION
CITY OF LAS VEGAS FIRE DEPARTMENT
DATE: 10/19/16

APPROVED FOR CONSTRUCTION 1ST APP'D 12/23/15
LAS VEGAS VALLEY WATER DISTRICT ENGINEERING SERVICES MANAGER
PROJECT NO. 123547 DATE: 10/20/16

THE HOWARD HUGHES COMPANY, LLC
VILLAGE 24 - CROSSBRIDGE DRIVE UNIT 2
IMPROVEMENT PLANS
MASTER UTILITY PLAN - WATER

PROJECT NO. 62024-222
DESIGN: GCW
DRAWING: GCW
CHECK: JJJ
PLOT DATE: 10-13-16
PLOT TIME: 14:45:12

G. C. WALLACE COMPANIES
ENGINEERS | PLANNERS | SURVEYORS
17028 W. LAS VEGAS BLVD. SUITE 200
LAS VEGAS, NV 89140
TEL: 702.884.2800 FAX: 702.884.2279 GCW@WALLACE.COM

REVISIONS:
10/05/16 REVISED WATER PROFILE, REMOVED AVAC AND BLOWOFF
09/17/16 ADDED METERS & IRRIGATION SLEEVES, REVISED SWEET MANHOLES
08/07/16 DELETED 50' SLEEVES IN PARCEL I
07/22/16 SPLIT CONSTRUCTION OF WATER MAINS INTO PHASES

DATE: 10/19/2016

DRAWING 187W 6535
HW 12305
5 OF 53 SHTS

SD NO. 812 PROJECT 9A, 9B AND 10A
PROJ.#:123547 AGR#: 115478 QS:137-33-SE XC 11081