

| DATE | AGENCY | APP | DATE | AGENCY | APP |
|------|--------|-----|------|--------|-----|
|      |        |     |      |        |     |

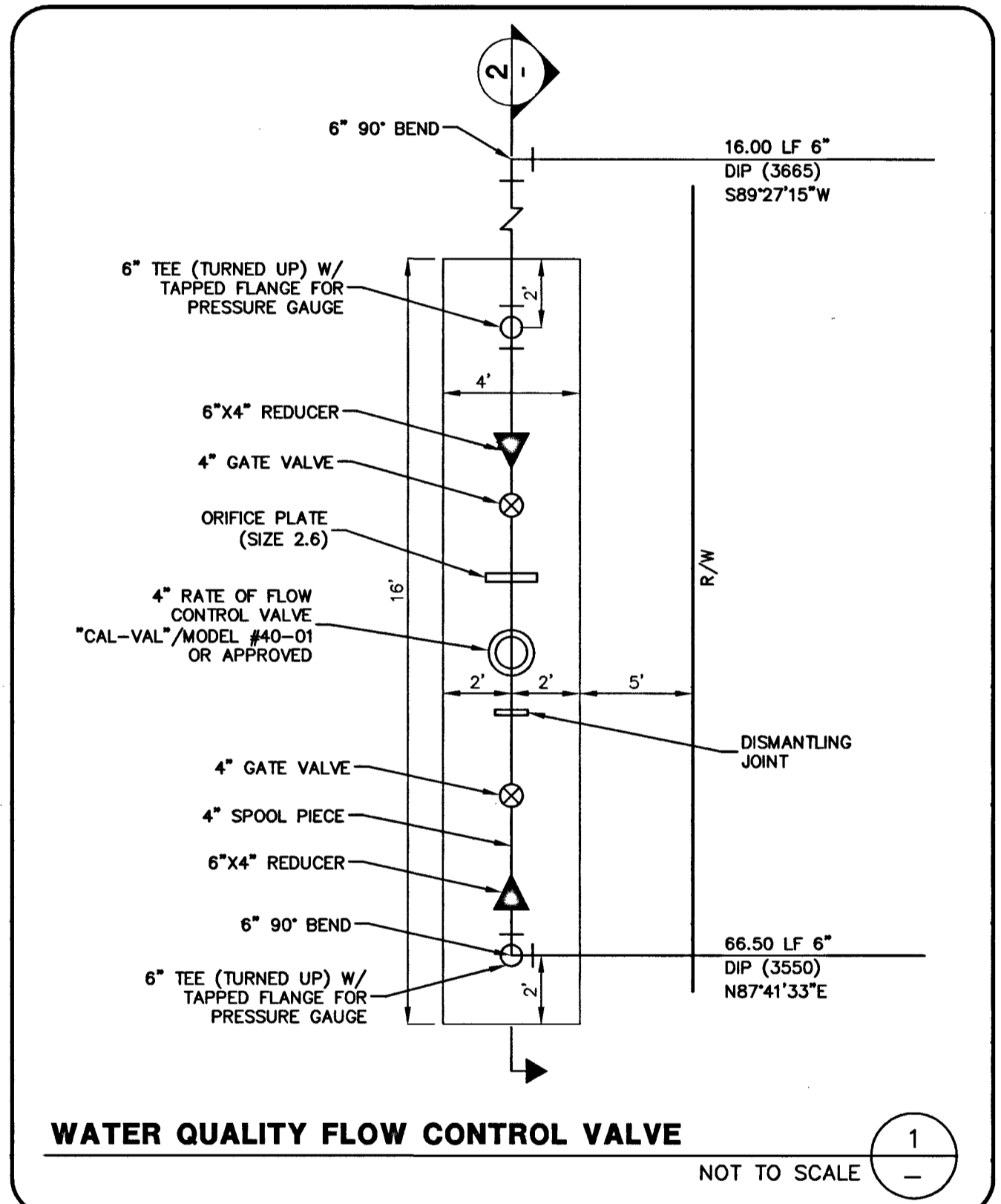
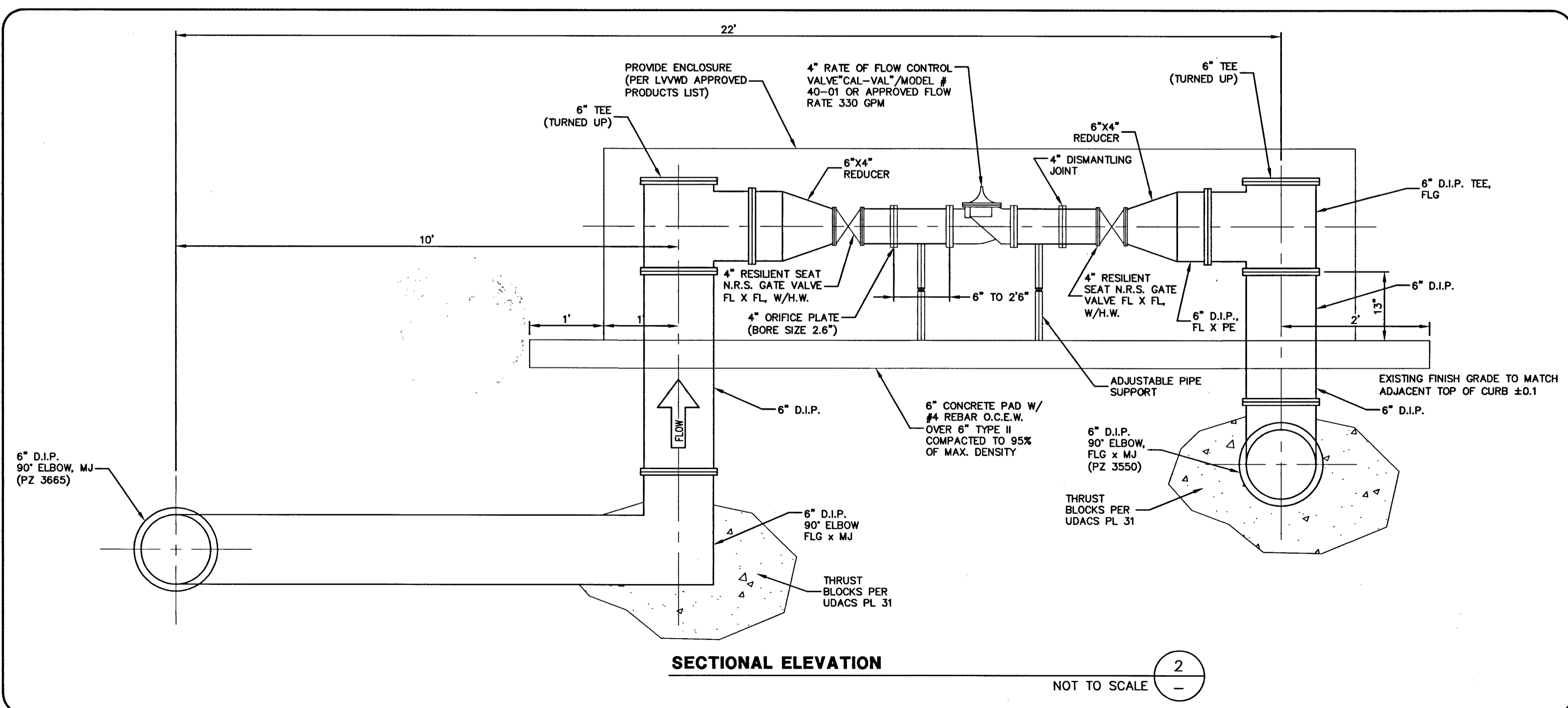
| REV | DATE | DESCRIPTION |
|-----|------|-------------|
|     |      |             |

|             |           |
|-------------|-----------|
| PROJECT NO. | 62024-222 |
| DESIGN      | GCW       |
| DRAWN       | GCW       |
| CHECK       | JLJ       |
| PLOT DATE   | 12-21-15  |
| PLOT TIME   | 10:57:04  |

PROJECT NO. 62024-222  
 DESIGN: GCW  
 DRAWN: GCW  
 CHECK: JLJ  
 PLOT DATE: 12-21-15  
 PLOT TIME: 10:57:04

**G.C. WALLACE COMPANIES**  
 ENGINEERS | PLANNERS | SURVEYORS  
 1555 S. RAINBOW BLVD. LAS VEGAS, NV 89146  
 T: 702.804.2000 F: 702.804.2599 GCWALLACE.COM  
 LAS VEGAS  
 F:\Projects\62024-222\DWG\Production\24GB2453\_FCVD.dwg  
 Paul Bremner

**THE HOWARD HUGHES COMPANY, LLC**  
 VILLAGE 24 - CROSSBRIDGE DRIVE UNIT 2  
 IMPROVEMENT PLANS  
**FLOW CONTROL VALVE DETAILS**  
 DRAWING #463303  
 10716535  
 53  
 53 OF 53 SHEETS



| MATERIALS LIST        |                    |
|-----------------------|--------------------|
| DESCRIPTION           | DEDICATED QUANTITY |
| 4" RATE CONTROL VALVE | 1 EA               |
| 4" TURBINE METER      | 1 EA               |
| 6"x6" TEE             | 2 EA               |
| 6" DIP 90° BEND       | 3 EA               |
| 6"x4" REDUCER         | 2 EA               |
| 4" GATE VALVE         | 2 EA               |

- NOTES:**
- FOR ALL MATERIALS NOT ON THE APPROVED PRODUCTS LIST, SHOP DRAWINGS FOR ALL POLYVINYL CHLORIDE PRESSURE PIPE (CPVC), FITTINGS, ACCESSORIES, AND APPURTENANCES SHALL BE SUBMITTED TO THE LVWD, ENGINEERING SERVICES DIVISION, FOR REVIEW AND APPROVAL.
  - METERS MUST BE SET IN A HORIZONTAL POSITION. AT LEAST EIGHT (8) DIAMETERS OF STRAIGHT PIPE ARE REQUIRED AT THE INLET END.
  - ADJUST SIZE OF PAD TO ACCOMMODATE THE ENCLOSURE. PAD TO EXTEND 1' BEYOND ON ALL SIDES.

APPROVED FOR CONSTRUCTION  
*H. D. SHARI FOR DM*  
 LAS VEGAS VALLEY WATER DISTRICT ENGINEERING SERVICES BRANCH  
 PROJECT NO. 123547 DATE: 12/23/15

62024-222.dwg (12/23/15).pwr

SD NO. 812 PROJECT 9A, 9B AND 10A