

NOTE
THIS SET OF DRAWINGS IS BASED UPON NAVD 88 DATUM. PREVIOUS DRAWINGS MAY BE BASED ON OTHER DATUM. CARE SHOULD BE OBSERVED WHEN UTILIZING THIS SET OF DRAWINGS

BASIS OF BEARINGS
SOUTH 89°47'23" EAST, BEING THE BEARING OF THE NORTH LINE OF SECTION 33, TOWNSHIP 20 SOUTH, RANGE 59 EAST, M.D.M., CITY OF LAS VEGAS, CLARK COUNTY, NEVADA, AS SHOWN IN FILE 118, PAGE 100 OF PARCEL MAPS ON FILE AT THE CLARK COUNTY, NEVADA RECORDER'S OFFICE.

BENCHMARK

BM #	DESCRIPTION	NAVD 88 DATUM (FEET)	NAVD 88 DATUM (METERS)
CLV BM No. D368	U.S.C. & G.S. DISC SET IN ROCK RIDGE 150' SOUTH OF CHARLESTON BLVD & WEST OF DETENTION BASIN.	3246.63	989.574

Call before you Dig
Call 1-800-227-2800
CLARK COUNTY PUBLIC UTILITIES DEPARTMENT
1-702-455-6000

CALL BEFORE YOU DIG
UNDERGROUND UTILITY LOCATING SERVICE
1-702-227-2929

FAST
Call before you dig
1-702-432-5300
FREIGHTWAY AND AIRPORT SYSTEMS OF TRANSPORTATION

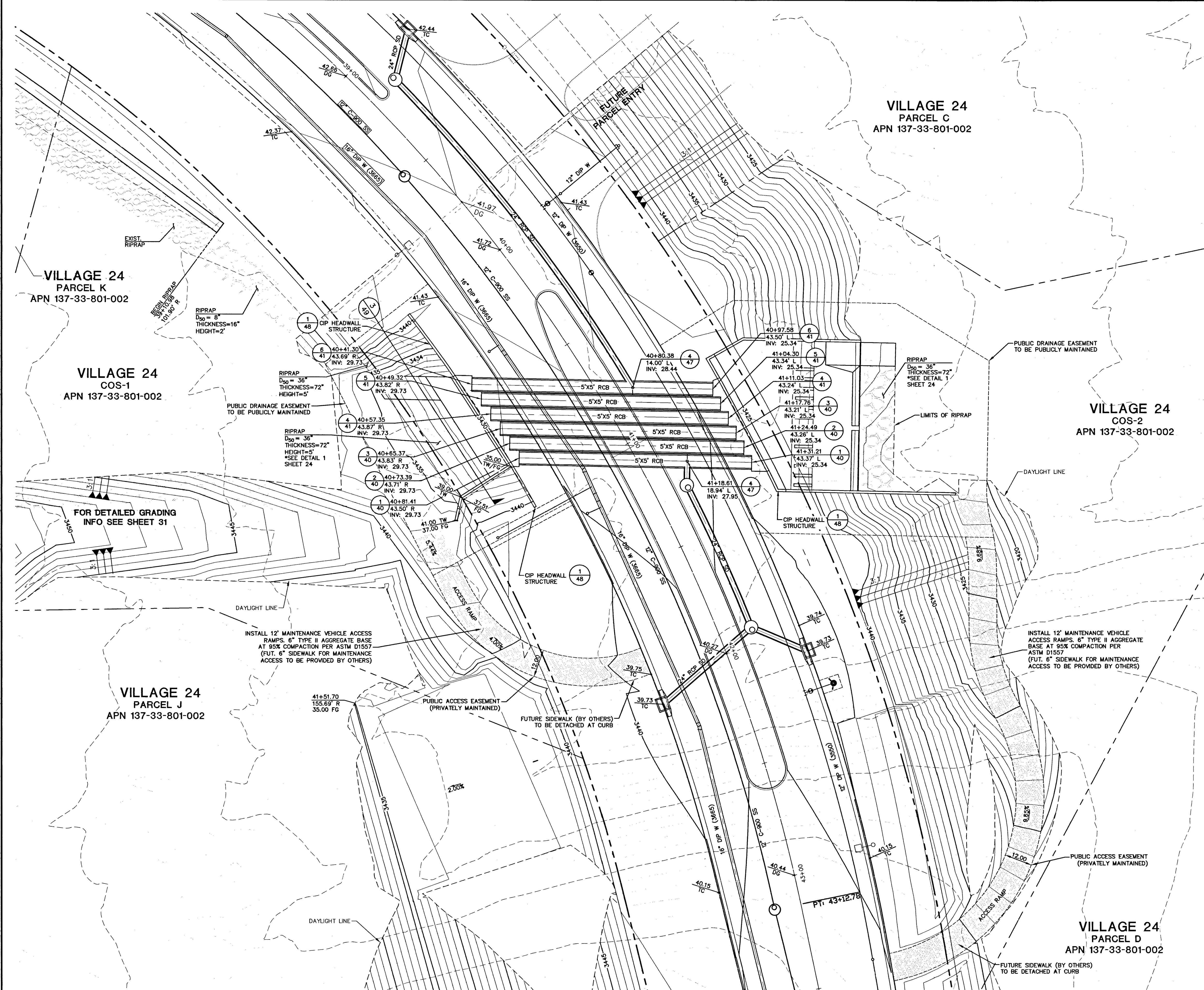
PROJECT NO.	DESIGN:	DRAWN:	CHECK:	PLOT DATE:	REV	DATE	DESCRIPTION
62024-222	GCW	GCW	LLJ	12-09-15			
				20-12-15			
				02-02-16			

G. C. WALLACE COMPANIES
ENGINEERS | PLANNERS | SURVEYORS
1555 S. RAINBOW BLVD. LAS VEGAS, NV 89146
T: 702.894.2000 F: 702.894.2299 GCW@GWC.COM

THE HOWARD HUGHES COMPANY, LLC
VILLAGE 24 - CROSSBRIDGE DRIVE UNIT 2
IMPROVEMENT PLANS
CROSSBRIDGE DRIVE
GRADING AT DRAINAGE CORRIDOR CROSSING

DRAWING
H443073
167V4535
24
24 OF 53 SHEETS

SCALE: HORIZ. 1" = 20'



CROSSBRIDGE DRIVE (PUBLIC) - DRAINAGE CORRIDOR CROSSING

SCALE: HORIZ. 1" = 20'

GCW 24-222.dwg 07/02/2015

SHEET NO. 812 PROJECT 9A, 9B AND 10A