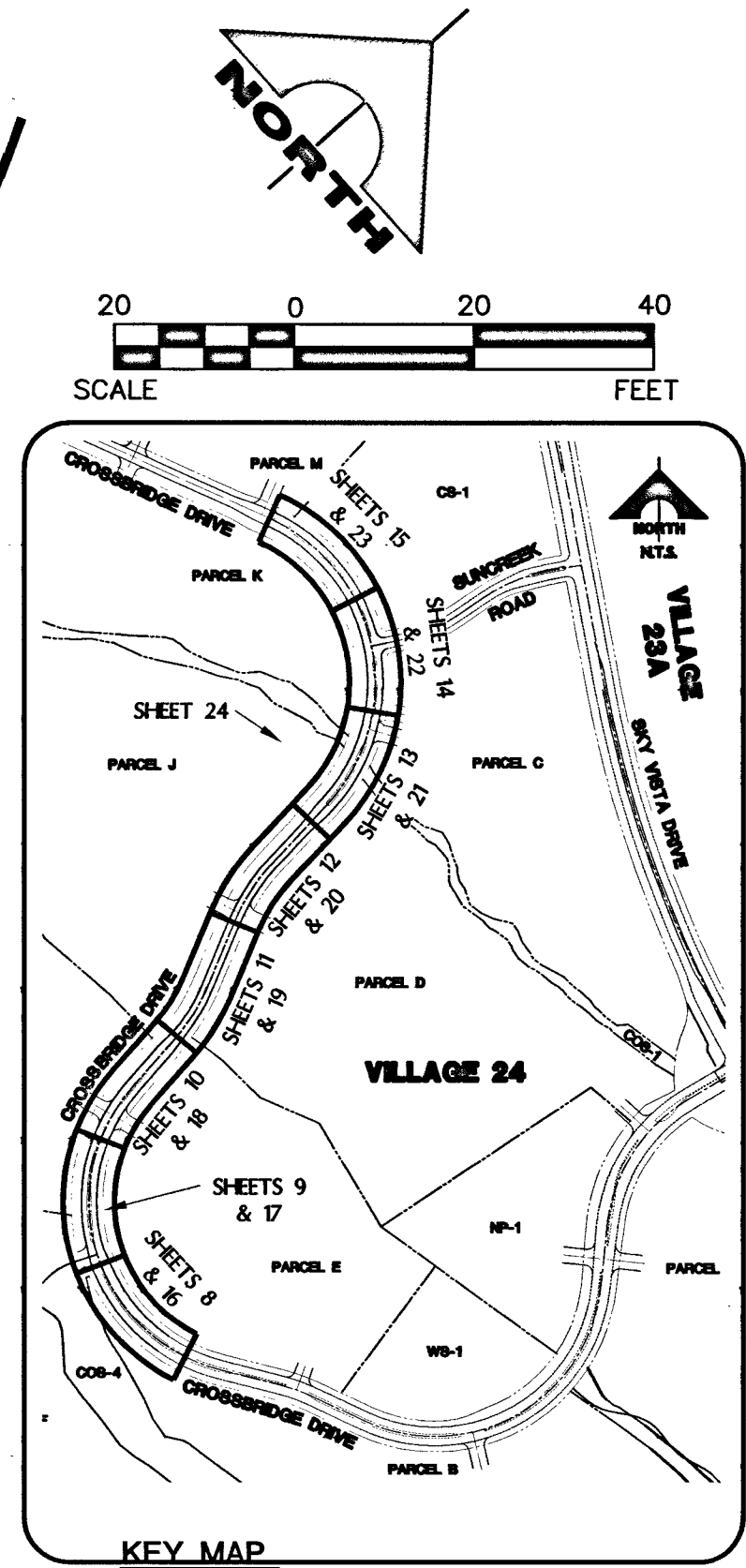
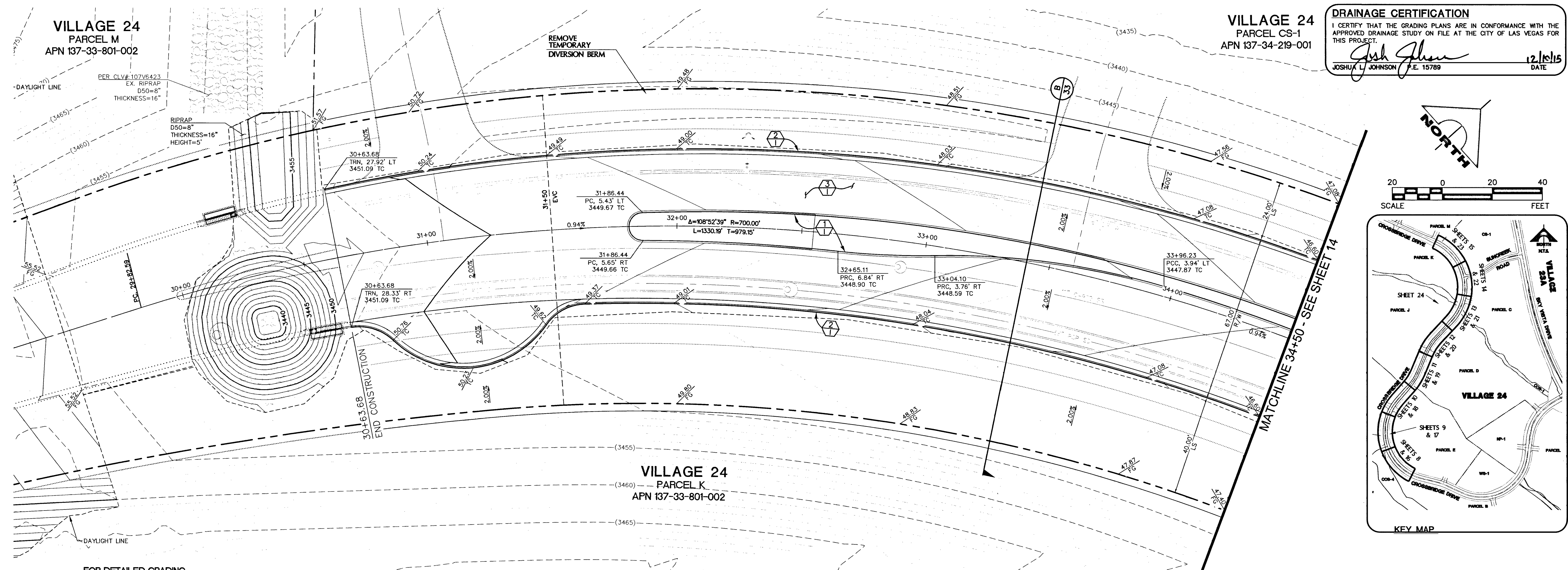
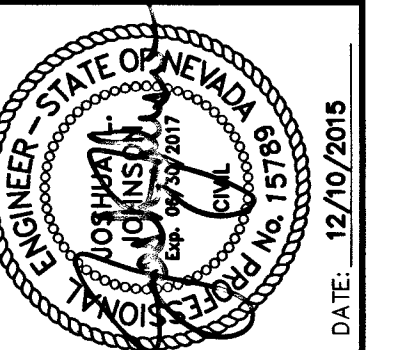


VILLAGE 24  
PARCEL M  
APN 137-33-801-002

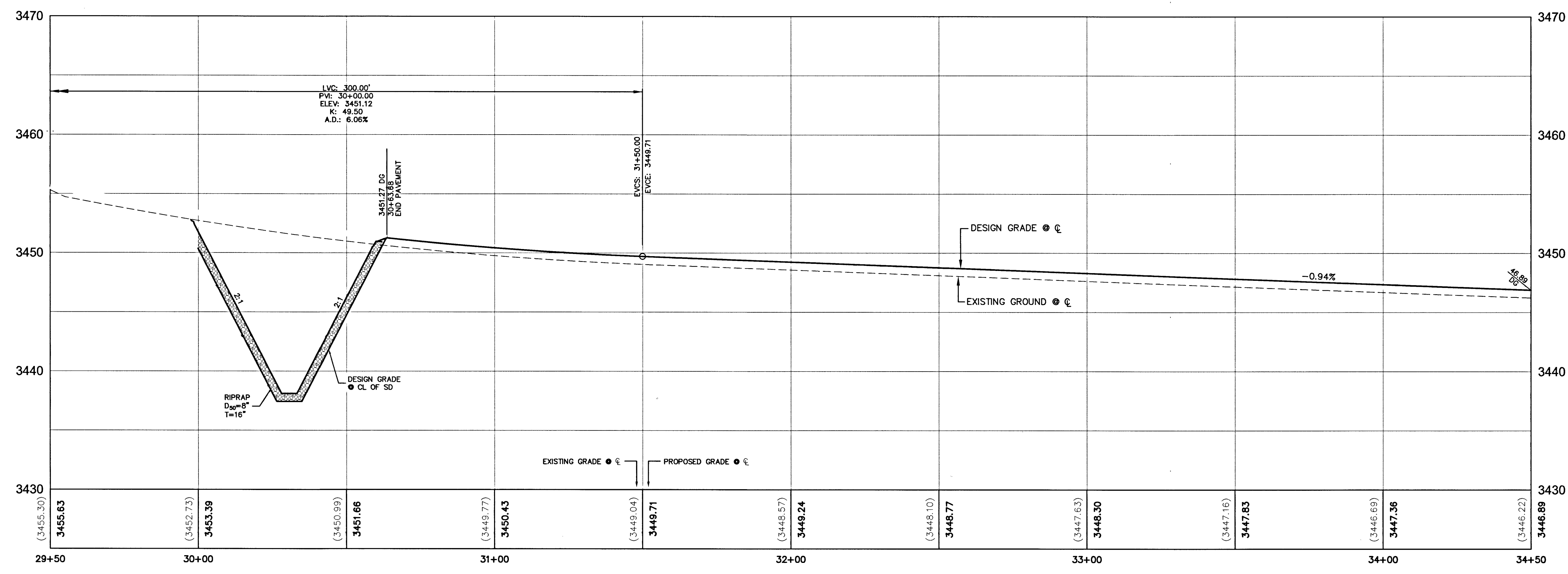
VILLAGE 24  
PARCEL CS-1  
APN 137-34-219-001

**DRAINAGE CERTIFICATION**  
I CERTIFY THAT THE GRADING PLANS ARE IN CONFORMANCE WITH THE APPROVED DRAINAGE STUDY ON FILE AT THE CITY OF LAS VEGAS FOR THIS PROJECT.  
*Josh Johnson*  
JOSHUA L. JOHNSON P.E. 15789  
12/10/15  
DATE



**CROSSBRIDGE DRIVE (PUBLIC)**

SCALE: HORIZ 1" = 20'  
VERT. 1" = 5'



**FAST**  
Call before you UnderGround  
1-702-432-5300  
PREWAY AND MATERIAL SYSTEM OF TRANSPORTATION

Call before you Dig  
Avoid cutting underground utility lines. It's costly.  
Call  
1-800-227-2600  
CLARK COUNTY PUBLIC OPERATIONS  
1-702-455-6000

CALL BEFORE YOU DIG OVERHEAD  
AHEAD OF THE OVERHEAD POWER LINES. IT'S COSTLY!  
1-702-227-2929

**NOTE**  
THIS SET OF DRAWINGS IS BASED UPON NAVD 88 DATUM. PREVIOUS DRAWINGS MAY BE BASED ON OTHER DATUM. CARE SHOULD BE OBSERVED WHEN UTILIZING THIS SET OF DRAWINGS

**BASIS OF BEARINGS**  
SOUTH 89°47'23" EAST, BEING THE BEARING OF THE NORTH LINE OF SECTION 33, TOWNSHIP 20 SOUTH, RANGE 59 EAST, M.D.M., CITY OF LAS VEGAS, CLARK COUNTY, NEVADA, AS SHOWN IN FILE 118, PAGE 100 OF PARCEL MAPS ON FILE AT THE CLARK COUNTY, NEVADA RECORDER'S OFFICE.

BENCHMARK			
BM #	DESCRIPTION	NAVD 88 DATUM (FEET)	NAVD 88 DATUM (METERS)
CLV BM No. D368	U.S.C. & G.S. DISC SET IN ROCK RIDGE 150' SOUTH OF CHARLESTON BLVD & WEST OF DETENTION BASIN.	3246.63	989.574

PROJECT NO. 62024-222  
DESIGN: GCW  
DRAWN: GCW  
CHECK: JJJ  
PLOT DATE: 12-10-15  
PLOT TIME: 09:42:16

**G. C. WALLACE COMPANIES**  
ENGINEERS | PLANNERS | SURVEYORS  
1555 S. BAINBRIDGE BLVD. • LAS VEGAS, NV 89146  
T: 702.894.2000 • F: 702.894.2299 • GCWALLACE.COM  
LAS VEGAS

THE HOWARD HUGHES COMPANY, LLC  
VILLAGE 24 - CROSSBRIDGE DRIVE UNIT 2  
IMPROVEMENT PLANS  
CROSSBRIDGE DRIVE  
ROADWAY PLAN AND PROFILE 8

DRAWING 15  
10714535  
15 OF 53 SHTS

SID NO. 812 PROJECT 9A, 9B AND 10A