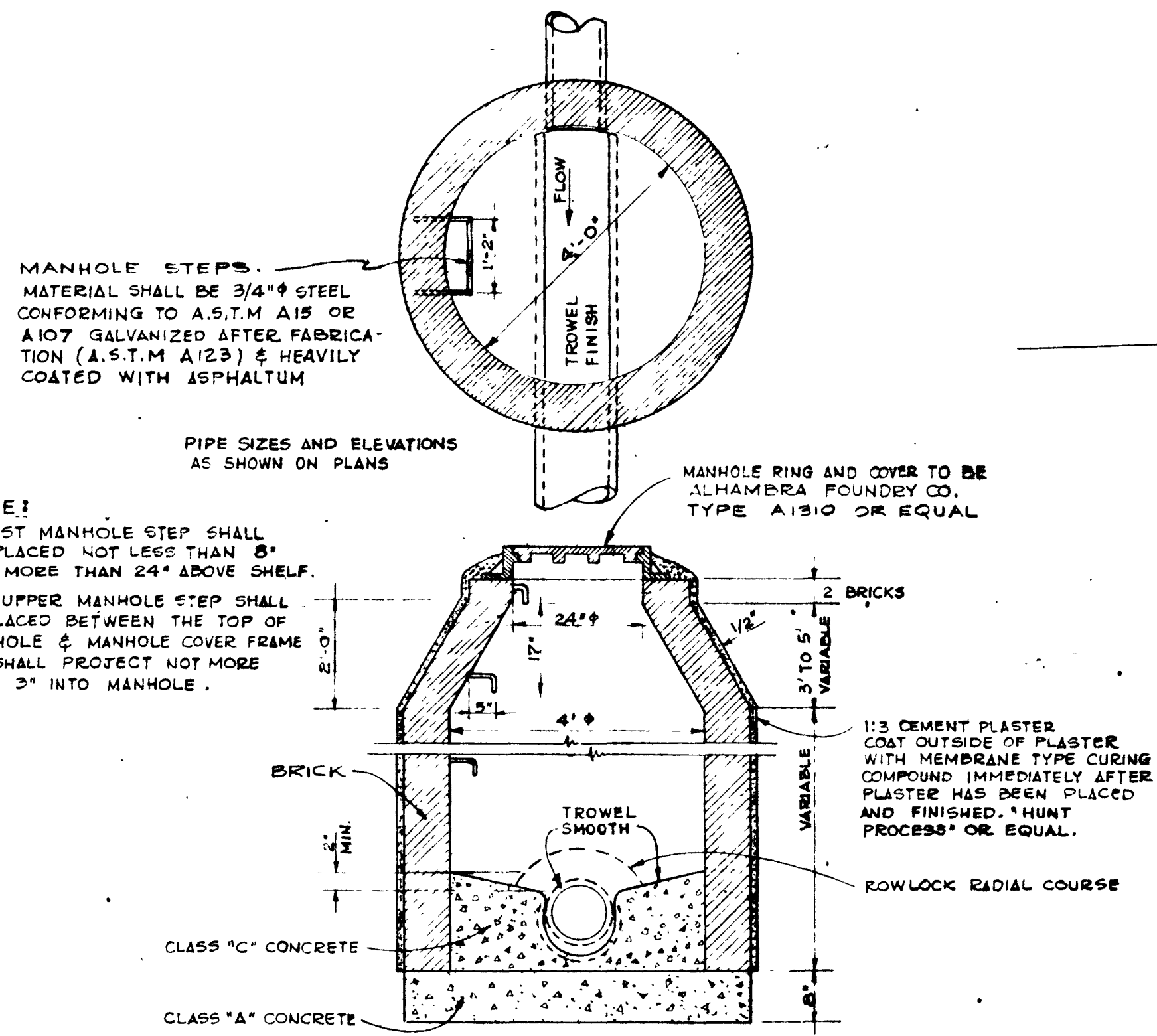
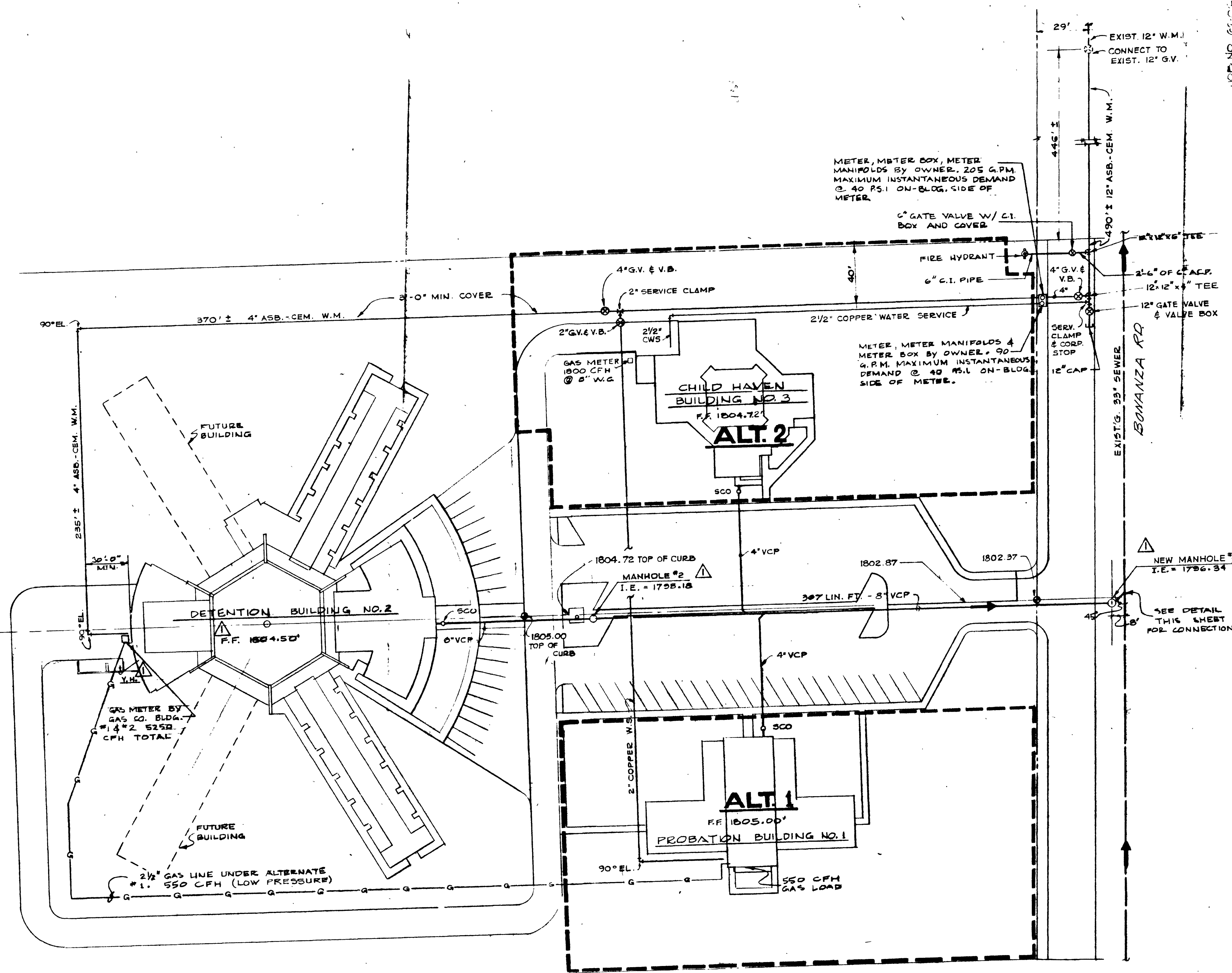


PLUMBING SYMBOL SCHEDULE	
PIPING	ROOF DRAIN
SOIL, WASTE OR LEADER - ABOVE GRADE	SINK
SOIL, WASTE OR LEADER - BELOW GRADE	SHOCK ABSORBER
VENT	SURFACE CLEANOUT
COLD WATER	SHOWER
HOT WATER	SS SERVICE SINK
HOT WATER RETURN	UR URINAL
GAS	VTR VENT THRU ROOF
ACID WASTE	VCP VITRIFIED CLAY PIPE
COMPRESSED AIR	WC WATER CLOSET
VACUUM LINE	WCO WALL CLEAN OUT
CHILLED DRINKING WATER SUPPLY	WM WASHING MACHINE
CHILLED DRINKING WATER RETURN	
FIRE LINE	FITTINGS
WSP WET STANDPIPE	ELBOW, DOWN
DSP DRY STANDPIPE	ELBOW, UP
OX OXYGEN	REDUCER, CONCENTRIC
HPS HIGH PRESSURE STEAM SUPPLY	REDUCER, ECCENTRIC
HPR HIGH PRESSURE STEAM RETURN	TEE, OUTLET DOWN
LPS LOW PRESSURE STEAM SUPPLY	TEE, OUTLET UP
LPR LOW PRESSURE STEAM RETURN	UNION
CPD CONDENSATE PUMP DISCHARGE	VALVES
FWD FEEDWATER PUMP DISCHARGE	GATE
	GLOBE
	CHECK
AD AREA DRAIN	ANGLE GATE, ELEVATION
ACP ASBESTOS CEMENT PIPE	ANGLE GATE, PLAN
BT BATHTUB	PLUS
CI CAST IRON	MOTOR OPERATED
CO CLEANOUT	PNEUMATIC OPERATED
CO2 CO2 EXTINGUISHER	PRESSURE REDUCING
CU COPPER	RELIEF
DF DRINKING FOUNTAIN	THREE WAY
DW DISHWASHER	HOSE BIBB
DSP DISPOSAL	MISCELLANEOUS
EDF ELECTRIC DRINKING FOUNTAIN	STRAINER
FCO FLOOR CLEAN OUT	VACUUM BREAKER
FD FLOOR DRAIN	
FHC FIRE HOSE CABINET	PRESSURE GAUGE
FS FLOOR SINK	THERMOMETER
GT GREASE TRAP	PIPE ANCHOR
HB HOSE BIBB	EXPANSION LOOP
ID INDIRECT WASTE	EXPANSION JOINT
LAV LAVATORY	SHOCK ABSORBER

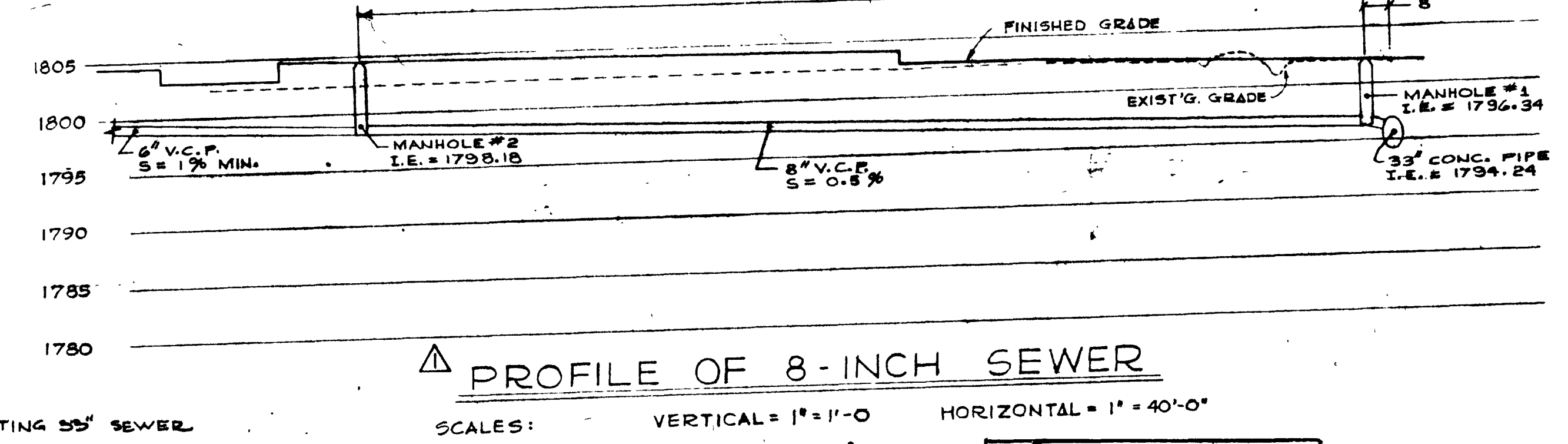
- NOTES:
- SEWER: UNDER BASE BID BUILDING #2, INCLUDING SEWER TO MAIN IN STREET AND MANHOLES, ALSO EXTEND 4" LINES TO WITHIN 5' OF BUILDINGS #1 AND #3 AND CAP.
 - WATER: UNDER BASE BID METER BOX AND 4" WATER LINE SERVING BUILDING #2 AND EXTENDED TO WITHIN 5' OF BUILDING #1 AND CAPED. BUILDING #3 TO BE ON SEPARATE WATER METER AND WATER LINE COVERED UNDER ALTERNATE 2.
 - GAS: UNDER BASE BID GAS LINE FROM METER IN REAR OF BUILDING #2. UNDER ALTERNATE 1 RUN 2 1/2" GAS LINE FROM ABOVE METER TO BUILDING #1. BUILDING #3 TO HAVE SEPARATE GAS METER UNDER ALTERNATE 2.
 - PLUMBING CONTRACTOR SHALL VERIFY LOCATION OF AND DISTANCE TO EXISTING WATER AND SEWER LINES.
 - WATER MAIN EXTENSION PIPING & VALVING SHALL CONFORM TO SPECIFICATIONS OF THE LAS VEGAS VALLEY WATER DISTRICT.
 - FIRE HYDRANTS AND PIPING SHALL CONFORM TO SPECIFICATIONS OF THE CITY OF LAS VEGAS ENGINEERING DEPT.



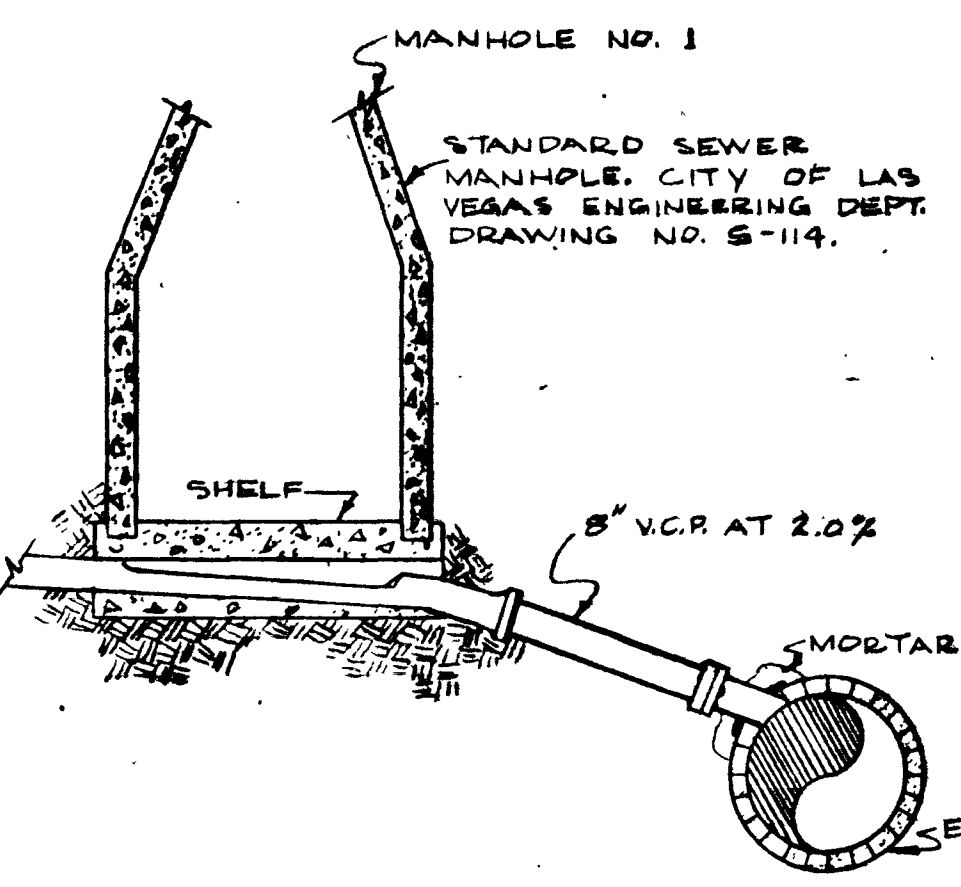
6" BUILDING CONNECTION TO 8" SEWER
DETAIL MANHOLE #2



SITE PLAN
SCALE 1" = 40'-0"



PROFILE OF 8-INCH SEWER
SCALES: VERTICAL = 1" = 1'-0" HORIZONTAL = 1" = 40'-0"



DETAIL OF CONNECTION TO 33" INTERCEPTOR ON BONANZA RD.

APPROVED BY: *R.D. Anton* 5-24-68
Supt. of Sanitation

APPROVED BY: *W. Blum*
City Engineer

ROUTE	APPROVED	DATE
3	SERVICES	<i>Rw</i> 5/24
	RIGHT OF WAY	
	CONTRACTS	
5	UTILITIES	<i>ard</i> 5/24/68
1	SUBDIVISION	<i>ard</i> 5/24/68
	TRAFFIC	
2	FIELD ENG.	<i>M.M.</i> 5/21/68
	ENGINEERING	
4	D.P.W.	<i>W.</i> 5/24/68

JACK MILLER AND ASSOCIATES AIA ARCHITECTS ENGINEERS
 THOMAS A. TURNER STRUCTURAL ENGINEER
 522 EAST TWAIN AVENUE, LEGENT 5-5222 LAS VEGAS NEVADA

CLARK COUNTY JUVENILE CENTER
 CLARK COUNTY NEVADA

SHEET NO. P1

