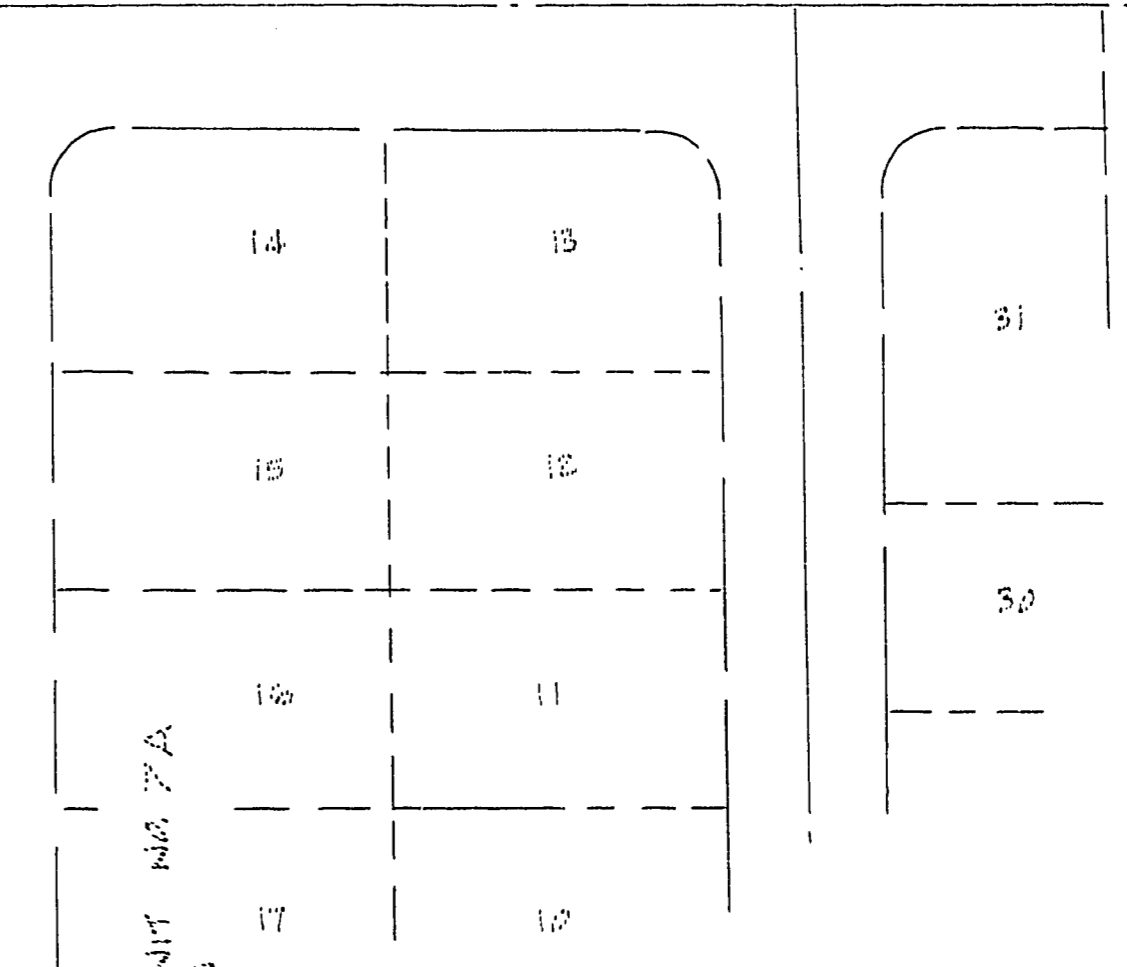
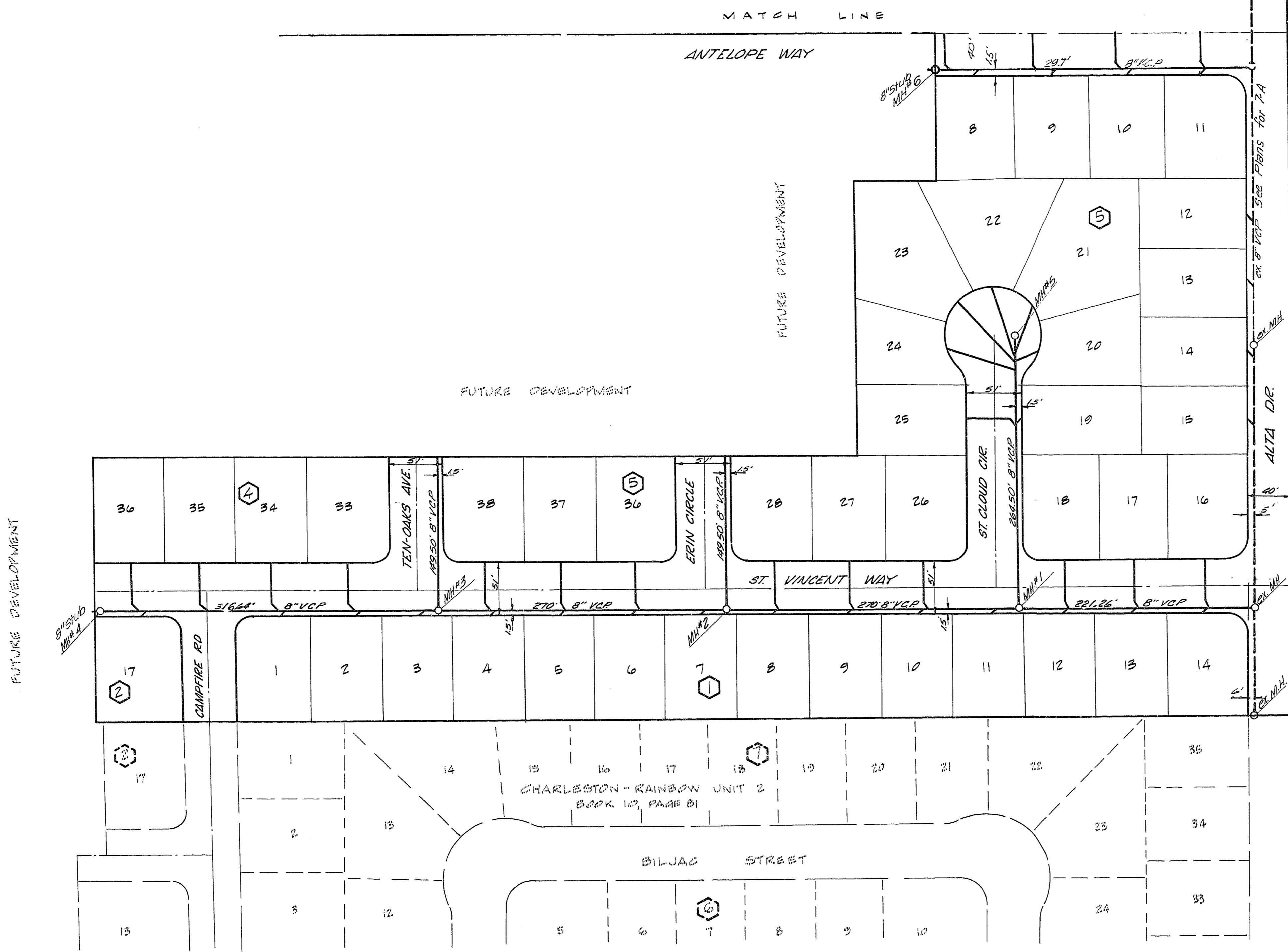


CENTER 1/4 COR. SEC. 34,
T.20S, R.00E, M.D.B.M.



SCALE: 1" = 60'

SUBMITTED BY:

Victor G. Kramerbauer 2/6/69
Victor G. Kramerbauer RCE #1511 date

APPROVALS:

City Sanitation Supt date

Ed Sawyer 6-4-69
Las Vegas City Engineer date

GENERAL NOTES:
 1) House services shall comply with the Western Plumbing Code, as to distance separations.
 2) See sheet 1 for trench details.
 3) All houses to be sewered individually as per Sec. 313 of the Uniform Plumbing Code.

ESTIMATE OF QUANTITIES	
Description	Amount
Standard Manholes	1 each
Offset Manholes	5 each
8" V.C.P.	1937 LF
4" V.C.P. Laterals	1175 LF
4" Y" Lateral connections	23 Ea

VOORHEIS-TRINDLE CO. OF NEVADA
 2209 Paradise Road Las Vegas, Nev.
MASTER SEWER PLAN
CHARLESTON - RAINBOW
UNIT 9-C.

Sheet
9
10

3074-1055-9C