

**DISCLAIMER NOTE:**

UTILITY LOCATIONS SHOWN HEREON ARE APPROXIMATE ONLY. IT SHALL BE THE CONTRACTOR'S RESPONSIBILITY TO DETERMINE THE EXACT HORIZONTAL AND VERTICAL LOCATION OF ALL EXISTING UNDERGROUND OR OVERHEAD UTILITIES PRIOR TO COMMENCING CONSTRUCTION. NO REPRESENTATION IS MADE THAT ALL EXISTING UTILITIES ARE SHOWN HEREON. THE ENGINEER ASSUMES NO RESPONSIBILITY FOR UTILITIES NOT SHOWN OR UTILITIES NOT SHOWN IN THEIR PROPER LOCATION. CONTRACTOR TO NOTIFY ENGINEER OF ANY CHANGES OR DISCREPANCIES.

Call before you Dig  
AVOID CUTTING UNDERGROUND UTILITY LINES. IT'S COSTLY.  
**Call 811**  
OR  
1-800-227-2600

**FAST**  
Call before you Underground  
1-702-432-5300  
FREEWAY AND ARTERIAL SYSTEM OF TRANSPORTATION

AVOID HITTING OVERHEAD POWER LINES. IT'S COSTLY.  
**CALL BEFORE YOU DO OVERHEAD**  
1-702-227-2929

**CONSTRUCTION NOTES**

- CONSTRUCT AC PAVEMENT PER DETAILS 1 THRU 5 ON SHEET D-1
- CONSTRUCT 30" ROLL CURB PER CCAUSD # 217.51
- CONSTRUCT CONCRETE CUT OFF WALL PER DETAIL 1 ON SHEET D-1
- CONSTRUCT 5" SIDEWALK PER CCAUSD # 234 (5-INCH THICK WHEN CONTIGUOUS TO ROLL CURB)
- SAW CUT AND MATCH EXISTING PAVEMENT. FINAL LIMITS TO BE FIELD DETERMINED BY INSPECTOR
- CONSTRUCT SIDEWALK RAMPS USING ARMOR TILE TRUNCATED DOMES OR EQUIVALENT PER CCAUSD #235 (CASE 3)
- EXISTING CONCRETE CUT OFF WALL

**SEWER CONSTRUCTION NOTES**

- INSTALL 48" STANDARD MANHOLE (PER DCSWCS STD. NO. SD-1A, SD-4, SD-5 & SD-6) WITH SINGLE COVER
- (TYP) INSTALL 4" SEWER LATERAL (PER DCSWCS STD. NO. SD-17, SD-22 & SD-25)
- TYPICAL LOCATION FOR SEWER LATERAL AT WATER MAIN CROSSING. ALL SEWER LATERALS MUST MAINTAIN 18" VERTICAL CLEARANCE BELOW WATER MAIN AT CROSSINGS.

**NOTES:**

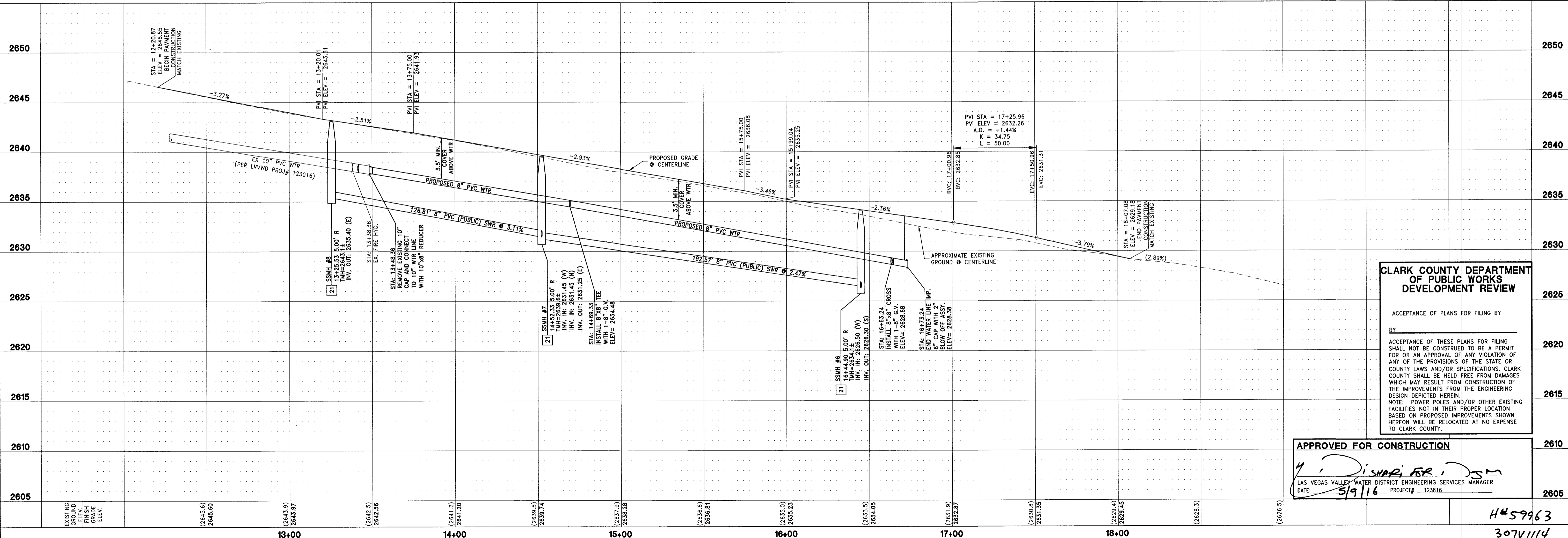
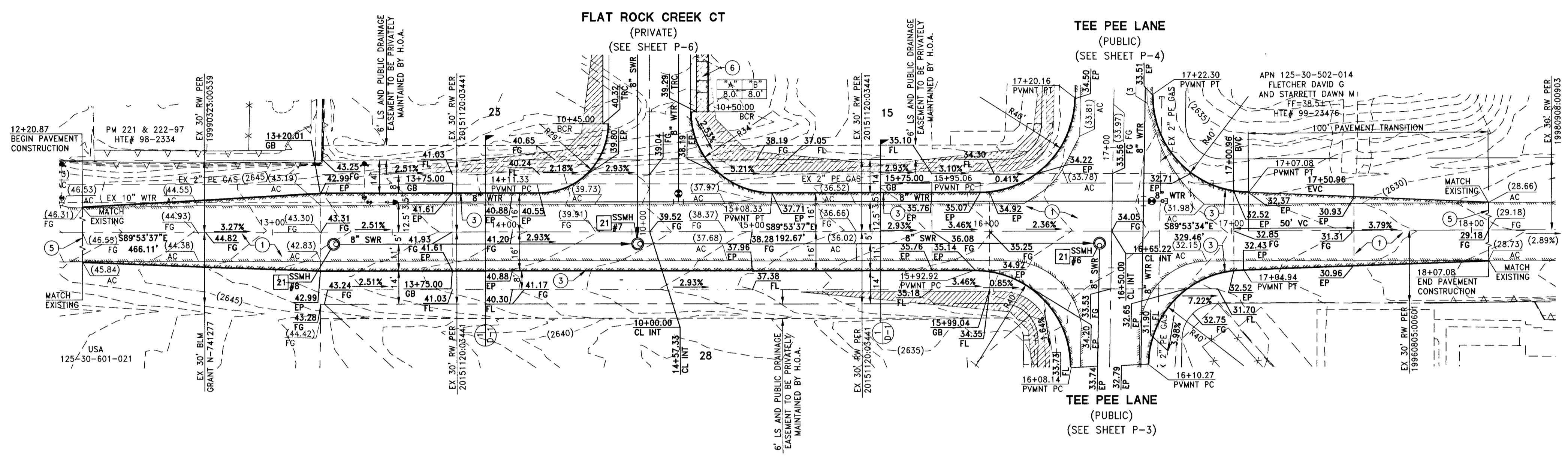
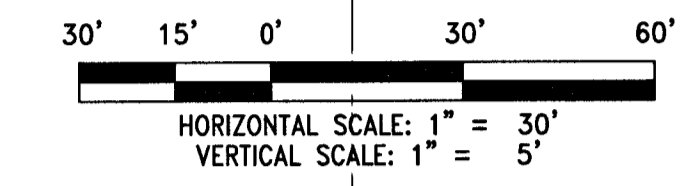
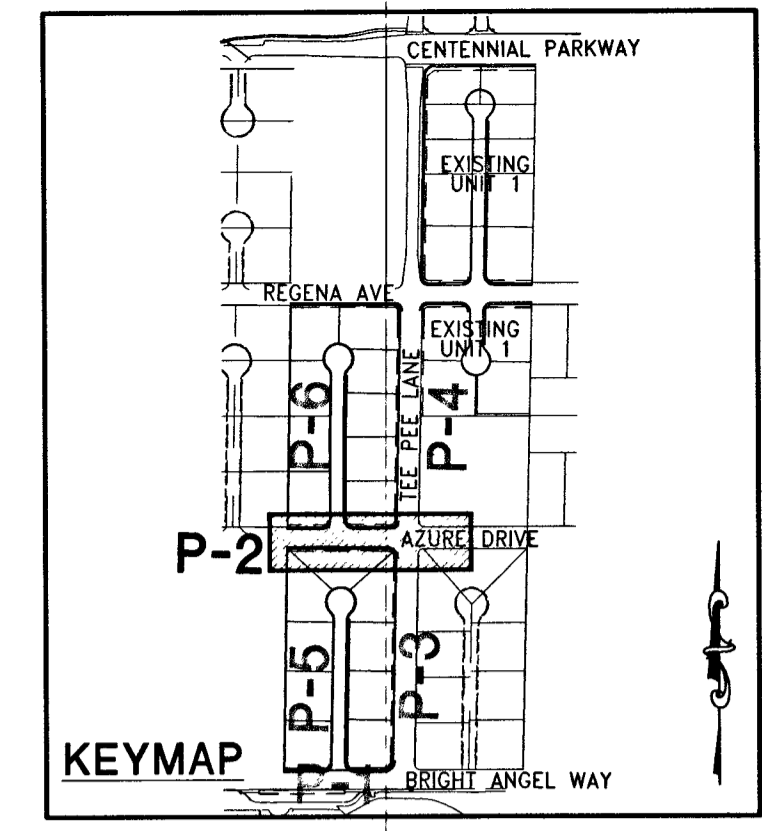
- ALL SEWER/STORM DRAINS CROSSING WATERLINES MUST CONFORM TO SECTION 2.22 OF UNIFORM DESIGN AND CONSTRUCTION STANDARDS FOR POTABLE WATER SYSTEMS (UDACS) FOR WATER AND STORM MAIN CROSSING AND CLEARANCES.
  - ALL WATER PIPE DIMENSIONS SHOWN ARE GIVEN FROM FITTING TO FITTING AND ARE FOR REFERENCE ONLY. CONTRACTOR TO VERIFY ALL DIMENSION PRIOR TO CONSTRUCTION.
  - MINIMUM 2" COVER PER UDACS SEC. 2.08.04 GRADING MUST BE COMPLETED PRIOR TO WATERLINE INSTALLATION.
- WATER MAIN JOINT DEFLECTION (PVC 4'-24")**  
PVC PIPE SHALL BE DEFLECTED AT THE JOINT ONLY. THE MAXIMUM ALLOWABLE DEFLECTION SHALL BE ONE (1) DEGREE PER JOINT WITH A MINIMUM RADIUS OF CURVATURE OF 1,150 FEET, PER UDACS 2.07.01 AND 2.07.02  
FOR CHANGES IN DIRECTION EXCEEDING THE MAXIMUM ALLOWABLE JOINT DEFLECTION, FITTINGS SHALL BE USED.  
NOTE:  
INSTALL PIPELINE MARKER BALLS IN TRENCH ABOVE EACH HORIZONTAL ELBOW FITTING PER UDACS PLATE NO. 15

**BENCHMARK**

CITY OF LAS VEGAS BENCHMARK 6LV99 245E  
A RIVET AND PLATE IN THE TOP OF CURB AT THE NORTHWEST CORNER OF CENTENNIAL PARKWAY AND HUALAPAI WAY.  
ELEVATION=844.924 METERS (NAVD'88)  
ELEVATION=2772.06 US SURVEY FEET (NAVD'88)

**BASIS OF BEARINGS**

SOUTH 89°47'00" EAST BEING THE BEARING OF THE NORTH LINE OF THE NORTHWEST QUARTER (NW 1/4) OF THE NORTHWEST QUARTER (NW 1/4) OF SECTION 30, TOWNSHIP 19 SOUTH, RANGE 60 EAST, M.D.M., CLARK COUNTY, NEVADA AS SHOWN BY MAP THEREOF ON FILE IN THE CLARK COUNTY RECORDER'S OFFICE IN FILE 89, PAGE 3 OF SURVEYS.



**CLARK COUNTY DEPARTMENT OF PUBLIC WORKS DEVELOPMENT REVIEW**

ACCEPTANCE OF PLANS FOR FILING BY \_\_\_\_\_

BY \_\_\_\_\_

ACCEPTANCE OF THESE PLANS FOR FILING SHALL NOT BE CONSTRUED TO BE A PERMIT FOR OR AN APPROVAL OF ANY VIOLATION OF ANY OF THE PROVISIONS OF THE STATE OR COUNTY LAWS AND/OR SPECIFICATIONS. CLARK COUNTY SHALL BE HELD FREE FROM DAMAGES WHICH MAY RESULT FROM CONSTRUCTION OF THE IMPROVEMENTS FROM THE ENGINEERING DESIGN DEPICTED HEREIN.

NOTE: POWER POLES AND/OR OTHER EXISTING FACILITIES NOT IN THEIR PROPER LOCATION BASED ON PROPOSED IMPROVEMENTS SHOWN HEREON WILL BE RELOCATED AT NO EXPENSE TO CLARK COUNTY.

**APPROVED FOR CONSTRUCTION**

*Y. Disnar, P.E., D.S.M.*  
LAS VEGAS VALLEY WATER DISTRICT ENGINEERING SERVICES MANAGER  
DATE: 5/9/16 PROJECT: 123816

H45963  
307V1114

DATE: MAY 04, 2016	REV	DESCRIPTION	BY	APP'D	DATE
HORIZ. SCALE: 1"=30'					
VERT. SCALE: 1"=5'					
DRAWN BY: CRZ/GB					
DESIGNED BY: AW					
CHECKED BY: CRZ					
APPROVED BY: CRZ					
PROJECT #: 3040.0038					

**LENNAR**  
2480 PASEO VERDE PARKWAY SUITE 220 Henderson, NV 89074  
PHONE: (702) 736-9200 FAX: (702) 736-9200

**RCI Engineering**  
4325 Dean Martin Road, Suite 300, Las Vegas, NV 89103  
PH: 702.633.0800 FAX: 702.633.0801

**CHRISTOPHER ZIRNYI CIVIL**  
Professional Engineer No. 13976

IMPROVEMENT PLANS FOR  
**CENTENNIAL AND TEE PEE UNIT 2**  
A SINGLE FAMILY RESIDENTIAL SUBDIVISION  
**PLAN AND PROFILE**  
AZURE DRIVE

CLARK COUNTY PROJECT: 123816 AGR#: 115542 OS: 125-30-NE XC 11148 NEVADA  
CLARK COUNTY PSY UNIT A 3007\_P02.dwg dmbach 5/04/16 10:35am

DATE: 5/9/16 PROJECT: 123816

5-4-16  
DRAWING  
**P-2**

SHEET 16 OF 24  
HTE NUMBER  
15-27518