

DISCLAIMER NOTE:

UTILITY LOCATIONS SHOWN HEREON ARE APPROXIMATE ONLY. IT SHALL BE THE CONTRACTOR'S RESPONSIBILITY TO DETERMINE THE EXACT HORIZONTAL AND VERTICAL LOCATION OF ALL EXISTING UNDERGROUND OR OVERHEAD UTILITIES PRIOR TO COMMENCING CONSTRUCTION. NO REPRESENTATION IS MADE THAT ALL EXISTING UTILITIES ARE SHOWN HEREON. THE ENGINEER ASSUMES NO RESPONSIBILITY FOR UTILITIES NOT SHOWN OR UTILITIES NOT SHOWN IN THEIR PROPER LOCATION. CONTRACTOR TO NOTIFY ENGINEER OF ANY CHANGES OR DISCREPANCIES.

Call before you Dig
AVOID CUTTING UNDERGROUND UTILITY LINES. IT'S COSTLY.

Call 811

FAST
Call before you UnderGround
1-702-432-5300
FREEMAN AND ARTERIAL SYSTEM OF TRANSPORTATION

AVOID HITTING OVERHEAD POWER LINES. IT'S COSTLY.
CALL BEFORE YOU DO OVERHEAD

1-800-227-2600

1-702-227-2929

CONSTRUCTION NOTES

- CONSTRUCT AC PAVEMENT PER DETAILS 1 THRU 5 ON SHEET D-1
- CONSTRUCT 30" ROLL CURB PER CCAUSD # 217.51
- CONSTRUCT CONCRETE CUT OFF WALL PER DETAIL 1 ON SHEET D-1
- CONSTRUCT 5' SIDEWALK PER CCAUSD # 234 (5-INCH THICK WHEN CONTIGUOUS TO ROLL CURB)
- SAW CUT AND MATCH EXISTING PAVEMENT. FINAL LIMITS TO BE FIELD DETERMINED BY INSPECTOR
- CONSTRUCT SIDEWALK RAMPS USING ARMOR TILE TRUNCATED DOMES OR EQUIVALENT PER CCAUSD #235 (CASE 3)
- EXISTING CONCRETE CUT OFF WALL

SEWER CONNECTION NOTE:

ONE OR MORE SEGMENTS OF THE DOWNSTREAM SEWER SYSTEM THAT WILL SERVE THIS PROJECT HAS NOT BEEN COMPLETED AND/OR ACCEPTED FOR MAINTENANCE BY THE CITY OF LAS VEGAS. ANY WORK DONE ON THIS PROJECT PRIOR TO THE COMPLETION AND/OR ACCEPTANCE OF THE DOWNSTREAM SEWER SYSTEM(S) SHALL BE DONE AT THE DEVELOPERS OWN RISK. THE CITY OF LAS VEGAS RESERVES THE RIGHT TO PREVENT THE PHYSICAL CONNECTION OF THIS PROJECT INTO THE DOWNSTREAM SEWER SYSTEM UNTIL ALL SEGMENTS HAVE BEEN COMPLETED AND ACCEPTED FOR MAINTENANCE, OR UNTIL SUCH TIME AS THEY ARE DEEMED AVAILABLE FOR SERVICE.

SEWER CONSTRUCTION NOTES

- INSTALL 48" STANDARD MANHOLE (PER DCSWCS STD. No. 21) 10'-14", SD-4, SD-5 & SD-6) WITH SINGLE COVER
- (TYP) INSTALL 4" SEWER LATERAL (PER DCSWCS STD No. SD-17, SD-22 & SD-25)
- TYPICAL LOCATION FOR SEWER LATERAL AT WATER MAIN CROSSING. ALL SEWER LATERALS MUST MAINTAIN 18" VERTICAL CLEARANCE BELOW WATER MAIN AT CROSSINGS.

NOTES:

- ALL SEWER/STORM DRAINS CROSSING WATERLINES MUST CONFORM TO SECTION 2.22 OF UNIFORM DESIGN AND CONSTRUCTION STANDARDS FOR POTABLE WATER SYSTEMS (UDACS) FOR WATER AND STORM MAIN CROSSING AND CLEARANCES
- ALL WATER PIPE DIMENSIONS SHOWN ARE GIVEN FROM FITTING TO FITTING AND ARE FOR REFERENCE ONLY. CONTRACTOR TO VERIFY ALL DIMENSION PRIOR TO CONSTRUCTION.
- MINIMUM 24" COVER PER UDACS SEC. 2.08.04 GRADING MUST BE COMPLETED PRIOR TO WATERLINE INSTALLATION.

WATER MAIN JOINT DEFLECTION (PVC 4"-24")

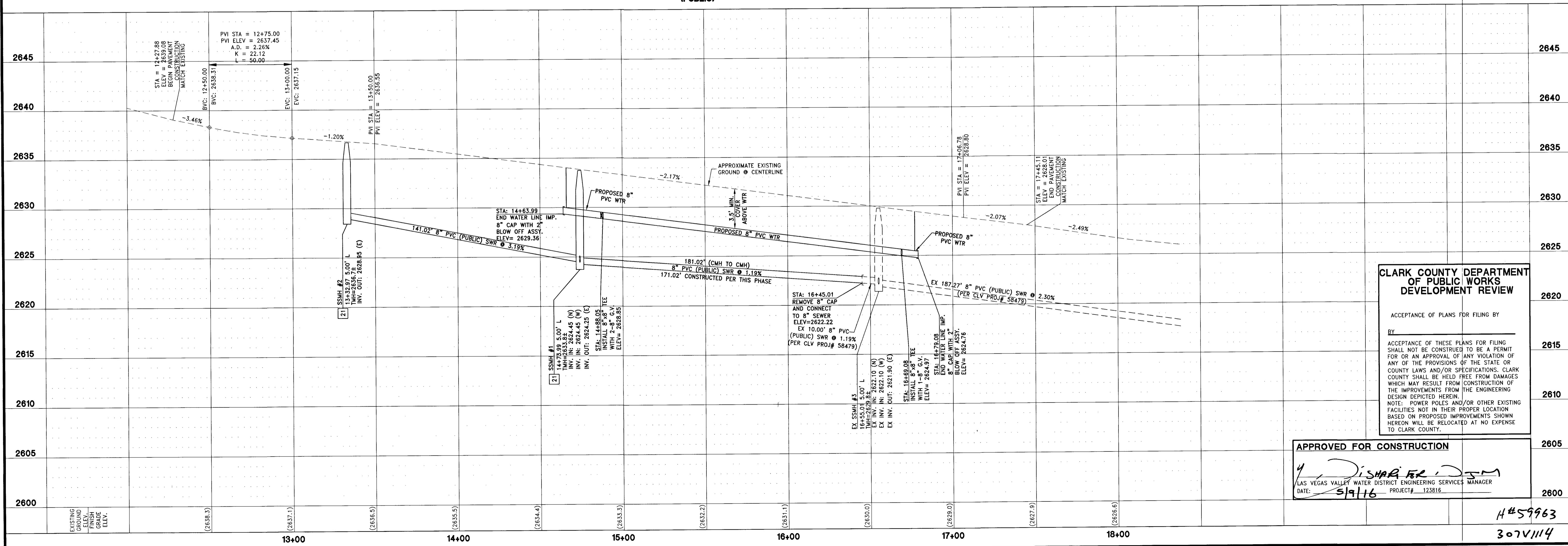
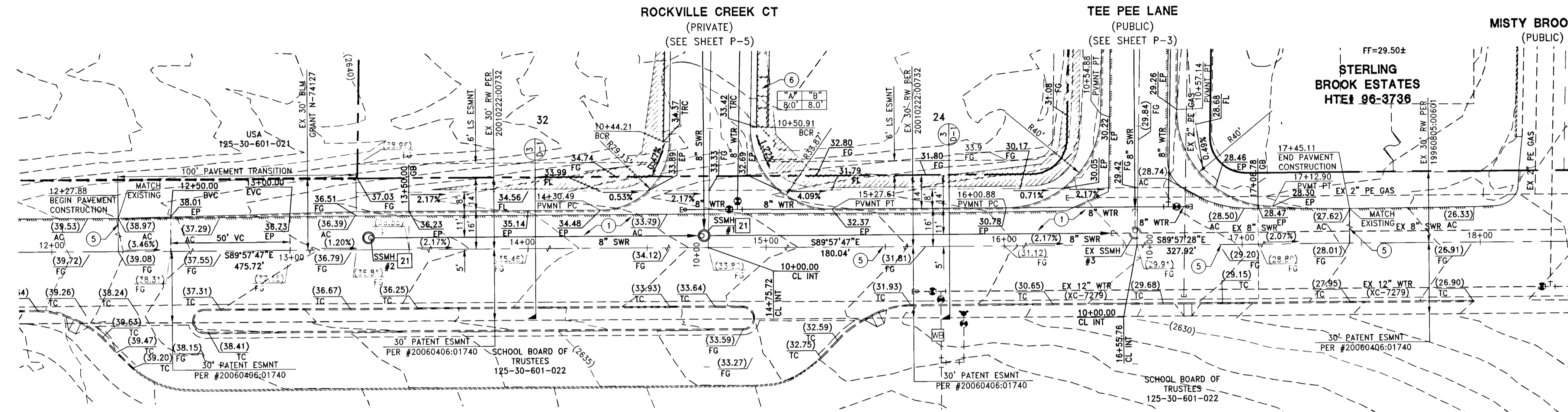
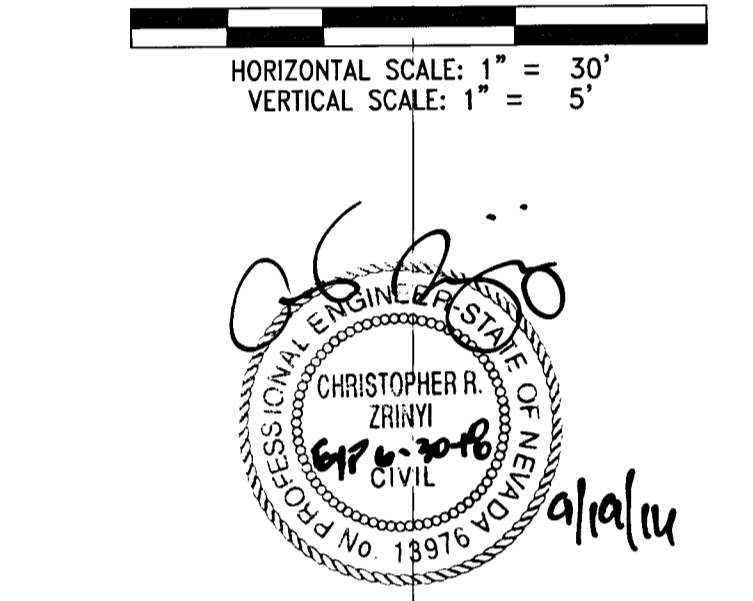
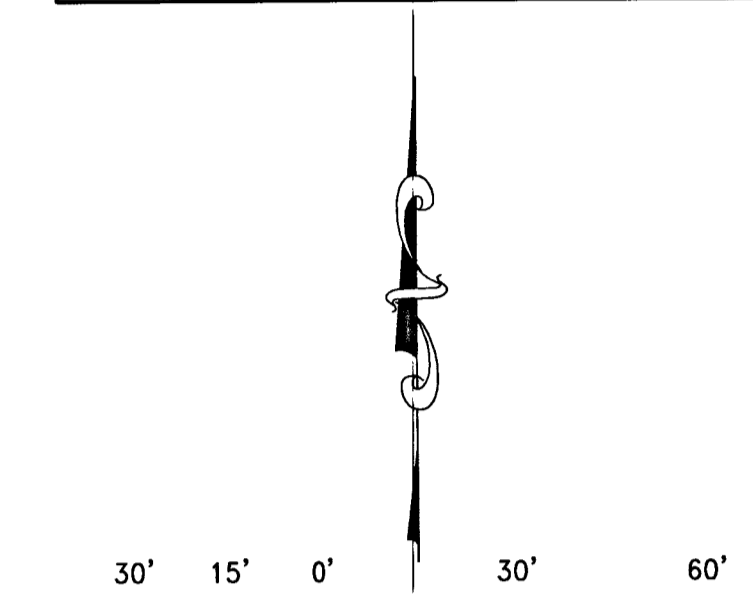
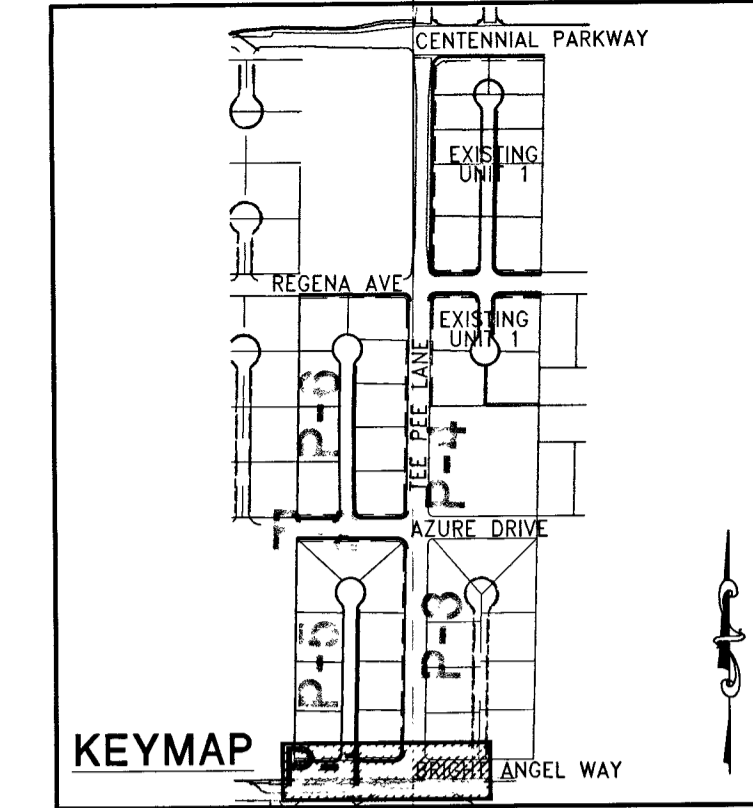
PVC PIPE SHALL BE DEFLECTED AT THE JOINT ONLY. THE MAXIMUM ALLOWABLE DEFLECTION SHALL BE ONE (1) DEGREE PER JOINT WITH A MINIMUM RADIUS OF CURVATURE OF 1,150 FEET. PER UDACS 2.07.01 AND 2.07.02 FOR CHANGES IN DIRECTION EXCEEDING THE MAXIMUM ALLOWABLE JOINT DEFLECTION, FITTINGS SHALL BE USED.
NOTE: INSTALL PIPELINE MARKER BALLS IN TRENCH ABOVE EACH HORIZONTAL ELBOW FITTING PER UDACS PLATE NO. 15

BENCHMARK

CITY OF LAS VEGAS BENCHMARK 6LV99 24SE5
A RIVET AND PLATE IN THE TOP OF CURB AT THE NORTHWEST CORNER OF CENTENNIAL PARKWAY AND HUALAPAI WAY.
ELEVATION=844.924 METERS (NAVD'88)
ELEVATION=2772.06 US SURVEY FEET (NAVD'88)

BASIS OF BEARINGS

North 89°47'00" EAST BEING THE BEARING OF THE NORTH LINE OF THE NORTHWEST QUARTER (NW 1/4) OF THE NORTHWEST QUARTER (NW 1/4) OF SECTION 30, TOWNSHIP 19 SOUTH, RANGE 60 EAST, M.D.M. CLARK COUNTY, NEVADA AS SHOWN BY MAP THEREOF ON FILE IN THE CLARK COUNTY RECORDER'S OFFICE IN FILE 89, PAGE 3 OF SURVEYS.



CLARK COUNTY DEPARTMENT OF PUBLIC WORKS DEVELOPMENT REVIEW

ACCEPTANCE OF PLANS FOR FILING BY

BY

ACCEPTANCE OF THESE PLANS FOR FILING SHALL NOT BE CONSTRUED TO BE A PERMIT FOR OR AN APPROVAL OF ANY VIOLATION OF ANY OF THE PROVISIONS OF THE STATE OR COUNTY LAWS AND/OR SPECIFICATIONS. CLARK COUNTY SHALL BE HELD FREE FROM DAMAGES WHICH MAY RESULT FROM CONSTRUCTION OF THE IMPROVEMENTS FROM THE ENGINEERING DESIGN DEPICTED HEREIN.
NOTE: POWER POLES AND/OR OTHER EXISTING FACILITIES NOT IN THEIR PROPER LOCATION BASED ON PROPOSED IMPROVEMENTS SHOWN HEREON WILL BE RELOCATED AT NO EXPENSE TO CLARK COUNTY.

APPROVED FOR CONSTRUCTION

Dis Harper, P.E.
LAS VEGAS VALLEY WATER DISTRICT ENGINEERING SERVICES MANAGER
DATE: 5/11/16 PROJECT: 123816

DATE: April 27, 2016	REV	DESCRIPTION
HORIZ. SCALE: 1"=30'	BY	DATE
VERT. SCALE: 1"=5'	APPD	
DRAWN BY: CR/dhb		
DESIGNED BY: AW		
CHECKED BY: CBZ		
APPROVED BY: CRZ		
PROJECT #: 123816		

LENNAR
2600 PASEO VERDE PARKWAY SUITE 120 HENDERSON, NV 89074
PHONE: (702) 736-9100 FAX: (702) 736-9200

RCI Engineering
4325 Dean Martin Road Suite 300, Las Vegas, NV 89103
PH: (702) 453-0800 FAX: (702) 453-0801

IMPROVEMENT PLANS FOR
CENTENNIAL AND TEE PEE UNIT 2
A SINGLE FAMILY RESIDENTIAL SUBDIVISION
PLAN AND PROFILE
BRIGHT ANGEL WAY

CLARK COUNTY PROJ.#123816 AG#:# 115542 QS:125-30-NE XC.1148 NEVADA
CLARK COUNTY PROJ.#123816 AG#:# 115542 QS:125-30-NE XC.1148 NEVADA

4-27-16
DRAWING
P-1
SHT 15 OF 24
HTE NUMBER
15-27518

H#59963
307V114