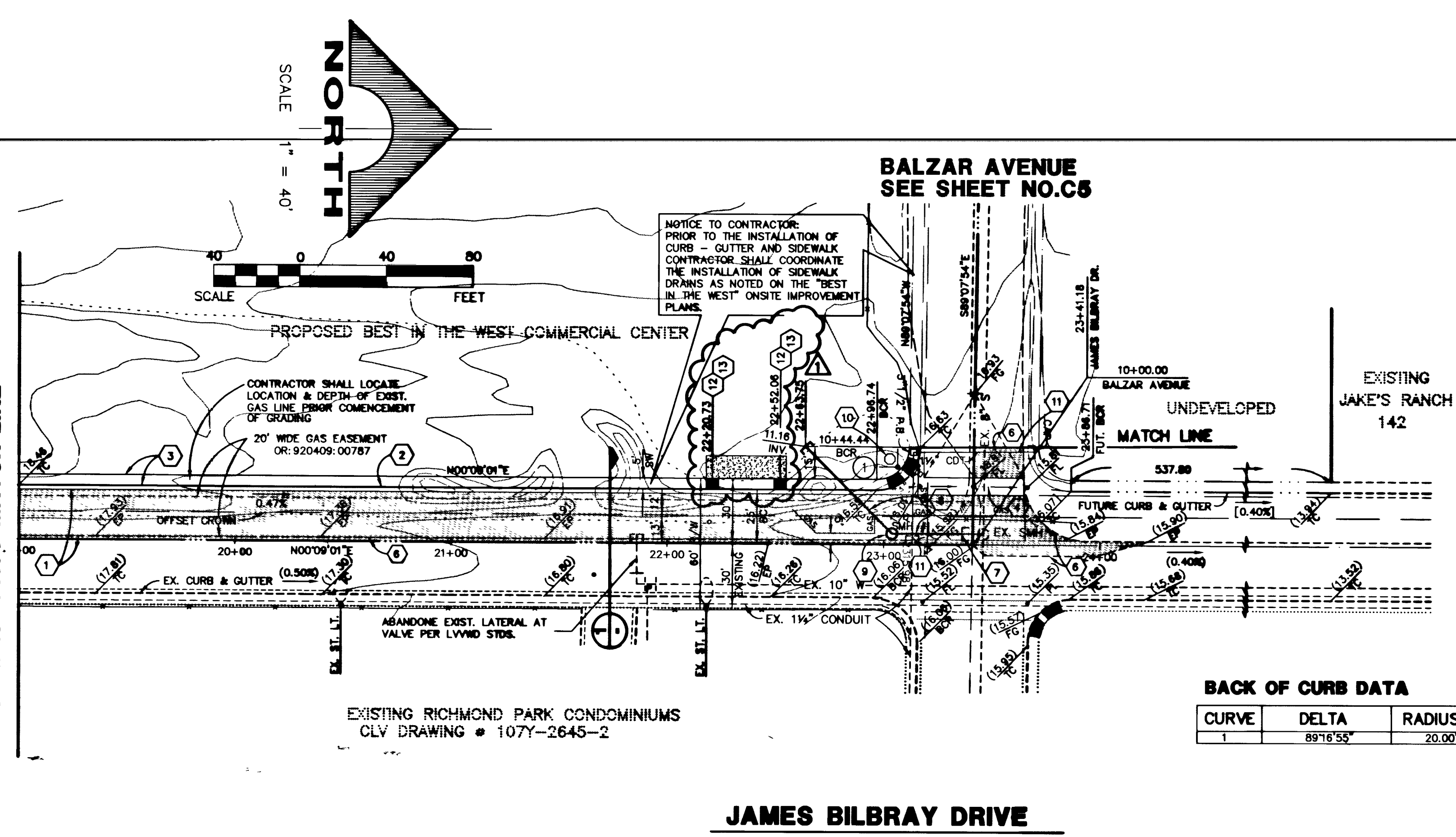


PLAN & PROFILE
SCALE: HORIZ. 1" = 40'
VERT. 1" = 4'

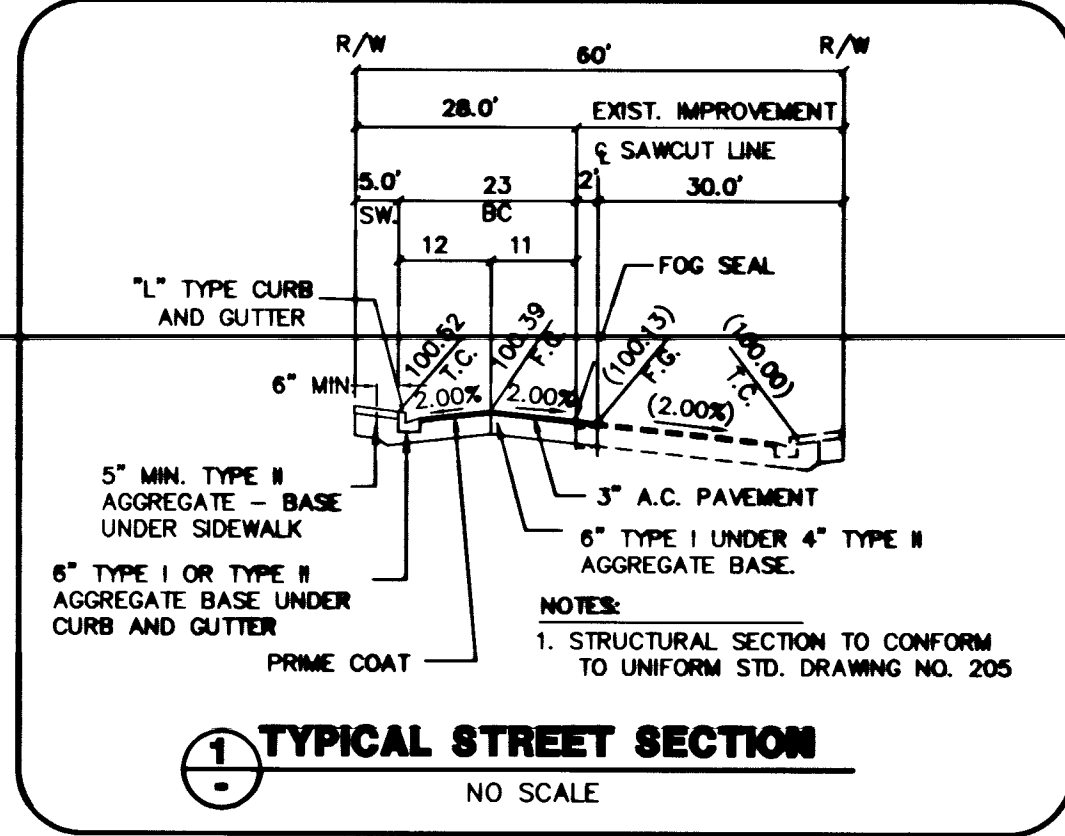
SEE SHEET NO. C3
STA. 19+00.00 MATCH LINE

SEE SHEET NO. C3
STA. 19+00.00 MATCH LINE



BACK OF CURB DATA

CURVE	DELTA	RADIUS	LENGTH	TANGENT
1	89°16'53"	20.00'	31.17'	19.75'



SEWER QUANTITIES (PUBLIC)

6" SANITARY SEWER MAIN	70.01 LF
48" # SEWER MANHOLE	1 EA

- CONSTRUCTION NOTES**
- CONSTRUCT 3" A.C. PAVING OVER TYPE I & II AGGREGATE BASE PER DETAIL THIS SHEET
 - CONSTRUCT 7" TYPE CURB PER USD No. 216
 - CONSTRUCT 5' WIDE CONCRETE SIDEWALK PER USD No. 234
 - CONSTRUCT CROSS GUTTER PER USD No. 228
 - CONSTRUCT SIDEWALK RAMP CASE I PER USD DWG No. 235
 - SAWOUT AND REMOVE EXISTING ASPHALTIC CONCRETE AND/OR CURB AND GUTTER
 - CONNECT TO EXISTING SANITARY SEWER. CONTRACTOR TO VERIFY INVERT ELEVATION AS NOTED ON PLAN AND REPORT ANY DEVIATION TO THE ENGINEER PRIOR TO COMMENCEMENT OF WORK.
 - CONSTRUCT 8" # PVC SANITARY SEWER MEETING ASTM D-3034 SDR 35 STANDARDS
 - CONSTRUCT 48" # SANITARY SEWER MANHOLE PER SANITATION DIST. STD DWG No. SD-1
 - INSTALL STOP SIGN(R-1) & STREET NAME SIGN PER CLV STDS.
 - CONNECT TO EXISTING STUB AND PROVIDE STREET LIGHT CONDUIT AND PULLBOX AS NOTED.
 - INSTALL TWO (2) UNDER SIDEWALK DRAINS PER UDS NO. 236 - 20' APART.
 - SEE ONSITE IMPROVEMENT PLANS FOR DETAIL.

- SEWER NOTES**
- ALL CONSTRUCTION AND MATERIALS SHALL BE IN ACCORDANCE WITH THE LATEST EDITION OF THE DESIGN & CONSTRUCTION STANDARDS FOR WASTEWATER COLLECTION SYSTEMS AND THE UNIFORM STANDARD SPECIFICATIONS FOR PUBLIC WORKS CONSTRUCTION OFF-SITE IMPROVEMENTS, CLARK COUNTY AREA, NEVADA, AS AMENDED. IN ALL CASES, THESE STANDARDS SHALL SUPERSEDE THE UNIFORM STANDARD SPECIFICATIONS. IT WILL BE THE RESPONSIBILITY OF THE CONTRACTOR TO BE AWARE OF THE CONTENTS OF THE ABOVE SPECIFICATION BOOKS.
 - IT SHALL BE THE CONTRACTOR'S RESPONSIBILITY TO PERFORM CONSTRUCTION AS PER PLANS. ANY ADDITIONS, DELETIONS OR CHANGES SHALL FIRST MEET WITH THE APPROVAL OF THE CONTROLLING AGENCY.
 - CHISEL "S" OR "C" IN CURBS WHERE SEWER OR GAS LATERALS PASS UNDER THE CURB.
 - POLYETHYLENE (PE) SEWER PIPE SHALL MEET ASTM D-3034 SDR35 SPECIFICATIONS. INSTALLED WITH SAND BEDDING AND BACKFILL OF TYPE II GRAVEL.
 - ALL MANHOLES IN PAVED STREETS, 80' R/W AND LARGER, SHALL HAVE CONCRETE COLLARS.
 - TEE SADDLES SHALL BE USED TO CONNECT SEWER LATERALS TO EXISTING MAIN LINES UP TO 12" DIA. SIZE. CONNECTION TO 15" OR LARGER MAINS SHALL REQUIRE SPECIAL PROCEDURES.
 - A SEWER MAIN CROSSING OVER A WATER MAIN OR LESS THAN 18" UNDER A WATER MAIN, MUST BE REINFORCED CONCRETE ENCASED FOR A DISTANCE NOT LESS THAN TEN FEET (10') TO EACH SIDE OF THE CENTERLINE OF THE WATER MAIN.
 - ALL CONTRACTORS INSTALLING SEWER MAINS THAT WILL BE UNDER THE JURISDICTION OF THE CONTROLLING AGENCY MUST BE CLASS "A" CONTRACTORS.
 - THE CITY OF LAS VEGAS WILL NOT ACCEPT ANY SEWER MAINS WHICH HAVE A VERTICAL DEFLECTION OF MORE THAN ONE TENTH (0.1) OF A FOOT FROM THE APPROVED CONSTRUCTION PLANS. SEWER MAINS FOUND TO EXCEED THIS TOLERANCE WILL HAVE TO BE REPAIRED OR REMOVED AND REPLACED TO THE SATISFACTION OF THE CITY ENGINEER PRIOR TO ACCEPTANCE BY THE CITY.

AVOID CUTTING UNDERGROUND UTILITY LINES. IT'S COSTLY
Call before you Dig.
1-800-227-2600
UNDERGROUND SERVICE (USA)

REVISIONS

NO.	DATE	DESCRIPTION
1		

10170
P.E. NO. DATE
6/2/16

G. C. WALLACE, INC.
Engineering/Architecture
1585 SOUTH RAINBOW BLVD., LAS VEGAS, NEVADA 89102

BEST IN THE WEST OFF-SITE IMPROVEMENTS
PACIFIC PROPERTIES
JAMES BILBRAY DRIVE

SHEET
C4
OF 11 SHEETS

497.954D
PLOTTED: 6/7/16
BWOFT-34.DWG

8383 11-23-32 107Y-445Z

