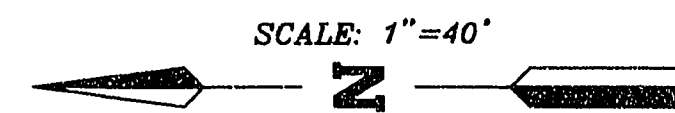


VICINITY MAP

SEE SHTS. C-10 & C-11 FOR CONTINUATION OF SEWER PLANS  
SEE SHTS. C-14 & C-15 FOR CONTINUATION OF WATER PLANS



NOTES

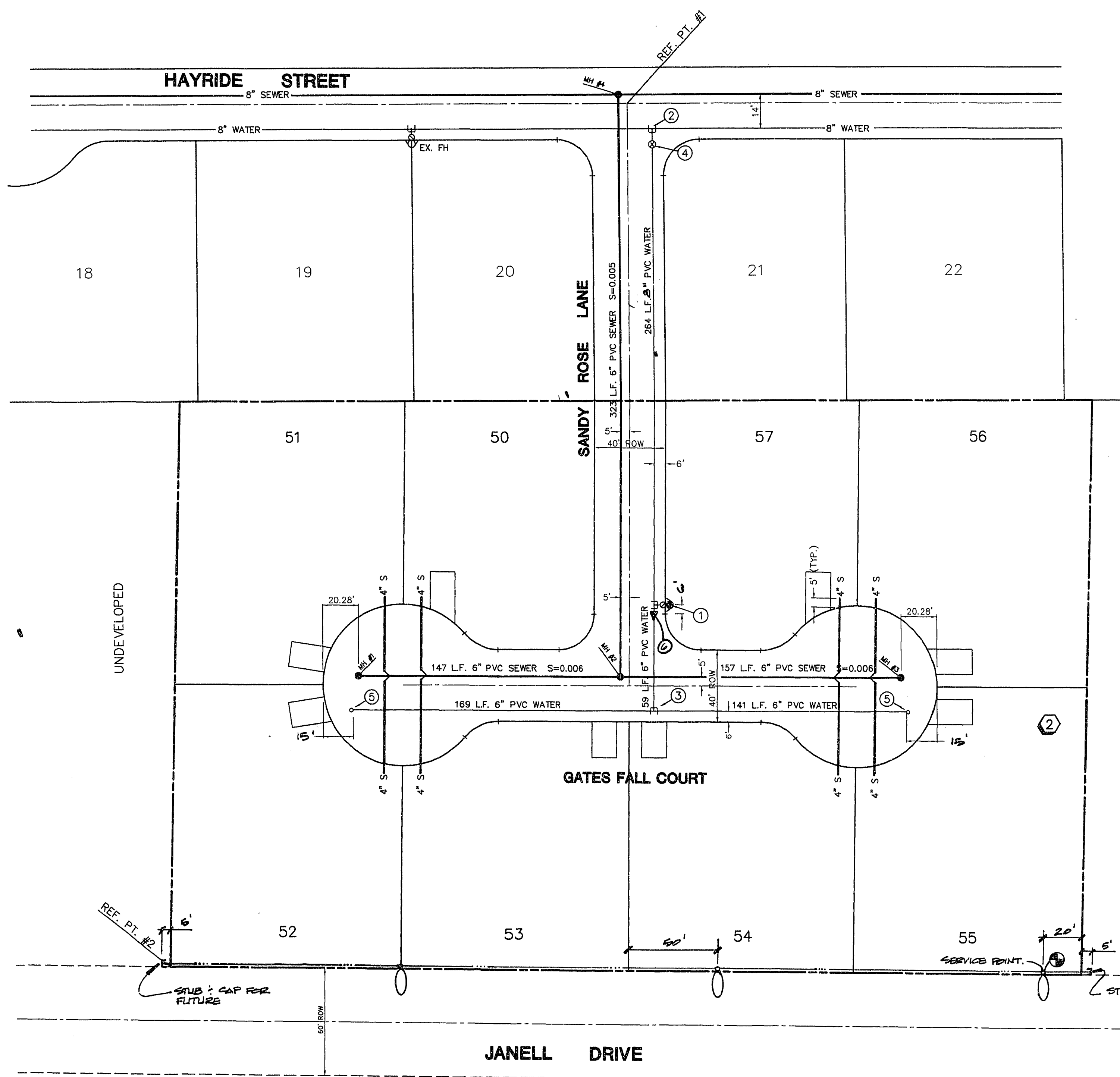
- EXISTING UTILITY LOCATIONS SHOWN HEREIN ARE APPROXIMATE ONLY. IT SHALL BE THE CONTRACTOR'S RESPONSIBILITY TO DETERMINE THE EXACT VERTICAL AND HORIZONTAL LOCATION OF ALL EXISTING UNDERGROUND UTILITIES PRIOR TO COMMENCING CONSTRUCTION. NO REPRESENTATION IS MADE THAT ALL EXISTING UTILITIES ARE SHOWN HEREON. THE ENGINEER ASSUMES NO RESPONSIBILITY FOR UTILITIES NOT SHOWN OR UTILITIES NOT SHOWN IN THEIR PROPER LOCATION.
- A 1"x 3/4" ANGLE METER STOP AND 3/4" METER BOX WILL BE REQUIRED WITH THE 1" SERVICE LATERALS FOR ALL SERVICES WITH 5/8" OR 3/4" SERVICES. DETAILS OF THE ABOVE INSTALLATION ARE AVAILABLE FROM THE ENGINEERING SERVICES DIVISION AND FROM THE DISTRICT'S INSPECTORS.

LAS VEGAS VALLEY WATER DISTRICT STANDARD NOTES

- NO WORK SHALL BEGIN UNTIL THE WATER PLANS HAVE BEEN RELEASED FOR CONSTRUCTION BY THE LVVWD. FOLLOWING WATER PLAN APPROVAL, 48 HOUR NOTICE SHALL BE GIVEN TO THE LVVWD COMMUNICATIONS CENTER (258-7171) PRIOR TO THE START OF CONSTRUCTION. NOTICE MUST BE GIVEN BY 2:00 P.M. THE BUSINESS DAY PRIOR TO A LVVWD INSPECTION.
- ALL WORK SHALL CONFORM TO LVVWD STANDARD PLATES, DRAWINGS, AND SPECIFICATIONS, AND THE UNIFORM DESIGN AND CONSTRUCTION STANDARDS FOR WATER DISTRIBUTION SYSTEMS (UDAOS), LATEST EDITION.
- ALL WORK, EXCEPT AS MODIFIED BY THESE PLANS OR BY NOTE 2, SHALL BE DONE IN ACCORDANCE WITH THE MOST CURRENT DRAFT OR EDITION OF THE UNIFORM STANDARD SPECIFICATIONS FOR PUBLIC WORKS CONSTRUCTION OFFSITE IMPROVEMENT, CLARK COUNTY AREA.
- A SINGLE PIPE MATERIAL SHALL BE USED THROUGHOUT THE PROJECT UNLESS OTHERWISE APPROVED BY THE LVVWD.
- ALL SERVICE LATERALS TWO (2) INCHES IN DIAMETER AND SMALLER SHALL BE COPPER TUBING WITH LVVWD APPROVED SERVICE SADDLES.
- ALL WATER METER BOXES SHALL BE LOCATED OUTSIDE OF DRIVEWAY AREAS.
- ALL VALVES SHALL BE LOCATED OUTSIDE OF DRIVEWAYS, VALLEY AND CURB GUTTERS.
- THE FOLLOWING REQUIREMENTS MUST BE MET IN THE EVENT A WATER LINE AND SANITARY OR STORM SEWER LINE CROSS:
  - A MINIMUM EIGHTEEN (18) INCH VERTICAL SEPARATION (OUTSIDE TO OUTSIDE) MUST BE MAINTAINED WHEN THE WATER LINE IS INSTALLED OVER THE SANITARY OR STORM SEWER LINE. IF THE VERTICAL SEPARATION CANNOT BE MAINTAINED OR THE WATER LINE MUST BE PLACED UNDER THE SANITARY OR STORM SEWER LINE, THE SANITARY OR STORM SEWER LINE MUST BE CONSTRUCTED WITH ONE OF THE FOLLOWING, OR AS SHOWN ON THESE PLANS:
    - POTABLE WATER SUPPLY QUALITY MATERIAL
    - ENCASEMENT, WITH FOUR (4) INCH CONCRETE (MINIMUM)
    - SLEEVING WITH POTABLE WATER SUPPLY QUALITY PIPE.

EACH PROVISION MUST EXTEND ALONG THE SANITARY OR STORM SEWER, ON EITHER SIDE OF THE MAIN, A MINIMUM 10 FOOT DISTANCE PERPENDICULAR TO THE WATER MAIN EXTERIOR.

- WARNING TAPE SHALL BE REQUIRED OVER ALL MAINS, ALL SIX (6) INCH DIAMETER AND LARGER SERVICE LATERALS, AND ANY SERVICE LATERAL NOT INSTALLED PERPENDICULAR TO THE MAIN IN ACCORDANCE WITH STANDARD PLATE NO. 27.
- ALL WATER FACILITIES SHALL BE FILLED, DISINFECTED, PRESSURE TESTED, FLUSHED, FILLED AND AN ACCEPTABLE WATER SAMPLE OBTAINED, PRIOR TO CONNECTION TO THE LVVWD'S DISTRIBUTION SYSTEM.
- THE CONTRACTOR MUST OBTAIN ALL METERS TWO (2) INCHES AND SMALLER FROM LVVWD CENTRAL STORES. TELEPHONE 258-3152 FORTY-EIGHT (48) HOURS PRIOR TO PICKUP.
- CONSTRUCTION MAY INTERRUPT SERVICE. WITH LVVWD APPROVAL AND PROPER NOTIFICATION, BETWEEN THE HOURS OF 10 PM AND 6 AM, SUNDAY THROUGH THURSDAY. CIRCUMSTANCES MAY REQUIRE TEMPORARY SERVICE FEEDS BE INSTALLED, WITHOUT LVVWD REIMBURSEMENT. ANY TEMPORARY SERVICE FEED MUST HAVE PRIOR LVVWD APPROVAL.
- ALL WATER FACILITY CONSTRUCTION MATERIALS USED MUST BE AS LISTED ON THE LVVWD'S PRE-APPROVED MATERIALS AND MANUFACTURERS LISTING FOR NEW FACILITIES, LATEST REVISION, OR SPECIFICALLY APPROVED ON THESE PLANS.



BENCHMARK

B.M. #C0004A2 - RAILROAD SPIKE IN POWER POLE AT SOUTHEAST QUADRANT OF LONE MOUNTAIN ROAD AND CIMARRON ROAD.  
ELEV. = 23717.77 C.C.E.D. DATUM

MANHOLE CONTROL TABLE

MH #	NORTHING	EASTING
1	5969.23	6763.68
2	5822.46	6762.65
3	5865.99	6761.55
4	5820.15	7086.08
REFERENCE POINTS		
1	5815.16	7081.07
2	6076.54	6602.29

CLARK COUNTY FIRE DEPT. NOTES

- ALL WORK SHALL BE DONE IN STRICT ACCORDANCE WITH APPENDIX IIIB AS ADOPTED AND THIS GUIDE.
- ON ANY BUILDING CONSTRUCTION, ACCESSIBLE FIRE HYDRANTS SHALL BE INSTALLED BEFORE COMBUSTIBLE MATERIALS ARE DELIVERED TO THE SITE AND CONSTRUCTION COMMENCES. SAID FIRE HYDRANTS SHALL BE IN GOOD WORKING ORDER WITH THE REQUIRED WATER SUPPLY AND NEED TO BE ACCEPTED BY THE PUBLIC WORKS DEPT. AND THE FIRE PREVENTION DIVISION.
- IF DURING CONSTRUCTION IT BECOMES NECESSARY TO CLOSE ANY CONTROL VALVE OR PLACE A HYDRANT OUT OF SERVICE, THE FIRE PREVENTION DIVISION MUST BE CONTACTED.
- PAINTING OF CURBS AND/OR STRIPING OF ASPHALT AREAS AND PROTECTION OF HYDRANTS FROM PHYSICAL INJURY PER FIRE INSTALLATION SPECIFICATIONS OF THE FIRE PREVENTION DIVISION.
- NO FIRE HYDRANT SHALL BE LOCATED WITHIN 25 FEET OF ANY STRUCTURE, OR 5 FEET OF A DRIVEWAY, POWER POLE, LIGHT STANDARD, OR ANY OTHER OBSTRUCTION. FOR WALL, FENCE, AND PLANTER LOCATIONS, A PERIMETER AROUND THE HYDRANT MEASURING A MINIMUM OF 3 FEET FROM ITS EXTERIOR SHALL BE MAINTAINED CLEAR OF ALL OBSTRUCTIONS AT ALL TIMES.
- AT ALL TIMES DURING CONSTRUCTION SUITABLE EMERGENCY VEHICLE ACCESS ROADS MUST BE MAINTAINED. ROADWAYS MUST BE SMOOTH, COMPACTED, AND CAPABLE OF SUPPORTING THE IMPOSED LOADS OF ALL EMERGENCY VEHICLES.
- PRIOR TO ACCEPTANCE OF ANY FIRE SERVICE MAIN, A SATISFACTORY HYDROSTATIC TEST WITH PIPING JOINTS UNCOVERED MUST BE CONDUCTED. APPROVED PLANS AND A CONTRACTOR'S MATERIALS AND TEST CERTIFICATE MUST BE PROVIDED AT TIME OF INSPECTION.
- BLUE REFLECTIVE MARKERS MUST BE INSTALLED BEFORE FINAL HYDRANT ACCEPTANCE CAN BE ATTAINED [91 UPC SEC. 10.105 (c)].

QUANTITY ESTIMATE

- ① FIRE HYDRANT W/ASSEMBLY ----- 1 EA
- ② 8" X 8" X 8" TEE ----- 1 EA
- ③ 6" X 6" X 6" TEE ----- 1 EA
- ④ 6" GATE VALVE ----- 1 EA
- ⑤ 6" CAP W/2" BLOWOFF ----- 2 EA
- ⑥ 8" X 6" REPLUG ----- 1 EA
- 3/4" METER FROM L.V.V.W.D. ----- 8 EA
- 1" SERVICE ----- 8 EA
- 6" WATER MAIN ----- 300 LF
- 4" DIAMETER MANHOLE ----- 3 EA
- 8" SEWER MAIN ----- 264 LF
- 4" SEWER LATERALS ----- 372 LF
- WYE STUBS ----- 8 EA
- NOTE: THESE QUANTITIES ARE ONLY ESTIMATES, CONTRACTOR TO VERIFY.
- 100 W. HPS STREET LIGHT ----- 3 EA.
- 1 1/4" PVC CONDUIT ----- 520 LF.
- R.C.O.C. SERVICE POINT ----- 1 EA.

PROJECT HAND: CIMARRON ESTATES P. C-23 OF 23  
This project water plan complies with the Las Vegas Valley Water District's technical requirements. However, this water plan is NOT APPROVED FOR CONSTRUCTION at this time and this signature does not provide or imply a water commitment.

*Signature*  
LVVWD

APPROVAL

*Signature* 3/26/96  
LAS VEGAS VALLEY WATER DISTRICT DATE

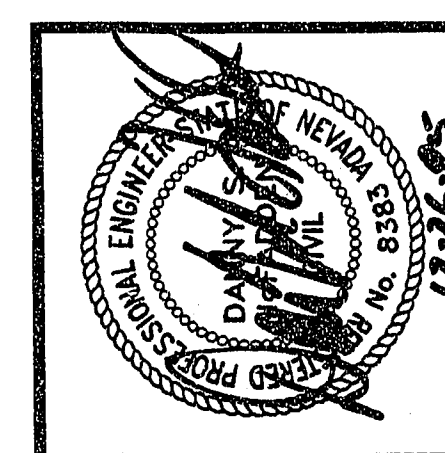
*Signature* 12-28-95  
CLARK COUNTY FIRE DEPARTMENT DATE

APPROVAL OF THESE PLANS SHALL NOT BE CONSTRUED TO BE A PERMIT FOR, OR AN APPROVAL OF, ANY VIOLATION OF ANY OF THE PROVISIONS OF THE STATE OR COUNTY LAWS. FIRE FLOW 1500 GPM AT 20 PSI RESIDUAL.

Call before you Dig.  
1-800-227-2600  
UNDERGROUND SERVICE (USA)

APPROVAL/REV	DATE	BY	REVISION
1	12/13/95	ROCKY	ADDED LOTS 50 - 57
2	5-16-96	PE	ADDED ST. LIGHTS ON JANELL DR.

MASTER UTILITY PLAN  
CIMARRON ESTATES



ESI ENGINEERS AND SURVEYORS INC.  
PLANNERS • CONSULTING ENGINEERS • SURVEYORS  
7540 WEST SHARAH AVENUE • LAS VEGAS, NEVADA 89117 • (702) 248-6415

W.O. # : 885 B770  
BY : SDF/PC  
DATE : 7/31/95  
SCALE : 1"=40'

SHEET C-23 OF 23 SHEETS

SCF  
07/03/95  
08:09

19-60-33

11-23-156 330093 3074-4405