

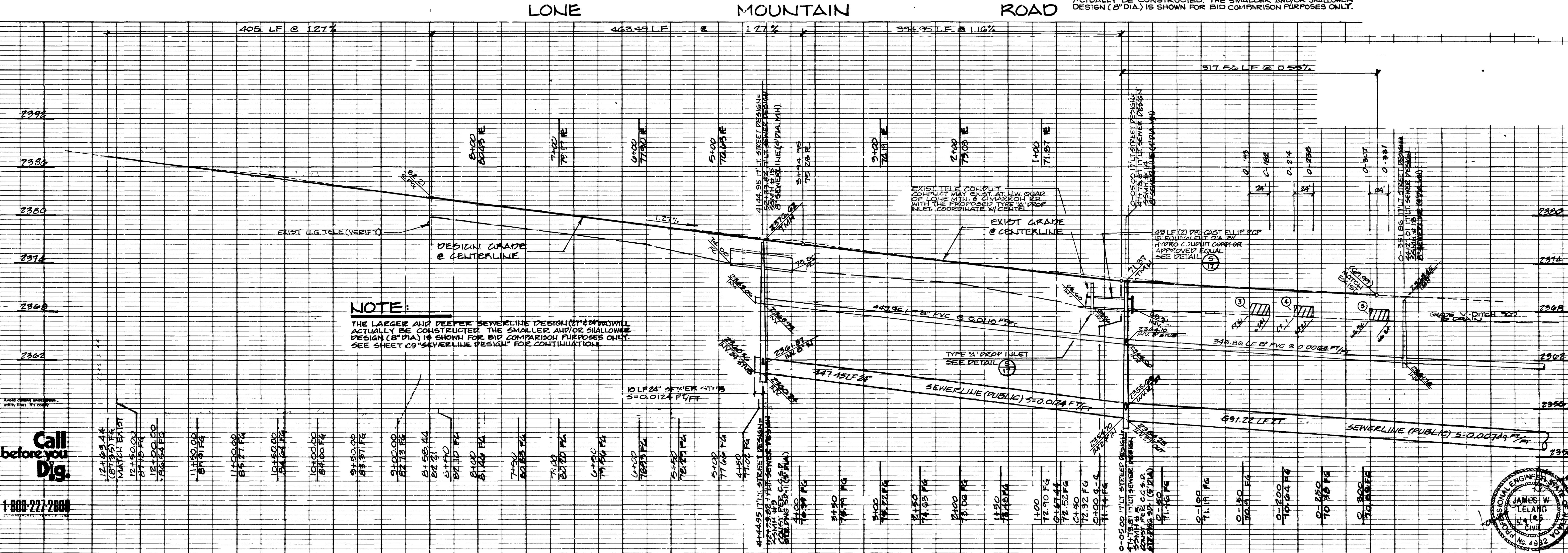
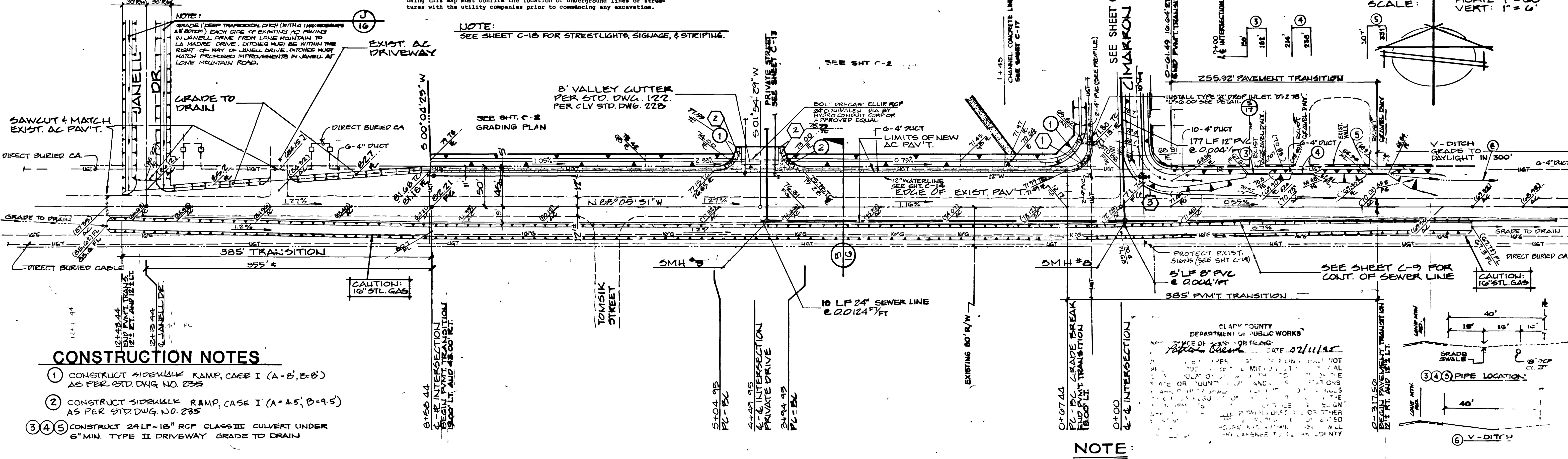
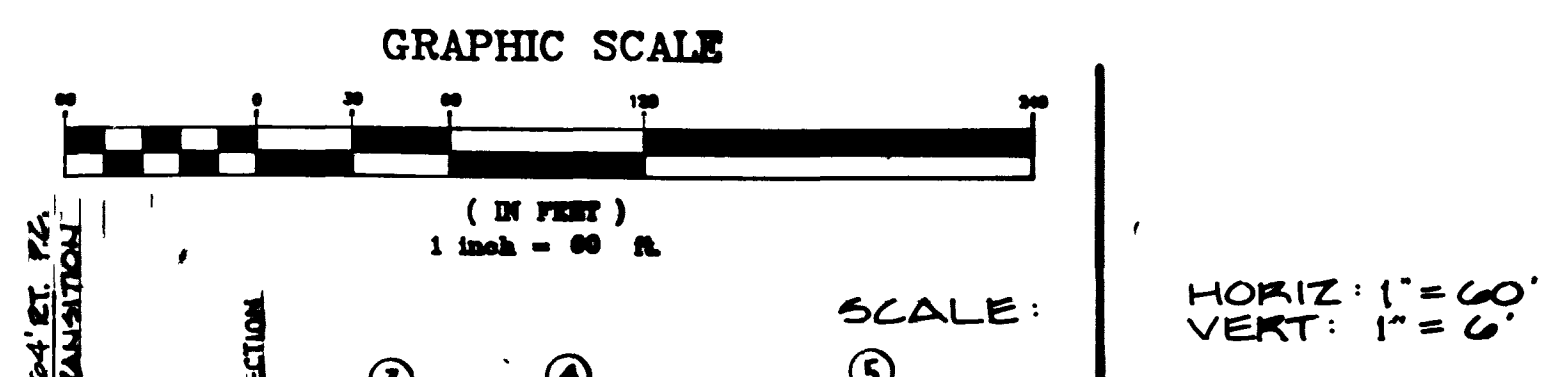
ELEVATION EQUATION:
All plan elevations + 1.68' = NAVD 88 Datum

BENCH MARK
B.M. No. C0004A2-Rail Road spike in power pole at Southeast Quad. of Lone Mountain Road and Cimarron Road
Elev. = 2371.77 C.C.E.D. Datum (NGVD 29)

UTILITY NOTE
The location of underground utilities shown hereon has been determined from surface evidence of their existence or from information obtained from the utility companies. The Engineer accepts no liability for the existence or non-existence of utility lines. Contractors and others using this map must confirm the location of underground lines or structures with the utility companies prior to commencing any excavation.

OCR CURVE DATA:

K	L	A	T
30.00	48.05	91°50'06"	30.96'
30.00	47.12	90°00'00"	30.00'
30.00	51.24	87°50'24"	57.02'



Call before you Dig.
1-800-227-2888

BAUGHMAN & TURNER INC.
CIVIL ENGINEERS
120 WILSON STREET
CLARK COUNTY, NEVADA
(702) 334-9771

STREET DESIGN
LONE MOUNTAIN ROAD
SECTION 23 TOWNSHIP 19 SOUTH, RANGE 06 EAST, MERIDIAN CLARK COUNTY, NEVADA
CIMARRON ESTATES

DATE: 02/11/15
DESIGN: K.E.T.
DRAWN: K.E.T.
CHECK: []
SCALE: []

REVISIONS:
NO. 1
DATE: 02/11/15
BY: []
DESCRIPTION: []

SHEET 23 OF 24
PROJECT NO. 330093

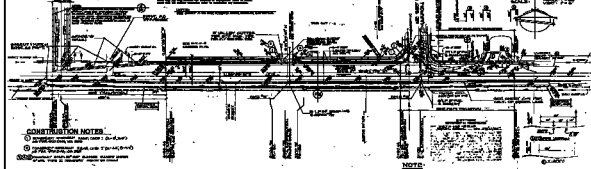
DATE: 10/15/1964
SCALE: 1" = 100'

LEGEND
1. 12" DIA. CONCRETE PILE
2. 12" DIA. STEEL PILE
3. 12" DIA. WOOD PILE
4. 12" DIA. ALUMINUM PILE
5. 12" DIA. GALVANIZED IRON PILE
6. 12" DIA. BRASS PILE
7. 12" DIA. COPPER PILE
8. 12" DIA. INVAR PILE
9. 12" DIA. MONEL PILE
10. 12" DIA. TITANIUM PILE
11. 12" DIA. CARBON STEEL PILE
12. 12" DIA. STAINLESS STEEL PILE
13. 12" DIA. ALUMINUM BRASS PILE
14. 12" DIA. BRASS BRASS PILE
15. 12" DIA. COPPER BRASS PILE
16. 12" DIA. INVAR BRASS PILE
17. 12" DIA. MONEL BRASS PILE
18. 12" DIA. TITANIUM BRASS PILE
19. 12" DIA. CARBON STEEL BRASS PILE
20. 12" DIA. STAINLESS STEEL BRASS PILE

UTILITY NOTE
1. ALL UTILITIES SHOWN ARE BASED ON RECORD DRAWINGS AND FIELD SURVEY.
2. UTILITIES NOT SHOWN ARE TO BE LOCATED BY FIELD SURVEY.
3. UTILITIES TO BE DELETED OR RELOCATED ARE SHOWN WITH DASHED LINES.
4. UTILITIES TO BE MAINTAINED ARE SHOWN WITH SOLID LINES.

NOT TO SCALE
1. 12" DIA. CONCRETE PILE
2. 12" DIA. STEEL PILE
3. 12" DIA. WOOD PILE
4. 12" DIA. ALUMINUM PILE
5. 12" DIA. GALVANIZED IRON PILE
6. 12" DIA. BRASS PILE
7. 12" DIA. COPPER PILE
8. 12" DIA. INVAR PILE
9. 12" DIA. MONEL PILE
10. 12" DIA. TITANIUM PILE
11. 12" DIA. CARBON STEEL PILE
12. 12" DIA. STAINLESS STEEL PILE
13. 12" DIA. ALUMINUM BRASS PILE
14. 12" DIA. BRASS BRASS PILE
15. 12" DIA. COPPER BRASS PILE
16. 12" DIA. INVAR BRASS PILE
17. 12" DIA. MONEL BRASS PILE
18. 12" DIA. TITANIUM BRASS PILE
19. 12" DIA. CARBON STEEL BRASS PILE
20. 12" DIA. STAINLESS STEEL BRASS PILE

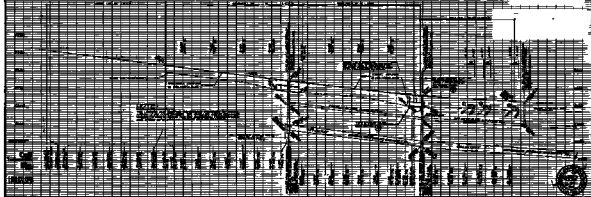
SCALE
1" = 100'



CONSTRUCTION NOTES
1. ALL PILES TO BE DRIVEN TO THE SAME DEPTH.
2. ALL PILES TO BE DRIVEN TO THE SAME BEARING CAPACITY.
3. ALL PILES TO BE DRIVEN TO THE SAME LOCATION.

NOTE
1. ALL PILES TO BE DRIVEN TO THE SAME DEPTH.
2. ALL PILES TO BE DRIVEN TO THE SAME BEARING CAPACITY.
3. ALL PILES TO BE DRIVEN TO THE SAME LOCATION.

LOUISIANA MOUNTAIN ROAD



1. 12" DIA. CONCRETE PILE
2. 12" DIA. STEEL PILE
3. 12" DIA. WOOD PILE
4. 12" DIA. ALUMINUM PILE
5. 12" DIA. GALVANIZED IRON PILE
6. 12" DIA. BRASS PILE
7. 12" DIA. COPPER PILE
8. 12" DIA. INVAR PILE
9. 12" DIA. MONEL PILE
10. 12" DIA. TITANIUM PILE
11. 12" DIA. CARBON STEEL PILE
12. 12" DIA. STAINLESS STEEL PILE
13. 12" DIA. ALUMINUM BRASS PILE
14. 12" DIA. BRASS BRASS PILE
15. 12" DIA. COPPER BRASS PILE
16. 12" DIA. INVAR BRASS PILE
17. 12" DIA. MONEL BRASS PILE
18. 12" DIA. TITANIUM BRASS PILE
19. 12" DIA. CARBON STEEL BRASS PILE
20. 12" DIA. STAINLESS STEEL BRASS PILE

