

DISCLAIMER NOTE:

UTILITY LOCATIONS SHOWN HEREON ARE APPROXIMATE ONLY. IT SHALL BE THE CONTRACTOR'S RESPONSIBILITY TO DETERMINE THE EXACT HORIZONTAL AND VERTICAL LOCATION OF ALL EXISTING UNDERGROUND OR OVERHEAD UTILITIES PRIOR TO COMMENCING CONSTRUCTION. NO REPRESENTATION IS MADE THAT ALL EXISTING UTILITIES ARE SHOWN HEREON. THE ENGINEER ASSUMES NO RESPONSIBILITY FOR UTILITIES NOT SHOWN OR UTILITIES NOT SHOWN IN THEIR PROPER LOCATION. CONTRACTOR TO NOTIFY ENGINEER OF ANY CHANGES OR DISCREPANCIES.

Call before you Dig
 Avoid overhead power line contact. If a cavity.
Call before you Overhead
 Call before you dig. Avoid cutting underground utilities. Call before you dig. Call before you dig. Call before you dig.
 1-702-227-2929
 Nevada Power
 Environment and Safety Services Department
 1-800-227-2600
 Clark County Public Utilities
 1-702-455-6000

LEGAL DESCRIPTION

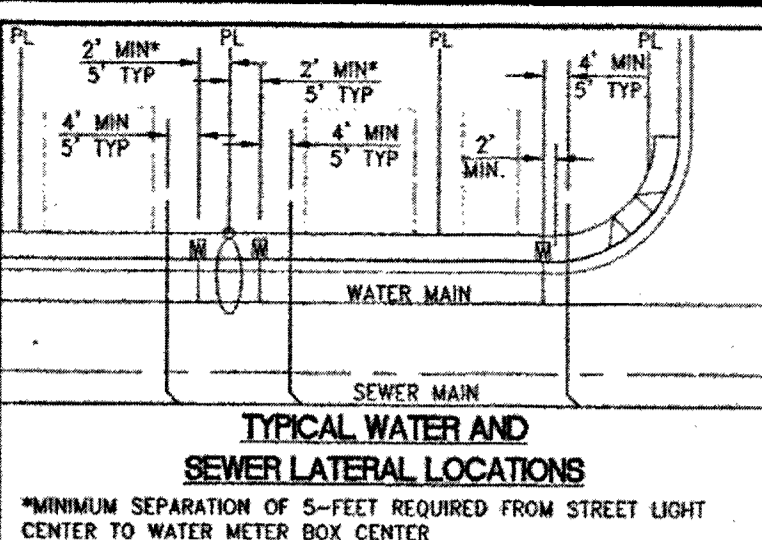
ALL OF PARCEL 0 AS SHOWN ON THE FINAL MAP OF SUMMERLIN VILLAGE 230, UNIT NO. 2, ON FILE IN THE OFFICE OF THE COUNTY RECORDER OF CLARK COUNTY, NEVADA IN BOOK 145 OF PLATS AT PAGE 83, SITUATE IN SECTION 27, TOWNSHIP 20 SOUTH, RANGE 59 EAST, M.D.M., CITY OF LAS VEGAS, CLARK COUNTY NEVADA.

BENCHMARK

CITY OF LAS VEGAS BENCHMARK STATION 5L09 34NE6
 RIVET AND PLATE IN TOP OF CURB AT THE NORTHEAST CORNER OF DESERT FOOTHILLS AND ALTA DRIVE.
 ELEVATION = 1007.197 METERS (NAVD'88)
 ELEVATION = 3304.45 US SURVEY FEET (NAVD'88)

BASIS OF BEARINGS

NORTH 89°46'49" EAST, BEING THE BEARING OF THE NORTH LINE OF SECTION 27, TOWNSHIP 20 SOUTH, RANGE 59 EAST, M.D.M., CITY OF LAS VEGAS, CLARK COUNTY, NEVADA AS SHOWN BY MAP THEREOF ON FILE IN FILE 91, PAGE 28 OF PARCEL MAPS IN THE COUNTY RECORDER'S OFFICE, CLARK COUNTY, NEVADA.



BACKWATER VALVE

ALL LOTS WITH THIS SYMBOL REQUIRE A BACKWATER VALVE

PRESSURE REDUCING VALVE NOTE

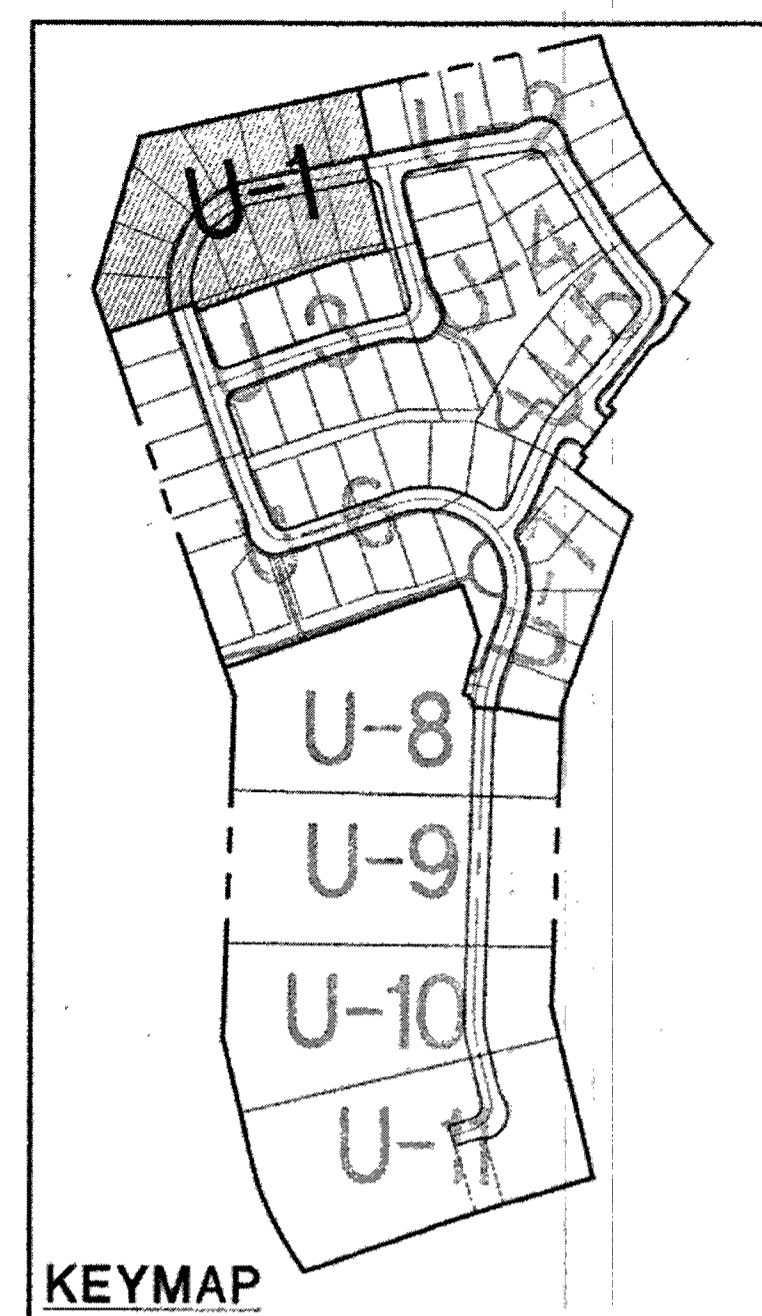
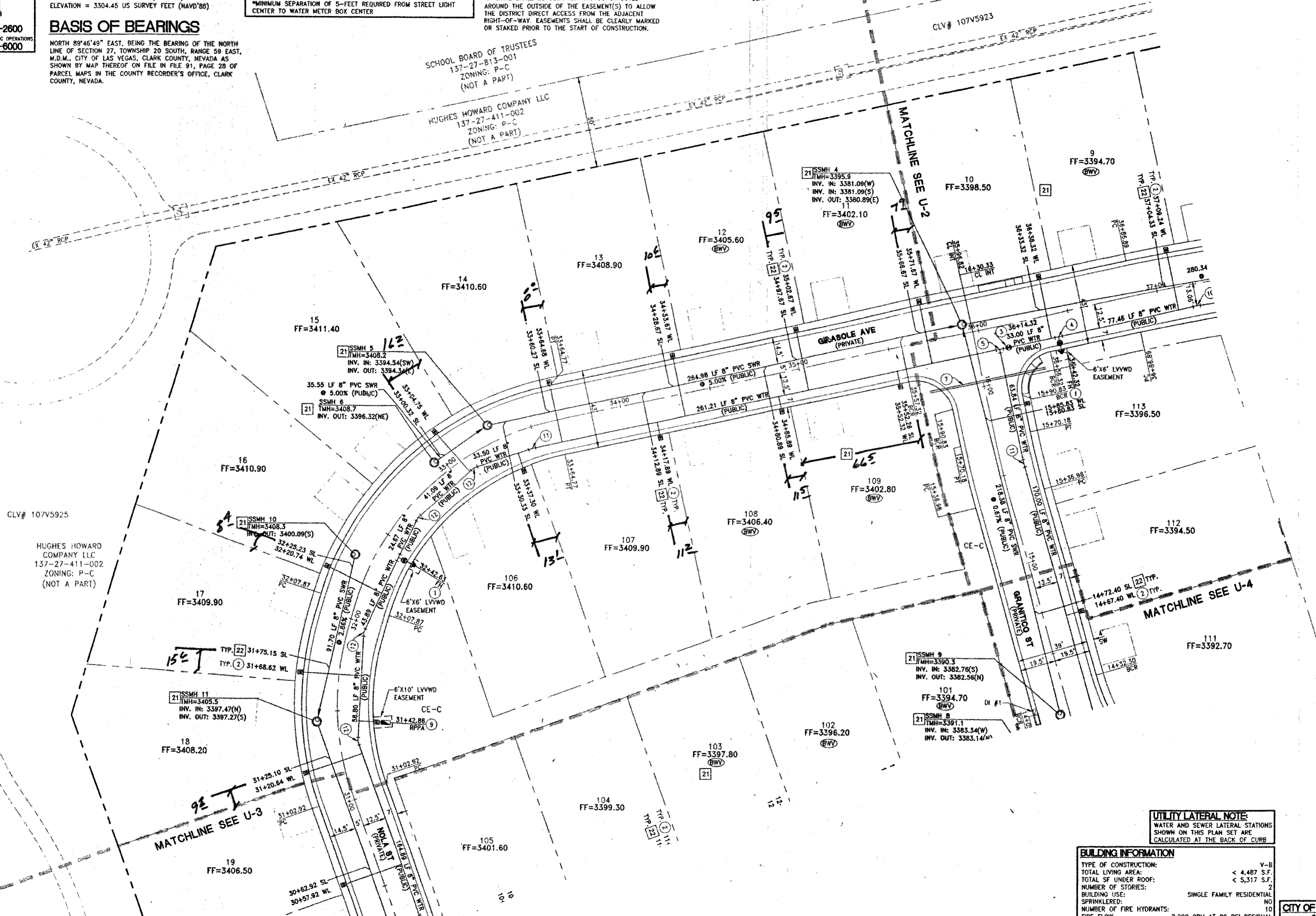
NO LOTS IN THIS PROJECT REQUIRE ONSITE PRIVATE PRESSURE REDUCING VALVES.

REDUCING PRESSURE PRINCIPLE ASSEMBLY (3) T

APPROVED REDUCING PRESSURE PRINCIPLE ASSEMBLY(S) SHALL BE INSTALLED PER THE UDACS PLATE NO. 8. NO WATER SHALL BE TAKEN FROM A SERVICE REQUIRING BACKFLOW PREVENTION UNTIL THE REDUCED PRESSURE PRINCIPLE ASSEMBLY HAS BEEN SUCCESSFULLY TESTED BY LVWD. ANY BLOCK WALL OR OTHER FENCE MATERIAL SHALL BE DESIGNED AND CONSTRUCTED AROUND THE OUTSIDE OF THE EASEMENT(S) TO ALLOW THE DISTRICT DIRECT ACCESS FROM THE ADJACENT RIGHT-OF-WAY EASEMENTS SHALL BE CLEARLY MARKED OR STAKED PRIOR TO THE START OF CONSTRUCTION.

ASBUILT

WESTERN STATES CONTRACTING, INC.
 4128 W. CHEYENNE AVE. SUITE 105
 N. LAS VEGAS, NV 89132



SCALE: 1" = 30'

WASTEWATER FLOW CALCULATION

CALCULATIONS:
 66 ERI (66 LOTS) * 250 GPD = 0.0165 MGD
 0.0165 * 3.5 = 0.05775 MGD PEAK

- WATER CONSTRUCTION NOTES**
- INSTALL FIRE HYDRANT ASSEMBLY PER UDACS PLATE NO. 39 & 40 (INCLUDES 6" GATE VALVE)
 - INSTALL 1" COPPER SERVICE LATERAL WITH 3/4" METER PER UDACS PLATE NO. 2
 - INSTALL 8" GATE VALVE PER UDACS PLATE NO. 30 & No. 39
 - INSTALL 8" X 8" TEE PER UDACS PLATE NO. 31
 - INSTALL 8" X 8" TEE PER UDACS PLATE NO. 31
 - INSTALL 8" CAP WITH 2" BLOW OFF ASSEMBLY PER UDACS PLATE NO. 36
 - INSTALL (2) 4" SCHEDULE 40 PVC IRRIGATION SLEEVES
 - INSTALL 1" COPPER SERVICE LATERAL WITH 3/4" WATER METER (FOR IRRIGATION) WITH 1" RPPA PER UDACS PLATE NO.'S 4 & 8 (1" BRASS WATERLINE BETWEEN METER AND RPPA)
 - INSTALL 1" COPPER SERVICE LATERAL WITH 5/8" WATER METER (FOR IRRIGATION) WITH 1" RPPA PER UDACS PLATE NO.'S 4 & 8 (1" BRASS WATERLINE BETWEEN METER AND RPPA)
 - INSTALL 8" 5' BEND PER UDACS PLATE NO. 31
 - INSTALL 8" 11.25' BEND PER UDACS PLATE NO. 31
 - INSTALL 8" 22.5' BEND PER UDACS PLATE NO. 31
 - INSTALL 8" 45' BEND PER UDACS PLATE NO. 31
 - INSTALL 8" 90' BEND PER UDACS PLATE NO. 31
 - REMOVE EX CAP AND BLOWOFF AND CONNECT TO EXISTING WATER MAIN PER UDACS PLATE NO. 36
 - INSTALL STEEL SLEEVE PER UDACS PLATE NO. 23

- SEWER CONSTRUCTION NOTES**
- INSTALL 48" STANDARD MANHOLE (PER DCSWCS STD. NO. SD-1A, SD-1B, SD-4, SD-3 & SD-6)
 - INSTALL 4" SEWER LATERAL (PER DCSWCS STD. NO. SD-17, SD-22 & SD-25)
 - TYPICAL LOCATION FOR SEWER LATERAL AT WATER MAIN CROSSING. ALL SEWER LATERALS MUST MAINTAIN 18" VERTICAL CLEARANCE BELOW WATER MAIN AT CROSSINGS.
 - INSTALL 8" SEWER CAP AND 1 CU-FT THRUST BLOCK @ CAP

EXISTING UTILITY NOTE

1. EXISTING UTILITIES AS SHOWN ARE FOR REFERENCE ONLY. CONTRACTOR TO FIELD VERIFY BOTH VERTICAL AND HORIZONTAL LOCATION OF ALL EXISTING UTILITIES PRIOR TO CONSTRUCTION. CONTRACTOR SHALL NOTIFY ENGINEER OF ANY DISCREPANCIES PRIOR TO CONSTRUCTION. ENGINEER ASSUMES NO RESPONSIBILITY FOR EXISTING UTILITIES SHOWN INCORRECTLY OR OTHERWISE NOT SHOWN.

CITY OF LAS VEGAS FIRE DEPARTMENT APPROVAL

APPROVAL OF THESE PLANS SHALL NOT BE CONSTRUED TO BE A PERMIT FOR, OR ANY APPROVAL OF, ANY VIOLATION OF ANY OF THE PROVISIONS OF THE STATE OR COUNTY LAWS. APPROVAL BY THE FIRE DEPARTMENT HAVING JURISDICTION IS REQUIRED PRIOR TO OBTAINING FINAL APPROVAL FROM THE LVWD.

FIRE FLOW 2,000 GPM AT 20 PSI RESIDUAL

APPROVED FOR CONSTRUCTION

LAS VEGAS VALLEY WATER DISTRICT ENGINEERING SERVICES MANAGER
 DATE: 03/17/15 PROJECT #: 123421

UTILITY LATERAL NOTE

WATER AND SEWER LATERALS SHOWN ON THIS PLAN SET ARE CALCULATED AT THE BACK OF CURB

BUILDING INFORMATION

TYPE OF CONSTRUCTION:	V-B
TOTAL LIVING AREA:	< 4,487 S.F.
TOTAL SF UNDER ROOF:	< 5,317 S.F.
NUMBER OF STORIES:	2
BUILDING USE:	SINGLE FAMILY RESIDENTIAL
SPRINKLERED:	NO
NUMBER OF FIRE HYDRANTS:	10
FIRE FLOW:	2,000 GPM AT 20 PSI RESIDUAL

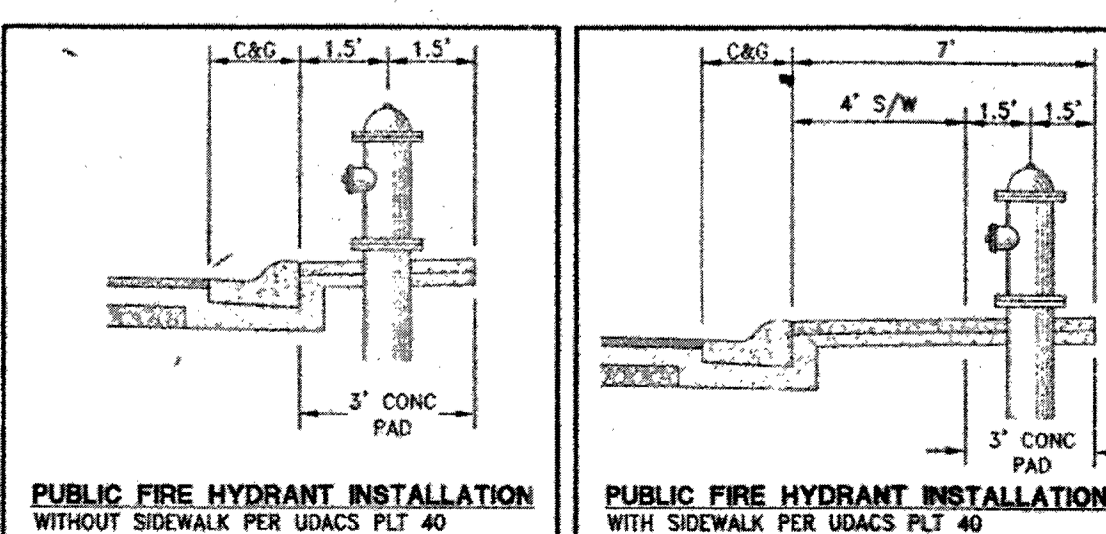
NOTES

- ADJUST WATER VALVE, BOXES TO FINISH GRADE PER UDACS PLATE NO.39. VALVES SHALL BE ACCESSIBLE AT ALL TIMES.
- ALL SEWER/STORM DRAINS CROSSING WATERLINES MUST CONFORM TO SECTION 2.22 OF UNIFORM DESIGN AND CONSTRUCTION STANDARDS FOR POTABLE WATER SYSTEMS (UDACS) FOR WATER AND STORM MAIN CROSSING AND CLEARANCES.
- ALL WATER PIPE DIMENSIONS SHOWN ARE GIVEN FROM FITTING TO FITTING AND ARE FOR REFERENCE ONLY. CONTRACTOR TO VERIFY ALL DIMENSION PRIOR TO CONSTRUCTION.

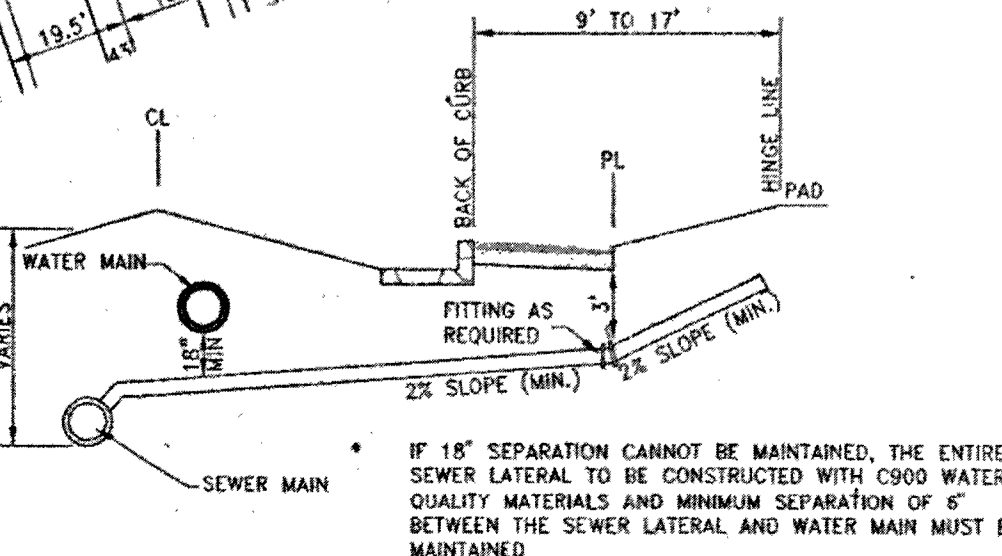
WATER MAIN JOINT DEFLECTION (PVC 4"-24")

PVC PIPE SHALL BE DEFLECTED AT THE JOINT ONLY. THE MAXIMUM ALLOWABLE DEFLECTION SHALL BE ONE (1) DEGREE PER JOINT WITH A MINIMUM RADIUS OF CURVATURE OF 1,150 FEET, PER UDACS 2.07.01 AND 2.07.02 FOR CHANGES IN DIRECTION EXCEEDING THE MAXIMUM ALLOWABLE JOINT DEFLECTION, FITTINGS SHALL BE USED.

NOTE:
 INSTALL PIPELINE MARKER BALLS IN TRENCH ABOVE EACH HORIZONTAL ELBOW FITTING PER UDACS PLATE NO. 15



- NOTES:**
- SEE DCSWCS SD-22 & SD-23 FOR SEWER LATERALS.
 - CURB SHALL BE STAMPED WITH AN "S" PER DCSWCS SD-28.
 - SEPARATION FROM WATER MAIN TO BE IN COMPLIANCE WITH UDACS SECTION 2.22.03.



TOLL SOUTH LV, LLC
 1140 TOWN CENTER DRIVE SUITE 250
 LAS VEGAS, NV 89144
 PHONE: 702-245-8000 FAX: 702-245-8970
 4325 Dean Martin Drive Suite 300, Las Vegas, NV 89103
 Phone: 702-455-6000 Fax: 702-455-6000

ASBUILT
 Engineering

ALTRA UNIT 1
 A SINGLE FAMILY RESIDENTIAL SUBDIVISION
 UTILITY PLAN (SHEET 1 OF 11)

DATE: March 15, 2015
 HORIZ. SCALE: 1"=50'
 VERT. SCALE: N/A
 DRAWN BY: DS
 CHECKED BY: AW
 PROJECT #: 1119.0018

REVISIONS:

NO.	DESCRIPTION	DATE

3/11/15
 U-1
 SHEET 17 OF 47
 CLY DRAWING NUMBER 10145024
 H# 57415