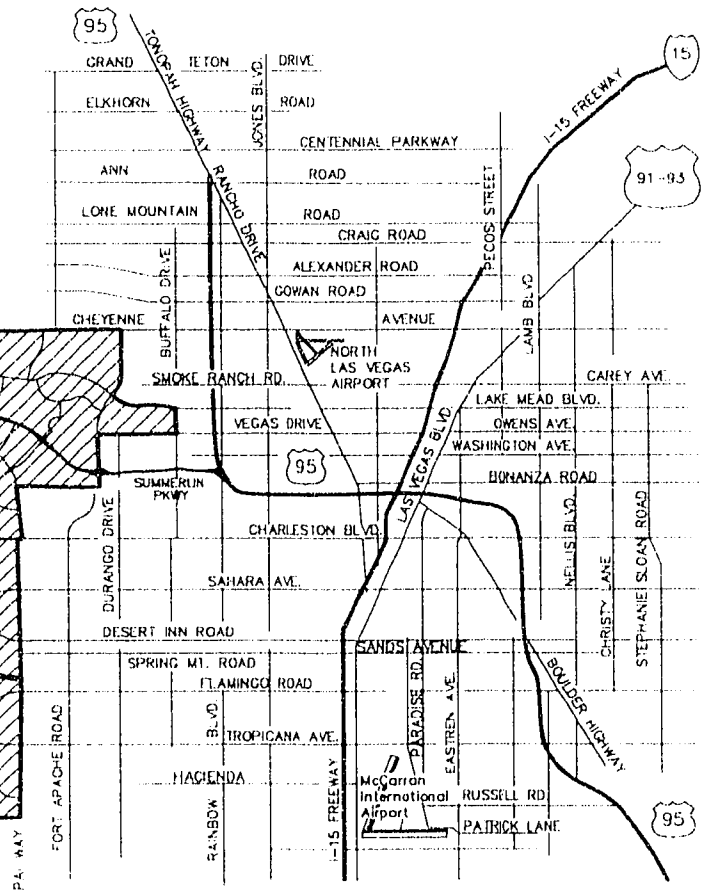
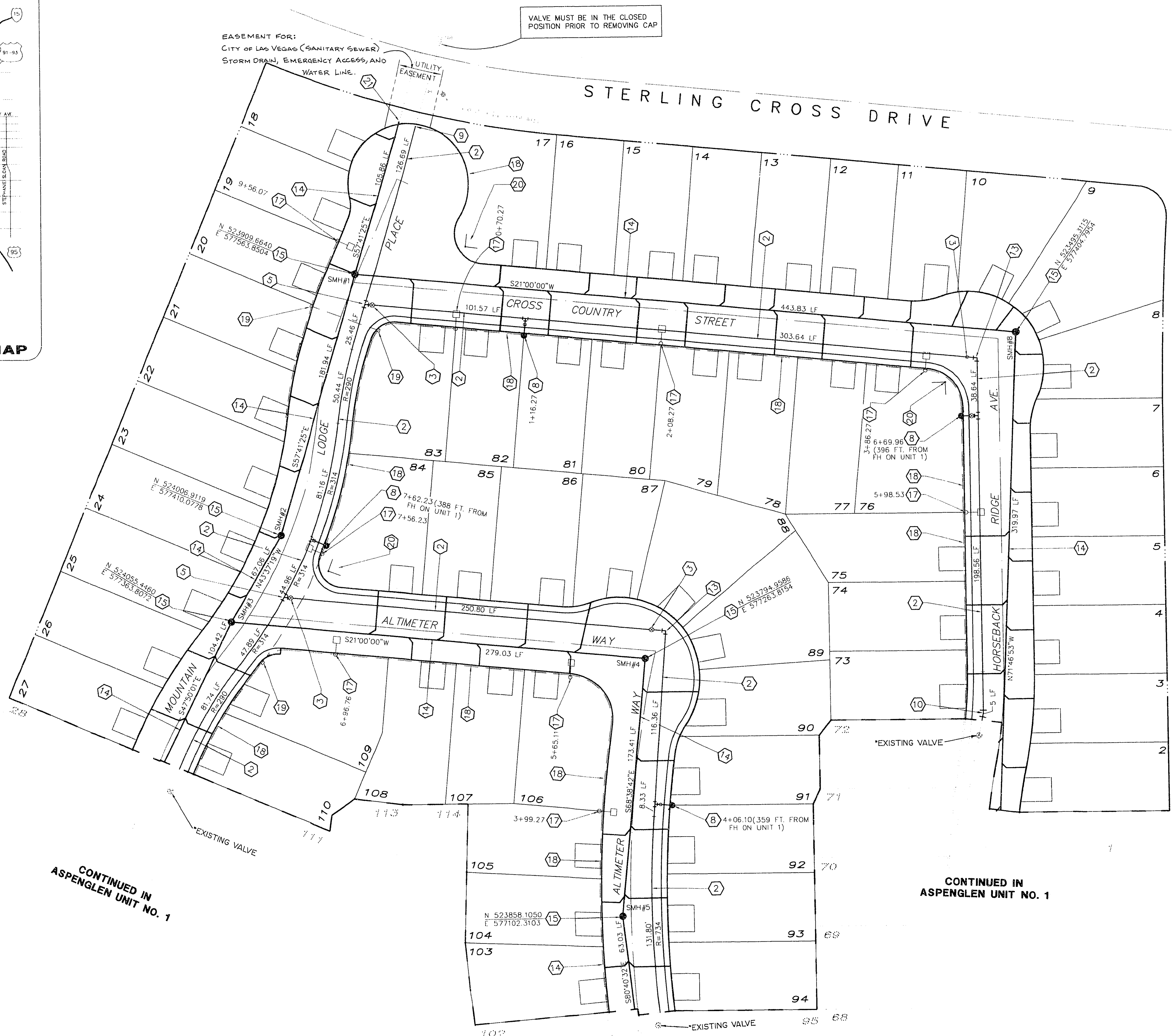
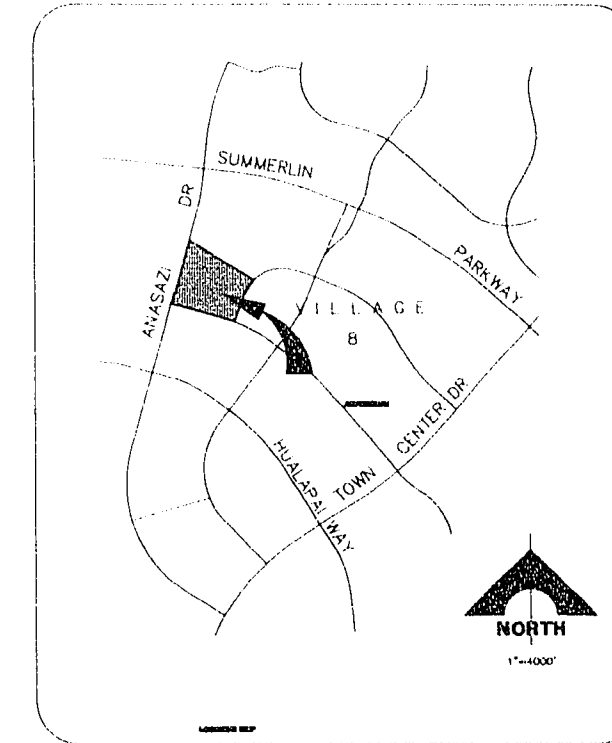


PROJECT SITE



VICINITY MAP



VALVE MUST BE IN THE CLOSED POSITION PRIOR TO REMOVING CAP

EASEMENT FOR: CITY OF LAS VEGAS (SANITARY SEWER, STORM DRAIN, EMERGENCY ACCESS, AND WATER LINE)

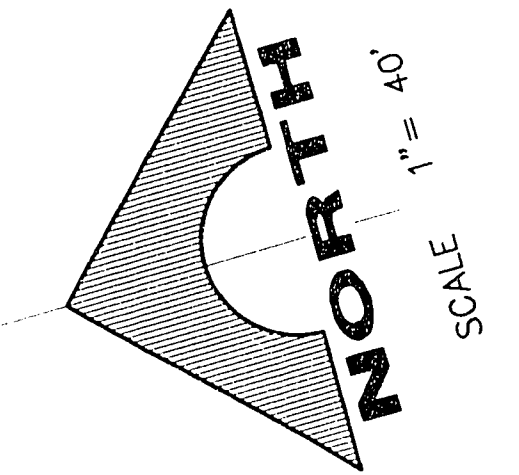
CONTINUED IN ASPENGLIN UNIT NO. 1

CONTINUED IN ASPENGLIN UNIT NO. 1

CONTINUED IN ASPENGLIN UNIT NO. 1

\*VALVE NOT REQUIRED IF UNIT NO. 2 IS CONSTRUCTED AT THE SAME TIME AS UNIT NO. 1

BANBURY CROSS



GRAPHIC SCALE

( IN FEET )  
1 inch = 40 ft.

NO.	CONSTRUCTION NOTES	NO.	CONSTRUCTION NOTES	NO.	CONSTRUCTION NOTES
1	INSTALL 6" WATER LINE	8	INSTALL FIRE HYDRANT ASSEMBLY	15	INSTALL SEWER MANHOLE
2	INSTALL 8" WATER LINE	9	JOIN EXIST. WATER	16	INSTALL SEWER PILE
3	INSTALL 8" GATE VALVE	10	INSTALL 8" 11 1/4" BEND	17	INSTALL STREET LIGHT
4	INSTALL 6" GATE VALVE	11	INSTALL 8" 22 1/2" BEND	18	INSTALL 1 1/4" STREET LIGHT CONDUIT
5	INSTALL 8" x 8" Tee	12	INSTALL 8" 45° BEND	19	INSTALL POLE BOX
6	INSTALL 8" x 6" Tee	13	INSTALL 8" 90° BEND	20	INSTALL 6" D. 3 STREET NAME SIGNS (2 PER POLE)
7	INSTALL 8" x 6" REDUCER	14	INSTALL 8" SEWER MAIN	21	REMOVE EXIST. SEWER PILE & JOIN

PROJECT OWNER: L.H. Aspenlin in Tr. Crossing Unit No. 2  
This project Water plan complies with the Las Vegas Valley Water District's technical requirements. However, this water plan is NOT APPROVED FOR CONSTRUCTION at this time and this signature does not provide or imply a water commitment.

*Paul H. Wallace* 11/13/94  
LWNO 9411

*Paul H. Wallace*  
LWNO

12-29-94  
DATE

LEWIS HOMES OF NEVADA  
ASPENGLIN IN THE CROSSING UNIT NO. 2  
UTILITY PLAN 2

SHEET  
4

OF 11 SHEETS

RECOMMENDED BY: \_\_\_\_\_  
REVISION: \_\_\_\_\_  
DATE: \_\_\_\_\_  
E. NO.: 942  
PAUL H. WALLACE  
REGISTERED PROFESSIONAL ENGINEER - STATE OF NEVADA  
No. 7941

G. C. WALLACE, INC.  
Engineering/Architecture  
1555 SOUTH RAINBOW BLVD., LAS VEGAS, NEVADA 89102

5543.9040

AG2 - 04.DWG 11/30/94

11-18-118

3074-4362-2