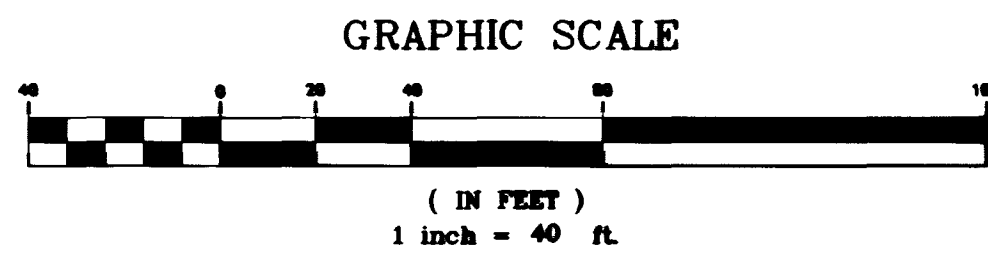


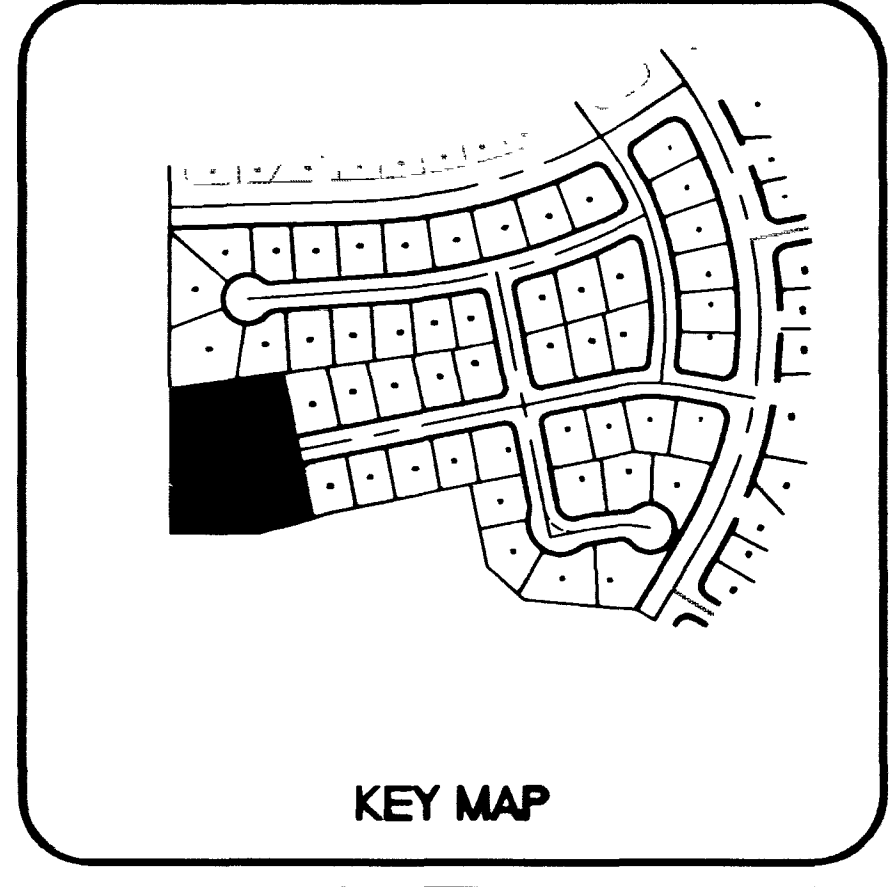
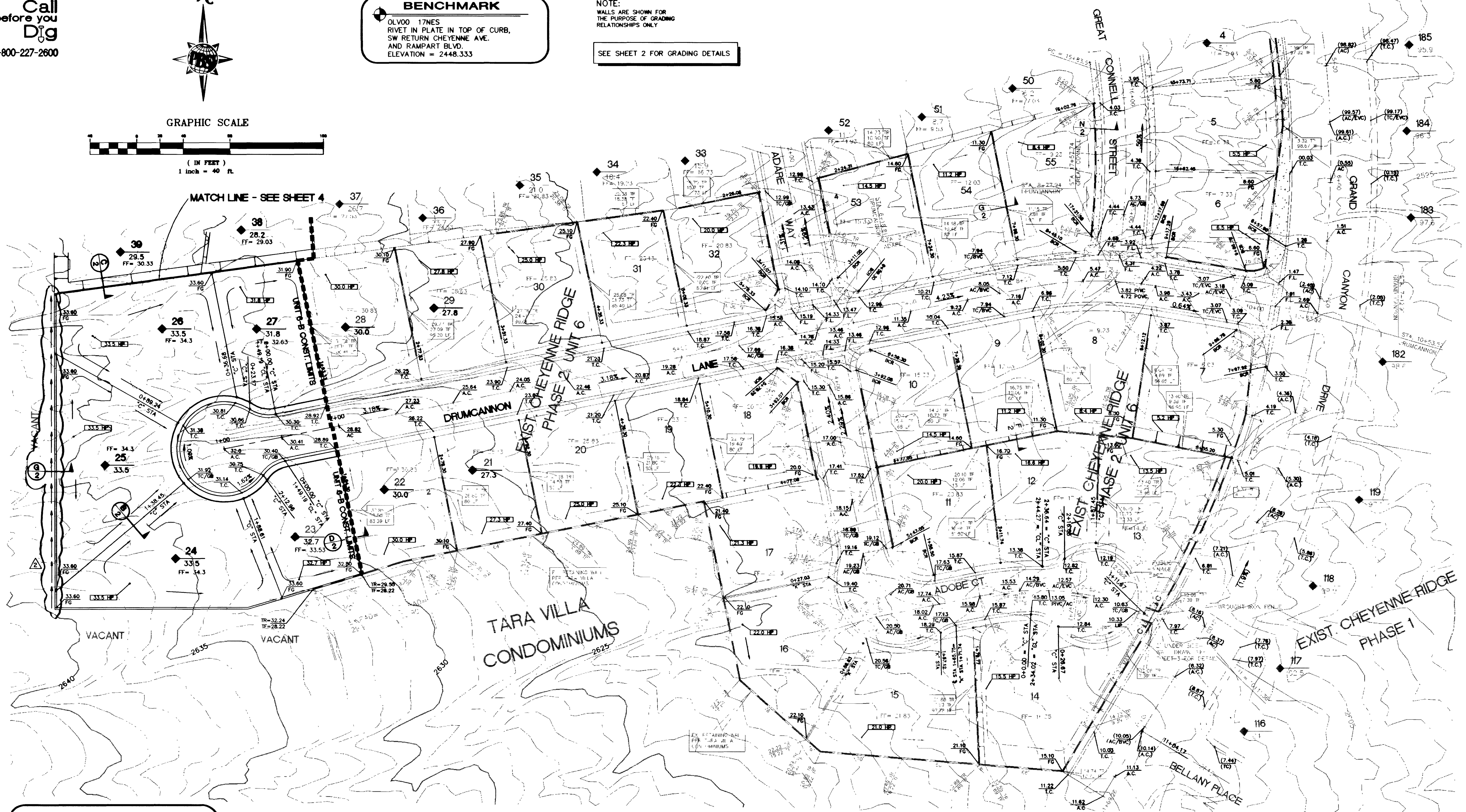
Call before you Dig
1-800-227-2600



BENCHMARK
OLV00 17NES
RIVET IN PLATE IN TOP OF CURB,
SW RETURN CHEYENNE AVE.
AND RAMPART BLVD.
ELEVATION = 2448.333

NOTE:
WALLS ARE SHOWN FOR
THE PURPOSE OF GRADING
RELATIONSHIPS ONLY

SEE SHEET 2 FOR GRADING DETAILS



INDEX OF SYMBOLS

	LOT NUMBER
	PAD GRADE
	BLOCK NUMBER
	ELEVATION DESCRIPTION
	PERCENT OF GRADE AND DIRECTION OF FLOW
	2:1 SCARP
	SITE DISTANCE TRIANGLE
	PERIMETER WALL
	RETAINING WALL

ABBREVIATIONS

T.C.	TOP OF CURB
F.L.	FLOW LINE
H.P.	HIGH POINT
TYP.	TYPICAL
A.C.	ASPHALTIC CONCRETE
EX.	EXISTING
B.C.R.	BEGINNING OF CURB RETURN
F.G.	FINISHED GRADE
C1	CURVE LABEL (SEE CURVE TABLE)
L1	LINE LABEL (SEE LINE TABLE)
B.V.C.	BEGIN VERTICAL CURVE
E.V.C.	END VERTICAL CURVE
G.B.	GRADE BREAK
T.R.	TOP OF RETAINING WALL
T.F.	TOP OF FOOTING
L.F.	LINEAL FEET

CERTIFY THAT THIS GRADING PLAN IS IN CONFORMANCE WITH THE APPROVED GRADING STUDY ON FILE AT THE CITY OF LAS VEGAS FOR THIS PROJECT.

Daniel J. Wonders
CIVIL ENGINEER
STATE OF NEVADA

Job Number	7225.695	Scale	1" = 40'
Drawn by	ILK	Checked by	D.W.K.
Sheet Number	4 OF 7	Date	AUGUST 24, 1995
File No.	695IMP	PLATE DATE	08-24-95
REVISIONS	No.	Date	Init. Appr. Date
1			
2			
3			
4			

69568-04 F1 Aug 25 11:43 1995 Terry Kyler

