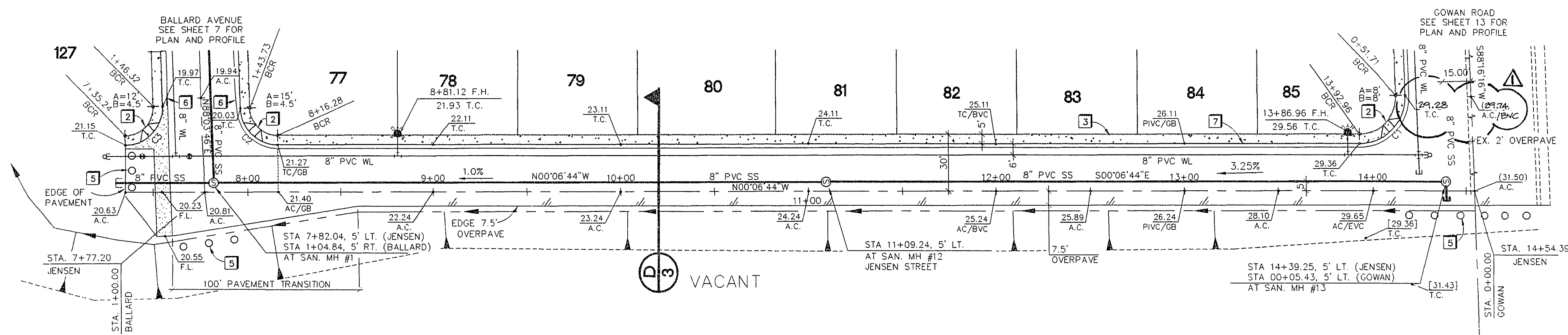
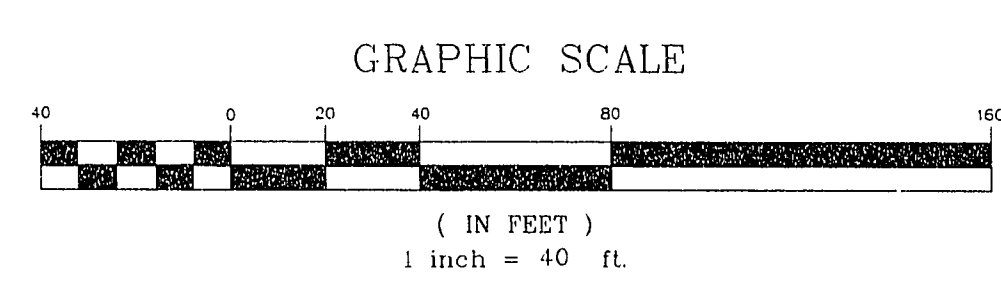
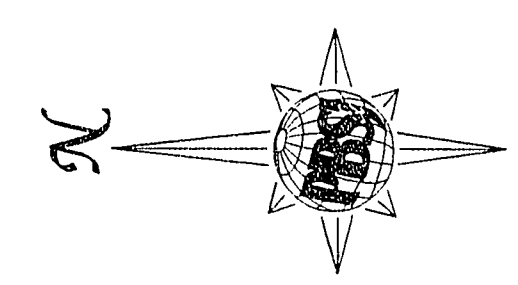


Call before you Dig
1-800-227-2600



EXISTING UNIT 6A



BENCHMARK
OLV00 17NES
RIVET IN PLATE IN TOP OF CURB,
SW RETURN CHEYENNE AVE.
AND RAMPART BLVD.
ELEVATION = 2448.333

BASIS OF BEARING
S 01°34'31"E, BEING THE WEST LINE OF THE SOUTHWEST QUARTER (SW 1/4)
OF THE SOUTHWEST QUARTER (SW 1/4) OF SECTION 8, T.20 S., R.60 E.,
M.D.M., CLARK COUNTY, NEVADA, AS SHOWN BY A MAP ON FILE IN THE
OFFICE OF THE COUNTY RECORDER IN FILE 63 OF SURVEYS, PAGE 60.

BACK OF CURB CURVE DATA

No.	RADIUS	DELTA	LENGTH	TANGENT	'A'	'B'
C1	25.00'	91°36'59"	39.98'	25.72'	8'	8'
C2	20.00'	88°10'30"	30.78'	19.37'	15'	4.5'
C3	20.00'	91°49'30"	32.05'	20.63'	12'	4.5'

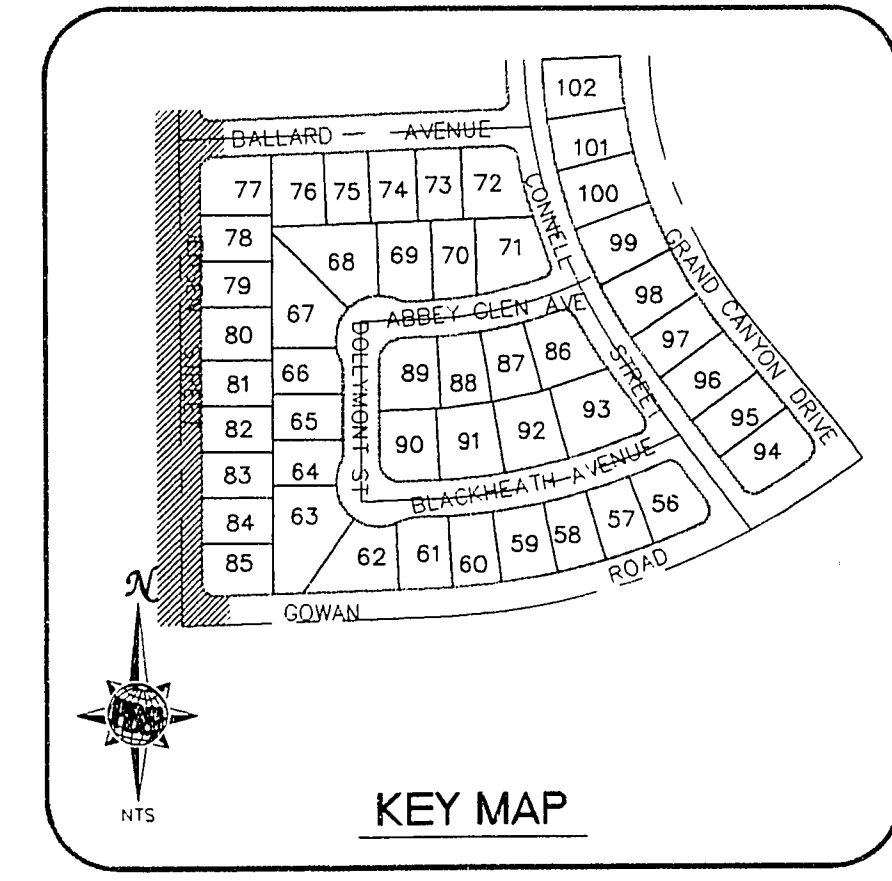
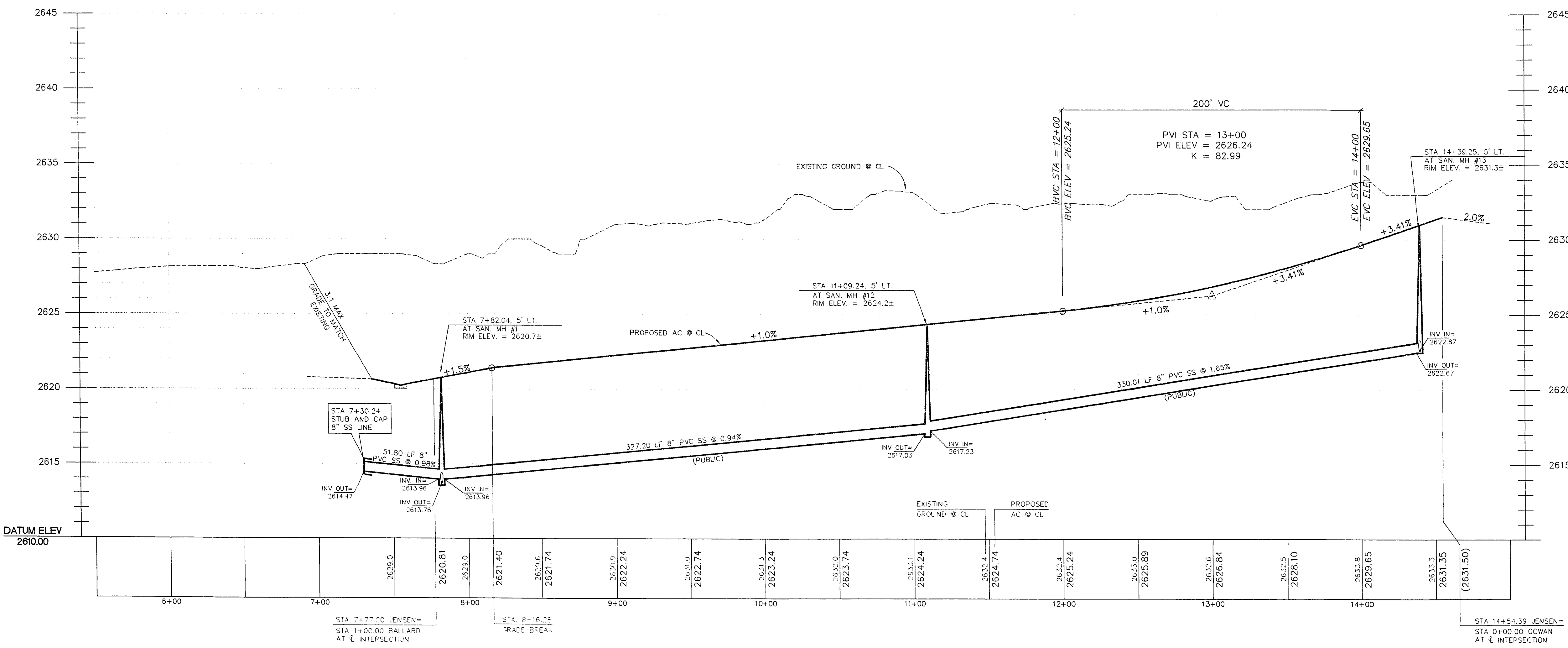
S/W RAMP DATA

No.	RADIUS	DELTA	LENGTH	TANGENT	'A'	'B'
C1	25.00'	91°36'59"	39.98'	25.72'	8'	8'
C2	20.00'	88°10'30"	30.78'	19.37'	15'	4.5'
C3	20.00'	91°49'30"	32.05'	20.63'	12'	4.5'

JENSEN STREET - PLAN VIEW
HORIZONTAL SCALE: 1" = 40'

- CONSTRUCTION NOTES**
- CONSTRUCT 8" CONCRETE VALLEY GUTTER PER CLARK COUNTY AREA STANDARD DWG. NO. 228.
 - CONSTRUCT SIDEWALK RAMP (CASE 1) PER CLARK COUNTY AREA STANDARD DWG. NO. 235, (TRANSITION LENGTHS A & B SHOWN ON PLAN, Z=3.5').
 - CONSTRUCT 5' WIDE CONCRETE SIDEWALK PER CLARK COUNTY AREA STANDARD DWG. NO. 234.
 - CONSTRUCT 30" "ROLL TYPE" CURB & GUTTER PER CLARK COUNTY AREA STANDARD DWG. NO. 217A.
 - TEMPORARY END OF ROAD MARKERS PER MUTCD SEC. 3C-4
 - 10' TRANSITION BETWEEN "L" TYPE CURB AND GUTTER AND 30" "ROLL TYPE" CURB AND GUTTER (SEE DETAIL SHEET NO. 3).
 - CONSTRUCT "L" TYPE CURB & GUTTER PER CLARK COUNTY AREA STANDARD DWG. NO. 216.

- GENERAL NOTES**
- ALL STATIONING IS CENTERLINE STATIONING UNLESS OTHERWISE NOTED.
 - SEWER LENGTHS ARE FROM CENTER OF MANHOLE TO CENTER OF MANHOLE.



10/28/14	Date
10/28/14	Appr.
REVISIONS	Date / Invt.
No.	REVISIONS
1	REVISED SHEETS AT COWAN/JENSEN
2	6600 West Charleston Blvd. Suite 400 Phoenix, AZ 85026-0244 Tel: 602.978-0244 Fax: 602.978-7758
3	POST: BUCKLEY, SCHUH & SCHENK JERNICAN
4	ENGINEERING - PLANNING - SURVEYING - CONSTRUCTION SERVICES
5	CHEYENNE RIDGE UNIT "7A" Falcon Development Corporation
6	JENSEN STREET PLAN & PROFILE UNIT "7A"
7	Scale 1" = 40'
8	Drawn by JLL/JH
9	Checked by ARZ
10	Date SEPT. 5, 1995
11	Job Number 51695.11
12	Sheet Number 6 OF 14
13	File No. 695IMP
14	PROJECT NO. 09/07/95

Daniel J. Wonders
DANIEL J. WONDERS CIVIL
ENGINEER'S SEAL

JENSEN STREET - PLAN VIEW
HORIZONTAL SCALE: 1" = 40'
VERTICAL SCALE: 1" = 4'