

Memorandum

Department of Public Works
City Engineer Division
Survey Section
333 North Rancho Dr., 8th Floor
Las Vegas, Nevada 89106

Phone (702) 229-6217
Fax (702) 804-8582

To: Michael Cunningham, Manager
Building and Safety Department

From: Alan R. Riecki, PLS
City Surveyor

C: Jerry A. Cook, PLS
MSG Surveying

Tim Parks, P.E., Engineering Project Manager
Sanitary Sewers Section, Engineering Planning

Date: October 18, 2016

Re: Sanitary Sewer Final Location Map
CENTENNIAL AND HUALAPAI
(Drawing No. 107Y5007, L-Civil No. 55125)

The Survey Section has reviewed the Final Location Map and as far as our jurisdiction of this project is concerned, we find that the map is:

Acceptable: October 18, 2016

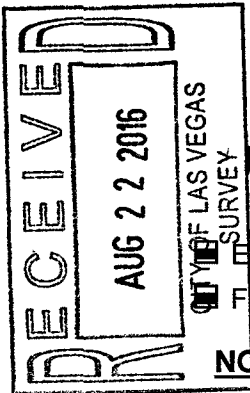


Signature

City Surveyor
Title

Public Works/Survey
Department/Division

ARR/OS:js



CITY OF LAS VEGAS
BUILDING AND SAFETY DEPARTMENT

OFFSITE INSPECTION & TESTING
333 NORTH RANCHO DRIVE
LAS VEGAS, NV 89106
PHONE: (702) 229-6337
FAX: (702) 631-3000

DEVELOPER'S SUBMITTAL OF LOCATION COORDINATES

Sewer Storm Drain

Electronic Comma Delineated File

Final Location Map (2 copies each for either sewer OR storm drain)

NOTE: THE TOP PART OF THIS FORM MUST BE FILLED OUT IN ITS ENTIRETY

PROJECT NAME: CENTENNIAL AND HUALAPAI UNIT: N/A PHASE: N/A

PROJECT LOCATION: CENTENNIAL AND HUALAPAI

CLV PLAN #: 107Y5007 CLV PROJECT # 55125 SHEET NO. (S): 5

OF MANHOLES 6 PUB. SEWER/STORM DRAIN LIN. FT. 6248.7' # OF PRIVATE LATERALS 84

DEVELOPER: LENNAR HOMES PHONE: 702-458-7700 FAX: 702-458-7708

SURVEY CO.: MSG SURVEYING PHONE: 702-932-2965 FAX: 702-932-5599

CONTRACTOR: PACIFIC PIPELINE PHONE: 702-750-0533 FAX: 702-750-1364

CONTRACTOR'S SUPERVISOR NAME: LUIS FRANCO MOBILE: 702-339-0715

DATE OF REQUEST: 6-30-16

**SUBMIT DIRECTLY TO THE OFFICE OF THE CITY
SURVEYOR LOCATED ON THE 8th FLOOR OF THE
DSC / 333 N Rancho, 89106**

Please get a stamped copy of this form for your records.

CITY USE ONLY

DATE AND INITIALS / RECEIVED BY THE CITY SURVEYOR _____

ACCEPTABLE BY CITY SURVEYOR DATE: 10/18/16 NOT ACCEPTABLE BY CITY SURVEYOR DATE _____

CLV SURVEYOR'S SIGNATURE: [Signature] DATE: 10/18/16

THE CITY OF LAS VEGAS RECOMMENDS THAT ALL DEFICIENCIES NOTED ON THE ATTACHED SURVEY REPORT BE CORRECTED PRIOR TO THE FINAL ACCEPTANCE.

Notes: _____

ROUTING:

- > Once "ACCEPTABLE"; SURVEY to forward a copy of this form to O.I.T. for the file.
- > Final Location Maps to be forwarded to and retained by Flood Control or Sanitation Engineer respectively.



City of Las Vegas
Department of Public Works
Survey Section

REVIEW CHECKLIST
SANITARY SEWER
FINAL LOCATION MAP

JOB NUMBER H55125 SS2
PROJECT NAME CENTENNIAL AND HUALAPAI
WORK AUTH. NO. P28000
SUBMITTED BY MSG Surveying
PROJECT TYPE CIP Land Dev Street Rehab
DATE 10/18/16
REVIEWED BY D. SANTANA

REVIEW DETERMINATION

- Approved
 Not Acceptable

TO BE RE-SUBMITTED

- Two bond copies (no mylar)
 Electronic media with comma-separated coordinate file

REVIEW ITEM	OK	SEE R/L	N/A	COMMENTS
Submittal Contents				
Two bond copies (no mylar)	<input checked="" type="checkbox"/>	<input type="checkbox"/>	<input type="checkbox"/>	
Electronic media containing comma-separated coordinate file	<input checked="" type="checkbox"/>	<input type="checkbox"/>	<input type="checkbox"/>	
General Map Contents				
Sheet size 24" x 36"	<input type="checkbox"/>	<input type="checkbox"/>	<input type="checkbox"/>	
Sheet number and number of sheets	<input type="checkbox"/>	<input type="checkbox"/>	<input type="checkbox"/>	
North arrow (pointing up, left or right)	<input type="checkbox"/>	<input type="checkbox"/>	<input type="checkbox"/>	
Scale (written & graphic, correctly shown, appropriate scale used)	<input type="checkbox"/>	<input type="checkbox"/>	<input type="checkbox"/>	
Lettering legibility (minimum text size 0.08")	<input type="checkbox"/>	<input type="checkbox"/>	<input type="checkbox"/>	
Map title shown ("Sanitary Sewer Final Location Map")	<input type="checkbox"/>	<input type="checkbox"/>	<input type="checkbox"/>	
CLV project name shown	<input type="checkbox"/>	<input type="checkbox"/>	<input type="checkbox"/>	
CLV Hansen No. shown	<input type="checkbox"/>	<input type="checkbox"/>	<input type="checkbox"/>	
CLV Drawing No. shown	<input type="checkbox"/>	<input type="checkbox"/>	<input type="checkbox"/>	
Preparer's company name and contact information shown	<input type="checkbox"/>	<input type="checkbox"/>	<input type="checkbox"/>	
Legend (all linetypes and symbols defined)	<input type="checkbox"/>	<input type="checkbox"/>	<input type="checkbox"/>	
Non-standard abbreviations defined	<input type="checkbox"/>	<input type="checkbox"/>	<input type="checkbox"/>	
Distances, coordinates and elevations labeled using decimal feet	<input type="checkbox"/>	<input type="checkbox"/>	<input type="checkbox"/>	
Approximate limits of streets shown (improvements or right-of-way)	<input type="checkbox"/>	<input type="checkbox"/>	<input type="checkbox"/>	
Street names labeled (identified as public or private)	<input checked="" type="checkbox"/>	<input type="checkbox"/>	<input type="checkbox"/>	

REVIEW CHECKLIST – SANITARY SEWER FINAL LOCATION MAP

REVIEW ITEM	OK	SEE R/L	N/A	COMMENTS
Sanitary Sewer Improvements Data				
*NOTE As of December 1, 2015 manhole cover locations are no longer required.				
Manhole Barrel/Base: (measured horizontally at centerline of structure barrel/base, vertical location does not apply)	<input checked="" type="checkbox"/>	<input type="checkbox"/>	<input type="checkbox"/>	
Vaults and Junction Structures: (measured horizontally at all outer extents of structure, vertically at top of structure)	<input type="checkbox"/>	<input type="checkbox"/>	<input checked="" type="checkbox"/>	
Lateral/Main/Interceptor Pipes: locate at all connections to other pipes and structures, all horizontal and vertical deflections, points of termination (stubs), point at which pipe exits the public right-of-way or easement (measured horizontally at centerline of pipe, vertically at top of pipe)	<input checked="" type="checkbox"/>	<input type="checkbox"/>	<input type="checkbox"/>	
*NOTE All pipe connections to manholes and other structures should be located at outside face of structure before backfilling due to accuracy limitations of pipe measurements from the structure's surface access point.				
Coordinate Information				
Data acquisition completion date indicated	<input type="checkbox"/>	<input type="checkbox"/>	<input type="checkbox"/>	
Coordinate system indicated (only CLV approved coordinate systems are to be used)	<input type="checkbox"/>	<input type="checkbox"/>	<input type="checkbox"/>	
Horizontal datum, datum adjustment, and epoch date indicated (only CLV approved datums are to be used)	<input type="checkbox"/>	<input type="checkbox"/>	<input type="checkbox"/>	
Benchmark ID, description, elevation indicated	<input type="checkbox"/>	<input type="checkbox"/>	<input type="checkbox"/>	
Statement of positional accuracy per the tolerances indicated below	<input type="checkbox"/>	<input type="checkbox"/>	<input type="checkbox"/>	
*NOTE For all projects with improvement plans approved prior to March 1, 2015 coordinates provided must be accurate to within ±0.5 feet horizontally and vertically. For all projects with improvement plans approved after March 1, 2015 coordinates provided must be accurate to within ±0.3 feet horizontally and vertically.				
Coordinate accuracy QA/QC (when available)	<input type="checkbox"/>	<input type="checkbox"/>	<input checked="" type="checkbox"/>	

ADDITIONAL COMMENTS

CENTENNIAL AND HUALAPAI

SANITARY SEWER FINAL LOCATION MAP

CITY OF LAS VEGAS
STATE OF NEVADA

DEVELOPER	OWNER	ENGINEER
LENNAR HOMES	GREYSTONE NEVADA LLC	THOMASON CONSULTING ENGINEERS
2490 PASEO VERDE PARKWAY, SUITE 120 HENDERSON, NV, 89074 PHONE: (702) 458-7700 FAX: (702) 458-7708 CONTACT: PAULO CHAVEZ	2490 PASEO VERDE PARKWAY, SUITE 120 HENDERSON, NV, 89074 PHONE: (702) 458-7700 FAX: (702) 458-7708 CONTACT: PAULO CHAVEZ	7080 LA CIENEGA STREET, SUITE 200 LAS VEGAS, NEVADA 89119 PHONE: (702) 932-6125 FAX: (702) 932-6129 CONTACT: JOHN B. McAVOY

LEGEND

---	PROPERTY LINE / RIGHT-OF-WAY
---	BACK OF CURB
---	CENTERLINE OF STREET
---	SEWER LINE
10	LOT NUMBER
(XXX)	ASBUILT SEWER LOCATION POINT NUMBER (SEE CHARTS SHEET 5)

ABBREVIATIONS

SS	SANITARY SEWER
SSMH	SANITARY SEWER MANHOLE
LAT	LATERAL
VB	VERTICAL BEND
CL	CENTERLINE

BENCHMARK

CITY OF LAS VEGAS BENCHMARK 6LV99 24SES
A RIVET AND PLATE IN THE TOP OF CURB AT
THE NORTHWEST CORNER OF CENTENNIAL
PARKWAY AND HUALAPAI WAY.

ELEVATION=844.924 METERS (NAVD'88)
ELEVATION=2772.06 US SURVEY FEET
(NAVD'88)

BASIS OF BEARING

GRID NORTH AS DEFINED BY THE CENTRAL
MERIDIAN OF THE NEVADA COORDINATE
SYSTEM, EAST ZONE, NORTH AMERICAN DATUM
OF 1983, SAID MERIDIAN BEING COINCIDENT
WITH 115°35' WEST OF THE GREENWICH
MERIDIAN.

COORDINATE SYSTEM

NEVADA STATE PLANE COORDINATE SYSTEM,
EAST ZONE 2701

DATUM

NAD 1983 (2011) EPOCH 2010.0

NOTES:

ALL PIPE ELEVATIONS REFLECT TOP OF PIPE.
MANHOLE LID ELEVATIONS TAKEN AT RIM.
SS MAIN@LAT IS CENTERLINE INTERSECTION OF
MAIN LINE AND LATERAL

FIELD WORK COMPLETED 03-14-16

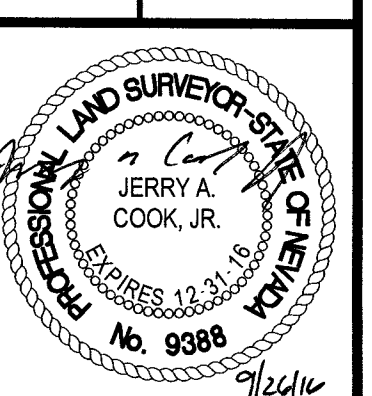
ALL COORDINATES ACCURATE WITHIN +/- 0.3
FEET HORIZONTALLY AND VERTICALLY.

SCALE (H):	40
SCALE (V):	N/A
DRAWN BY:	Z. BUSCH
CHECKED BY:	J. COOK
SEC 30, T 19 S, R 60 E, MDM	

SANITARY SEWER FINAL LOCATION MAP
CENTENNIAL / HUALAPAI
LENNAR HOMES
CLARK COUNTY
NEVADA
CITY OF LAS VEGAS

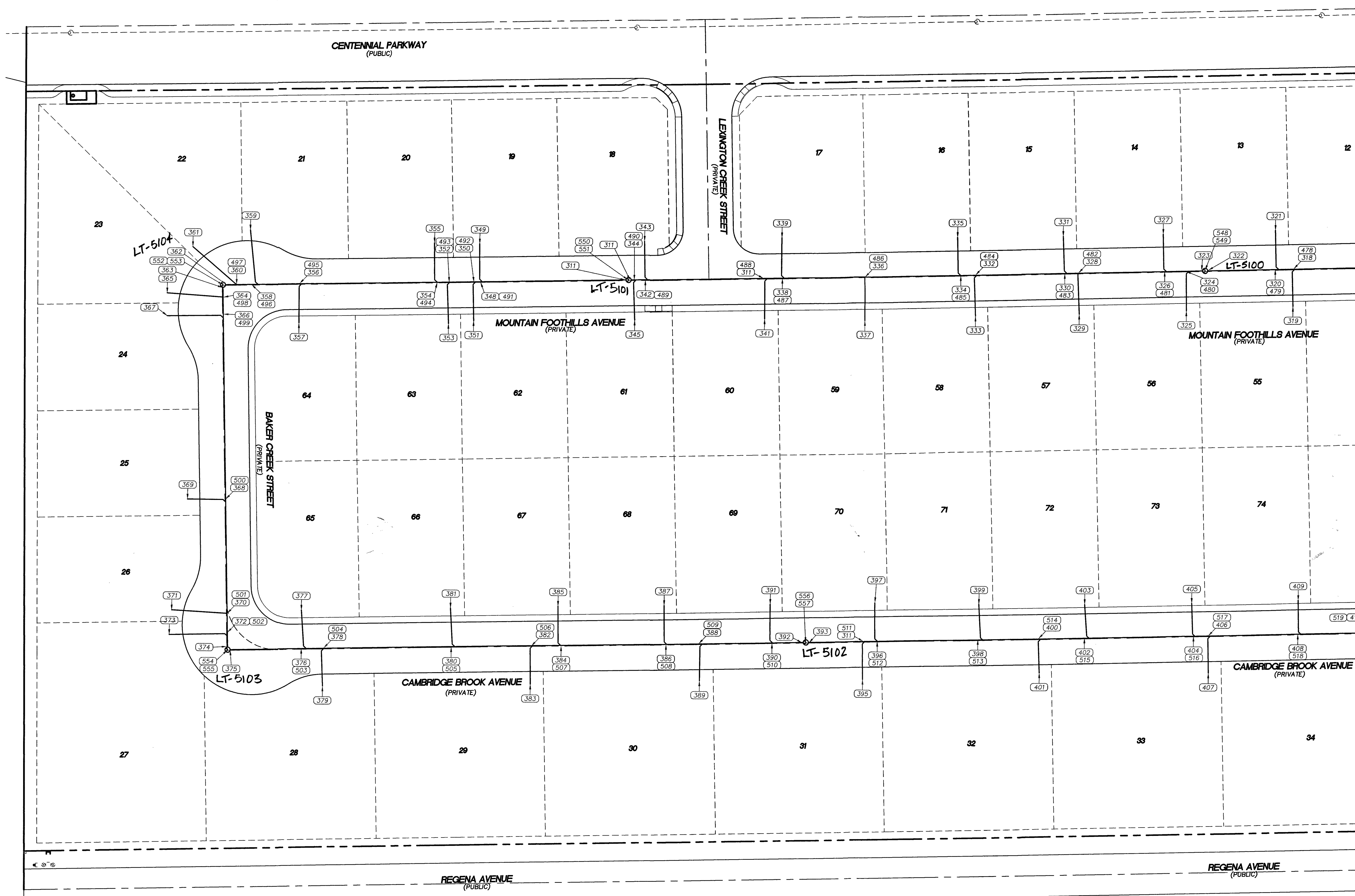
MSG Surveying

7080 LA CIENEGA STREET, SUITE 200
LAS VEGAS, NEVADA 89119
PHONE: (702) 932-2965
FAX: (702) 932-5599
HTTP://WWW.MSGSURVEYING.COM



DRAWING NAME	CENTENNIAL/HUAL.
JOB NUMBER	001-13-032
SHEET	1 OF 5

CLV DRAWING #- 107Y5007
HANSEN #- 55125



LEGEND

--- PROPERTY LINE / RIGHT-OF-WAY
 --- BACK OF CURB
 --- CENTERLINE OF STREET
 --- SEWER LINE
 --- LOT NUMBER

10 (XXX) ASBUILT SEWER LOCATION POINT NUMBER (SEE CHARTS SHEET 5)

ABBREVIATIONS

SS --- SANITARY SEWER
 SSMH --- SANITARY SEWER MANHOLE
 LAT --- LATERAL
 VB --- VERTICAL BEND
 CL --- CENTERLINE

BENCHMARK
 CITY OF LAS VEGAS BENCHMARK 6LV99 24SES
 A RIVET AND PLATE IN THE TOP OF CURB AT THE NORTHWEST CORNER OF CENTENNIAL PARKWAY AND HUALAPAI WAY.

ELEVATION=844.924 METERS (NAVD'88)
 ELEVATION=2772.06 US SURVEY FEET (NAVD'88)

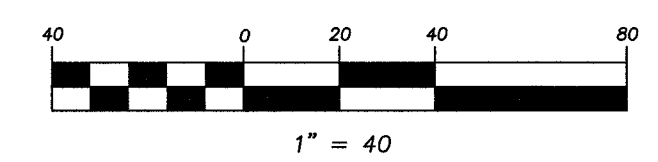
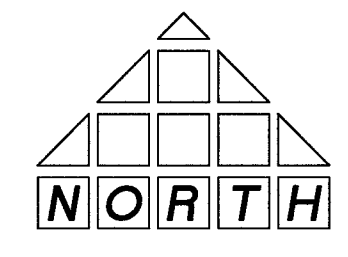
BASIS OF BEARING
 GRID NORTH AS DEFINED BY THE CENTRAL MERIDIAN OF THE NEVADA COORDINATE SYSTEM, EAST ZONE, NORTH AMERICAN DATUM OF 1983; SAID MERIDIAN BEING COINCIDENT WITH 115°35' WEST OF THE GREENWICH MERIDIAN.

COORDINATE SYSTEM
 NEVADA STATE PLANE COORDINATE SYSTEM, EAST ZONE 2701

DATUM
 NAD 1983 (2011) EPOCH 2010.0

NOTES:
 ALL PIPE ELEVATIONS REFLECT TOP OF PIPE.
 MANHOLE LID ELEVATIONS TAKEN AT RIM.
 SS MAIN@LAT IS CENTERLINE INTERSECTION OF MAIN LINE AND LATERAL
 FIELD WORK COMPLETED 03-14-16
 ALL COORDINATES ACCURATE WITHIN +/- 0.3 FEET HORIZONTALLY AND VERTICALLY.

FOR CONTINUATION SEE SHEET 3

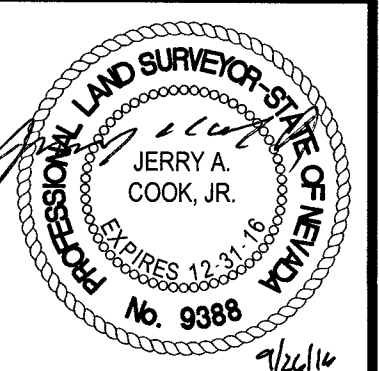


DATE	
BY	
NO.	
SCALE (H):	40
SCALE (V):	N/A
DRAWN BY:	Z. BUSCH
CHECKED BY:	J. COOK
SEC. 30, T. 19 S, R. 60 E, 100M	

SANITARY SEWER FINAL LOCATION MAP
 CENTENNIAL / HUALAPAI
 LENNAR HOMES
 CLARK COUNTY
 CITY OF LAS VEGAS
 NEVADA

MS&S Surveying

7080 LA CIENEGA STREET, SUITE 200
 LAS VEGAS, NEVADA 89119
 PHONE: (702) 832-2885
 FAX: (702) 832-6594
 HTTP://WWW.MSSSURVEYING.COM



DRAWING NAME	CENTENNIAL / HUAL.
JOB NUMBER	001-13-032
SHEET	2 OF 5

CLV DRAWING #- 107Y5007
 HANSEN #- 55125

POINT#	NORTHING	EASTING	ELEVATION	DESCRIPTION
260	26802189.74	735795.331	2734.675	SSMH SOUTH OUT
261	26802192.35	735792.688	2734.96	SSMH WEST IN
262	26802194.66	735794.911	2734.99	SSMH NORTH IN
263	26802207.52	735794.879	2735.261	SS MAIN @ LAT
264	26802207.25	735835.422	2736.407	SS LAT
265	26802226.4	735794.956	2737.76	SS MAIN @ LAT
266	26802226.23	735835.457	2737.76	SS LAT
267	26802308.39	735795.169	2737.281	SS MAIN @ LAT
268	26802308.32	735818.756	2738.922	SS LAT
269	26802448.43	735795.814	2740.104	SS MAIN @ LAT
270	26802448.4	735832.833	2742.867	SS LAT
271	26802478.17	735796.299	2740.833	SS MAIN @ LAT
272	26802478.54	735834.375	2743.466	SS LAT
273	26802482.83	735796.523	2741.1	SSMH SOUTH OUT
274	26802485.32	735793.988	2741.35	SSMH WEST IN
275	26802485.77	735763.137	2742.467	SS MAIN @ LAT
276	26802528.34	735762.319	2744.376	SS LAT
277	26802485.95	735734.471	2743.491	SS MAIN @ LAT
278	26802455.31	735735.503	2744.674	SS LAT
279	26802486.35	735681.254	2745.474	SS MAIN @ LAT
280	26802515.42	735679.899	2748.098	SS LAT
281	26802486.33	735670.293	2745.863	SS MAIN @ LAT
282	26802455.46	735669.956	2747.388	SS LAT
283	26802486.64	735596.512	2748.564	SS MAIN @ LAT
284	26802456.44	735594.324	2749.413	SS LAT
285	26802486.68	735592.61	2748.705	SS MAIN @ LAT
286	26802515.47	735592.907	2750.671	SS LAT
287	26802486.97	735515.051	2751.584	SS MAIN @ LAT
288	26802456.04	735512.071	2753.108	SS LAT
289	26802486.3	735514.527	2751.529	SS MAIN @ LAT
290	26802487.27	735435.181	2754.728	SS MAIN @ LAT
291	26802456.21	735433.977	2755.983	SS LAT
292	26802487.35	735431.967	2754.663	SS MAIN @ LAT
293	26802516.9	735431.465	2756.914	SS LAT
294	26802488.04	735347.601	2757.88	SSMH EAST OUT
295	26802487.9	735342.764	2758.46	SSMH WEST IN
296	26802488.85	735311.907	2759.315	SS MAIN @ LAT
297	26802460.36	735309.375	2763.214	SS LAT
298	26802489.27	735299.244	2759.865	SS MAIN @ LAT
299	26802516.13	735300.806	2764.866	SS LAT
300	26802492.18	735215.522	2763.306	SSMH EAST OUT
301	26802492.26	735210.515	2763.543	SSMH WEST IN
302	26802491.91	735194.791	2763.808	SS MAIN @ LAT
303	26802460.42	735194.478	2765.892	SS LAT
304	26802491.86	735192.324	2763.878	SS MAIN @ LAT
305	26802521.54	735191.589	2764.063	SS LAT
306	26802489.51	735074.011	2765.981	SS MAIN @ LAT
307	26802459.11	735073.229	2768.572	SS LAT
308	26802489.33	735061.866	2766.155	SS MAIN @ LAT
309	26802517.43	735061.306	2766.936	SS LAT
310	26802489.17	735052.766	2766.281	SS MAIN @ LAT
311	26802458.16	735053.294	2768.734	SS LAT
312	26802489.02	735041.094	2766.443	SS MAIN @ LAT
313	26802518.36	735040.408	2767.463	SS LAT
314	26802487.82	734970.903	2767.633	SS MAIN @ LAT
315	26802457.22	734970.6	2769.242	SS LAT
316	26802487.48	734952.846	2767.929	SS MAIN @ LAT
317	26802516.43	734951.629	2768.843	SS LAT
318	26802486.36	734888.812	2769.018	SS MAIN @ LAT
319	26802457.49	734888.367	2771.491	SS LAT
320	26802486.17	734874.643	2769.25	SS MAIN @ LAT
321	26802516.45	734874.829	2770.292	SS LAT
322	26802485.4	734822.37	2770.122	SSMH EAST OUT
323	26802485.31	734817.411	2770.367	SSMH WEST IN
324	26802485.1	734805.049	2771.009	SS MAIN @ LAT
325	26802453.96	734805.498	2773.701	SS LAT
326	26802484.76	734788.601	2771.621	SS MAIN @ LAT
327	26802513.43	734787.503	2772.517	SS LAT
328	26802483.36	734721.513	2774.614	SS MAIN @ LAT
329	26802451.51	734722.163	2776.459	SS LAT
330	26802483.12	734710.928	2775.134	SS MAIN @ LAT
331	26802511.91	734709.749	2776.195	SS LAT
332	26802481.93	734641.666	2778.223	SS MAIN @ LAT
333	26802450.08	734641.601	2779.299	SS LAT
334	26802481.57	734625.45	2778.802	SS MAIN @ LAT
335	26802511.22	734627.746	2778.83	SS LAT
336	26802480.12	734555.202	2782.173	SS MAIN @ LAT
337	26802446.63	734555.219	2784.638	SS LAT
338	26802479.12	734489.578	2784.997	SS MAIN @ LAT
339	26802510.58	734489.102	2787.43	SS LAT
340	26802478.8	734474.962	2785.631	SS MAIN @ LAT
341	26802447.49	734475.774	2788.753	SS LAT
342	26802477.07	734383.21	2789.76	SS MAIN @ LAT
343	26802507.03	734382.451	2790.738	SS LAT
344	26802476.89	734374.544	2790.158	SS MAIN @ LAT
345	26802445.85	734374.888	2791.344	SS LAT
346	26802476.82	734371.887	2790.28	SSMH EAST OUT
347	26802476.90	734367.438	2790.38	SSMH WEST IN
348	26802474.64	734254.555	2791.607	SS MAIN @ LAT
349	26802504.2	734253.802	2792.975	SS LAT

POINT#	NORTHING	EASTING	ELEVATION	DESCRIPTION
350	26802474.49	734249.43	2791.623	SS MAIN @ LAT
351	26802444.61	734249.353	2793.551	SS LAT
352	26802474.31	734230.267	2791.822	SS MAIN @ LAT
353	26802442.34	734229.834	2793.781	SS LAT
354	26802474.15	734220.822	2791.951	SS MAIN @ LAT
355	26802504.69	734218.681	2792.51	SS LAT
356	26802472.51	734113.136	2792.996	SS MAIN @ LAT
357	26802442.1	734112.873	2794.229	SS LAT
358	26802471.87	734075.987	2793.405	SS MAIN @ LAT
359	26802514.01	734074.885	2794.13	SS LAT
360	26802471.7	734064.441	2793.528	SS MAIN @ LAT
361	26802500.61	734030.283	2794.635	SS LAT
362	26802471.49	734056.341	2793.632	SSMH EAST OUT
363	26802468.99	734053.83	2793.525	SSMH SOUTH OUT
364	26802461.52	734054.003	2793.349	SS MAIN @ LAT
365	26802464.61	734010.545	2794.127	SS LAT
366	26802448.44	734054.183	2793.021	SS MAIN @ LAT
367	26802446.88	734010.653	2793.692	SS LAT
368	26802304.96	734056.741	2790.027	SS MAIN @ LAT
369	26802304.97	734027.122	2790.581	SS LAT
370	26802215.89	734058.329	2788.112	SS MAIN @ LAT
371	26802218.59	734015.26	2788.875	SS LAT
372	26802201.02	734058.54	2787.846	SS MAIN @ LAT
373	26802199.37	734013.408	2788.524	SS LAT
374	26802190.27	734058.401	2787.671	SSMH NORTH IN
375	26802187.6	734060.848	2787.344	SSMH EAST OUT
376	26802189.01	734115.992	2785.883	SS MAIN @ LAT
377	26802218.9	734115.96	2786.29	SS LAT
378	26802189.21	734133.293	2785.352	SS MAIN @ LAT
379	26802159.95	734132.621	2786.011	SS LAT
380	26802190.72	734233.027	2782.661	SS MAIN @ LAT
381	26802221.13	734232.349	2783.293	SS LAT
382	26802191.65	734295.286	2781.095	SS MAIN @ LAT
383	26802162.11	734294.624	2781.448	SS LAT
384	26802192.05	734318.528	2780.323	SS MAIN @ LAT
385	26802222.89	734316.059	2780.51	SS LAT
386	26802193.62	734400.019	2778.126	SS MAIN @ LAT
387	26802223.91	734398.369	2778.2	SS LAT
388	26802194.14	734425.289	2777.413	SS MAIN @ LAT
389	26802165.5	734426.086	2778.582	SS LAT
390	26802194.94	734482.423	2775.736	SS MAIN @ LAT
391	26802224.95	734481.139	2775.696	SS LAT
392	26802195.12	734506.382	2775.055	SSMH WEST IN
393	26802195.17	734511.415	2774.763	SSMH EAST OUT
394	26802196.36	734554.369	2773.147	SS MAIN @ LAT
395	26802166.93	734553.707	2774.92	SS LAT
396	26802196.57	734565.2	2772.658	SS MAIN @ LAT
397	26802226.33	734563.153	2773.25	SS LAT
398	26802198.28	734643.636	2769.989	SS MAIN @ LAT
399	26802225.67	734644.312	2770.262	SS LAT
400	26802198.86	734690.516	2768.295	SS MAIN @ LAT
401	26802172.36	734691.239	2769.946	SS LAT
402	26802199.42	734726.352	2767.033	SS MAIN @ LAT
403	26802225.66	734726.484	2767.765	SS LAT
404	26802200.82	734811.215	2764.118	SS MAIN @ LAT
405	26802226.57	734809.76	2764.663	SS LAT
406	26802200.95	734822.579	2763.672	SS MAIN @ LAT
407	26802172.1	734822.753	2765.766	SS LAT
408	26802202.18	734892.375	2761.312	SS MAIN @ LAT
409	26802228.59	734892.636	2762.03	SS LAT
410	26802203.08	734951.279	2759.278	SS MAIN @ LAT
411	26802175.58	734949.789	2760.248	SS LAT
412	26802203.02	734975.362	2758.725	SS MAIN @ LAT
413	26802228.12	734975.12	2759.01	SS LAT
414	26802200.84	735057.318	2757.603	SS MAIN @ LAT
415	26802230.51	735056.761	2758.201	SS LAT
416	26802200.09	735087.65	2757.236	SS MAIN @ LAT
417	26802176.56	735086.601	2757.753	SS LAT
418	26802198.68	735139.933	2756.376	SS MAIN @ LAT
419	26802230.35	735139.663	2756.927	SS LAT
420	26802197.19	735199.062	2755.59	SS MAIN @ LAT
421	26802233.33	735197.469	2756.43	SS LAT
422	26802196.71	735220.983	2755.31	SS MAIN @ LAT
423	26802175.87	735218.982	2755.811	SS LAT
424	26802194.7	735308.479	2754.218	SS MAIN @ LAT
425	26802224.84	735307.703	2754.881	SS LAT
426	26802194.18	735345.351	2753.557	SSMH EAST OUT
427	26802193.82	735375.665	2752.232	SS MAIN @ LAT
428	26802165.14	735375.132	2752.8	SS LAT
429	26802193.64	735434.278	2749.759	SS MAIN @ LAT
430	26802222.54	735431.23	2750.08	SS LAT
431	26802193.33	735513.444	2746.474	SS MAIN @ LAT
432	26802222.72	735511.119	2747.197	SS LAT
433	26802193.44	735520.567	2746.155	SS MAIN @ LAT
434	26802165.83	735519.286	2747.175	SS LAT
435	26802193.06	735594.257	2743.173	SS MAIN @ LAT
436	26802222.78	735593.434	2743.966	SS LAT
437	26802192.08	735663.519	2740.228	SS MAIN @ LAT
438	26802165.08	735662.428	2740.994	SS LAT
439	26802192.78	735673.789	2739.843	SS MAIN @ LAT

POINT#	NORTHING	EASTING	ELEVATION	DESCRIPTION
440	26802222.41	735674.377	2740.669	SS LAT
441	26802192.48	735713.484	2738.23	SS MAIN @ LAT
442	26802163.5	735713.128	2739.851	SS LAT
443	26802192.47	735733.796	2737.417	SS MAIN @ LAT
444	26802222.22	735734.072	2738.217	SS LAT
445	26802008.86	735254.506	2742.27	SS STUB
446	26802016.89	735254.00	2741.86	