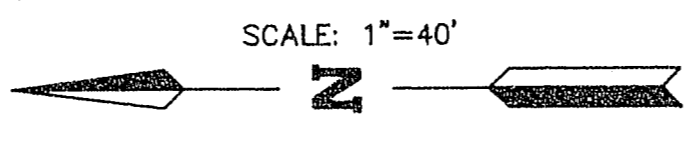
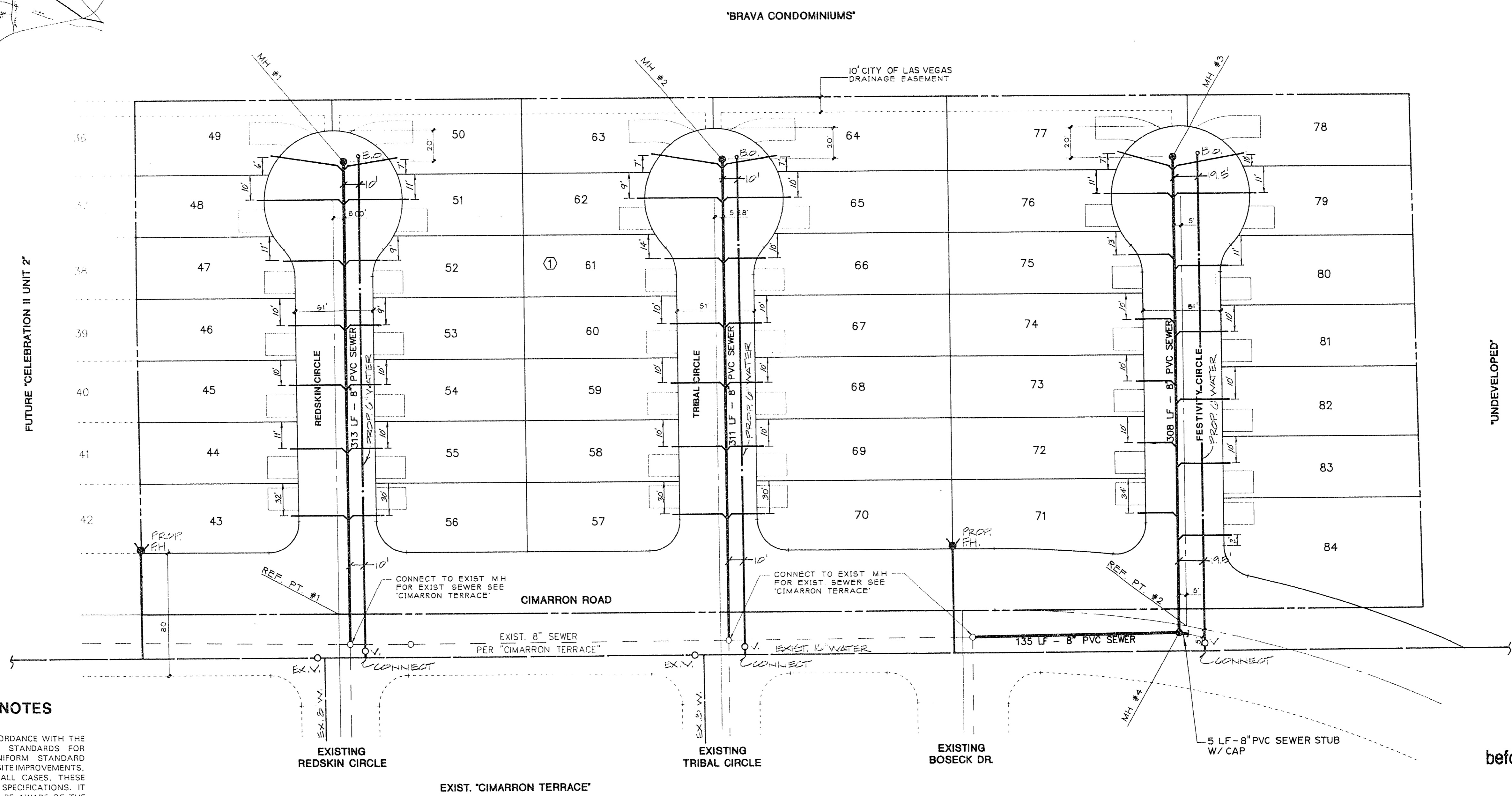


VICINITY MAP



BENCHMARK

B.M. - CITY OF LAS VEGAS DATUM B.M. #0LV0033SSE6
 ALU. PLATE IN TOP OF CURB, NORTH SIDE OF CHARLESTON BLVD.,
 75' WEST OF SHELTER ISLAND WAY
 ELEVATION = 2555.683'



UNDEVELOPED

QUANTITY ESTIMATE

- 4" DIAMETER MANHOLE..... 4 EA
- 8" SEWER MAIN..... 1,072 LF
- 4" SEWER LATERALS..... 1,533 LF

NOTE: THESE QUANTITIES ARE ONLY ESTIMATES,
 CONTRACTOR TO VERIFY.

CITY OF LAS VEGAS SEWER NOTES

1. ALL CONSTRUCTION AND MATERIALS SHALL BE IN ACCORDANCE WITH THE LATEST EDITION OF THE DESIGN & CONSTRUCTION STANDARDS FOR WASTEWATER COLLECTION SYSTEMS AND THE UNIFORM STANDARD SPECIFICATIONS FOR PUBLIC WORKS' CONSTRUCTION OFF-SITE IMPROVEMENTS, CLARK COUNTY AREA, NEVADA, AS AMENDED. IN ALL CASES, THESE STANDARDS SHALL SUPERSEDE THE UNIFORM STANDARD SPECIFICATIONS. IT WILL BE THE RESPONSIBILITY OF THE CONTRACTOR TO BE AWARE OF THE CONTENTS OF THE ABOVE SPECIFICATION BOOKS.
2. IT SHALL BE THE CONTRACTOR'S RESPONSIBILITY TO PERFORM CONSTRUCTION AS PER PLANS. ANY ADDITIONS, DELETIONS, OR CHANGES SHALL FIRST MEET WITH THE APPROVAL OF THE CONTROLLING AGENCY.
3. CHISEL "S" OR "G" IN CURBS WHERE SEWER OR GAS LATERALS PASS UNDER THE CURB.
4. POLYVINYL (PVC) SEWER PIPE SHALL MEET ASTM D-3034 SDR 35 SPECIFICATIONS' INSTALLED WITH SAND BEDDING AND BACKFILL OF TYPE II GRAVEL.
5. ALL MANHOLES IN PAVED STREETS 80' R/W AND LARGER, SHALL HAVE CONCRETE COLLARS.
6. TEE SADDLES SHALL BE USED TO CONNECT SEWER LATERALS TO EXISTING MAIN LINES UP TO 12" DIA. SIZE. CONNECTIONS TO 15" OR LARGER MAINS SHALL REQUIRE SPECIAL PROCEDURES.
7. A SEWER MAIN CROSSING OVER A WATER MAIN OR LESS THAN 18" UNDER A WATER MAIN, MUST BE REINFORCED CONCRETE ENCASED FOR A DISTANCE NOT LESS THAN TEN FEET (10') TO EACH SIDE OF THE CENTERLINE OF THE WATER MAIN.
8. ALL CONTRACTORS INSTALLING SEWER MAINS THAT WILL BE UNDER THE JURISDICTION OF THE CONTROLLING AGENCY MUST BE CLASS "A" CONTRACTORS.

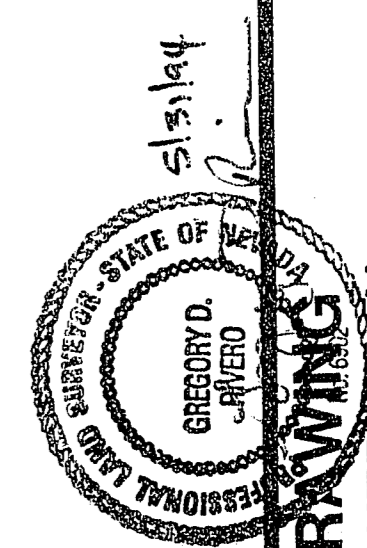
MANHOLE CONTROL TABLE

MH #	NORTHING	EASTING
1	6742.91	5291.48
2	6492.62	5291.64
3	6197.91	5291.81
4	6197.53	4983.41
REFERENCE POINTS		
1	6748.55	4998.07
2	6192.53	4987.61

NOTE:

EXISTING UTILITY LOCATIONS SHOWN HEREIN ARE APPROXIMATE ONLY. IT SHALL BE THE CONTRACTOR'S RESPONSIBILITY TO DETERMINE THE EXACT VERTICAL AND HORIZONTAL LOCATION OF ALL EXISTING UNDERGROUND UTILITIES PRIOR TO COMMENCING CONSTRUCTION. NO REPRESENTATION IS MADE THAT ALL EXISTING UTILITIES ARE SHOWN HEREON. THE ENGINEER ASSUMES NO RESPONSIBILITY FOR UTILITIES NOT SHOWN OR UTILITIES NOT SHOWN IN THEIR PROPER LOCATION.

Call before you Dig.
 1-800-227-2600
 UNDERGROUND SERVICE (USA)



APPROVE	REV	DATE	BY	REVISION
	1	7-20-92	CS	REV. SEWER NOTES, ADD 5' STUB
	2	8-11-92	CS	EXHIBIT 25A, REVISIONS TO ADD MATS

ESI ENGINEERS AND SURVEYORS INC.
 708 N. CHARLESTON BLVD., SUITE 200, LAS VEGAS, NV 89101
 (702) 363-4444
 SUBMITTED BY: *Gregory D. Chao*
 DATE: 7/27/92

RECORD DRAWING
MASTER SEWER PLAN
CELEBRATION II UNIT 1

W.O. #:	821 - A551
BY:	CHAO
DATE:	JUNE, 1992
SCALE:	1" = 40'

SHEET
8
 OF 11 SHEETS

10-23-96 (As Built) 3074-4225-1