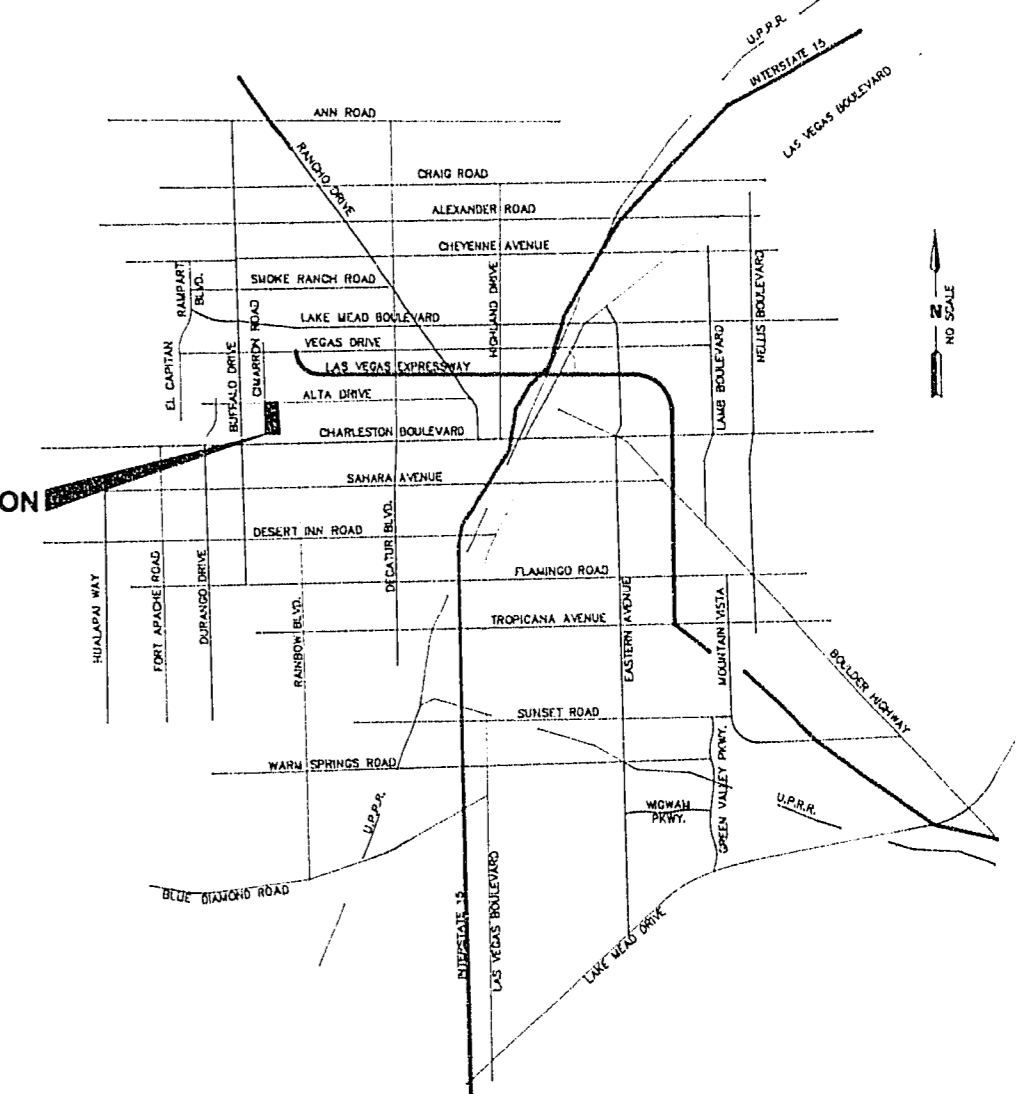


SCALE: 1"=40'

EXISTING "BRAVO CONDOMINIUMS (PHASE 1)"  
(REFER TO C.L.V. DWG. NO. 107Y-4201)

PROJECT LOCATION



VICINITY MAP

MANHOLE CONTROL TABLE

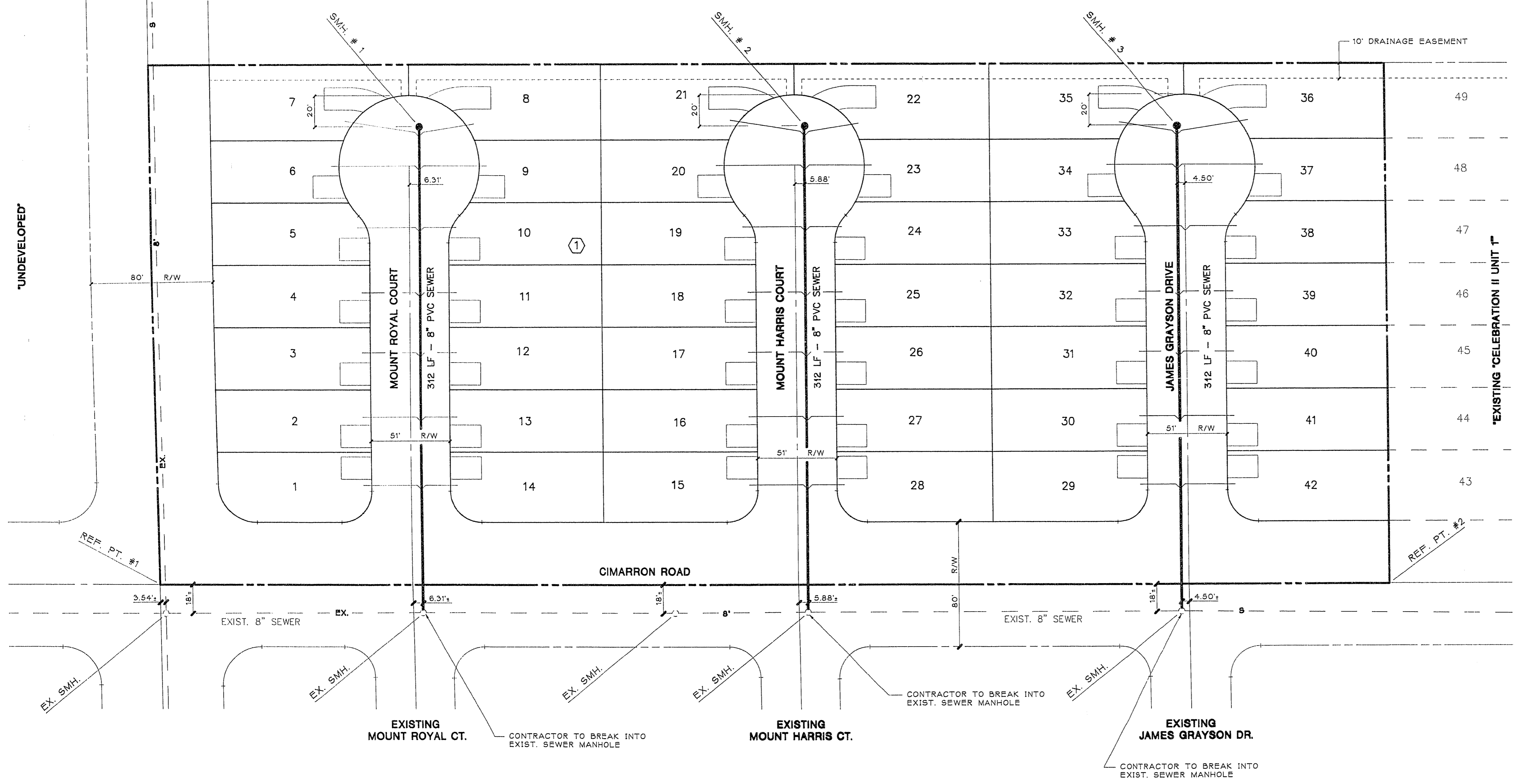
MH #	NORTHING	EASTING
1	7506.42	5291.00
2	7255.83	5291.16
3	7013.31	5291.30
REFERENCE POINTS		
1	7677.87	4996.92
2	6676.50	4997.91

QUANTITY ESTIMATE

- 4" DIAMETER MANHOLE..... 3 EA.
- 8" SEWER MAIN..... 936 LF.
- 4" SEWER LATERALS..... 1,485 LF.

NOTE: THESE QUANTITIES ARE ONLY ESTIMATES, CONTRACTOR TO VERIFY.

Call before you Dig.  
1-800-227-2600  
UNDERGROUND SERVICE (USA)



EXIST. "CIMARRON ESTATES NO. 1"  
(REFER TO C.L.V. DWG. NO. 107Y-4082-1)

CITY OF LAS VEGAS SEWER NOTES

- ALL CONSTRUCTION AND MATERIALS SHALL BE IN ACCORDANCE WITH THE LATEST EDITION OF THE DESIGN & CONSTRUCTION STANDARDS FOR WASTEWATER COLLECTION SYSTEMS AND THE UNIFORM STANDARD SPECIFICATIONS FOR PUBLIC WORKS' CONSTRUCTION OFF-SITE IMPROVEMENTS, CLARK COUNTY AREA, NEVADA, AS AMENDED. IN ALL CASES, THESE STANDARDS SHALL SUPERSEDE THE UNIFORM STANDARD SPECIFICATIONS. IT WILL BE THE RESPONSIBILITY OF THE CONTRACTOR TO BE AWARE OF THE CONTENTS OF THE ABOVE SPECIFICATION BOOKS.
- IT SHALL BE THE CONTRACTOR'S RESPONSIBILITY TO PERFORM CONSTRUCTION AS PER PLANS. ANY ADDITIONS, DELETIONS, OR CHANGES SHALL FIRST MEET WITH THE APPROVAL OF THE CONTROLLING AGENCY.
- CHISEL "S" OR "G" IN CURBS WHERE SEWER OR GAS LATERALS PASS UNDER THE CURB.
- POLYVINYL CHLORIDE (PVC) SEWER PIPE SHALL MEET ASTM D-4044 SDR 45 SPECIFICATIONS, AND INSTALLED WITH SAND BEDDING AND BACKFILL OR TYPE II GRAVEL.
- ALL MANHOLES IN PAVED STREETS 80' R/W AND LARGER, SHALL HAVE CONCRETE COLLARS.
- TEE SADDLES SHALL BE USED TO CONNECT SEWER LATERALS TO EXISTING MAIN LINES UP TO 12" DIA. SIZE. CONNECTIONS TO 15" OR LARGER MAINS SHALL REQUIRE SPECIAL PROCEDURES.
- A SEWER MAIN CROSSING OVER A WATER MAIN OR LESS THAN 18" UNDER A WATER MAIN MUST BE REINFORCED CONCRETE ENCASED PIPE FOR A DISTANCE NOT LESS THAN TEN FEET (10') TO EACH SIDE OF THE CENTERLINE OF THE WATER MAIN.
- ALL CONTRACTORS INSTALLING SEWER MAINS THAT WILL BE UNDER THE JURISDICTION OF THE CONTROLLING AGENCY MUST BE CLASS "A" CONTRACTORS.

BENCHMARK

B.M. - CITY OF LAS VEGAS DATUM B.M. #0LV0033SSE6  
ALU. PLATE IN TOP OF CURB, NORTH SIDE OF CHARLESTON BLVD.,  
75' WEST OF SHELTER ISLAND WAY  
ELEVATION = 2555.683'

NOTE:

EXISTING UTILITY LOCATIONS SHOWN HEREIN ARE APPROXIMATE ONLY. IT SHALL BE THE CONTRACTOR'S RESPONSIBILITY TO DETERMINE THE EXACT VERTICAL AND HORIZONTAL LOCATION OF ALL EXISTING UNDERGROUND UTILITIES PRIOR TO COMMENCING CONSTRUCTION. NO REPRESENTATION IS MADE THAT ALL EXISTING UTILITIES ARE SHOWN HEREON. THE ENGINEER ASSUMES NO RESPONSIBILITY FOR UTILITIES NOT SHOWN OR UTILITIES NOT SHOWN IN THEIR PROPER LOCATION.

APPROVAL REV. DATE BY

ESJ ENGINEERS AND SURVEYORS, INC.  
PLANNING ENGINEER: REG. # 10000  
REGISTERED PROFESSIONAL ENGINEER: REG. # 7700  
708 W. CHARLESTON BLVD., SUITE 200, LAS VEGAS, NV 89102  
SUBMITTED BY: *Daniel J. [Signature]* 8-14-92

TITLE: MASTER SEWER PLAN  
PROJECT: CELEBRATION II UNIT 2

W.O. #: 821 - A552  
BY: B.L.G.  
DATE: AUGUST 1992  
SCALE: 1" = 40'

SHEET 8 OF 11 SHEETS

10-23-84

3094-4225-2