

- CITY OF LAS VEGAS SEWER NOTES**
1. ALL CONSTRUCTION AND MATERIALS SHALL BE IN ACCORDANCE WITH THE LATEST EDITION OF THE DESIGN & CONSTRUCTION STANDARDS FOR WASTEWATER COLLECTION SYSTEMS AND THE UNIFORM STANDARDS SPECIFICATIONS FOR PUBLIC WORKS. CONSTRUCTION OF SITE IMPROVEMENTS, CULVERTS, MANHOLES, AND MAINS SHALL BE IN ACCORDANCE WITH THE UNIFORM STANDARD SPECIFICATIONS OF THE CONTRACTOR.
 2. IT SHALL BE THE CONTRACTOR'S RESPONSIBILITY TO PERFORM CONSTRUCTION AS APPROVED BY THE CONTROLLING AGENCY.
 3. APPROVAL OF THE CONTROLLING AGENCY.
 4. ANY ADDITIONS, DELETIONS OR CHANGES SHALL FIRST MEET WITH THE APPROVAL OF THE CONTROLLING AGENCY.
 5. TO BE MADE OF THE CONTENTS OF THE ABOVE SPECIFICATION BOOKS.
 6. STANDARD SPECIFICATIONS. IT WILL BE THE RESPONSIBILITY OF THE CONTRACTOR TO BE AWARE OF THE CONTENTS OF THE ABOVE SPECIFICATION BOOKS.
 7. AMENDED. IN ALL CASES, THESE STANDARDS SHALL SUPERSEDE THE UNIFORM CONSTRUCTION OF SITE IMPROVEMENTS, CULVERTS, MANHOLES, AND MAINS AS APPLICABLE.
 8. OF THE CONTROLLING AGENCY MUST BE CLASS "A" CONTRACTORS.

MANHOLE CONTROL TABLE

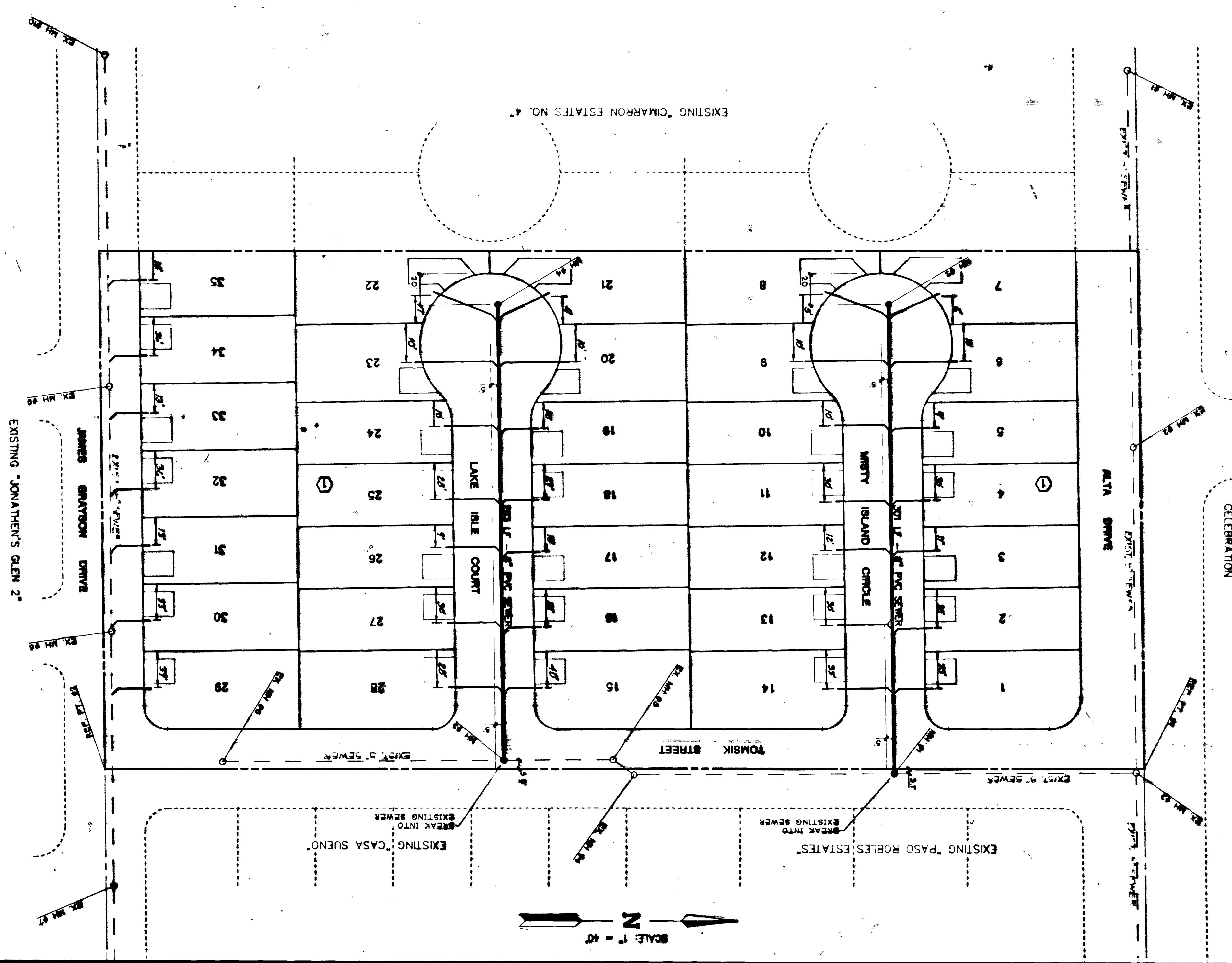
| LINE | MANHOLE | EXISTING | PROPOSED |
|------|---------|----------|----------|
| 1 | 4670.26 | 7000.23 | |
| 2 | 4693.92 | 6698.80 | |
| 3 | 4619.10 | 6698.80 | |
| 4 | 4614.60 | 6699.00 | |
| 5 | 5018.47 | 6348.11 | |
| 6 | 5023.03 | 6790.28 | |
| 7 | 5023.66 | 6999.00 | |
| 8 | 4689.55 | 6991.47 | |
| 9 | 4438.47 | 6993.32 | |
| 10 | 4368.69 | 7073.22 | |
| 11 | 4368.69 | 7073.22 | |
| 12 | 4368.69 | 7073.22 | |
| 13 | 4368.69 | 7073.22 | |
| 14 | 4368.69 | 7073.22 | |
| 15 | 4368.69 | 7073.22 | |
| 16 | 4368.69 | 7073.22 | |
| 17 | 4368.69 | 7073.22 | |
| 18 | 4368.69 | 7073.22 | |
| 19 | 4368.69 | 7073.22 | |
| 20 | 4368.69 | 7073.22 | |
| 21 | 4368.69 | 7073.22 | |
| 22 | 4368.69 | 7073.22 | |
| 23 | 4368.69 | 7073.22 | |
| 24 | 4368.69 | 7073.22 | |
| 25 | 4368.69 | 7073.22 | |
| 26 | 4368.69 | 7073.22 | |
| 27 | 4368.69 | 7073.22 | |
| 28 | 4368.69 | 7073.22 | |
| 29 | 4368.69 | 7073.22 | |
| 30 | 4368.69 | 7073.22 | |
| 31 | 4368.69 | 7073.22 | |
| 32 | 4368.69 | 7073.22 | |
| 33 | 4368.69 | 7073.22 | |
| 34 | 4368.69 | 7073.22 | |
| 35 | 4368.69 | 7073.22 | |
| 36 | 4368.69 | 7073.22 | |
| 37 | 4368.69 | 7073.22 | |
| 38 | 4368.69 | 7073.22 | |
| 39 | 4368.69 | 7073.22 | |
| 40 | 4368.69 | 7073.22 | |
| 41 | 4368.69 | 7073.22 | |
| 42 | 4368.69 | 7073.22 | |
| 43 | 4368.69 | 7073.22 | |
| 44 | 4368.69 | 7073.22 | |
| 45 | 4368.69 | 7073.22 | |
| 46 | 4368.69 | 7073.22 | |
| 47 | 4368.69 | 7073.22 | |
| 48 | 4368.69 | 7073.22 | |
| 49 | 4368.69 | 7073.22 | |
| 50 | 4368.69 | 7073.22 | |
| 51 | 4368.69 | 7073.22 | |
| 52 | 4368.69 | 7073.22 | |
| 53 | 4368.69 | 7073.22 | |
| 54 | 4368.69 | 7073.22 | |
| 55 | 4368.69 | 7073.22 | |
| 56 | 4368.69 | 7073.22 | |
| 57 | 4368.69 | 7073.22 | |
| 58 | 4368.69 | 7073.22 | |
| 59 | 4368.69 | 7073.22 | |
| 60 | 4368.69 | 7073.22 | |
| 61 | 4368.69 | 7073.22 | |
| 62 | 4368.69 | 7073.22 | |
| 63 | 4368.69 | 7073.22 | |
| 64 | 4368.69 | 7073.22 | |
| 65 | 4368.69 | 7073.22 | |
| 66 | 4368.69 | 7073.22 | |
| 67 | 4368.69 | 7073.22 | |
| 68 | 4368.69 | 7073.22 | |
| 69 | 4368.69 | 7073.22 | |
| 70 | 4368.69 | 7073.22 | |
| 71 | 4368.69 | 7073.22 | |
| 72 | 4368.69 | 7073.22 | |
| 73 | 4368.69 | 7073.22 | |
| 74 | 4368.69 | 7073.22 | |
| 75 | 4368.69 | 7073.22 | |
| 76 | 4368.69 | 7073.22 | |
| 77 | 4368.69 | 7073.22 | |
| 78 | 4368.69 | 7073.22 | |
| 79 | 4368.69 | 7073.22 | |
| 80 | 4368.69 | 7073.22 | |
| 81 | 4368.69 | 7073.22 | |
| 82 | 4368.69 | 7073.22 | |
| 83 | 4368.69 | 7073.22 | |
| 84 | 4368.69 | 7073.22 | |
| 85 | 4368.69 | 7073.22 | |
| 86 | 4368.69 | 7073.22 | |
| 87 | 4368.69 | 7073.22 | |
| 88 | 4368.69 | 7073.22 | |
| 89 | 4368.69 | 7073.22 | |
| 90 | 4368.69 | 7073.22 | |
| 91 | 4368.69 | 7073.22 | |
| 92 | 4368.69 | 7073.22 | |
| 93 | 4368.69 | 7073.22 | |
| 94 | 4368.69 | 7073.22 | |
| 95 | 4368.69 | 7073.22 | |
| 96 | 4368.69 | 7073.22 | |
| 97 | 4368.69 | 7073.22 | |
| 98 | 4368.69 | 7073.22 | |
| 99 | 4368.69 | 7073.22 | |
| 100 | 4368.69 | 7073.22 | |

BENCHMARK
 ALUMINUM PLATE IN TOP OF CURB NORTH SIDE OF CHARLESTON BLVD. 75.2 WEST OF SHELTER ISLAND WAY
 ELEV. = 2555.683
 GVD DATUM #LV0033566

QUANTITY ESTIMATE
 NOTE: THESE QUANTITIES ARE ONLY ESTIMATES.
 CONTRACTOR TO VERIFY:
 4" DIAMETER MANHOLE: 1.187 LF
 8" SEWER MAIN: 594 LF
 8" SEWER LATERALS: 1,187 LF

SEWER CALCULATIONS

WHOLE FAMILY: 1.0 ECU/UNIT
 88 x 10 x 850 G.P.D. = 8780 G.P.D. AVERAGE DAILY FLOW
 8780 x 2.5 PEAK FACTOR = 21950 G.P.D. PEAK FLOW



W.O. # : 021 - 4790
 BY : DTB
 DATE : APRIL 1993
 SCALE : 1" = 40'
 SHEET : 7
 OF 9 SHEETS

RECORD DRAWING
MASTER SEWER PLAN
CELEBRATION IV

ESI ENGINEERS AND ARCHITECTS INC.
 515-93
 SUBMITTED BY: [Signature]

| NO. | REV. | DATE | BY | REASON |
|-----|------|--------|----|----------------------------------|
| 1 | | 7-2-93 | LD | REVISED LAYOUT TO 2" DI. I. E.C. |

PROFESSIONAL SEAL
 REGISTERED PROFESSIONAL ENGINEER
 STATE OF NEVADA
 No. 10000
 Call before you dig
 1-800-271-2800

20-60-33
 10-23-60
 A.G.M.H. 3074-4225-II

