

BENCHMARK
CITY OF LAS VEGAS BENCHMARKS - 2008 ADJUSTMENT
ID BLV01 3418

RIVET AND PLATE IN THE TOP OF CURB AT THE SOUTHWEST CORNER OF LAS VEGAS BOULEVARD AND FREMONT STREET.

2007.31 FEET
611.829 METERS
(NAVD 88)

BASIS OF BEARING

SOUTH 62°04'40" EAST BEING THE CENTERLINE OF FREMONT STREET BETWEEN FOUND MONUMENTS AT THE INTERSECTION OF FREMONT STREET AND SEVENTH STREET, AND FREMONT STREET AND EIGHTH STREET AS SHOWN ON SURVEY FILE 87, AT PAGE 79 IN THE OFFICIAL RECORDS OF CLARK COUNTY, NEVADA.

LEGAL DESCRIPTION

SOUTH 62°04'40" EAST BEING THE CENTERLINE OF FREMONT STREET BETWEEN FOUND MONUMENTS AT THE INTERSECTION OF FREMONT STREET AND SEVENTH STREET, AND FREMONT STREET AND EIGHTH STREET AS SHOWN ON SURVEY FILE 87, AT PAGE 79 IN THE OFFICIAL RECORDS OF CLARK COUNTY, NEVADA.

APN 139-34-611-024

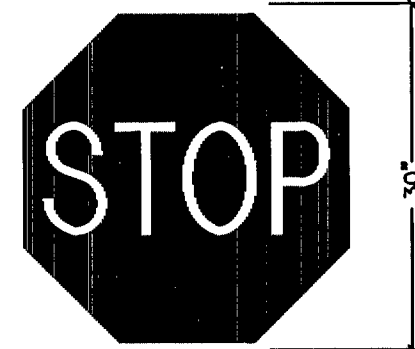
LEGEND

- | | | | |
|------|---------------------------|---------|----------------------------|
| --- | PROPERTY LINE | HP | HIGH POINT |
| --- | RIGHT OF WAY | INV | INVERT |
| --- | CENTERLINE | LF | LINEAR FEET |
| --- | AD OUTLINE | LP | LOW POINT |
| --- | EXISTING CURB | NG | NATURAL GROUND |
| --- | PROPOSED CURB | PL | PROPERTY LINE |
| --- | EXISTING EDGE OF PAVEMENT | PVC | POLYVINYL CHLORIDE |
| --- | PROPOSED EDGE OF PAVEMENT | PE | POLYETHYLENE |
| --- | EXISTING BLOCK WALL | SL | STREET LIGHT |
| --- | PROPOSED BLOCK WALL | SMH | SEWER MANHOLE |
| --- | CONTOUR LINE | SSCO | SANITARY SEWER CLEANOUT |
| --- | EXISTING OVER HEAD POWER | STA | STATION |
| AC | ASPHALTIC CONCRETE | SW | SIDEWALK |
| BC | BACK OF CURB | TC | TOP OF CURB |
| BCR | BEGINNING OF CURB RADIUS | TE | TRASH ENCLOSURE |
| BW | BACK OF WALK | TF | TOP OF FOOTING |
| CG | CURB & GUTTER | TOP | TOP OF SLOPE |
| CL | CENTERLINE | TOE | TOE OF SLOPE |
| CONC | CONCRETE | TLVF | TELEPHONE VAULT |
| E | ELECTRICAL | TRW | TOP OF RETAINING WALL |
| ECR | END OF CURB RADIUS | TW | TOP OF WALL |
| EP | EDGE OF PAVEMENT | (88.88) | EXISTING GRADE |
| EX | EXISTING | 88.88 | PROPOSED GRADE |
| FG | FINISH GRADE | CK | EXISTING 100W STREET LIGHT |
| FL | FLOW LINE | DB | DUAL PARKING METER |
| GB | GRADE BREAK | DM | SINGLE PARKING METER |
| | | EG | EXISTING GAS VALVE |
| | | FO | FIBER OPTIC PULL BOX |
| | | GP | EXISTING POWER POLE |

N Main ST 400
D-3



R7-1APR



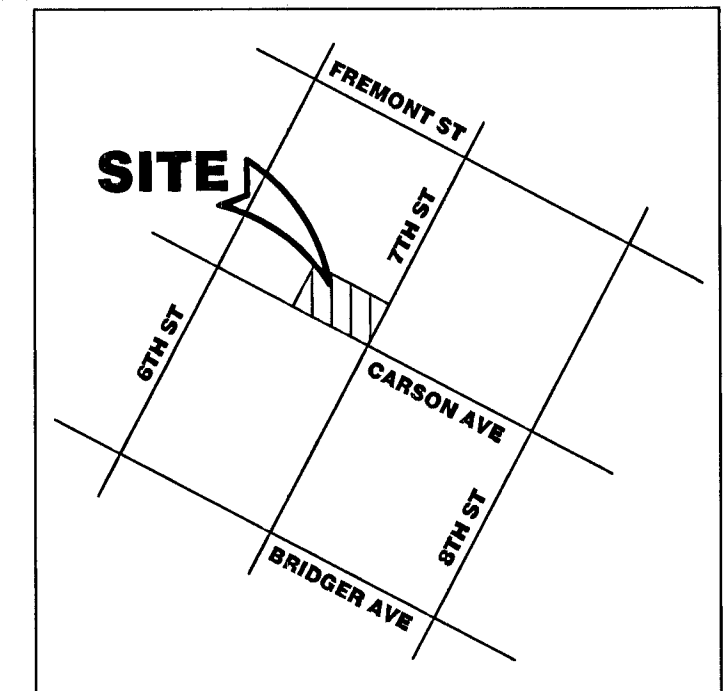
R1-1

LINE TABLE

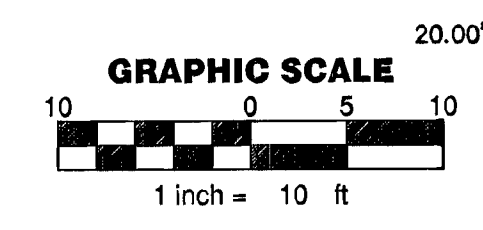
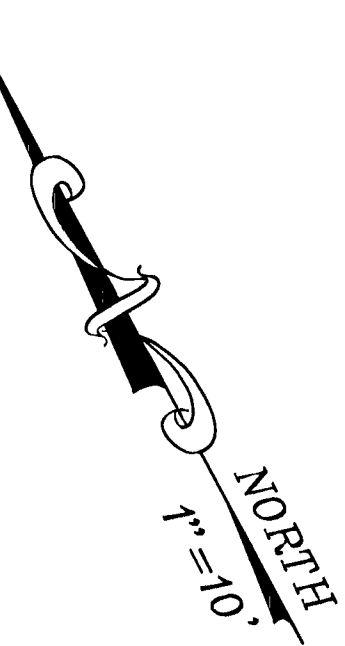
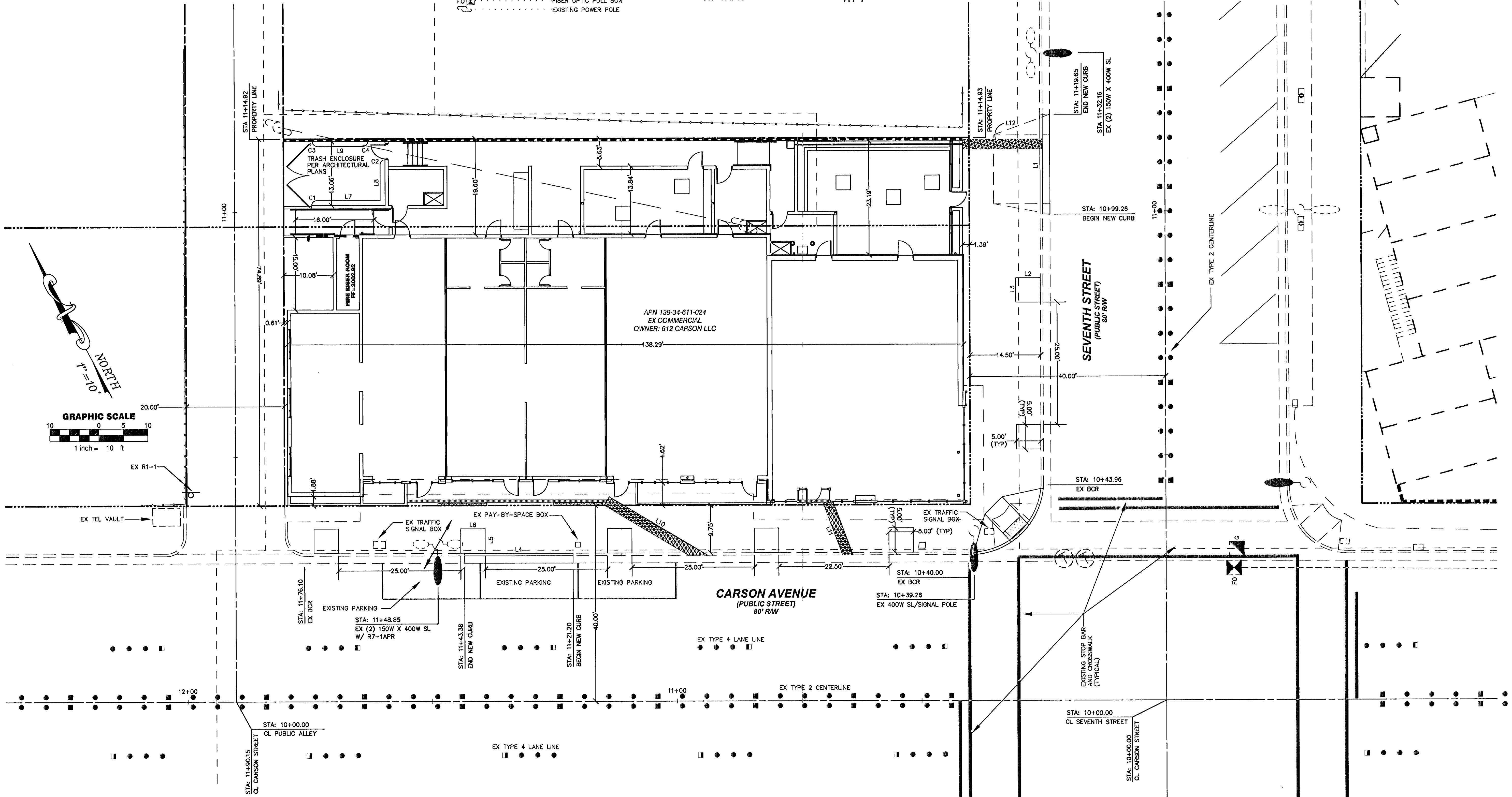
LINE	LENGTH	BEARING
L1	20.39'	S62°05'59"E
L2	5.00'	S27°52'27"W
L3	5.00'	S62°07'33"E
L4	22.17'	S27°53'36"W
L5	5.00'	N62°08'08"W
L6	5.00'	S27°53'54"W
L7	13.00'	S27°58'52"W
L8	7.34'	S62°01'33"E
L9	9.33'	N27°54'18"E
L10	23.41'	N58°45'01"E
L11	11.48'	S89°32'58"E
L12	16.38'	N27°54'01"E

CURVE TABLE

CURVE	LENGTH	RADIUS	DELTA	TANGENT
C1	1.57'	1.00'	90°00'00"	1.00'
C2	1.57'	1.00'	90°00'00"	1.00'
C3	1.57'	1.00'	90°00'00"	1.00'
C4	1.57'	1.00'	90°00'00"	1.00'



AREA MAP
N.T.S.



NO.	REV.	DESCRIPTION	BY	DATE

BRESLIN BUILDERS
5525 POLARIS AVE. LAS VEGAS, NEVADA
PHONE: (702) 798-3977 FAX: (702) 798-3608

JPR Associates Ltd.
CIVIL ENGINEERS & LAND SURVEYORS
4880 W. UNIVERSITY, SUITE B-2 PH (702) 876-2341
LAS VEGAS, NEVADA 89103 FAX (702) 876-8395

HORIZONTAL CONTROL & TRAFFIC PLAN

SEARS BUILDING REMODEL
NW CORNER CARSON AVE AND SEVENTH ST.
CITY OF LAS VEGAS, NEVADA

DRAWN BY: MA
DESIGNED BY: SE
CHECKED BY: SE

PROJECT NO. 234-14-026

SCALE: HORIZ: 1"=10'
VERT: N/A

DATE: 02-14-14

SHEET **C7** OF 8 SHEETS
SHEET 7 OF 8 SHEETS
CLV DWG # 10746242

CLV PROJECT #53516

811
AVOID CUTTING UNDERGROUND UTILITY LINES. IT'S COSTLY.
Call before you DIG.
1-800-227-2800
NEVADA POWER ENVIRONMENT AND SAFETY SERVICES DEPARTMENT
Call before you OVERHEAD
1-702-227-2929

AVOID HITTING UNDERGROUND TRAFFIC SIGNAL SYSTEMS AND STREET LIGHT SYSTEM CONDUITS IT'S COSTLY.
Call before you UNDERGROUND
1-702-455-7511
CALL BEFORE YOU DO UNDERGROUND
Call before you OVERHEAD
1-702-432-6300
LAS VEGAS AREA COMPUTERIZED TRAFFIC SYSTEM