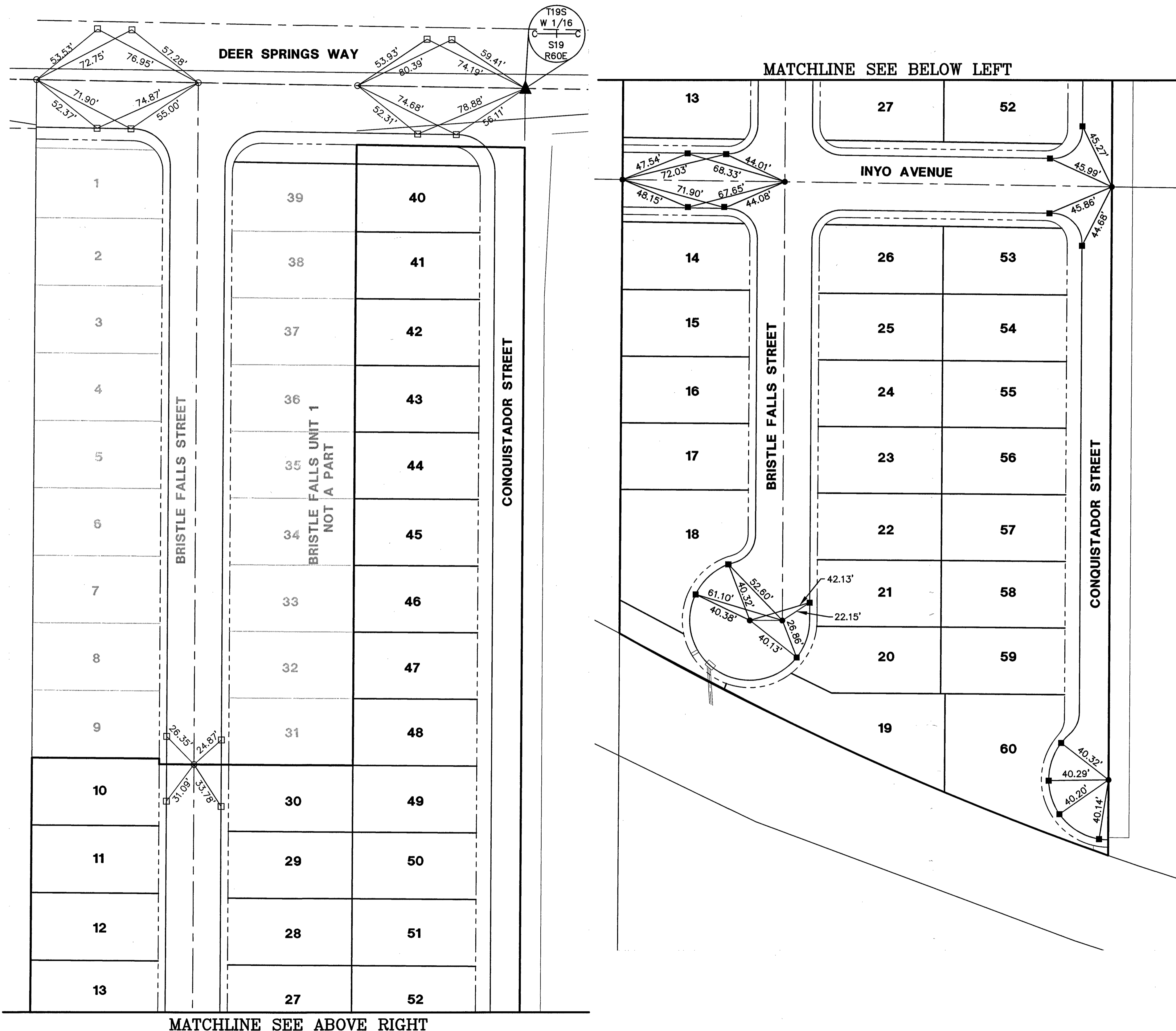
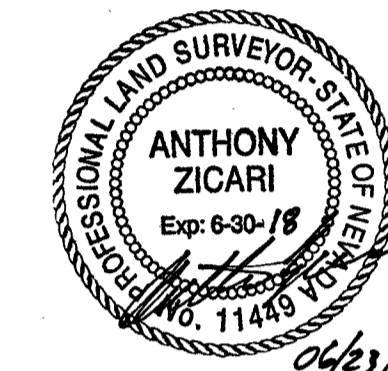


BRISTLE FALLS UNIT 2 MONUMENTATION TIE MAP

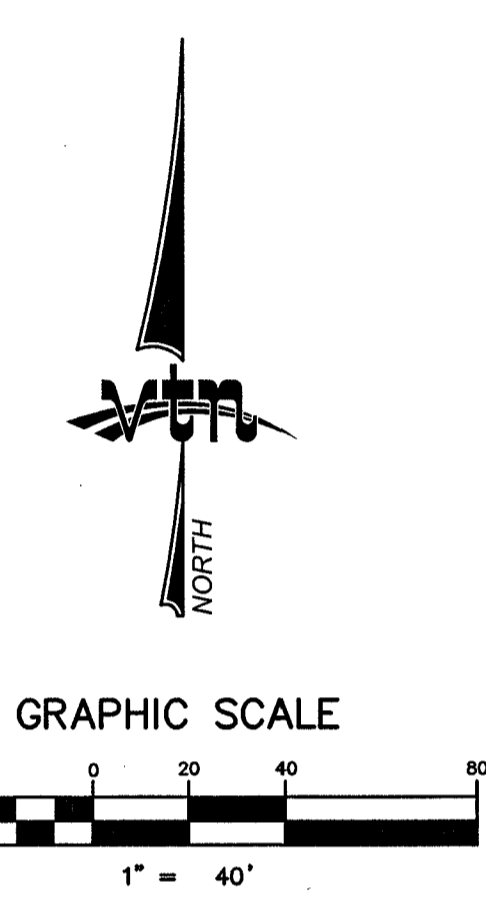
(A COMMON INTEREST COMMUNITY)
BEING A SUBDIVISION OF PORTIONS OF GOVERNMENT LOTS 21 AND 28 OF
SECTION 19, TOWNSHIP 19 SOUTH, RANGE 60 EAST, M.D.M., CITY OF LAS VEGAS, CLARK COUNTY, NEVADA.



I, ANTHONY ZICARI, A PROFESSIONAL LAND SURVEYOR LICENSED IN THE STATE OF NEVADA, DO HEREBY CERTIFY THAT THE MONUMENTS HAVE BEEN SET AND THE TIE DISTANCES ESTABLISHED AS SHOWN HEREON. THIS SURVEY WAS COMPLETED ON JUNE 23, 2016.



ANTHONY ZICARI, P.L.S.
NEVADA LICENSE NO. 11449



NOTES

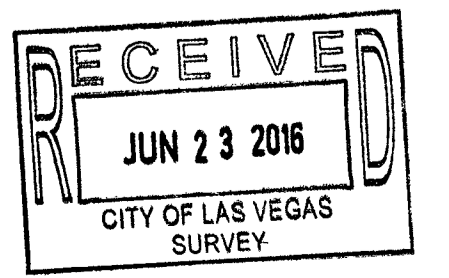
SEE FINAL MAP FOR BEARING AND DISTANCES.
(BOOK 147, PAGE 89)

LEGEND

- 2 LOT NUMBER
- RIGHT OF WAY
- LOT LINES
- SUBDIVISION BOUNDARY LINE
- STREET CENTERLINE
- BACK OF CURB LINE
- SET 5/8" REBAR AND AL. CAP STAMPED "VTN PLS 11449"
- SET REFERENCE MONUMENTS STAMPED "VTN PLS 11449" IN TOP OF CURB
- ▲ FOUND 2" BRASS IN CONCRETE STAMPED "VTN PLS 11449" WITH REFERENCE MONUMENTS
- FOUND 5/8 REBAR AND AL. CAP STAMPED "VTN PLS 11449" PER BRISTLE FALLS UNIT 1
- FOUND REFERENCE MONUMENTS STAMPED "VTN PLS 11449" IN TOP OF CURB PER BRISTLE FALLS UNIT 1

SHEET 1 OF 1

| | | | | |
|---|--------------|-----------------|-------|----|
| CONSULTING ENGINEERS • PLANNERS • LAND SURVEYORS 2727 SOUTH RAINBOW BOULEVARD LAS VEGAS, NEVADA 89102 (702) 873 - 7550 FAX (702) 362 - 2597 | | | | |
| MONUMENTATION TIE MAP FOR BRISTLE FALLS UNIT 2 (BOOK 147 OF PLATS, PAGE 0089) BEING A SUBDIVISION A PORTIONS OF GOVERNMENT LOTS 21 AND 28 OF S.19.T. 19 S., R. 60 E., M.D.M., CITY OF LAS VEGAS, CLARK COUNTY, NEVADA | | | | |
| SCALE: 1" = 40' | W.O.# 7519-1 | DATE: 6-29-2015 | SHEET | OF |
| FILE: 7519MTM | DRN. BY: JCB | REV.: 6-23-2016 | 1 | 1 |
| | CKD. BY: AZ | | | |



058-4994-2