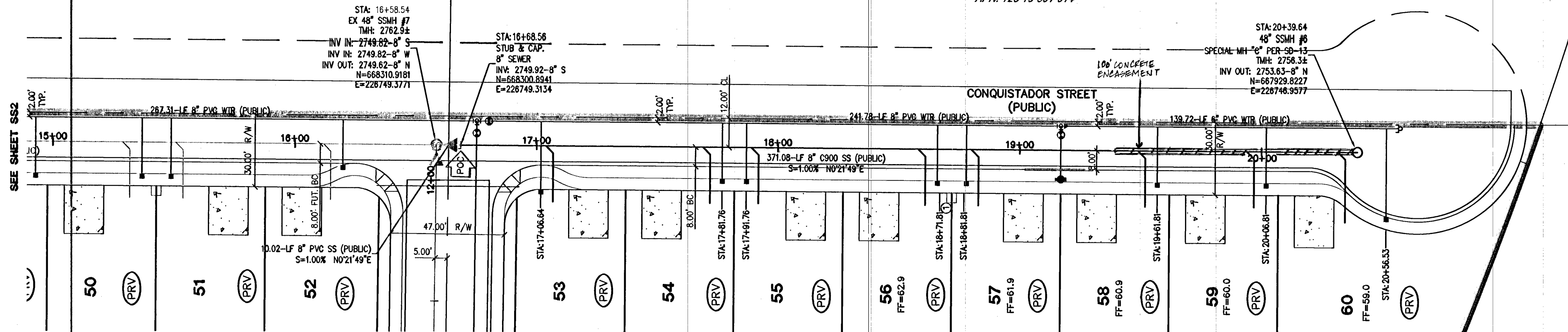
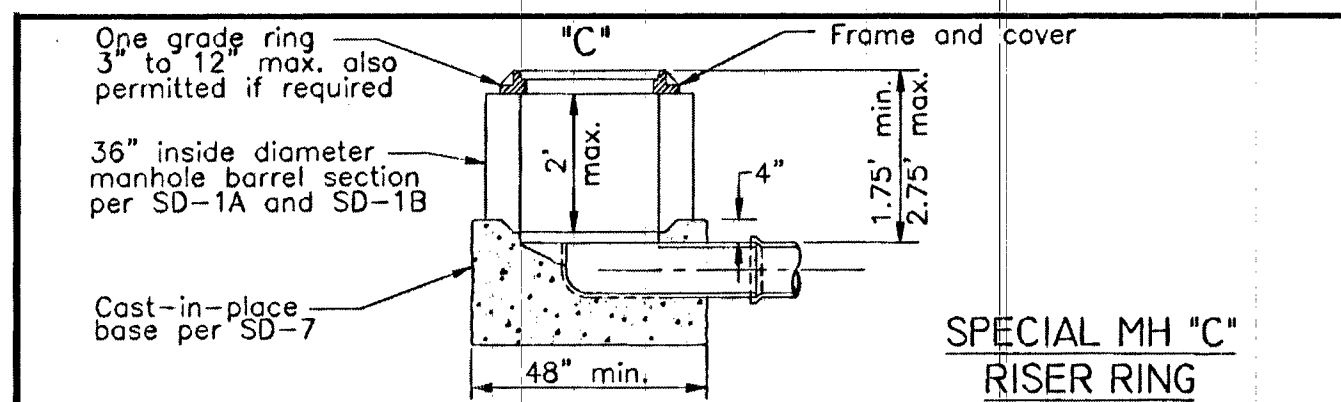
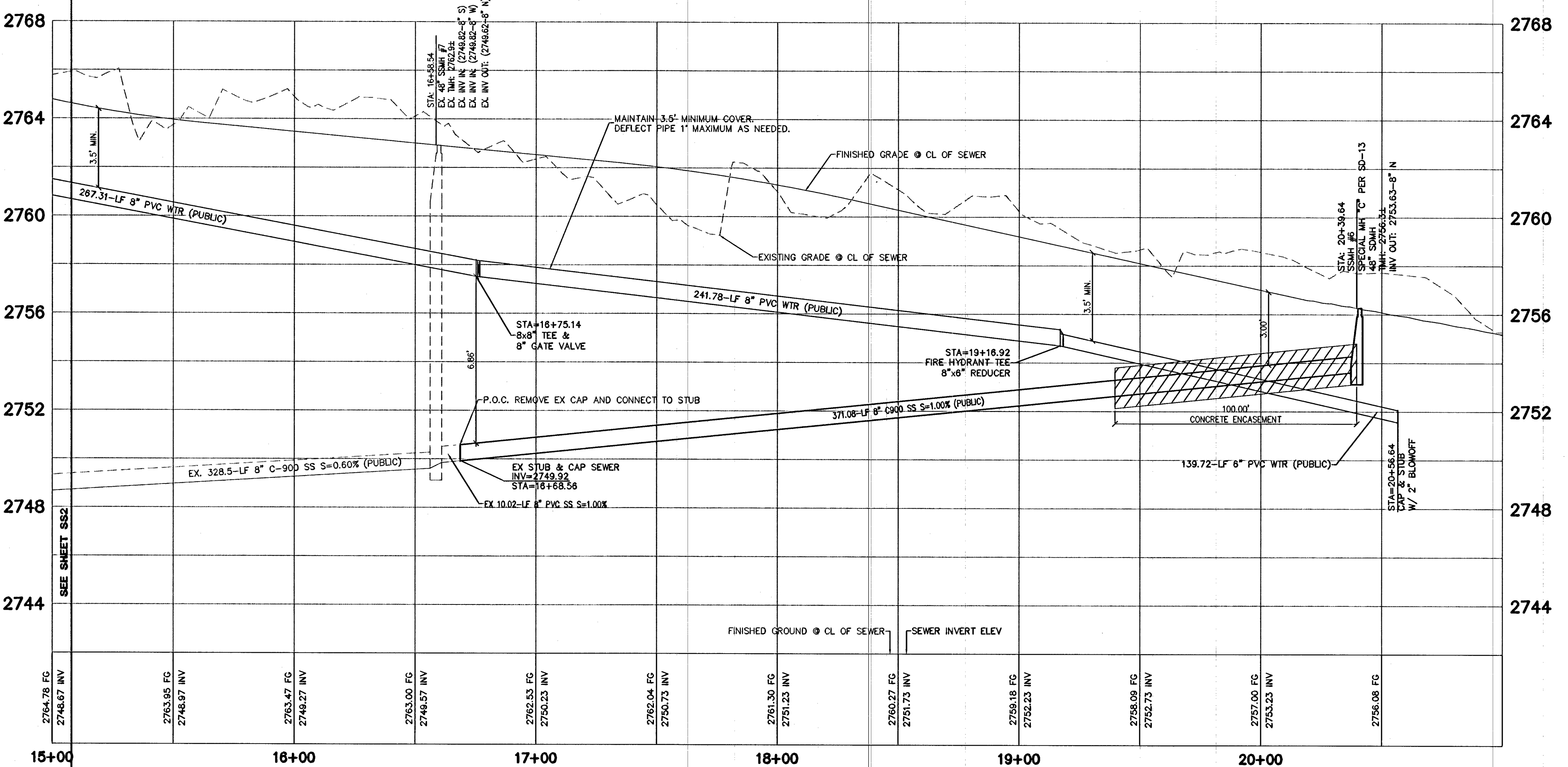


OWNER: LAS VEGAS VALLEY WATER DISTRICT  
APN: 125-19-301-014

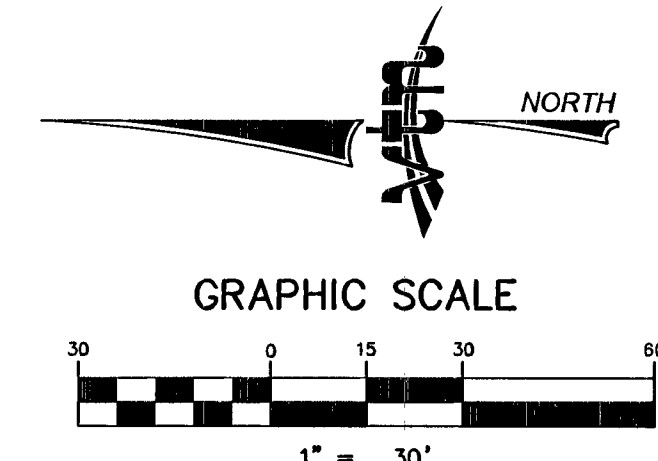
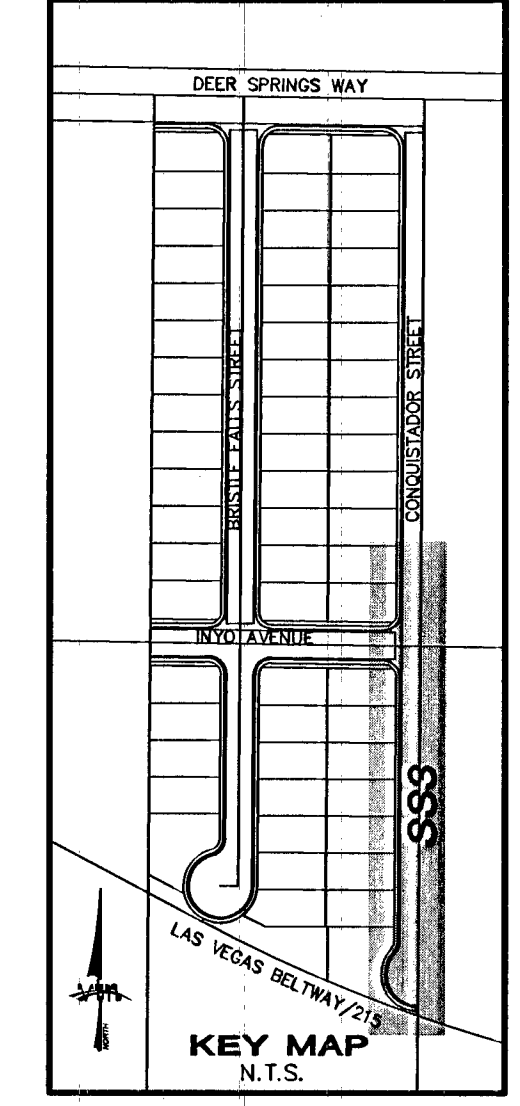
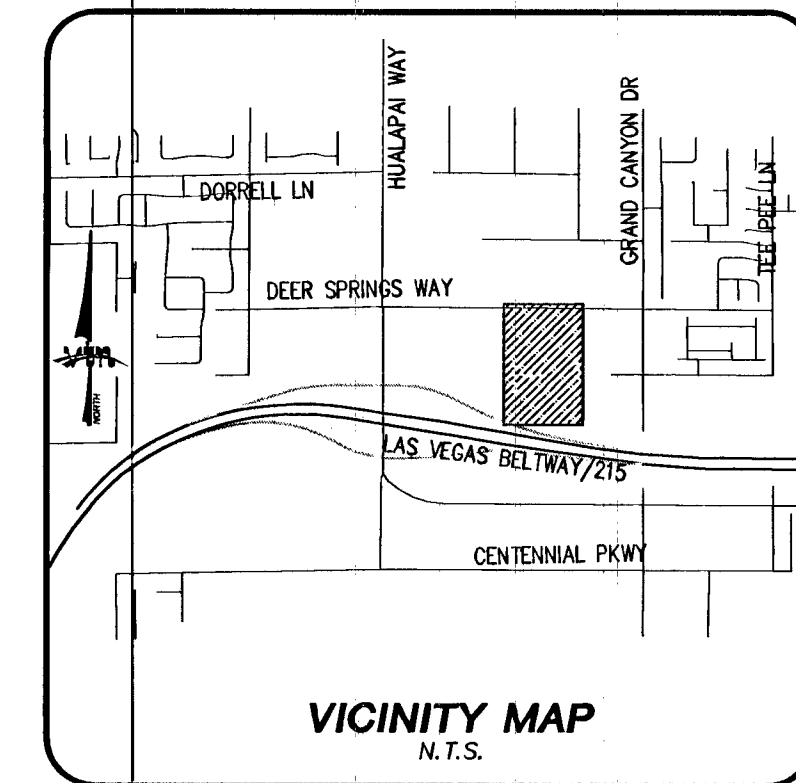


**CONQUISTADOR SEWER (PUBLIC)**



**SPECIAL SHALLOW MANHOLES**  
ISSUED: \_\_\_\_\_ NUMBER: SD-13

**PROFILE SCALES:**  
HORIZ. = 1"=30'  
VERT. = 1"=3'



**SEWER CONNECTION NOTE:**  
ONE OR MORE SEGMENTS OF THE DOWNSTREAM SEWER SYSTEM THAT WILL SERVE THIS PROJECT HAS NOT BEEN COMPLETED AND/OR ACCEPTED FOR MAINTENANCE BY THE CITY OF LAS VEGAS. ANY WORK DONE ON THIS PROJECT PRIOR TO THE COMPLETION AND/OR ACCEPTANCE OF THE DOWNSTREAM SEWER SYSTEM(S) SHALL BE DONE AT THE DEVELOPER'S OWN RISK. THE CITY OF LAS VEGAS RESERVES THE RIGHT TO PREVENT THE PHYSICAL CONNECTION OF THIS PROJECT INTO THE DOWNSTREAM SEWER SYSTEM UNTIL ALL SEGMENTS HAVE BEEN COMPLETED AND ACCEPTED FOR MAINTENANCE, OR UNTIL SUCH TIME AS THEY ARE DEEMED AVAILABLE FOR SERVICE.

**NOTE:**  
INSTALL PIPELINE MARKER BALLS IN TRENCH ABOVE EACH HORIZONTAL ELBOW FITTING, PER UDACS PLATE No. 15

**UTILITY CROSSING NOTE:**  
ALL SEWER/STORM DRAINS CROSSING WATER LINES MUST CONFORM TO SECTION 2.22 OF THE UNIFORM DESIGN AND CONSTRUCTION STANDARDS FOR PORTABLE WATER SYSTEMS (UDACS) FOR WATER AND STORM MAIN CROSSINGS AND CLEARANCES.

**PROJECT BENCHMARK:**  
PROJECT DATUM: NORTH AMERICAN VERTICAL DATUM OF 1988 (NAVD88)  
CITY OF LAS VEGAS BENCHMARK: 5LV90.19W4 2008 ADJUSTMENT (UPDATED 5/24/10) NAVD88 ELEVATION: 857.697 METERS (2813.96 FEET)  
RIVET AND PLATE CONCRETE PAD (LVWMD) 100'SE HUALAPAI WAY AND DEER SPRINGS.

**BASIS OF BEARINGS:**  
GRID NORTH AS DEFINED BY THE CENTRAL MERIDIAN OF THE NEVADA COORDINATE REFERENCE SYSTEM (NCRS), LAS VEGAS ZONE, NORTH AMERICAN DATUM OF 1983; SAID MERIDIAN BEING COINCIDENT WITH 114°58' WEST OF THE GREENWICH MERIDIAN.  
LINEAR UNIT: US SURVEY FOOT (FTUS)  
DATUM (REFERENCE FRAME): NAD 1983 (COORS 2011) EPOCH 2010  
SYSTEM: NEVADA COORDINATE REFERENCE SYSTEM (NCRS)  
ZONE: LAS VEGAS  
PROJECTION: TRANSVERSE MERCATOR  
STANDARD PARALLEL (AND LATITUDE OF GRID ORIGIN): 36°5'00"N  
LONGITUDE OF CENTRAL MERIDIAN: 114°58'00"W  
NORTHING AT GRID ORIGIN: 200,000,000 M (656,166,666 FTUS)  
EASTING AT CENTRAL MERIDIAN: 100,000,000 M (328,083,333 FTUS)  
SCALE FACTOR ON CENTRAL MERIDIAN: 1.0001 (EXACT)  
NOTES:  
1. ALL DISTANCES AND BEARINGS SHOWN HEREON ARE PROJECTED (GRID) VALUES BASED ON THE PRECEDING PROJECTION DEFINITION. THE PROJECTION WAS DEFINED SUCH THAT PROJECTED (GRID) DISTANCES ARE EQUIVALENT TO "GROUND" DISTANCES IN THE PROJECT AREA.  
2. GRID BEARINGS SHOWN HEREON (OR IMPLIED BY GRID COORDINATES) DO NOT EQUAL GEODETIC BEARINGS DUE TO MERIDIAN CONVERGENCE.

**ALL NEW WATER MAIN TO HAVE MINIMUM 42" DEPTH OF COVER PER UDACS SECTION 2.08**

**NOTE:**  
VERIFY AND LOCATE ALL EXISTING UTILITIES WITHIN THE PROJECT WORK AREA.

**WATER MAIN JOINT DEFLECTION (PVC, 4"-24")**  
PVC PIPE SHALL BE DEFLECTED AT THE JOINT UNTIL THE MAXIMUM ALLOWABLE DEFLECTION SHALL BE ONE (1) DEGREE PER JOINT WITH A MINIMUM RADIUS OF CURVATURE OF 1,150 FEET, PER UDACS 2.07.01 AND 2.07.02.  
FOR CHANGES IN DIRECTION EXCEEDING THE MAXIMUM ALLOWABLE JOINT DEFLECTION, FITTINGS SHALL BE USED.

**ENGINEER DISCLAIMER NOTE:**  
UTILITY LOCATIONS SHOWN HEREON ARE APPROXIMATE ONLY. IT SHALL BE THE CONTRACTOR'S RESPONSIBILITY TO DETERMINE THE EXACT HORIZONTAL AND VERTICAL LOCATION OF ALL EXISTING UNDERGROUND AND OVERHEAD UTILITIES AND NOTIFY THE DESIGN ENGINEER IMMEDIATELY OF ANY DISCREPANCIES PRIOR TO COMMENCING CONSTRUCTION. NO REPRESENTATION IS MADE THAT ALL EXISTING UTILITIES ARE SHOWN HEREON. THE ENGINEER ASSUMES NO RESPONSIBILITY FOR UTILITIES NOT SHOWN OR UTILITIES NOT SHOWN IN THEIR PROPER LOCATION.

**APPROVALS:**  
APPROVED FOR CONSTRUCTION  
*[Signature]*  
LAS VEGAS VALLEY WATER DISTRICT ENGINEERING SERVICES MANAGER  
DATE 9/18/14 PROJECT 122759  
LVWMD APPROVED FIRE FLOW 1500 GPM AT 20 PSI RESIDUAL

7					
6					
5					
4					
3					
2					
1					
REV	DATE	BY			

**RYLAND HOMES**  
8925 W. RUSSELL ROAD, SUITE 200  
LAS VEGAS, NV 89148  
(702) 360-7500

**SEWER PLAN & PROFILE**  
**CONQUISTADOR STREET**  
STA: 15+00.00-20+39.64

**BRISTLE FALLS**  
UNIT 2

**CITY OF LAS VEGAS**  
2727 SOUTH RAINBOW BOULEVARD  
LAS VEGAS, NEVADA 89146-3146  
PH: (702) 873-7550 FAX (702) 362-2587 WEB WWW.VTNV.COM  
CONSULTING ENGINEERS • PLANNERS • LAND SURVEYORS

**PROFESSIONAL ENGINEER STATE OF NEVADA**  
AARON M. YAMAGUCHI  
15079  
9/15/14

SHEET **393**  
12 OF 19 SHEETS  
DRAWING NO. 1074994-2

**Call before you Dig**  
1-800-4-A- Dig  
CLARK COUNTY TRAFFIC OPERATIONS  
1-800-227-2929

**Call before you Overhead**  
1-702-432-5300  
1-800-227-2929