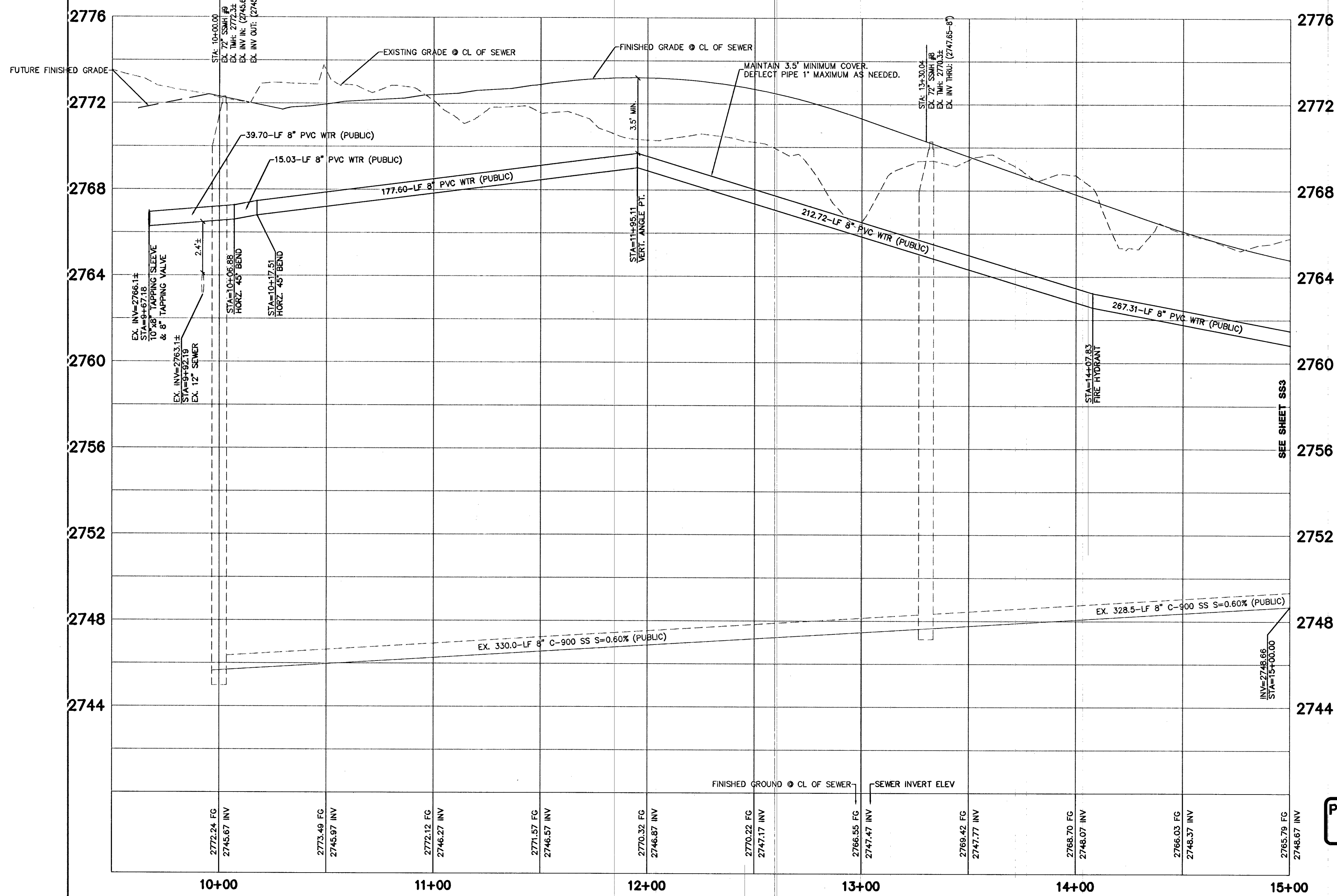


CONQUISTADOR SEWER (PUBLIC)

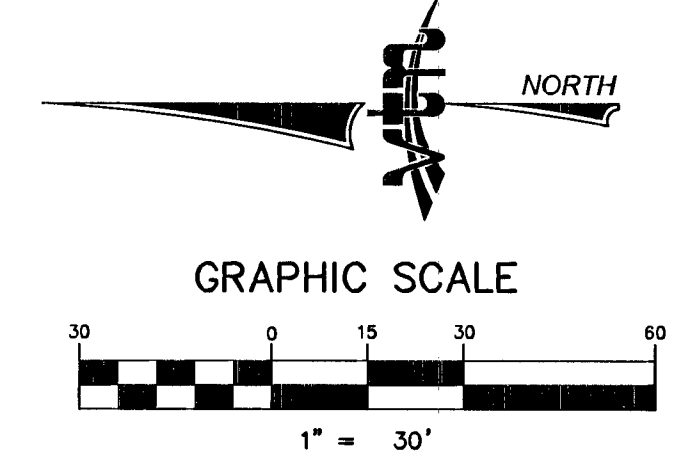
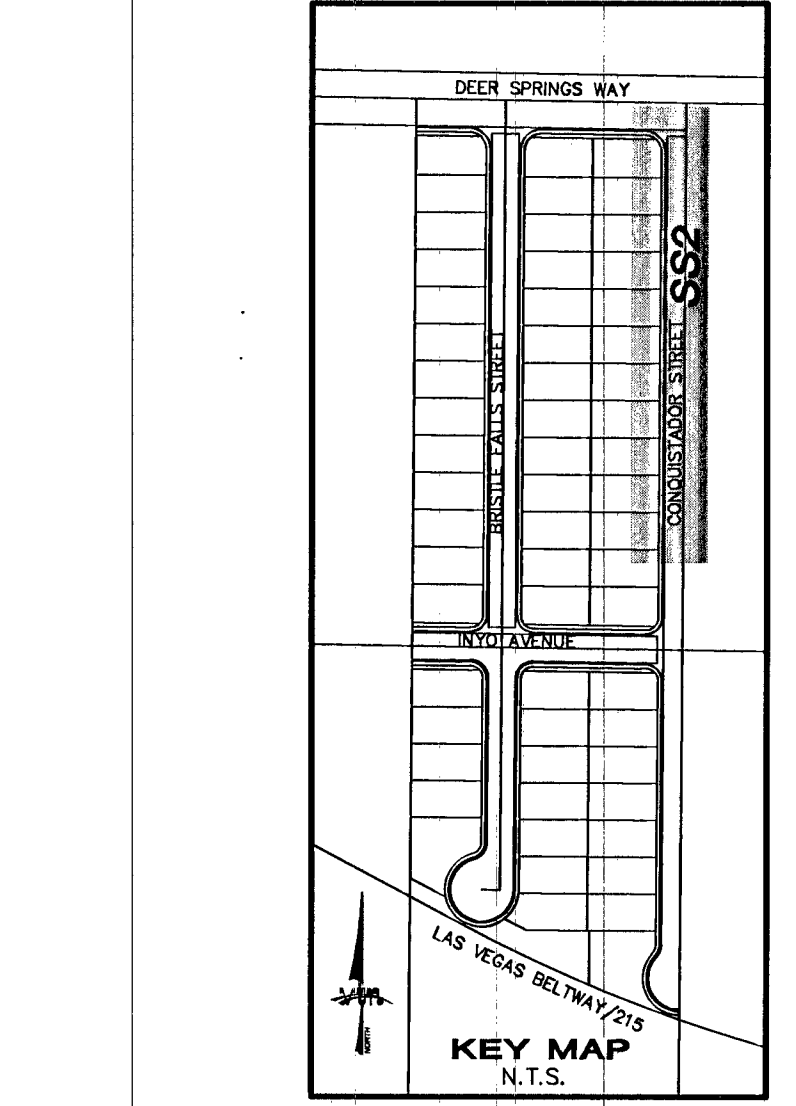
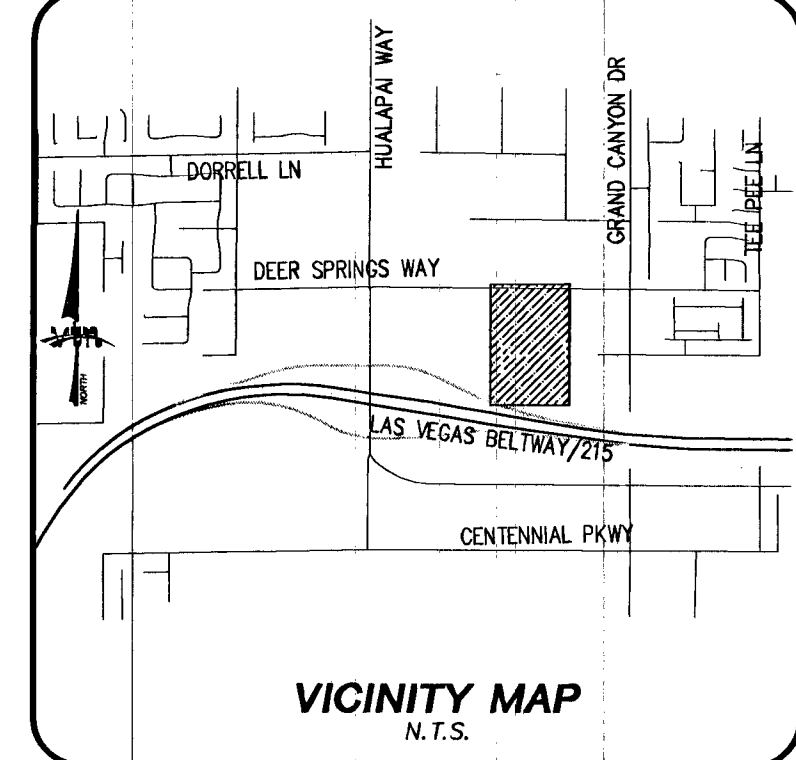


PROFILE SCALES:
HORZ. = 1"=30'
VERT. = 1"=3'

Call before you Dig
Avoid cutting underground utility lines. It's costly.
CALL 811
OR CLARK COUNTY TRAFFIC ORIGINATORS
1-800-227-2800

Call before you Dig
Avoid overhead power line contact. It's costly.
CALL 1-702-227-2929

SEWER CONNECTION NOTE:
ONE OR MORE SEGMENTS OF THE DOWNSTREAM SEWER SYSTEM THAT WILL SERVE THIS PROJECT HAS NOT BEEN COMPLETED AND/OR ACCEPTED FOR MAINTENANCE BY THE CITY OF LAS VEGAS. ANY WORK DONE ON THIS PROJECT PRIOR TO THE COMPLETION AND/OR ACCEPTANCE OF THE DOWNSTREAM SEWER SYSTEM(S) SHALL BE DONE AT THE DEVELOPER'S OWN RISK. THE CITY OF LAS VEGAS RESERVES THE RIGHT TO PREVENT THE PHYSICAL CONNECTION OF THIS PROJECT INTO THE DOWNSTREAM SEWER SYSTEM UNTIL ALL SEGMENTS HAVE BEEN COMPLETED AND ACCEPTED FOR MAINTENANCE, OR UNTIL SUCH TIME AS THEY ARE DEEMED AVAILABLE FOR SERVICE.



ALL NEW WATER MAIN TO HAVE MINIMUM 42" DEPTH OF COVER PER UDACS SECTION 2.08

NOTE:
VERIFY AND LOCATE ALL EXISTING UTILITIES WITHIN THE PROJECT WORK AREA.

NOTE:
INSTALL PIPELINE MARKER BALLS IN TRENCH ABOVE EACH HORIZONTAL ELBOW FITTING, PER UDACS PLATE No. 15

UTILITY CROSSING NOTE:
ALL SEWER/STORM DRAINS CROSSING WATER LINES MUST CONFORM TO SECTION 2.22 OF THE UNIFORM DESIGN AND CONSTRUCTION STANDARDS FOR POTABLE WATER SYSTEMS (UDACS) FOR WATER AND STORM MAIN CROSSINGS AND CLEARANCES.

WATER MAIN JOINT DEFLECTION (PVC, 4"-24")
PVC PIPE SHALL BE DEFLECTED AT THE JOINT ONLY. THE MAXIMUM ALLOWABLE DEFLECTION SHALL BE ONE (1) DEGREE PER JOINT WITH A MINIMUM RADIUS OF CURVATURE OF 1,150 FEET, PER UDACS 2.07.01 AND 2.07.02.
FOR CHANGES IN DIRECTION EXCEEDING THE MAXIMUM ALLOWABLE JOINT DEFLECTION, FITTINGS SHALL BE USED.

PROJECT BENCHMARK
PROJECT DATUM: NORTH AMERICAN VERTICAL DATUM OF 1988 (NAVD88)
CITY OF LAS VEGAS BENCHMARK: 5LV90:19W4 2008 ADJUSTMENT (UPDATED 5/24/10) NAVD88 ELEVATION: 857.697 METERS (2813.96 FEET)
RIVET AND PLATE CONCRETE PAD (LVVWD) 100'SE HUALAPAI WAY AND DEER SPRINGS.

ENGINEER DISCLAIMER NOTE:
UTILITY LOCATIONS SHOWN HEREON ARE APPROXIMATE ONLY. IT SHALL BE THE CONTRACTOR'S RESPONSIBILITY TO DETERMINE THE EXACT HORIZONTAL AND VERTICAL LOCATION OF ALL EXISTING UNDERGROUND AND OVERHEAD UTILITIES AND NOTIFY THE DESIGN ENGINEER IMMEDIATELY OF ANY DISCREPANCIES PRIOR TO COMMENCING CONSTRUCTION. NO REPRESENTATION IS MADE THAT ALL EXISTING UTILITIES ARE SHOWN HEREON. THE ENGINEER ASSUMES NO RESPONSIBILITY FOR UTILITIES NOT SHOWN OR UTILITIES NOT SHOWN IN THEIR PROPER LOCATION.

BASIS OF BEARINGS
GRID NORTH AS DEFINED BY THE CENTRAL MERIDIAN OF THE NEVADA COORDINATE REFERENCE SYSTEM (NCRS), LAS VEGAS ZONE, NORTH AMERICAN DATUM OF 1983; SAID MERIDIAN BEING COINCIDENT WITH 114°58' WEST OF THE GREENWICH MERIDIAN.
LINEAR UNIT: US SURVEY FOOT (FTUS)
DATUM (REFERENCE FRAME): NAD 1983 (CORS 2011) EPOCH 2010
SYSTEM: NEVADA COORDINATE REFERENCE SYSTEM (NCRS)
ZONE: LAS VEGAS
PROJECTION: TRANSVERSE MERCATOR
STANDARD PARALLEL (AND LATITUDE OF GRID ORIGIN): 36°15'00"N
LONGITUDE OF CENTRAL MERIDIAN: 114°58'00"W
NORTHING AT GRID ORIGIN: 200,000,000 M (656,166,667 FTUS)
EASTING AT CENTRAL MERIDIAN: 100,000,000 M (328,083,333 FTUS)
SCALE FACTOR ON CENTRAL MERIDIAN: 1.0001 (EXACT)

NOTES:
1. ALL DISTANCES AND BEARINGS SHOWN HEREON ARE PROJECTED (GRID) VALUES BASED ON THE PRECEDING PROJECTION DEFINITION. THE PROJECTION WAS DEFINED SUCH THAT PROJECTED (GRID) DISTANCES ARE EQUIVALENT TO "GROUND" DISTANCES IN THE PROJECT AREA.
2. GRID BEARINGS SHOWN HEREON (OR IMPLIED BY GRID COORDINATES) DO NOT EQUAL GEODETIC BEARINGS DUE TO MERIDIAN CONVERGENCE.

APPROVALS:
APPROVED FOR CONSTRUCTION
Dishar B. J. Smith
LAS VEGAS VALLEY WATER DISTRICT ENGINEERING SERVICES MANAGER
DATE 9/18/14 PROJECT 122759
LVVWD APPROVED FIRE FLOW 1500 GPM AT 20 PSI RESIDUAL

7	6	5	4	3	2	1
REV	DATE	BY	DATE	BY	DATE	BY

CITY OF LAS VEGAS

RYLAND HOMES
8925 W. RUSSELL ROAD, SUITE 200
LAS VEGAS, NV 89148
(702) 360-1500

2727 SOUTH RAINBOW BOULEVARD
LAS VEGAS, NEVADA 89146-5148
PH: (702) 973-7550 FAX: (702) 362-2597 WEB: WWW.VTNVY.COM
CONSULTING ENGINEERS • PLANNERS • LAND SURVEYORS

SEWER PLAN & PROFILE
CONQUISTADOR STREET
STA: 10+00.00-15+00.00

BRISTLE FALLS
UNIT 2

DRAWN BY: LHM FEB 2014
DESIGNED BY: DMG FEB 2014
CHECKED BY: AY FEB 2014
PROJECT NO: 7919
SCALE: 1"=30' HORZ.
1"=3' VERT.

EXPIRES 08-30-16

PROFESSIONAL ENGINEER STATE OF NEVADA
AARON M. JAMACHKA
LICENSE NO. 15079

SHEET **SS2**
11 OF 19 SHEETS
DRAWING NO. 1074494-2

HTE 14-1769
H#53328