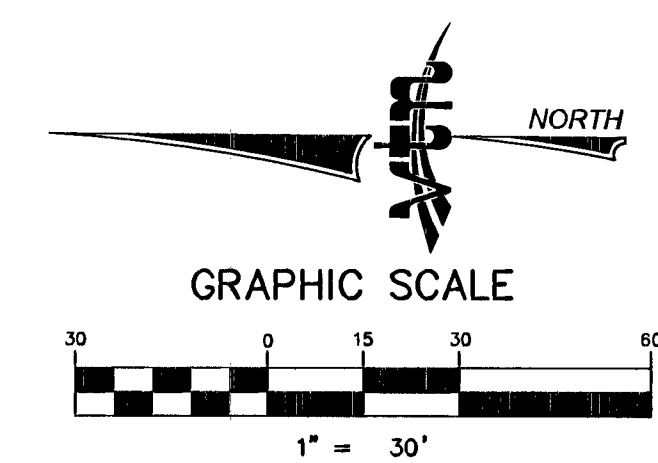
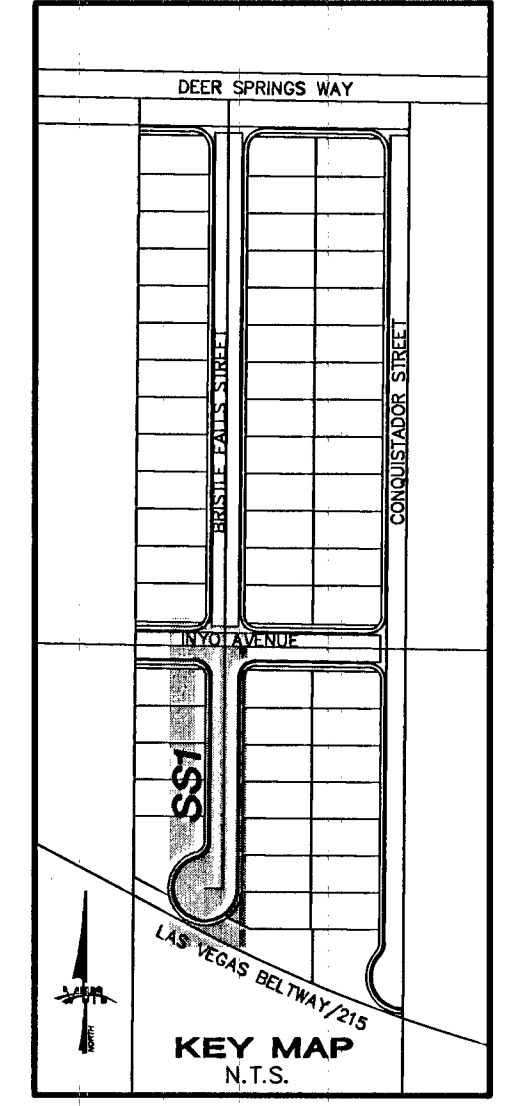
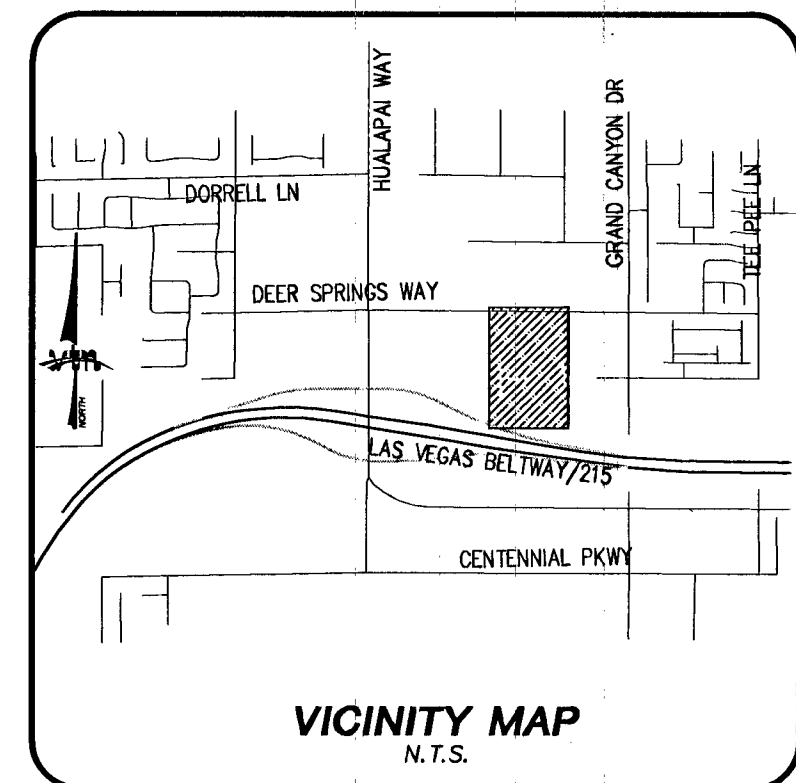


SEWER CONNECTION NOTE:
 ONE OR MORE SEGMENTS OF THE DOWNSTREAM SEWER SYSTEM THAT WILL SERVE THIS PROJECT HAS NOT BEEN COMPLETED AND/OR ACCEPTED FOR MAINTENANCE BY THE CITY OF LAS VEGAS. ANY WORK DONE ON THIS PROJECT PRIOR TO THE COMPLETION AND/OR ACCEPTANCE OF THE DOWNSTREAM SEWER SYSTEM(S) SHALL BE DONE AT THE DEVELOPER'S OWN RISK. THE CITY OF LAS VEGAS RESERVES THE RIGHT TO PREVENT THE PHYSICAL CONNECTION OF THIS PROJECT INTO THE DOWNSTREAM SEWER SYSTEM UNTIL ALL SEGMENTS HAVE BEEN COMPLETED AND ACCEPTED FOR MAINTENANCE, OR UNTIL SUCH TIME AS THEY ARE DEEMED AVAILABLE FOR SERVICE.

Call before you Dig
 1-702-731-1231
 CLARK COUNTY TRAFFIC DIVISION
 LAS VEGAS AREA COMPUTED TRAFFIC CENTER

Call before you Dig
 Avoid cutting underground utility lines. It's costly.
 CALL 811
 OR CLARK COUNTY TRAFFIC DIVISION
 1-800-227-2800

Call before you Overhead
 1-702-227-2929
 Avoid overhead power line contact. It's costly.



ALL SEWER/STORM DRAINS CROSSING WATER LINES MUST CONFORM TO SECTION 2.22 OF THE UNIFORM DESIGN AND CONSTRUCTION STANDARDS FOR POTABLE WATER SYSTEMS (UDACS) FOR WATER AND STORM MAIN CROSSINGS AND CLEARANCES.

UTILITY CROSSING NOTE:
 ALL SEWER/STORM DRAINS CROSSING WATER LINES MUST CONFORM TO SECTION 2.22 OF UNIFORM DESIGN AND CONSTRUCTION STANDARDS FOR POTABLE WATER SYSTEMS (UDACS) FOR WATER AND STORM MAIN CROSSINGS AND CLEARANCES.

ENGINEER DISCLAIMER NOTE:
 UTILITY LOCATIONS SHOWN HEREON ARE APPROXIMATE ONLY. IT SHALL BE THE CONTRACTOR'S RESPONSIBILITY TO DETERMINE THE EXACT HORIZONTAL AND VERTICAL LOCATION OF ALL EXISTING UNDERGROUND AND OVERHEAD UTILITIES AND NOTIFY THE DESIGN ENGINEER IMMEDIATELY OF ANY DISCREPANCIES PRIOR TO COMMENCING CONSTRUCTION. NO REPRESENTATION IS MADE THAT ALL EXISTING UTILITIES ARE SHOWN HEREON. THE ENGINEER ASSUMES NO RESPONSIBILITY FOR UTILITIES NOT SHOWN OR UTILITIES NOT SHOWN IN THEIR PROPER LOCATION.

ALL NEW WATER MAIN TO HAVE MINIMUM 42" DEPTH OF COVER PER UDACS SECTION 2.08

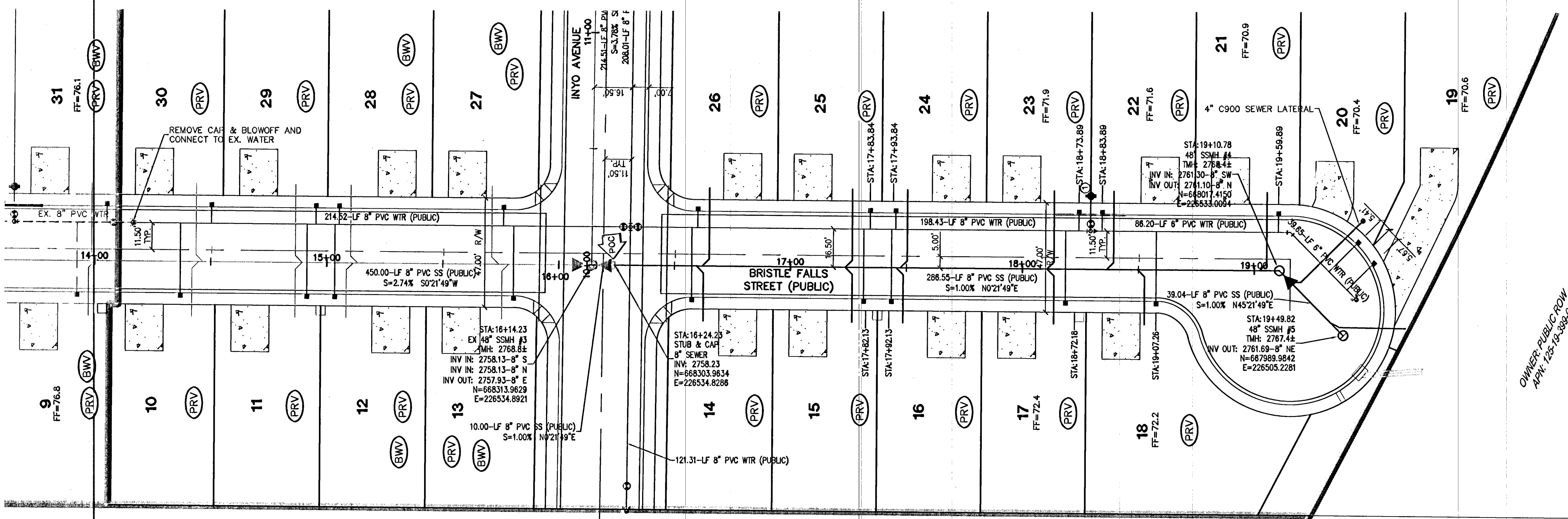
NOTE:
 VERIFY AND LOCATE ALL EXISTING UTILITIES WITHIN THE PROJECT WORK AREA.

NOTE:
 INSTALL PIPELINE MARKER BALLS IN TRENCH ABOVE EACH HORIZONTAL ELBOW FITTING, PER UDACS PLATE No. 15

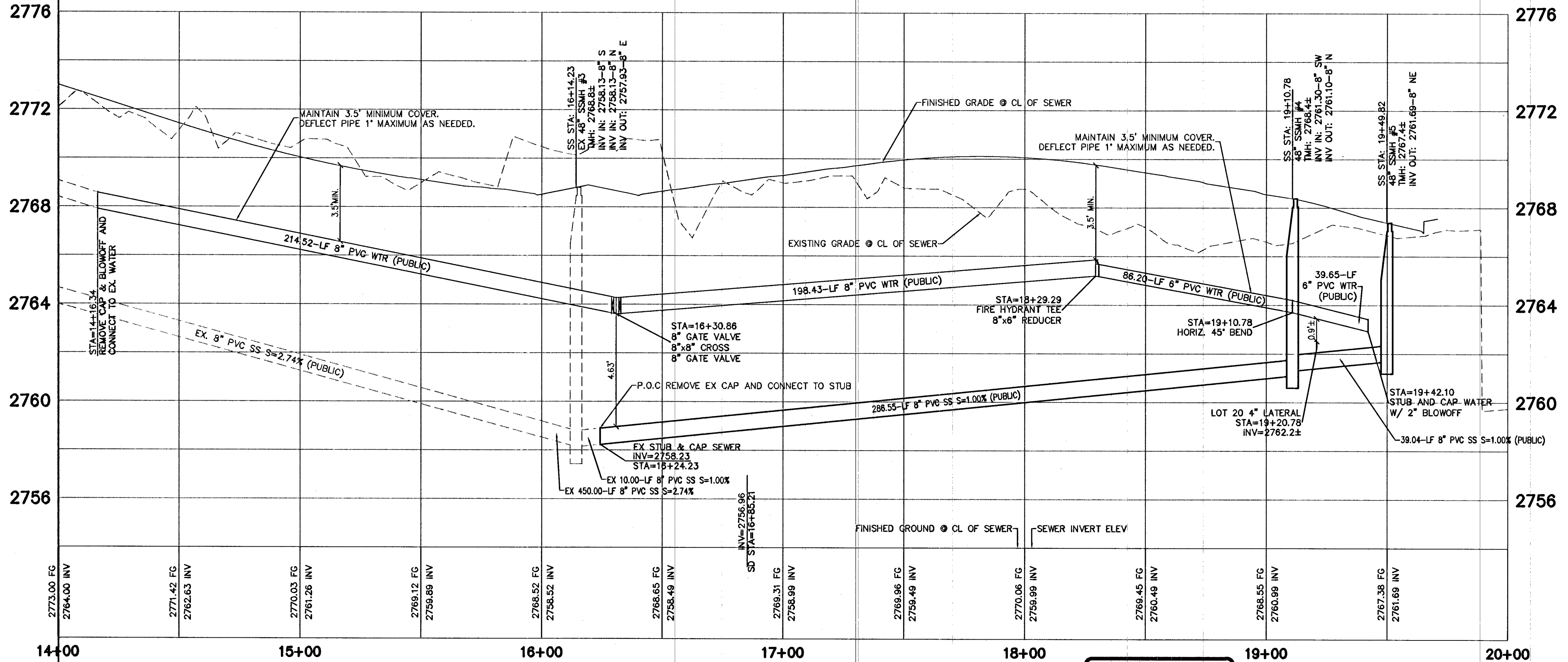
PROJECT BENCHMARK
 PROJECT DATUM: NORTH AMERICAN VERTICAL DATUM OF 1988 (NAV88)
 CITY OF LAS VEGAS BENCHMARK: 5LV90:19W4 2008 ADJUSTMENT (UPDATED 5/24/10) NAV88 ELEVATION: 857.697 METERS (2813.96 FEET)
 RIVET AND PLATE CONCRETE PAD (L.V.V.M.) 100'SE HUALAPAI WAY AND DEER SPRINGS.

WATER MAIN JOINT DEFLECTION (PVC, 4" x 24")
 PVC PIPE SHALL BE DEFLECTED AT THE JOINT ONLY. THE MAXIMUM ALLOWABLE DEFLECTION SHALL BE ONE (1) DEGREE PER JOINT WITH A MINIMUM RADIUS OF CURVATURE OF 1,150 FEET, PER UDACS 2.07.01 AND 2.07.02.
 FOR CHANGES IN DIRECTION EXCEEDING THE MAXIMUM ALLOWABLE JOINT DEFLECTION, FITTINGS SHALL BE USED.

BASIS OF BEARINGS
 GRID NORTH AS DEFINED BY THE CENTRAL MERIDIAN OF THE NEVADA COORDINATE REFERENCE SYSTEM (NCRS), LAS VEGAS ZONE, NORTH AMERICAN DATUM OF 1983; SAID MERIDIAN BEING COINCIDENT WITH 114°58' WEST OF THE GREENWICH MERIDIAN.
 LINEAR UNIT: US SURVEY FOOT (FTUS)
 DATUM (REFERENCE FRAME): NAD 1983 (GORS 2011) EPOCH 2010
 SYSTEM: NEVADA COORDINATE REFERENCE SYSTEM (NCRS)
 ZONE: LAS VEGAS
 PROJECTION: TRANSVERSE MERCATOR
 STANDARD PARALLEL (AND LATITUDE OF GRID ORIGIN): 36°15'00"N
 LONGITUDE OF CENTRAL MERIDIAN: 114°58'00"W
 NORTHING AT GRID ORIGIN: 200,000,000 M (656,166,667 FTUS)
 EASTING AT CENTRAL MERIDIAN: 100,000,000 M (328,083,333 FTUS)
 SCALE FACTOR ON CENTRAL MERIDIAN: 1.0001 (EXACT)
 NOTES:
 1. ALL DISTANCES AND BEARINGS SHOWN HEREON ARE PROJECTED (GRID) VALUES BASED ON THE PRECEDING PROJECTION DEFINITION. THE PROJECTION WAS DEFINED SUCH THAT PROJECTED (GRID) DISTANCES ARE EQUIVALENT TO "GROUND" DISTANCES IN THE PROJECT AREA.
 2. GRID BEARINGS SHOWN HEREON (OR IMPLIED BY GRID COORDINATES) DO NOT EQUAL GEODETIC BEARINGS DUE TO MERIDIAN CONVERGENCE.



BRISTLE FALLS SEWER (PUBLIC)



PROFILE SCALES:
 HORIZ. = 1" = 30'
 VERT. = 1" = 3'

APPROVALS:
 APPROVED FOR CONSTRUCTION
 DISHARIBER
 LAS VEGAS VALLEY WATER DISTRICT ENGINEERING SERVICES MANAGER
 DATE 9/18/14 PROJECT 122759
 L.V.V.M.D. APPROVED FIRE FLOW 1500 GPM AT 20 PSI RESIDUAL

RYLAND HOMES
 8925 W. RUSSELL ROAD, SUITE 200
 LAS VEGAS, NV, 89148
 (702) 360-7500

SEWER PLAN & PROFILE
BRISTLE FALLS STREET
STA: 14+00.00-19+49.82

BRISTLE FALLS UNIT 2

CITY OF LAS VEGAS

2727 SOUTH RAINBOW BOULEVARD
 LAS VEGAS, NEVADA 89146-9148
 PH: (702) 973-7550 FAX: (702) 362-2587 WEB: WWW.VTVM.COM
 CONSULTING ENGINEERS • PLANNERS • LAND SURVEYORS

REVISION	DATE	BY
7		
6		
5		
4		
3		
2		
1		

DRAWN BY: LHM FEB 2014
 DESIGNED BY: DMO FEB 2014
 CHECKED BY: AY FEB 2014
 PROJECT NO: 122759
 SCALE: 1" = 30' HORIZ.
 1" = 3' VERT.

EXPIRES 06-30-16

PROFESSIONAL ENGINEER SEAL
 AARON M. YAMACHUKI
 LICENSE NO. 15079
 9/15/14

SHEET **SS1**
 10 OF 19 SHEETS
 DRAWING NO. 1074494-2

HTE 14-1768
 H#53328