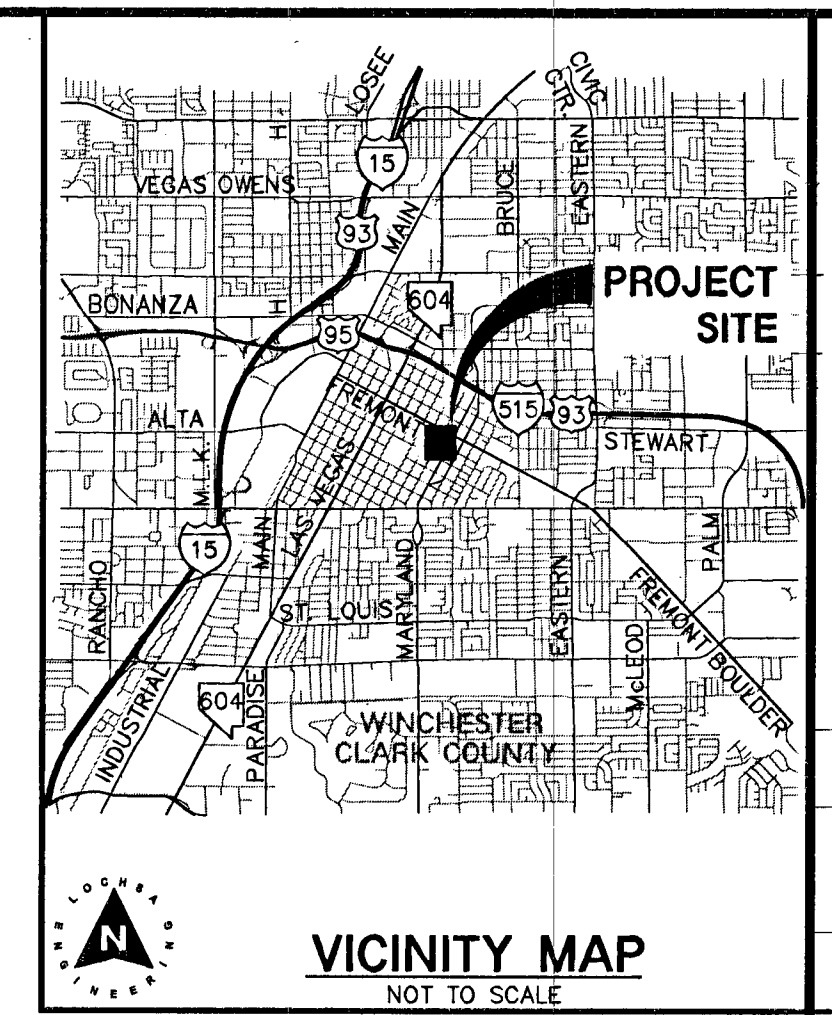
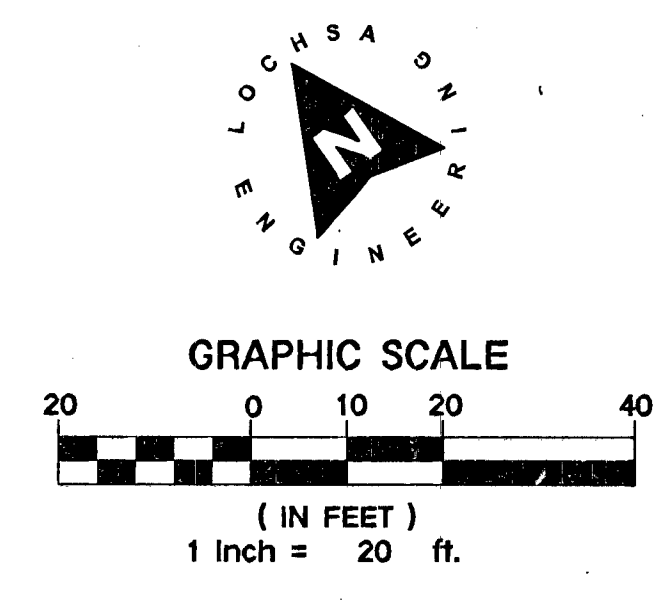
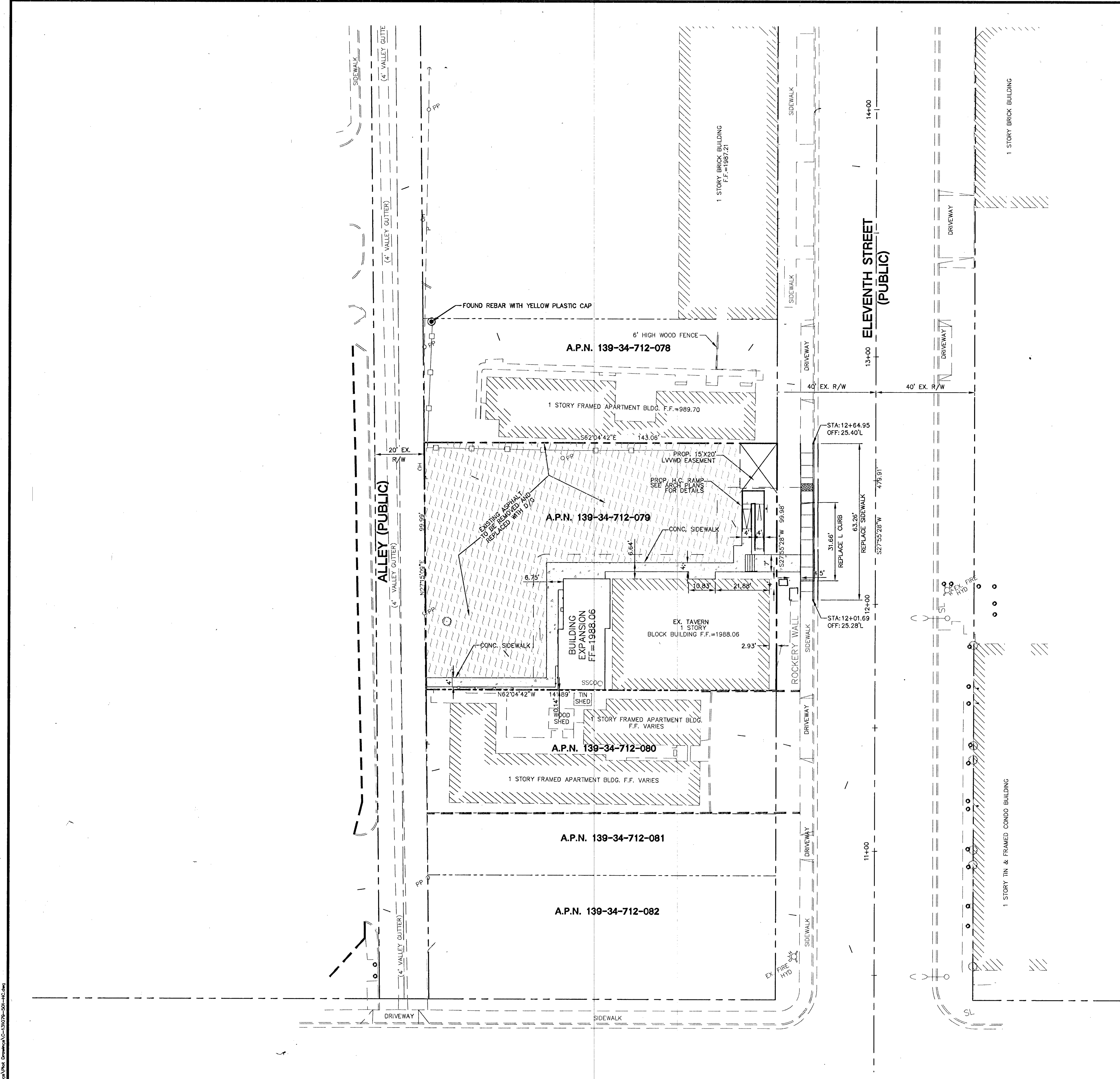


3/2/2014 11:10 AM
E:\Projects\139-34-712-079\139-34-712-079.dwg



REVISION:	DATE:	BY:	DESCRIPTION:

6345 South Jones Blvd
Suite 100
Las Vegas, NV 89118
Tel: (702) 365-8317
Fax: (702) 365-8317
www.lochsa.com

**HORIZONTAL CONTROL PLANS
SHEET 1**

**BUNKHOUSE RENOVATIONS
124 11TH STREET
LAS VEGAS, NEVADA**

SHEET	131079
PROJECT No.:	131079
DATE:	03-03-14
SCALE:	1"=20'
DRAWN BY:	C.W.
DESIGNED BY:	C.W.
CHECKED BY:	G.M.

A.P.N.:
139-34-712-079

BASIS OF BEARINGS:
THE CENTERLINE OF 11TH STREET, AS NORTH 27°55'28" EAST PER PLAT BOOK 128, PAGE 98 FILED IN THE OFFICE OF THE CLARK COUNTY NEVADA RECORDER AS BOOK 2, PAGE 54, OFFICIAL RECORDS

BENCHMARK:
CITY OF LAS VEGAS BENCHMARK 13LV0135W4, BEING A RIVET AND PLATE IN THE TOP OF CURB AT THE SOUTHEAST CORNER OF FREMONT STREET AND ELEVENTH STREET. ELEVATION = 605.1877 METERS (1985.52 FEET) (NAVD '88)

SAFETY ALERT

Call Before You Overhead

1-702-227-2929

1-702-432-5300

800-227-2600

NOTE:
LOCHSA ENGINEERING ASSUMES NO RESPONSIBILITY FOR EXISTING UTILITY LOCATIONS AND ELEVATIONS. THE UTILITIES SHOWN ON THIS PLAN ARE FROM THE BEST AVAILABLE INFORMATION. IT IS THE CONTRACTOR'S RESPONSIBILITY TO FIELD VERIFY THE LOCATION AND ELEVATION OF ALL UTILITIES, INCLUDING BUT NOT LIMITED TO, THE WATER, FIRE, SANITARY SEWER, STORM SEWER, TELEPHONE, POWER, GAS, AND IRRIGATION LINES PRIOR TO THE COMMENCEMENT OF CONSTRUCTION. IF CONFLICT EXISTS IN THE FIELD, THE CONTRACTOR IS TO NOTIFY THE PROJECT ARCHITECT, OWNER'S REPRESENTATIVE AND THE PROJECT ENGINEER IMMEDIATELY.

SEAL

GUY M. MORRIS
REGISTERED PROFESSIONAL ENGINEER
No. 14528
Exp. 12-31-15
01-23-13-3-14

LEGEND	CL OR SURVEY LINE	EASEMENT LINE	DESCRIPTION:	CONTOUR LINES	EDGE OF PAVEMENT	"A" TYPE CURBS	"L" TYPE CURBS	WALLS	FENCES	AC PAVEMENT	CONCRETE	SPOT ELEVATIONS	SIGNS	MANHOLE W/ DESCRIPTION	MANHOLE DESCRIPTIONS	FIRE HYDRANTS	GATE VALVES	REDUCERS	CLEAN OUTS	UTILITY BOX OR VAULT	BACKWATER VALVES	100w HPS STREETLIGHTS	150w HPS STREETLIGHTS	200w HPS STREETLIGHTS	250w HPS STREETLIGHTS
	PROPERTY LINE	SAWOUT LINE	EXISTING:	(---2210---	---	---	---	---	---	---	---	12-34 BC	---	⊙	⊙	⊙	⊙	⊙	⊙	⊙	(BWV)	(BWV)	(BWV)	(BWV)	(BWV)
	ROW LINE	SCARP LINE	PROPOSED:	(---2122---	---	---	---	---	---	---	---	12-34 BC	---	⊙	⊙	⊙	⊙	⊙	⊙	⊙	(BWV)	(BWV)	(BWV)	(BWV)	(BWV)

SHEET No. **C5.01**
SHEET 6 OF 6
HM52713
107V6232