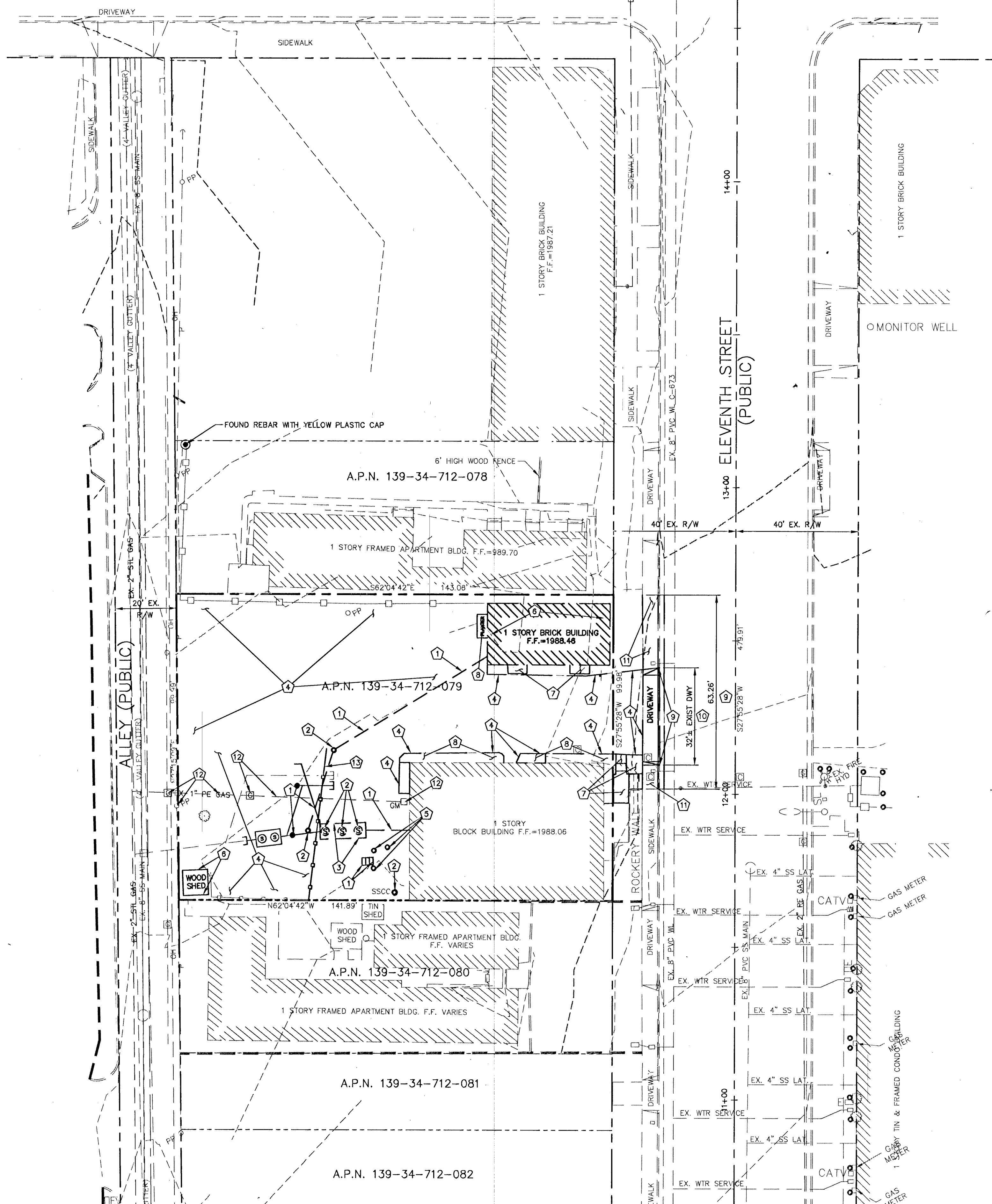
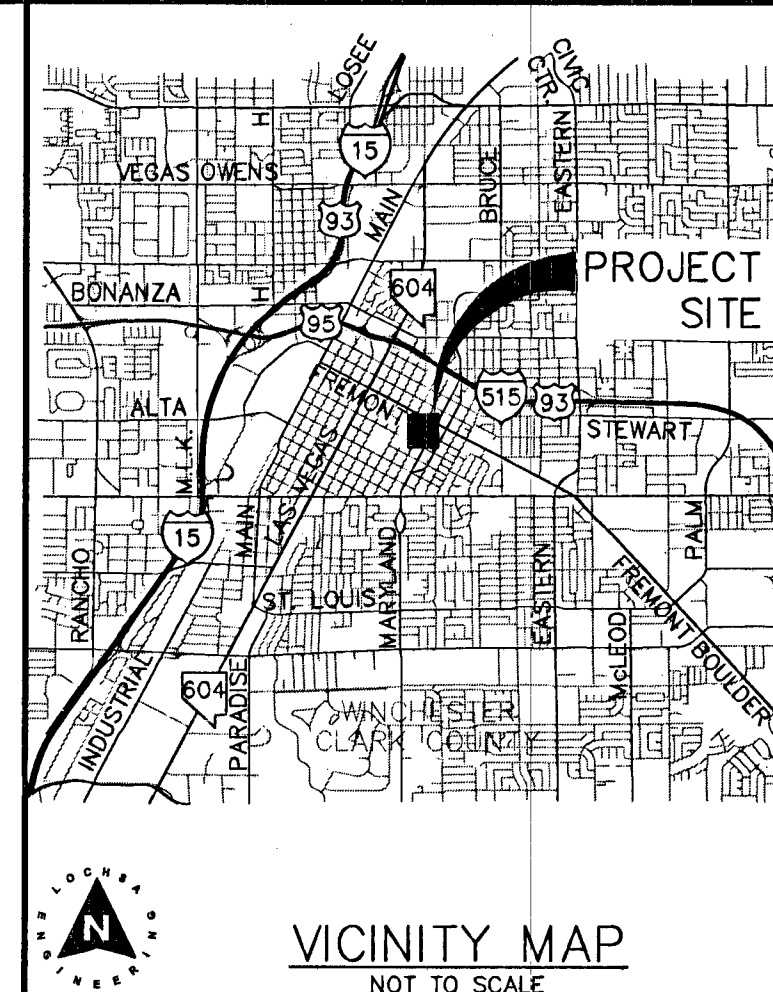
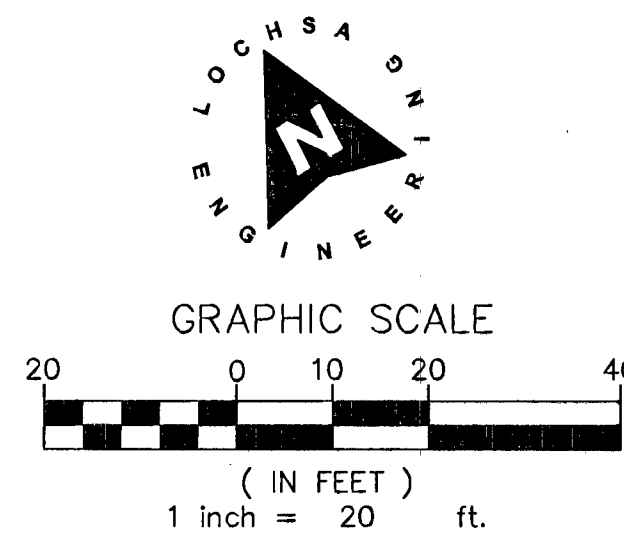


FREMONT STREET

S62°04'40"E 391.18'

EP: 14+79.91 FOUND AL CAP, PLS 16224



DEMOLITION NOTES:

- 1. NOT ALL NOTES USED ON THIS SHEET
- 1. EX. SANITARY SEWER IMPROVEMENTS TO BE REMOVED OR ABANDONED PER D.C.S.W.C.S. SECTION 3.14.1 ABANDONMENT OF EXISTING FACILITIES.
- 2. EX. SANITARY SEWER MANHOLES AND CLEAN OUTS TO BE REMOVED PER D.C.S.W.C.S. SECTION 3.14.2 ABANDONMENT OF EXISTING FACILITIES.
- 3. REFER TO PLUMBING PLANS BY OTHERS FOR REMOVAL/RELOCATION OF EX. GREASE INTERCEPTOR.
- 4. EXISTING AC PAVEMENT TO BE REMOVED AND REPLACED
- 5. EXISTING BOLLARDS TO BE REMOVED.
- 6. EXISTING BUILDING TO BE REMOVED
- 7. EXISTING CONCRETE/STEPS TO BE REMOVED
- 8. EXISTING LANDSCAPE AREA TO BE REMOVED
- 9. EXISTING "L" TYPE CURB AND GUTTER TO BE REMOVED AND REPLACED
- 10. EXISTING DRIVEWAY TO BE REMOVED
- 11. EXISTING CONCRETE SIDEWALK TO BE REMOVED AND REPLACED
- 12. EXISTING POWER POLES AND GAS LINE TO PROTECT IN PLACE
- 13. REMOVE EXISTING FENCE

NOTE:

CONTRACTOR TO INCLUDE COST OF UNDERGROUND UTILITY DETECTION COMPANY TO LOCATE AND MARK ALL EXISTING UTILITIES PRIOR TO ANY DEMOLITION OR EXCAVATION. ENGINEER TO BE PROVIDED WITH AS-BUILT SKETCH OF EXISTING UTILITIES, AND IS TO BE NOTIFIED IMMEDIATELY OF ANY POTENTIAL CONFLICTS WITH PROPOSED UTILITIES AND/OR FINISHED GRADES.

NOTE:

LOCHSA ENGINEERING ASSUMES NO RESPONSIBILITY FOR EXISTING UTILITY LOCATIONS AND ELEVATIONS. THE UTILITIES SHOWN ON THIS PLAN ARE FROM THE BEST AVAILABLE INFORMATION. IT IS THE CONTRACTOR'S RESPONSIBILITY TO FIELD VERIFY THE LOCATION AND ELEVATION OF ALL UTILITIES, INCLUDING BUT NOT LIMITED TO, THE WATER, FIRE, SANITARY SEWER, STORM SEWER, TELEPHONE, POWER, GAS, AND IRRIGATION LINES PRIOR TO THE COMMENCEMENT OF CONSTRUCTION. IF CONFLICT EXISTS IN THE FIELD, THE CONTRACTOR IS TO NOTIFY THE PROJECT ARCHITECT, OWNER'S REPRESENTATIVE AND THE PROJECT ENGINEER IMMEDIATELY.

A.P.N.: 139-34-712-079

BASIS OF BEARINGS:

THE CENTERLINE OF 11TH STREET, AS NORTH 27°55'28" EAST PER PLAT BOOK 126, PAGE 98 FILED IN THE THE OFFICE OF THE CLARK COUNTY NEVADA RECORDER AS BOOK 2, PAGE 54, OFFICIAL RECORDS

BENCHMARK:

CITY OF LAS VEGAS BENCHMARK 13LV0135W4, BEING A RIVET AND PLATE IN THE TOP OF CURB AT THE SOUTHEAST CORNER OF FREMONT STREET AND ELEVENTH STREET. ELEVATION = 605.1877 METERS (1985.52 FEET) (NAVD '88)

SAFETY ALERT

Call before you dig. Before you dig. Call 811. Call before you dig. Before you dig. Call 811.

Call before you dig. Avoid cutting underground utility lines. It's costly.



1-702-227-2929. 1-702-432-5300. 1-800-227-2600

CL OR SURVEY LINE	EASEMENT LINE	DESCRIPTION:	CONTOUR LINES	EDGE OF PAVEMENT	"A" TYPE CURBS	"L" TYPE CURBS	WALLS	FENCES	AC PAVEMENT	CONCRETE	SPOT ELEVATIONS	SIGNS	MANHOLE W/ DESCRIPTION	MANHOLE DESCRIPTIONS	FIRE HYDRANTS	GATE VALVES	REDUCERS	CLEAN OUTS	UTILITY BOX OR VAULT	BACKWATER VALVES	100w HPS STREETLIGHTS	150w HPS STREETLIGHTS	200w HPS STREETLIGHTS	250w HPS STREETLIGHTS
PROPERTY LINE	SAWCUT LINE	EXISTING:	(---(2210)---		=====	=====	=====	=====	=====	=====	(12.34)	↑	⊙	⊙	⊙	⊙	⊙	⊙	⊙	⊙	⊙	⊙	⊙	⊙
ROW LINE	SCARP LINE	PROPOSED:	(---(2122)---		=====	=====	=====	=====	=====	=====	(12.34)	↑	⊙	⊙	⊙	⊙	⊙	⊙	⊙	⊙	⊙	⊙	⊙	⊙

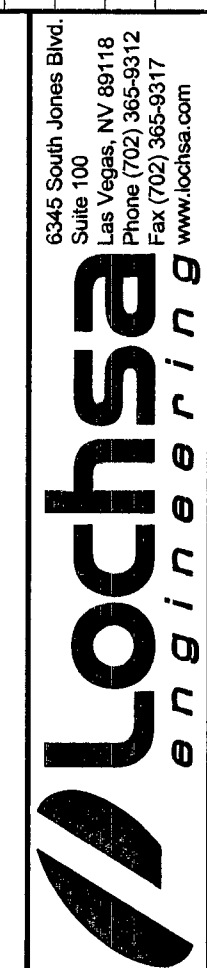
DEMOLITION PLANS
SHEET 1

BUNKHOUSE RENOVATIONS
124 11TH STREET
LAS VEGAS, NEVADA

PROJECT No.: 131079
DATE: 03-03-14
SCALE: 1"=20'
DRAWN BY: C.R.W.
DESIGNED BY: C.R.W.
CHECKED BY: G.M.M.

SEAL
GUY M. MORRIS
EXP. 12-31-15
CIVIL
No. 14536
03-03-14
SHEET No. C2.01
SHEET 3 OF 6

10716232



6345 South Jones Blvd.
Suite 100
Las Vegas, NV 89118
Tel: (702) 886-8712
Fax: (702) 886-8717
www.lochsa.com