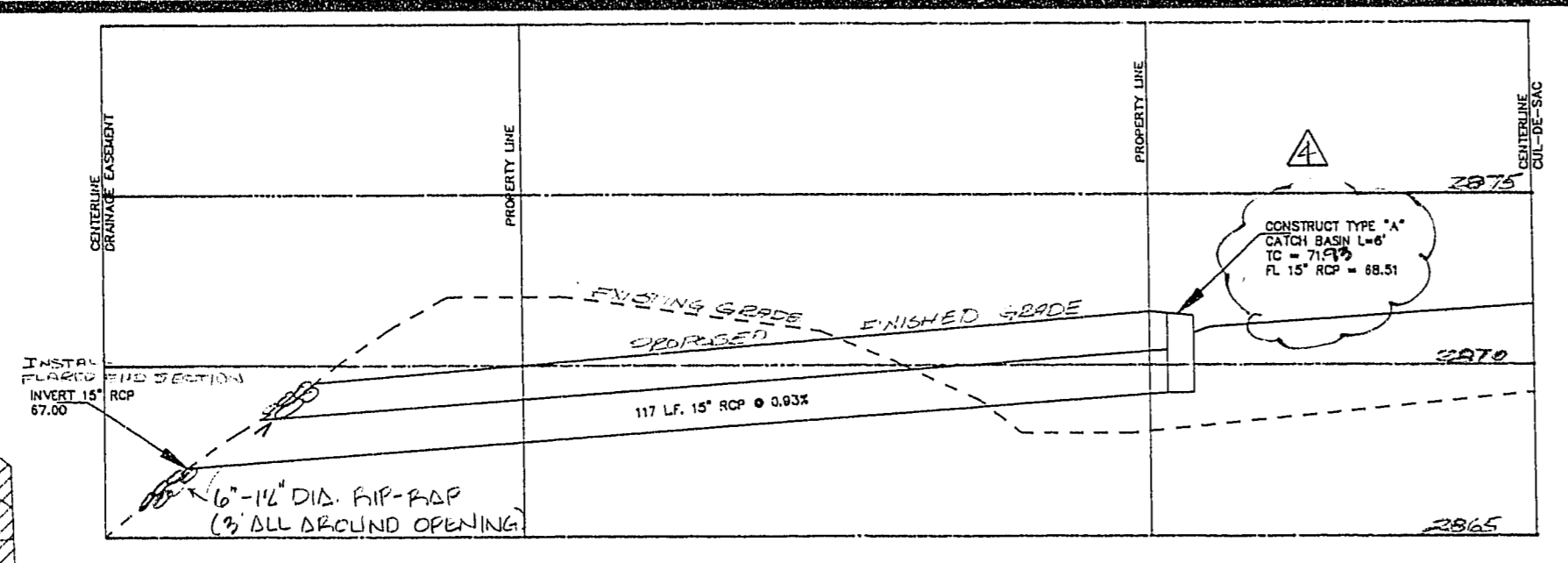
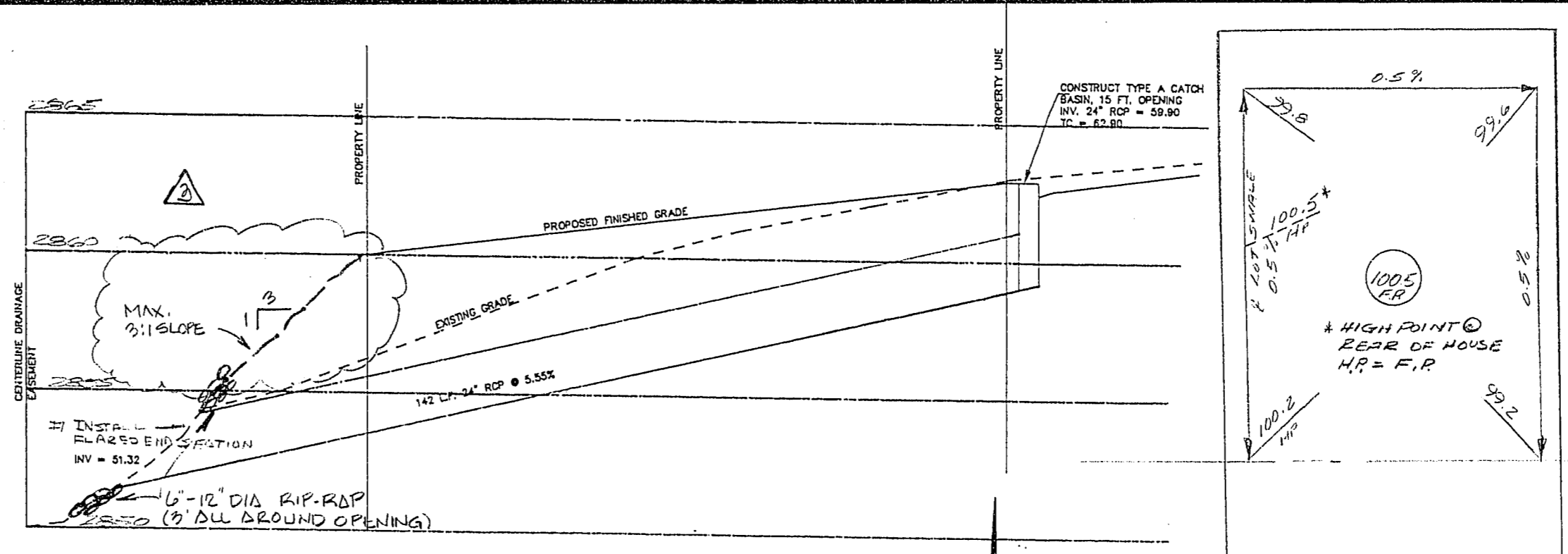


SHEET LOCATION MAP



SECTION C



SECTION B

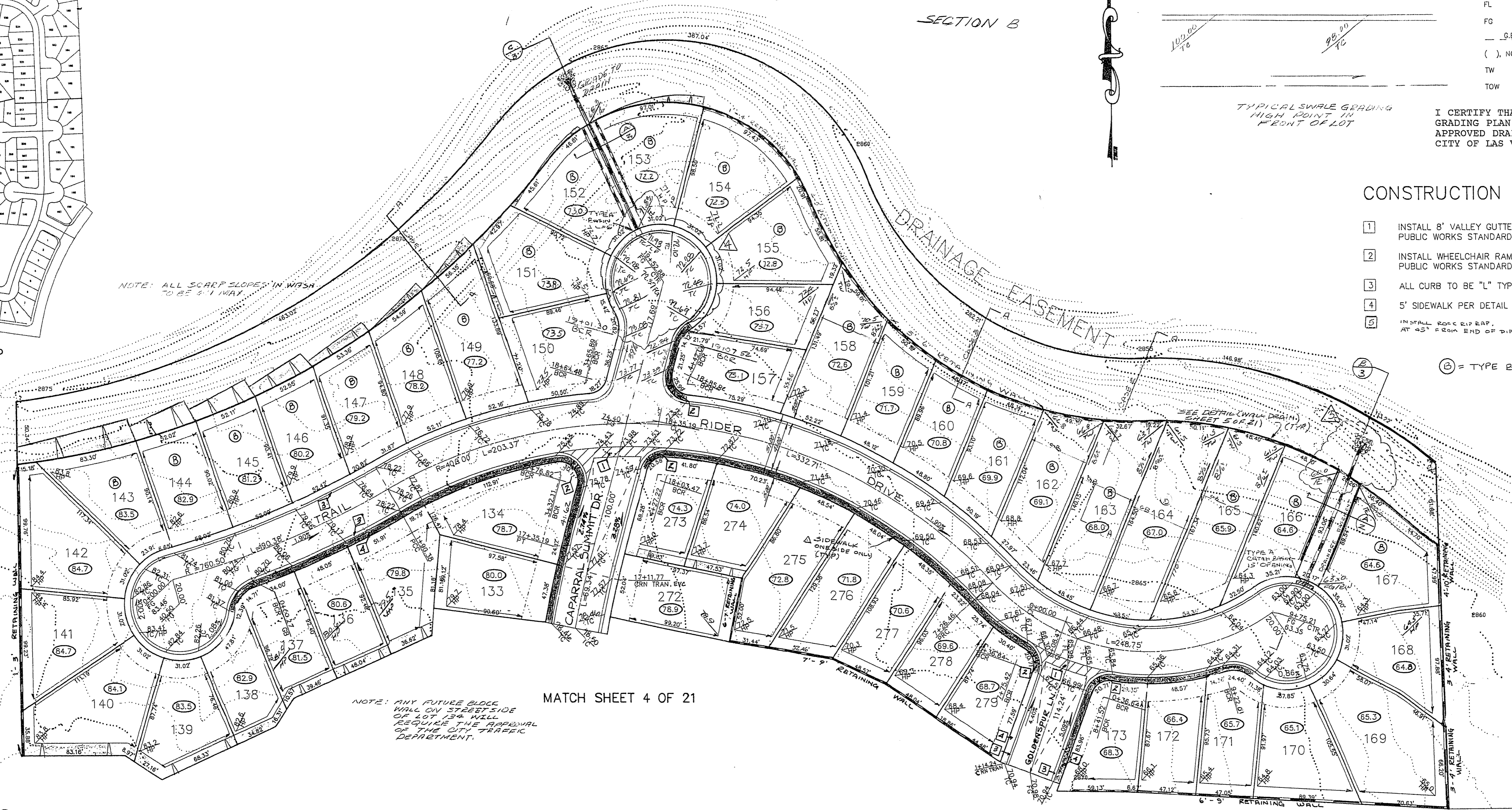
LEGEND

- 1 LOT/BUILDING NUMBER
- ① BLOCK NUMBER
- ===== EXISTING BLOCK FENCE
- ===== PROPOSED BLOCK FENCE
- R = 1.00% RATE AND DIRECTION OF FLOW
- EXISTING CONTOUR LINE
- BUILDING SETBACK LINE FRONT CORNER
- PAD SETBACK LINE FRONT CORNER
- DRAINAGE SWALE
- ▽ SCARP (2'HOR. : 1'VER. MAX)
- PAD ELEVATION
- 19.00 F.F. FINISH FLOOR ELEVATION
- TC TOP OF CURB ELEVATION
- FL FLOW LINE ELEVATION
- FG FINISH GRADE ELEVATION
- G.B. GRADE BREAK
- () NC EXISTING GROUND ELEVATION
- TW TOP OF SIDEWALK ELEVATION
- TOW TOP OF WALL ELEVATION

I CERTIFY THAT THIS GRADING PLAN IS IN CONFORMANCE WITH THE APPROVED DRAINAGE STUDY ON FILE AT THE CITY OF LAS VEGAS FOR THIS PROJECT.

CONSTRUCTION NOTES

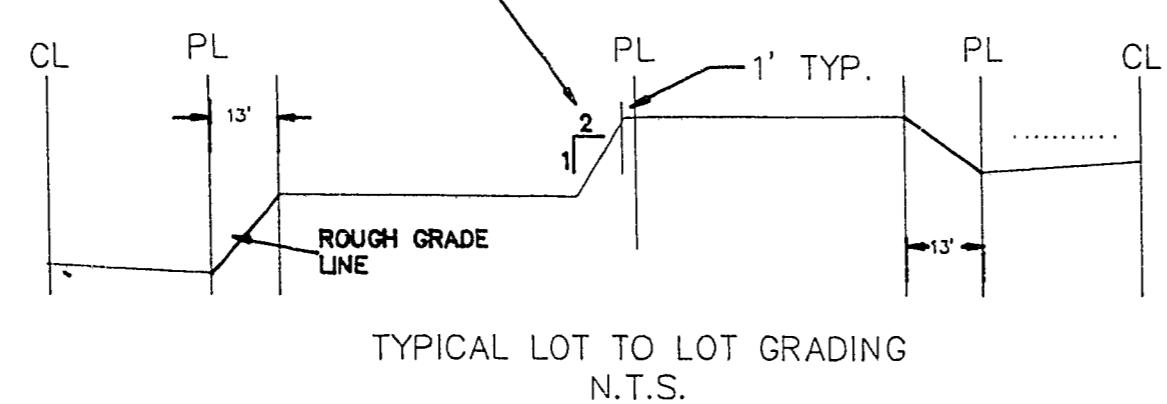
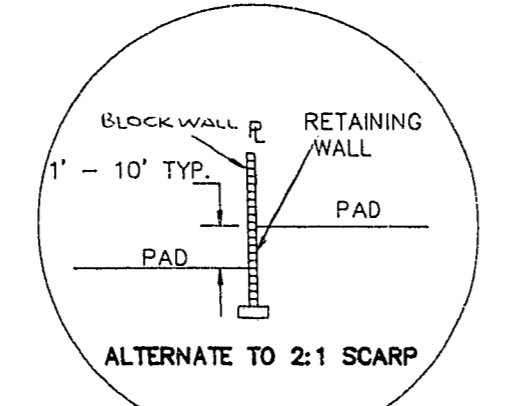
- 1 INSTALL 8" VALLEY GUTTER PER CLARK COUNTY PUBLIC WORKS STANDARD DRAWINGS #122.
- 2 INSTALL WHEELCHAIR RAMPS PER CLARK COUNTY PUBLIC WORKS STANDARD DRAWINGS #118.
- 3 ALL CURB TO BE "L" TYPE PER DETAIL ON SHEET 2 OF 14.
- 4 5' SIDEWALK PER DETAIL ON SHEET 2 OF 14.
- 5 INSTALL EDGE RIP-RAP FROM END OF PIPE TO 10' DOWNSTREAM AT 45° FROM END OF PIPE SEE GRADATION BELOW.



MATCH SHEET 4 OF 21

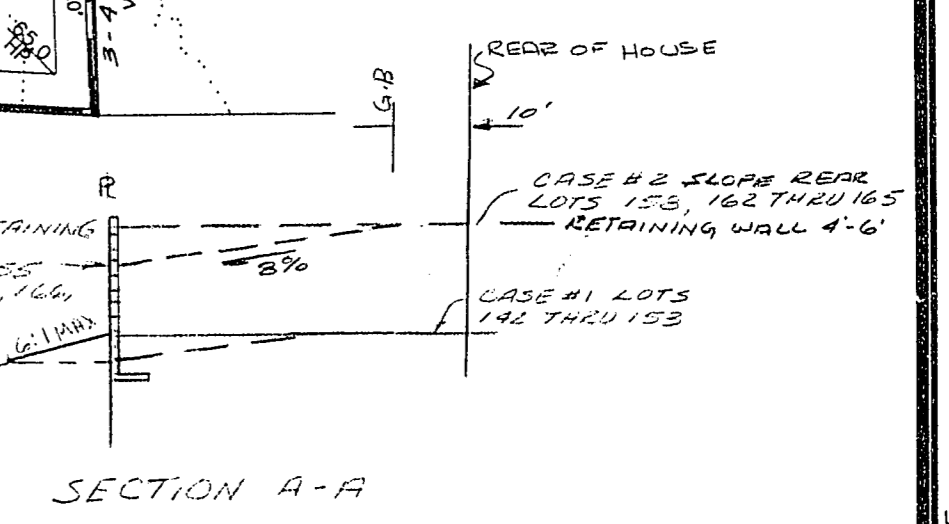
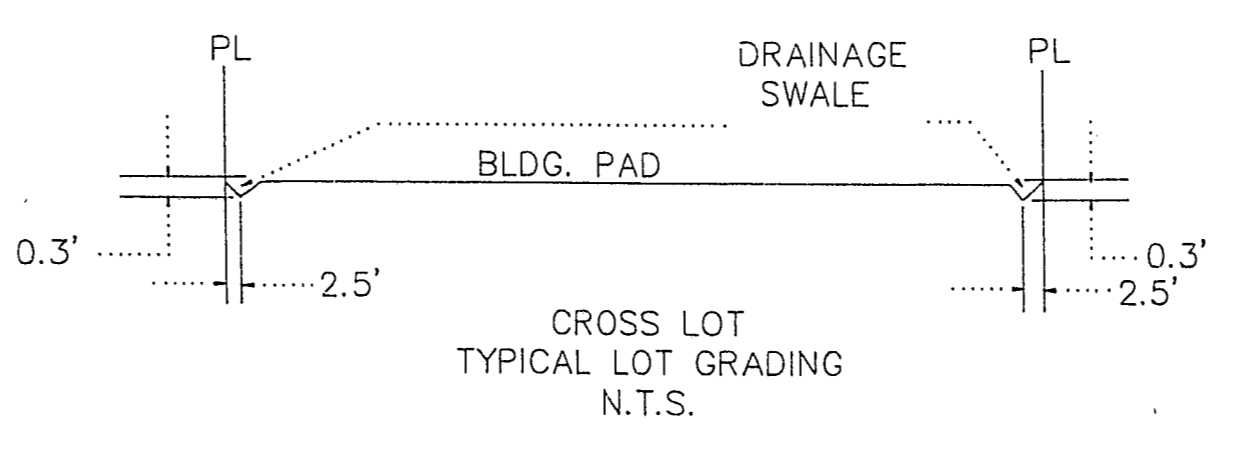
GENERAL NOTES

1. ALL DESIGN ELEVATIONS ARE TO THE ROUGH GRADE ELEVATION, AND ARE 0.30' LOW TO ALLOW FOR LANDSCAPING.
2. ALL FINAL GRADE ELEVATIONS ON THE OUTSIDE OF BUILDINGS SHALL BE A MINIMUM OF 8" LOWER THAN THE ESTABLISHED FINISH FLOOR ELEVATION, EXCEPT AT THE ENTRANCE OF THE BUILDING.
3. THE CONTRACTOR SHALL VERIFY ALL ASPECTS OF THESE PLANS AND REPORT ANY DISCREPANCIES TO THE ENGINEER PRIOR TO COMMENCEMENT OF ANY WORK.
4. ANY QUANTITIES SHOWN HEREON ARE FOR ESTIMATING ONLY AND ARE NOT TO BE USED FOR BIDDING.
5. THE CONTRACTOR SHALL FURNISH TO THE ENGINEER AS-BUILT DRAWINGS FOR UTILITY SERVICES AND HOOK-UPS.
6. REFER TO THE IMPROVEMENT PLANS FOR STREET SECTIONS, DETAILS AND NEW UTILITY LOCATIONS.
7. ALL GRADING SHALL CONFORM TO THE SOILS REPORT BY WESTERN TECHNOLOGIES NO. 4139J152



RIP RAP GRADATION.

% PASSING	SIZE
100%	9 - 12"
30%	4 - 8"
10%	2 - 5"
0%	2 - 3"



SECTION A-A

NOTICE 1
EXISTING UTILITIES SHOWN ON PLANS FOR THE CONVENIENCE OF THE CONTRACTOR ONLY. THE CONTRACTOR IS RESPONSIBLE FOR THE PROTECTION OF ALL UTILITIES. THE ENGINEER BEARS NO RESPONSIBILITY FOR UTILITIES NOT SHOWN OR SHOWN INCORRECTLY.

CALL BEFORE YOU Dig

1-800-227-2600
UNDERGROUND SERVICE (USA)

REVISION DESCRIPTION

NO.	DATE	BY	DESCRIPTION
1			ISSUED
2			REVISIONS FOR CITY COMMENTS
3			REVISIONS FOR CITY COMMENTS
4			REVISIONS FOR CITY COMMENTS
5			REVISIONS FOR CITY COMMENTS

DATE: 8/13/90

SOUTHWEST ENGINEERING
LAND PLANNING-MAPPING-DEVELOPMENT
1705 SOUTH SANDY BLVD., STE. E3
LAS VEGAS, NV 89102
PHONE (702) 368-9700

GRADING PLAN
ASCOT PARK

TITLE: PROJECT: WORK ORDER NO: 890619 DESIGN BY: CHILDS DATE: 5-90 SCALE: 1" = 50' SHEET 3 OF 21 SHEET