

EXISTING UTILITIES ARE LOCATED ON THE PLANS FOR THE CONVENIENCE OF THE CONTRACTOR ONLY. THE CONTRACTOR SHALL BEAR FULL RESPONSIBILITY FOR PROTECTION OF UTILITIES AND THE CITY BEARS NO RESPONSIBILITY FOR UTILITIES NOT SHOWN ON THE PLANS OR NOT IN THE LOCATION SHOWN ON THE PLANS.

SERVICE POINT (SEE NOTE 'A')
120/240 V. SINGLE PHASE 3 WIRE MULTIPLE WITH PHOTO ELECTRIC CONTROL. FOR DETAILS SEE STD. DWG. 5-252 A.

Construction Drawing
DATE FEB 20 1967

NOTES

All 11 gauge street lighting standards shall be 18 inches back of curb. All 7 gauge street lighting standards shall be 24 inches back of curb.

The locations of ends of all conduits in structures or terminating of curbs shall be marked by a "x" at least 3" high cut into the face of curb, gutter, or wall, directly above conduit.

Conduits shall be laid to a depth of not less than 18 inches below the curb grade in sidewalk areas and to a depth of not less than 24 inches below the finished surface in street areas, except that conduit may be laid to a depth of not less than 18 inches below the curb grade in curbed dividing strips.

All conduits for future use shall be cleaned, blown-out with compressed air and provided with a #9 AWG galvanized iron pull wire, 2 feet of pull wire shall be doubled back into conduit at each termination and the end of the conduit shall be capped.

Lighting system to be 120/240 Volt 60 cycle single phase 3 wire Multiple underground. Luminaires to be connected alternately to phase circuit "A" or "B" as indicated.

Fire Alarm conduit shall be identified by means of a continuous red painted stripe.

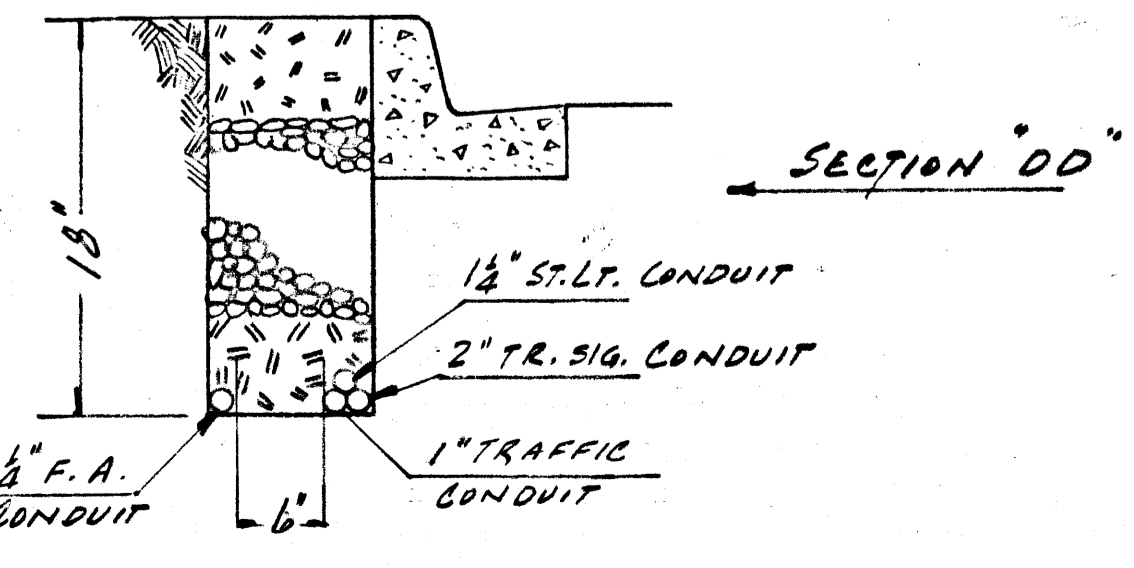
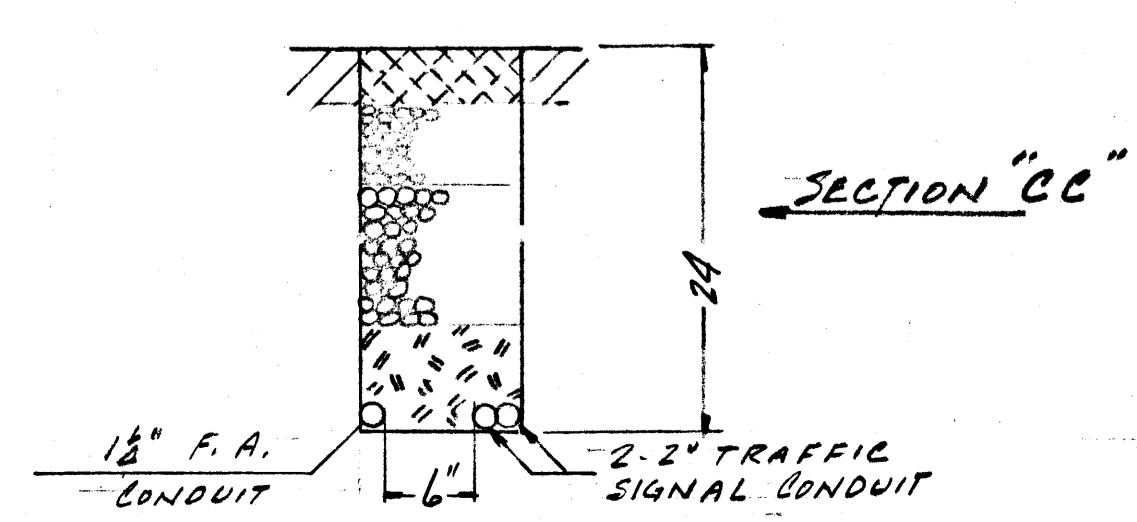
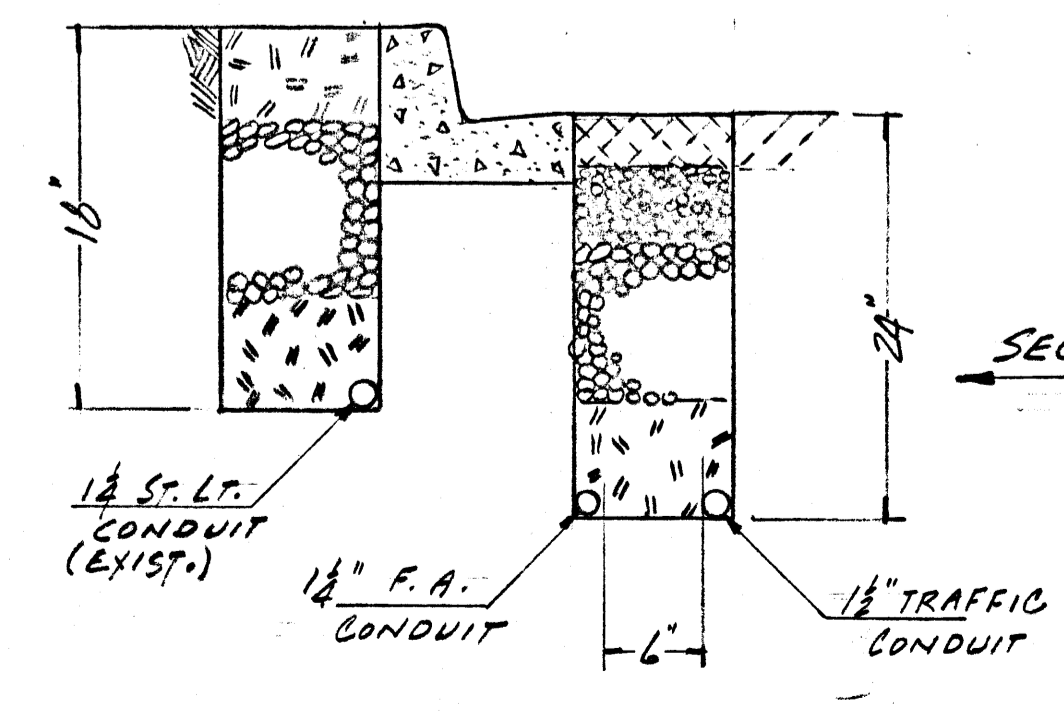
All conduits at limits of construction shall be stubbed, capped and located for future extension of conduit runs and "As Built" marked prints returned to the Electrical Engineer.

LEGEND

- 400 watt Mercury Vapor Luminaire
- 250 watt Mercury Vapor Luminaire
- 7 gauge Street Lighting Standard
- 11 gauge Street Lighting Standard
- Underground Street Lighting Integral conductor and Duct
- Underground Fire Alarm Conduit
- Pull Box
- FA - Foundation to be 48" deep
- FB - Foundation to be 60" deep

NOTE A - APPROVED LOCATION OF SERVICE POINT TO BE OBTAINED BY CONTRACTOR FROM NEVADA POWER CO

AS BUILT



APPROVED *[Signature]* 12-13-65
CITY ELECTRICIAN DATE

APPROVED *[Signature]* 12-14-65
NEVADA POWER CO DATE

APPROVED *[Signature]* 12-14-65
TRAFFIC ENGINEER DATE

REV 1 PRINT (ON FILE) 10-9-68 BY MURKIN 12-4-68

CITY OF LAS VEGAS NEVADA ENGINEERING DEPT.			
STREET LIGHTING, FIRE ALARM & TRAFFIC SIGNAL INTERSECTION 25TH ST. & STEWART			
NO. 155-0	DATE	SC. (H)	1" = 20'
DES. G.W. EVANS ELEC. ENGR.	12-3-65	SC. (V)	
DR. J.E. KLOPAEK	12-3-65	F. BK. NO.	
CHK. <i>[Signature]</i>	12-13-65	P.J.O. NO. 472	
APPROVED BY CITY ENGR. <i>[Signature]</i>	12-14-65	DRAWING NO.	207-V121