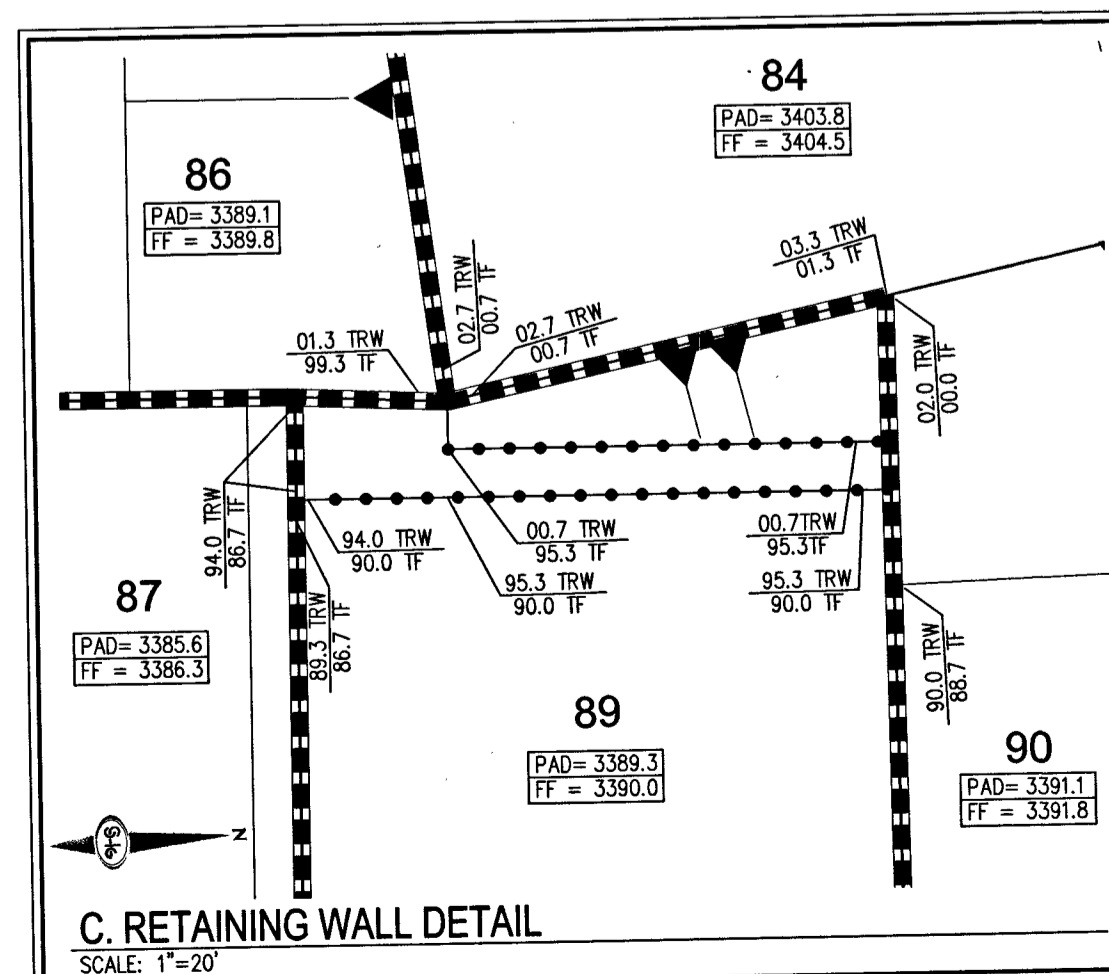
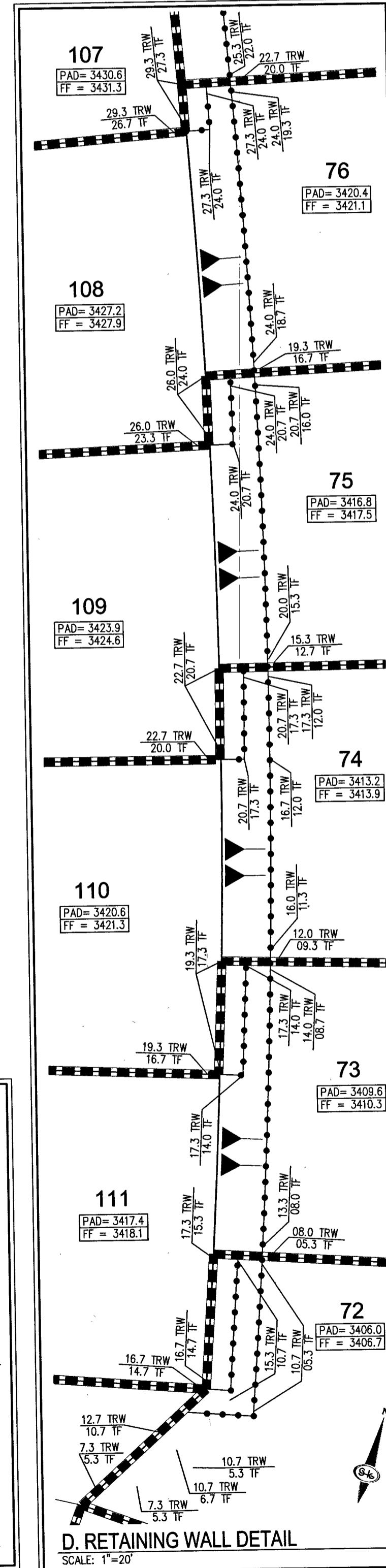
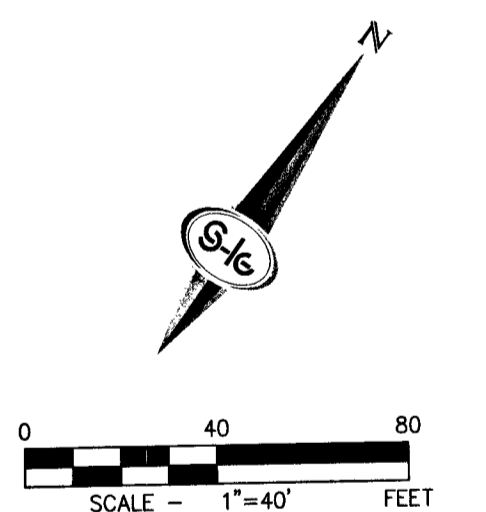


BASIS OF BEARING
 NORTH 05°59'55" WEST, BEING THE BEARING OF THE WEST LINE OF SECTION 34, TOWNSHIP 20 SOUTH, RANGE 59 EAST, M.D.M., CITY OF LAS VEGAS, CLARK COUNTY, NEVADA, AS SHOWN BY MAP THEREOF ON FILE IN BOOK 143, PAGE 47 OF PLATS IN THE CLARK COUNTY RECORDER'S OFFICE, NEVADA.



BENCHMARK
 RIVET & PLATE IN TOP OF CURB IN THE SOUTHEAST CORNER OF DESERT MOON ROAD & DESERT SUNRISE ROAD, FLV034363WA
 NAVD 88 ELEV = 1006.289 METERS = 3301.47 FEET



SLATER HANIFAN GROUP
 CONSULTING ENGINEERS & PLANNERS
 5740 S. ARVILLE STREET #216, LAS VEGAS, NV 89118
 PHONE (702) 284-5300 FAX (702) 284-5399

NO.	DESCRIPTION	DATE	BY	APP.
1	PAD RETAINING WALLS	7/15/13	MAK	
2	REVISE RETAINING WALL ON LOT 91	10/29/16	MAK	

LAS VEGAS, NEVADA

Woodside Homes
 BETTER BY DESIGN
BELMONTE - PHASE 1
WALL PLAN II

DATE: 1/2/14
 DRAFTER: GWB
 DESIGNER: MAK
 CHECKED: CAL

PROJECT NO.
WSH1302-001

W-2
 SHEET 11 OF 40
 H #51783
 10774989-1

I:\web\1302-001\belmonte\ph1\dwg\improv\wsh1302-001rte.dwg 10/26/2016 11:09 AM David Alspinger