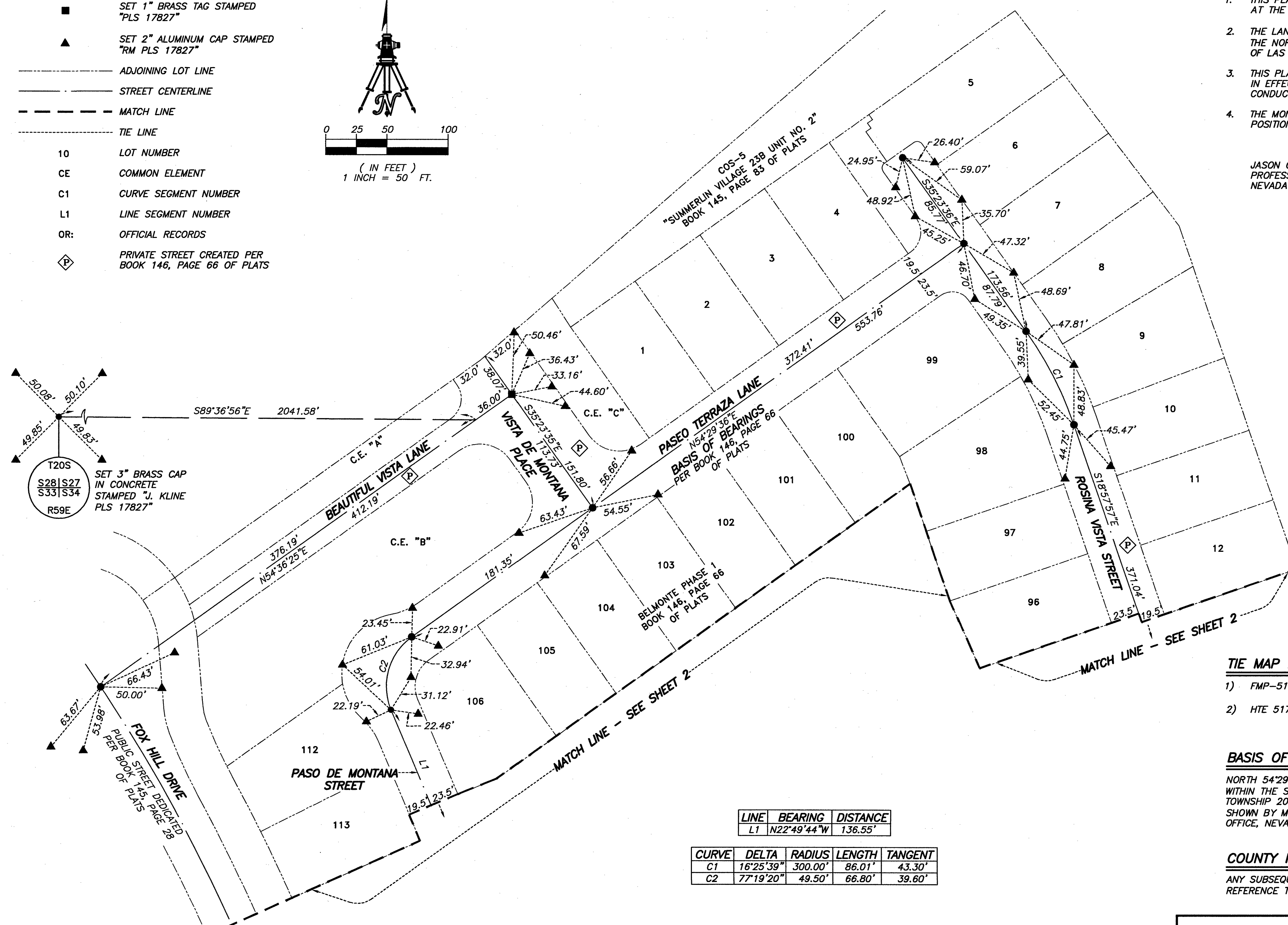
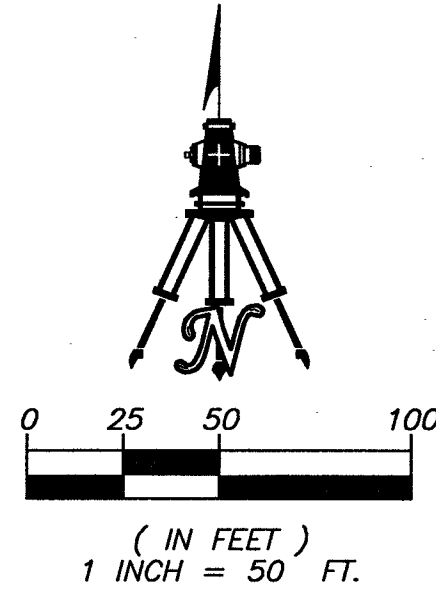


MONUMENT TIE MAP OF BELMONTE PHASE 1

AS SHOWN BY MAP THEREOF IN BOOK 146, PAGE 66 OF PLATS IN THE CLARK COUNTY RECORDER'S OFFICE, NEVADA, LYING WITHIN THE SOUTH HALF (S1/2) OF SECTION 27 AND THE NORTH HALF (N1/2) OF SECTION 34, TOWNSHIP 20 SOUTH, RANGE 59 EAST, M.D.M., CITY OF LAS VEGAS, CLARK COUNTY, NEVADA

LEGEND

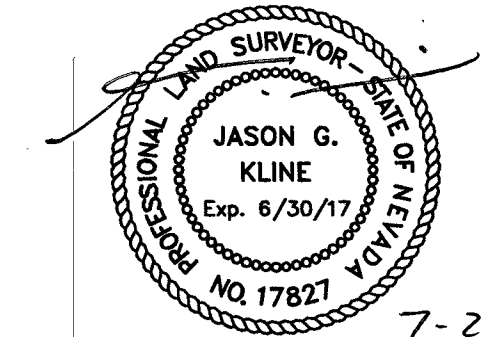
- SET 5/8" REBAR AND 2" ALUMINUM CAP STAMPED "J. KLINE, PLS 17827" (UNLESS OTHERWISE NOTED)
- SET 1" BRASS TAG STAMPED "PLS 17827"
- ▲ SET 2" ALUMINUM CAP STAMPED "RM PLS 17827"
- ADJOINING LOT LINE
- STREET CENTERLINE
- MATCH LINE
- TIE LINE
- 10 LOT NUMBER
- CE COMMON ELEMENT
- C1 CURVE SEGMENT NUMBER
- L1 LINE SEGMENT NUMBER
- OR: OFFICIAL RECORDS
- Ⓟ PRIVATE STREET CREATED PER BOOK 146, PAGE 66 OF PLATS



SURVEYOR'S CERTIFICATE

- I, JASON G. KLINE, A PROFESSIONAL LAND SURVEYOR LICENSED IN THE STATE OF NEVADA, CERTIFY THAT:
- THIS PLAT REPRESENTS THE RESULTS OF A SURVEY CONDUCTED UNDER MY DIRECT SUPERVISION AT THE INSTANCE OF WOODSIDE HOMES OF NEVADA, LLC, NEVADA LIMITED LIABILITY COMPANY.
 - THE LANDS SURVEYED LIE WITHIN A PORTION OF THE SOUTH HALF (S1/2) OF SECTION 27 AND THE NORTH HALF (N1/2) OF SECTION 34, TOWNSHIP 20 SOUTH, RANGE 59 EAST, M.D.M., CITY OF LAS VEGAS, CLARK COUNTY, NEVADA, AND THE SURVEY WAS COMPLETED ON APRIL 15, 2016.
 - THIS PLAT COMPLIES WITH APPLICABLE STATUTES OF THIS STATE AND ANY LOCAL ORDINANCES IN EFFECT ON THE DATE THAT THE SURVEY WAS COMPLETED, AND THE SURVEY WAS CONDUCTED IN ACCORDANCE WITH CHAPTER 625 OF THE NEVADA ADMINISTRATIVE CODE.
 - THE MONUMENTS DEPICTED ON THE PLAT ARE OF THE CHARACTER SHOWN, OCCUPY THE POSITIONS INDICATED AND ARE OF SUFFICIENT NUMBER AND DURABILITY.

JASON G. KLINE
PROFESSIONAL LAND SURVEYOR
NEVADA LICENSE NO. 17827



7-22-16

TIE MAP REFERENCES

- FMP-51874
- HTE 51783

BASIS OF BEARINGS

NORTH 54°29'36" EAST, BEING THE BEARING OF THE CENTERLINE OF PASEO TERRAZA LANE, LYING WITHIN THE SOUTH HALF (S1/2) OF SECTION 27 AND THE NORTH HALF (N1/2) OF SECTION 34, TOWNSHIP 20 SOUTH, RANGE 59 EAST, M.D.M., CITY OF LAS VEGAS, CLARK COUNTY, NEVADA, AS SHOWN BY MAP THEREOF IN BOOK 146, PAGE 66 OF PLATS IN THE CLARK COUNTY RECORDER'S OFFICE, NEVADA.

COUNTY RECORDER'S NOTE

ANY SUBSEQUENT CHANGES TO THIS MAP SHOULD BE EXAMINED AND MAY BE DETERMINED BY REFERENCE TO THE COUNTY RECORDER'S CUMULATIVE MAP INDEX. N.R.S. 278.5695.

LINE	BEARING	DISTANCE
L1	N22°49'44"W	136.55'

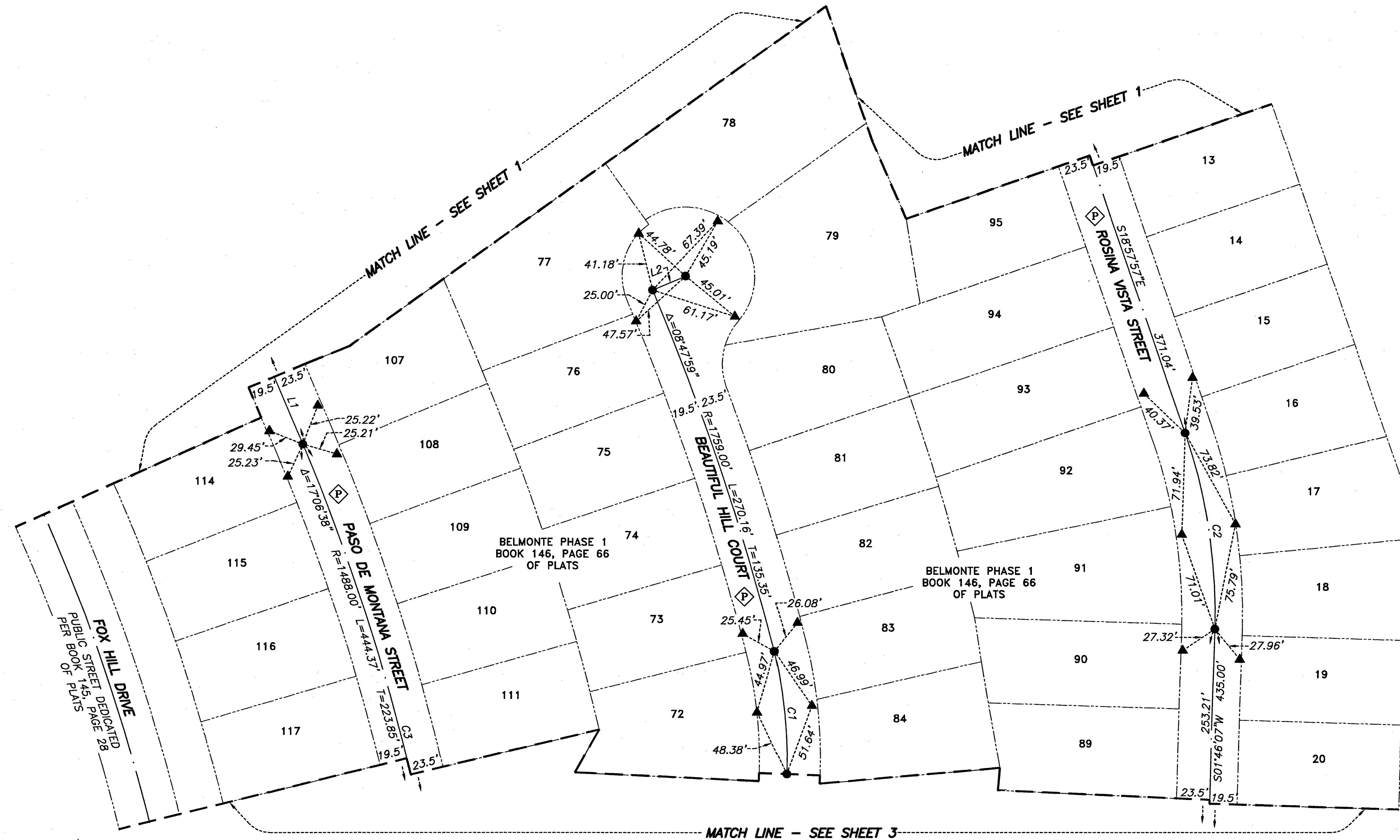
CURVE	DELTA	RADIUS	LENGTH	TANGENT
C1	16°25'39"	300.00'	86.01'	43.30'
C2	77°19'20"	49.50'	66.80'	39.60'

MONUMENT TIE MAP OF BELMONTE PHASE 1		INSTRUMENT NO. _____
AS SHOWN BY MAP THEREOF IN BOOK 146, PAGE 66 OF PLATS IN THE CLARK COUNTY RECORDER'S OFFICE, NEVADA, LYING WITHIN THE SOUTH HALF (S1/2) OF SECTION 27 AND THE NORTH HALF (N1/2) OF SECTION 34, TOWNSHIP 20 SOUTH, RANGE 59 EAST, M.D.M., CITY OF LAS VEGAS, CLARK COUNTY, NEVADA		OFFICIAL RECORDS
WALLACE MORRIS KLINE SURVEYING, L.L.C. LAND SURVEY CONSULTING 5740 SOUTH ARVILLE STREET, #206 LAS VEGAS, NEVADA 89118 PH:702.212.3967 FX:702.212.3963		BOOK NO. _____
FILE _____ AT _____ DATE _____		FILED AT THE REQUEST OF WALLACE MORRIS KLINE SURVEYING
SHEET 1 OF 3		DATE _____ AT _____
FILE _____ , PAGE _____		FILE _____ PAGE _____
CLARK COUNTY, NEVADA RECORDS DEBBIE CONWAY, RECORDER		OF SURVEYS
FEE \$ _____ DEPUTY _____		CLARK COUNTY, NEVADA RECORDS DEBBIE CONWAY, RECORDER

P:\SHG\13153\DWG\MAP\WTA\PHASE 1\13153-PH1-MTL-SHT1.dwg 07-22-16 11:48:40 jkline

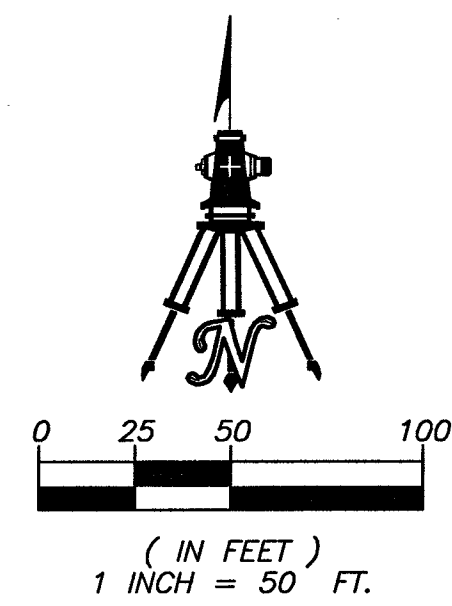
MONUMENT TIE MAP OF BELMONTE PHASE 1

AS SHOWN BY MAP THEREOF IN BOOK 146, PAGE 66 OF PLATS IN THE CLARK COUNTY RECORDER'S OFFICE, NEVADA, LYING WITHIN THE SOUTH HALF (S1/2) OF SECTION 27 AND THE NORTH HALF (N1/2) OF SECTION 34, TOWNSHIP 20 SOUTH, RANGE 59 EAST, M.D.M., CITY OF LAS VEGAS, CLARK COUNTY, NEVADA



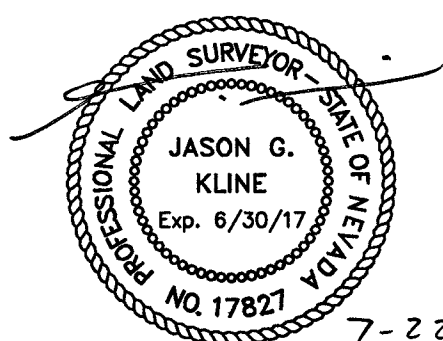
LINE	BEARING	DISTANCE
L1	N22°49'44"W	136.55'
L2	N67°01'19"E	25.50'

CURVE	DELTA	RADIUS	LENGTH	TANGENT
C1	16°45'53"	300.00'	87.78'	44.21'
C2	20°44'04"	390.50'	141.32'	71.44'
C3	14°49'19"	1488.00'	384.93'	193.55'



LEGEND

- SET 5/8" REBAR AND 2" ALUMINUM CAP STAMPED "J. KLINE, PLS 17827"
- ▲ SET 2" ALUMINUM CAP STAMPED "RM PLS 17827"
- × CALCULATED POSITION MONUMENTATION LOCATION FALLS ON MANHOLE LID SET SAWCUT STRADDLES IN MANHOLE COLLAR
- ADJOINING LOT LINE
- STREET CENTERLINE
- MATCH LINE
- TIE LINE
- 10 LOT NUMBER
- CE COMMON ELEMENT
- C1 CURVE SEGMENT NUMBER
- L1 LINE SEGMENT NUMBER
- Ⓟ PRIVATE STREET CREATED PER BOOK 146, PAGE 66 OF PLATS



MONUMENT TIE MAP OF BELMONTE PHASE 1

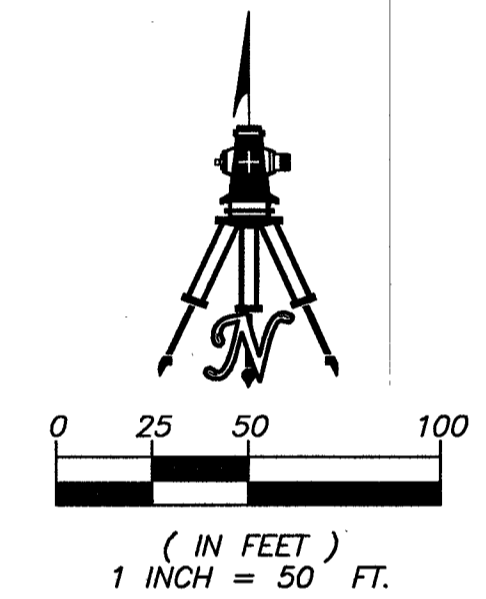
AS SHOWN BY MAP THEREOF IN BOOK 146, PAGE 66 OF PLATS IN THE CLARK COUNTY RECORDER'S OFFICE, NEVADA, LYING WITHIN THE SOUTH HALF (S1/2) OF SECTION 27 AND THE NORTH HALF (N1/2) OF SECTION 34, TOWNSHIP 20 SOUTH, RANGE 59 EAST, M.D.M., CITY OF LAS VEGAS, CLARK COUNTY, NEVADA

MATCH LINE - SEE SHEET 2



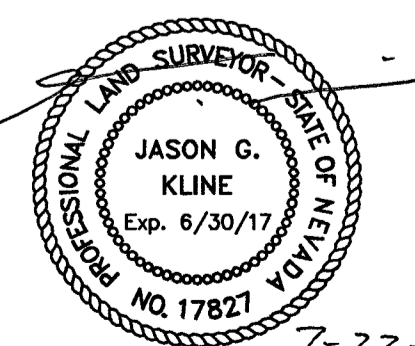
CURVE	DELTA	RADIUS	LENGTH	TANGENT
C1	02°17'19"	1488.00'	59.44'	29.72'
C2	14°49'19"	1488.00'	384.93'	193.55'
C3	14°25'19"	300.00'	75.51'	37.96'
C4	02°40'42"	2003.27'	93.64'	46.83'
C5	02°38'47"	2003.27'	92.53'	46.27'
C6	01°36'09"	1250.00'	34.96'	17.48'
C7	00°41'29"	3000.64'	36.21'	18.10'
C8	17°06'38"	1488.00'	444.37'	223.85'

LINE	BEARING
R1	N08°09'25"W
R2	N07°24'54"E
R3	S01°47'19"E
R4	S74°08'41"E



LEGEND

- SET 5/8" REBAR AND 2" ALUMINUM CAP STAMPED "J. KLINE PLS 17827"
- ▲ SET 2" ALUMINUM CAP STAMPED "RM PLS 17827"
- ADJOINING LOT LINE
- STREET CENTERLINE
- - - MATCH LINE
- TIE LINE
- 1 LOT NUMBER
- CE COMMON ELEMENT
- C1 CURVE SEGMENT NUMBER
- R1 RADIAL BEARING NUMBER
- ⬡ PRIVATE STREET CREATED PER BOOK 146, PAGE 66 OF PLATS



7-22-16