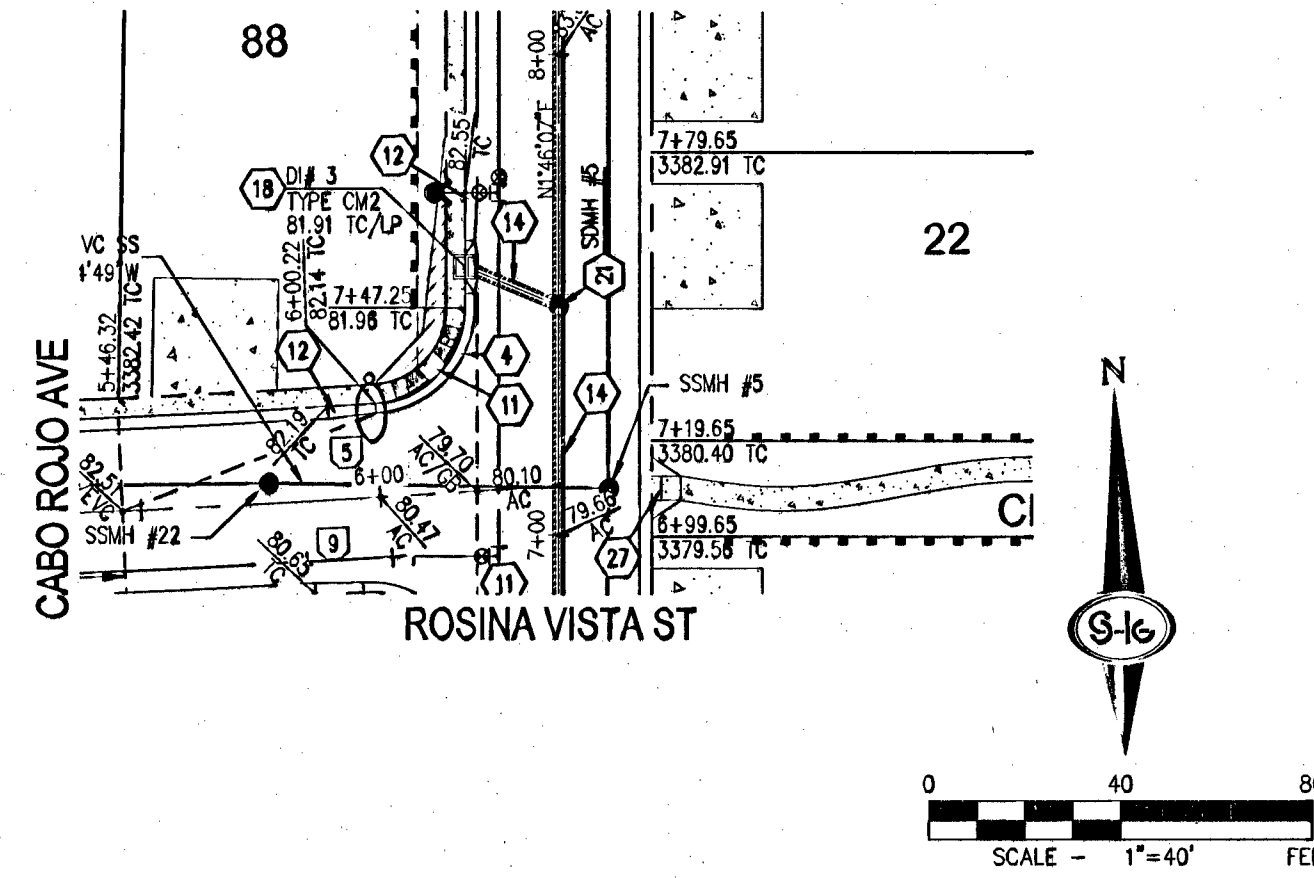
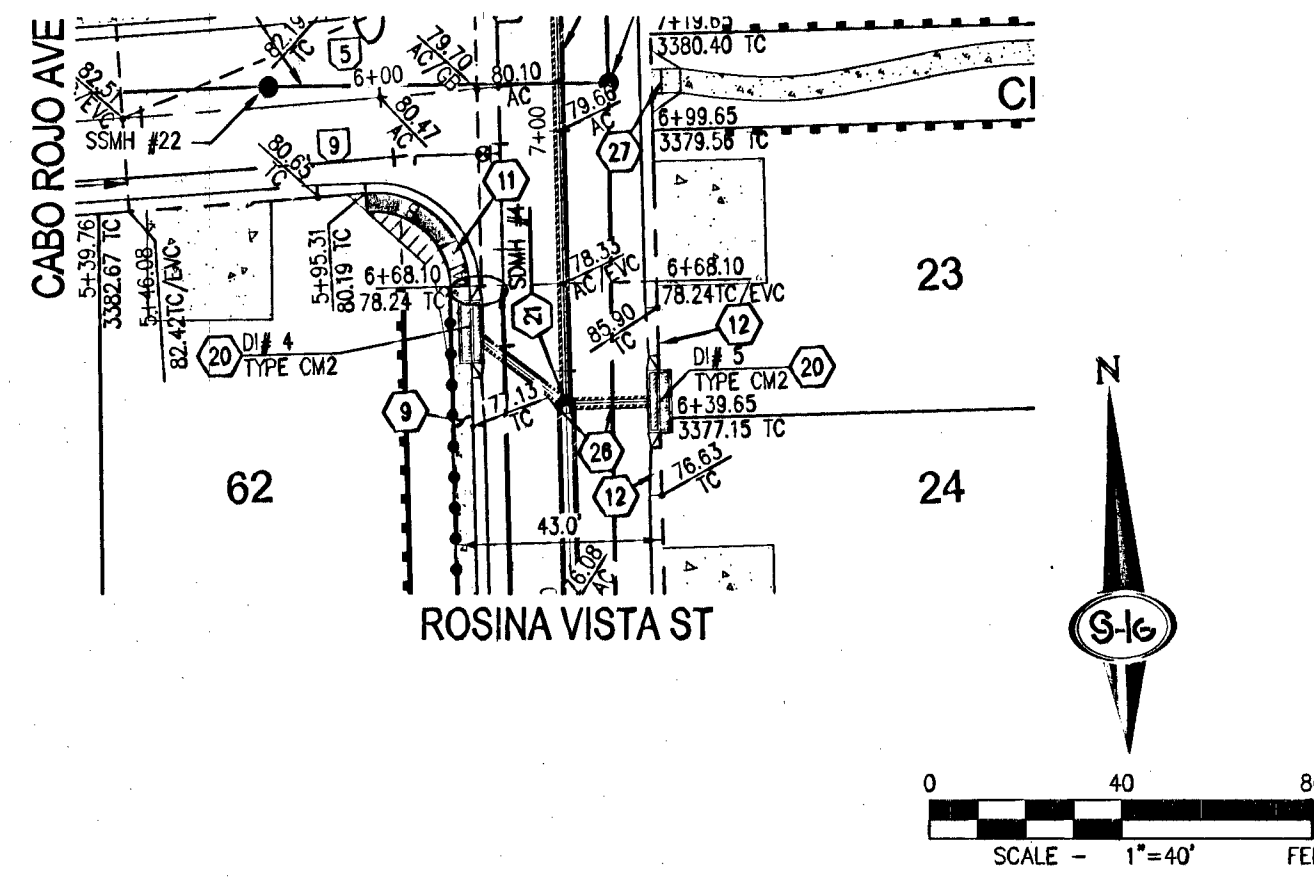


STORM DRAIN LATERAL #1
(DRAINAGE EASEMENT)



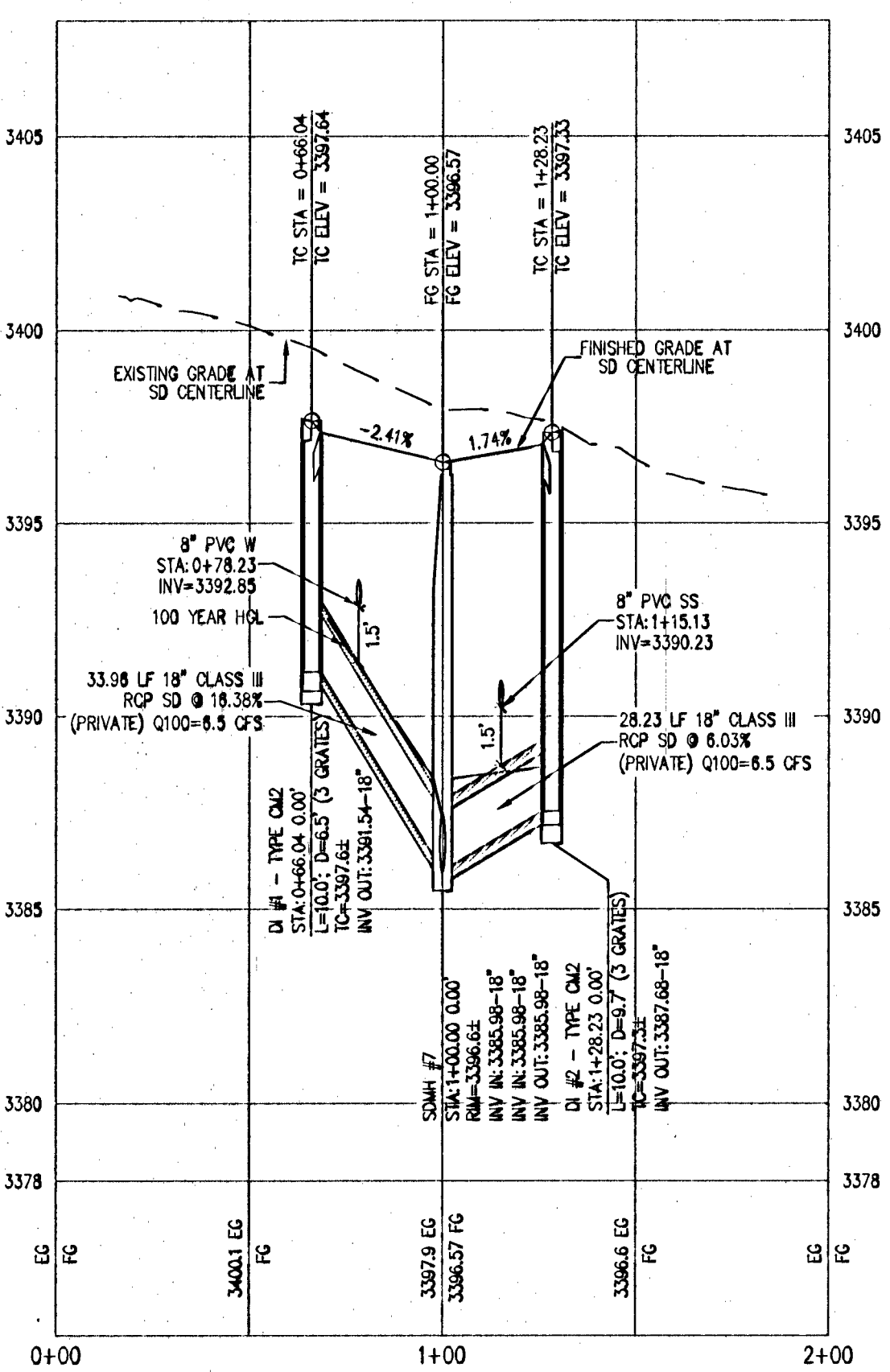
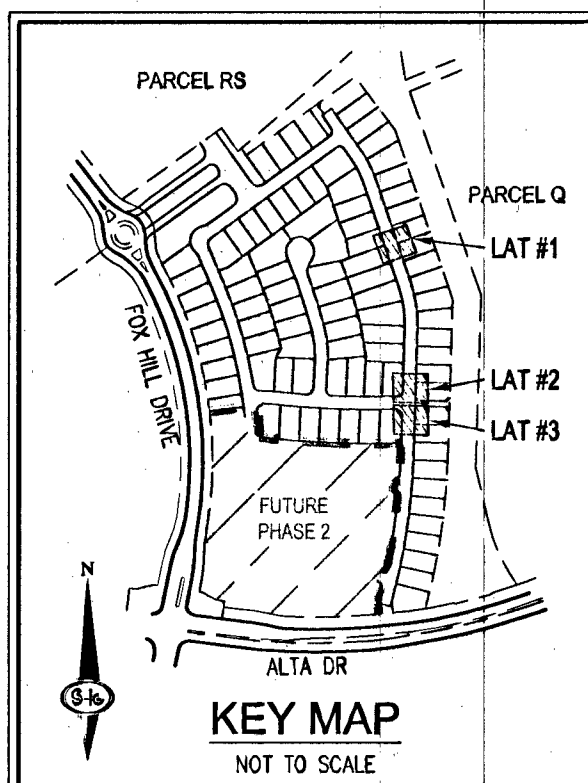
STORM DRAIN LATERAL #2
(DRAINAGE EASEMENT)



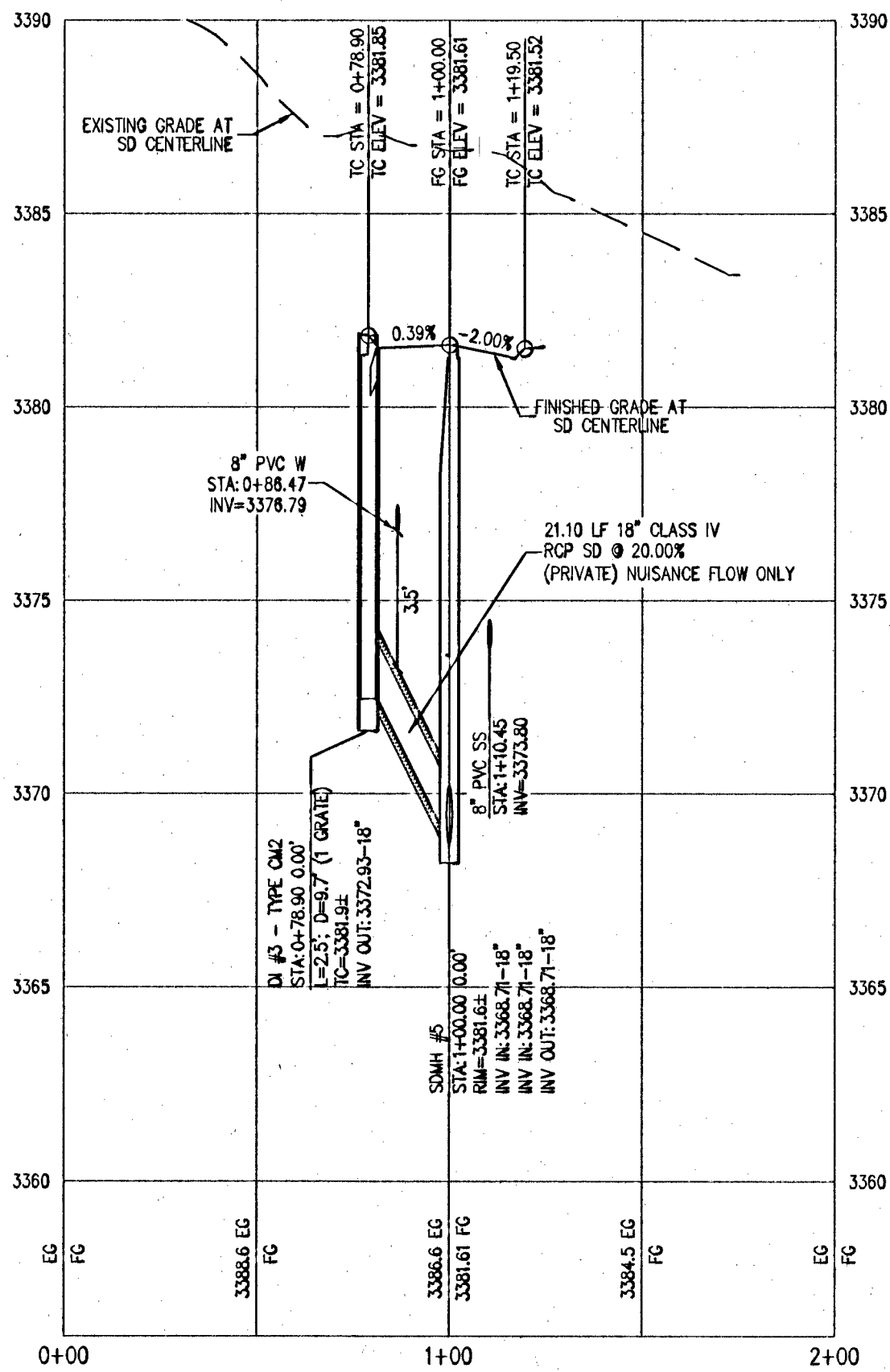
STORM DRAIN LATERAL #3
(DRAINAGE EASEMENT)

RAMP TRANSITION LENGTHS FOR 1:12 SIDE SLOPES			
CASE NO.	GRADE % "B" TO "A"	"A" MIN.	"B" MIN.
1	-6 TO -5.01	4.5'	21.5'
2	-5 TO -4.01	4.5'	15.0'
3	-4 TO -3.01	4.5'	12.0'
4	-3 TO -2.01	4.5'	9.5'
5	-2 TO 2	8.0'	8.0'
6	2.01 TO 3	9.5'	4.5'
7	3.01 TO 4	12.0'	4.5'
8	4.01 TO 5	15.0'	4.5'
9	5.01 TO 6	21.5'	4.5'

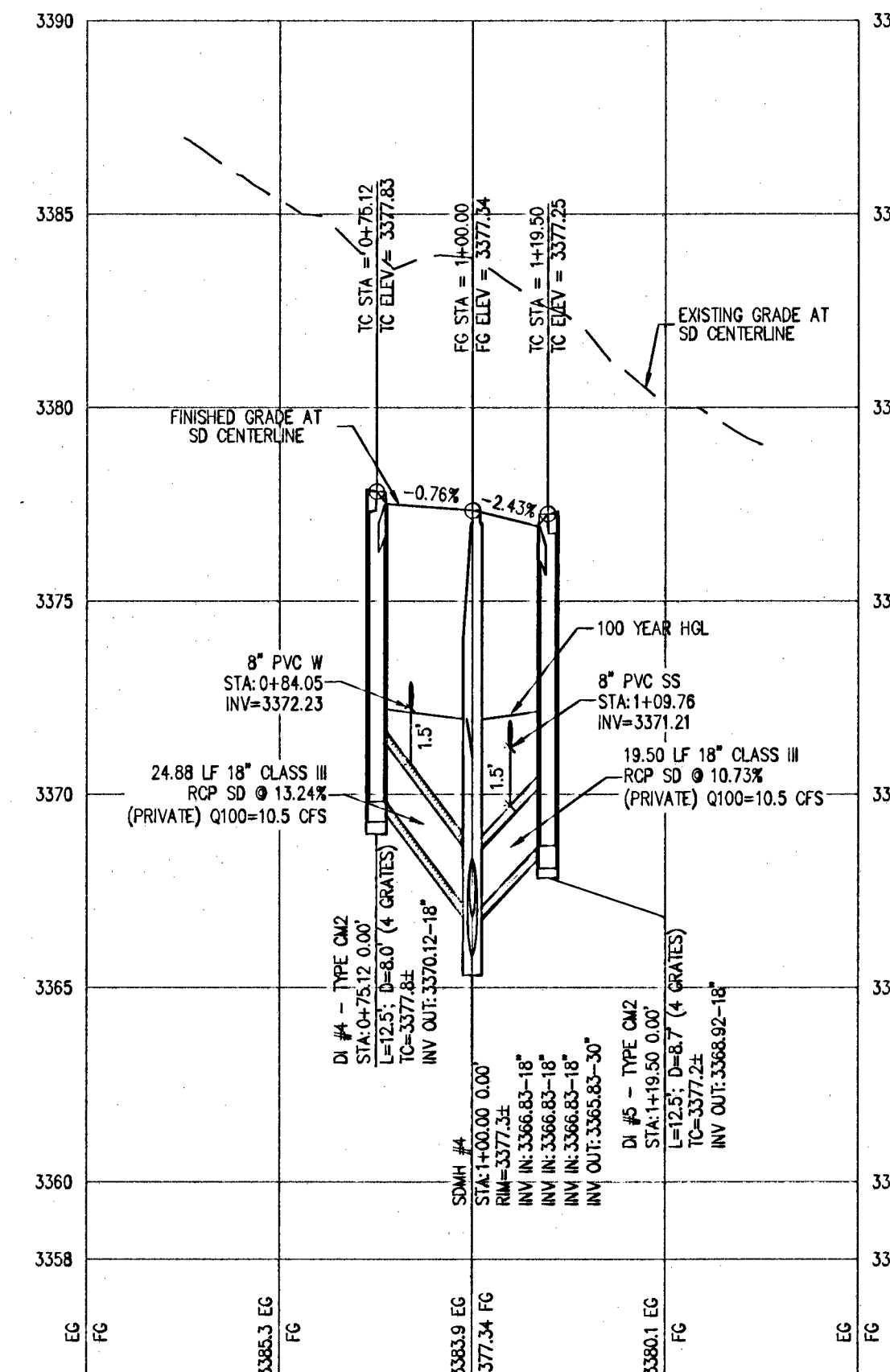
SIDEWALK RAMPS USING ARMOR TILE TRUNCATED DOWNS OR EQUIVALENT PER CCAUSD NO. 235, CASE I



PROFILE
HOR. : 1"=40'
VERT. : 1"=4'



PROFILE
HOR. : 1"=40'
VERT. : 1"=4'



PROFILE
HOR. : 1"=40'
VERT. : 1"=4'

- GENERAL NOTES**
- CONSTRUCT 2" AC PAVEMENT OVER 4" TYPE II AGGREGATE BASE
 - NOT USED
 - CONSTRUCT 30" ROLL TYPE CURB AND GUTTER PER SUMMERLIN IMPROVEMENT STANDARDS S-48
 - CONSTRUCT 1" TYPE CURB AND GUTTER PER SUMMERLIN IMPROVEMENT STANDARDS S-47
 - CONSTRUCT "A" TYPE ISLAND CURB PER SUMMERLIN IMPROVEMENT STANDARDS S-50
 - CONSTRUCT 1.5" TYPE ISLAND CURB PER SUMMERLIN IMPROVEMENT STANDARDS S-52
 - CONSTRUCT 8" CROSS GUTTER PER SUMMERLIN IMPROVEMENT STANDARDS S-64
 - CONSTRUCT 5" WIDE SIDEWALK PER SUMMERLIN IMPROVEMENT STANDARDS S-72
 - CONSTRUCT 4" WIDE SIDEWALK PER SUMMERLIN IMPROVEMENT STANDARDS S-72
 - CONSTRUCT SIDEWALK RAMPS USING ARMOR TILE TRUNCATED DOWNS OR EQUIVALENT PER CCAUSD NO. 235, CASE I
 - CONSTRUCT SIDEWALK RAMPS USING ARMOR TILE TRUNCATED DOWNS OR EQUIVALENT PER CCAUSD NO. 235, CASE I
 - CONSTRUCT 10' TRANSITION FROM 24" L CURB TO 30" ROLL CURB PER DETAIL 35 ON SHEET D-2
 - BE INTO EXISTING CURB AND GUTTER. CONTRACTOR TO VERIFY IC PRIOR TO START OF CONSTRUCTION
 - INSTALL 18" ROP CLASS IV STORM DRAIN (PRIVATE)
 - INSTALL 24" ROP CLASS IV STORM DRAIN (PRIVATE)
 - INSTALL 30" ROP CLASS IV STORM DRAIN (PRIVATE)
 - INSTALL 36" ROP CLASS IV STORM DRAIN (PRIVATE)
 - INSTALL 2.5" TYPE CM2 DROP INLET PER CCAUSD NO. 412.1 AND 421
 - INSTALL 10.0" TYPE CM2 DROP INLET PER CCAUSD NO. 412.1 AND 421
 - INSTALL 12.5" TYPE CM2 DROP INLET PER CCAUSD NO. 412.1 AND 421
 - INSTALL 48" TYPE III STORM DRAIN MANHOLE PER CCAUSD NO. 406
 - INSTALL 60" TYPE III STORM DRAIN MANHOLE PER CCAUSD NO. 406
 - INSTALL 4" CEMENT SLURRY (CLSM II) ENCASEMENT
 - CONNECT TO EX 36" ROP STORM DRAIN
 - CONTRACTOR TO VERIFY LOCATION AND INVERT PRIOR TO START OF CONSTRUCTION
 - INSTALL RIP RAP D50=6" THICKNESS=12"
 - INSTALL 18" ROP CLASS III STORM DRAIN (PRIVATE)
 - CONSTRUCT SIDEWALK RAMP PER SUMMERLIN IMPROVEMENT STANDARDS S-75 (OPTION 1)
- SEE SHEET C-2 FOR ABBREVIATIONS AND QUANTITIES

- GENERAL NOTES**
- SEE SHEETS 10-12 FOR WALL PLAN.
 - SEE PLAN AND PROFILE SHEETS FOR CENTERLINE AND BACK SLOPE CURB DATA.
 - FINAL GRADES ADJACENT TO STRUCTURES SHALL BE IN CONFORMANCE WITH IBC 2006, SECTION 2304.11.2.2.
 - THE CONTRACTOR SHALL VERIFY ALL CONDITIONS AND DIMENSIONS AND REPORT ALL DISCREPANCIES TO THE ENGINEER.
 - ALL IMPROVEMENTS TO BE PROTECTED FROM EROSION BY SWPPP.
 - MAXIMUM/MINIMUM SLOPES AND MINIMUM STREET SECTIONS NOT TO EXCEED THAT SHOWN ON GEOTECH REPORT.
 - SEE DETAIL SHEETS FOR STREET SECTIONS AND DETAILS.
 - ALL PUBLIC AND PRIVATE DRAINAGE IMPROVEMENTS TO BE BONDED FOR AND INSPECTED.
 - CONSTRUCTION OF BLOCK WALLS REQUIRES A SEPARATE BUILDING PERMIT AND APPROVAL.
 - EXISTING UTILITY LOCATIONS SHOWN HEREON ARE APPROXIMATE ONLY. CONTRACTOR TO VERIFY LOCATION AND ELEVATION OF EXISTING UTILITY STRUCTURES AND FACILITIES AND NOTIFY ENGINEER OF ANY DISCREPANCIES PRIOR TO CONSTRUCTION. CONTRACTOR TO PROTECT IN PLACE DURING CONSTRUCTION.
 - ENGINEER/OWNER SHALL BE NOTIFIED OF PRIOR DAMAGE TO EXISTING FACILITIES PRIOR TO CONSTRUCTION. CONTRACTOR WILL BE RESPONSIBLE FOR REPAIR/REPLACING FACILITIES IF ENGINEER/OWNER IS NOT NOTIFIED OF EXISTING DAMAGE PRIOR TO CONSTRUCTION COMMENCING.
 - NO STRUCTURE, VEGETATION, OR OBJECTS OF ANY KIND IS PERMITTED OVER TWENTY-FOUR (24) INCHES IN HEIGHT (MEASURED FROM THE TOP OF THE ADJACENT CURB IF CURB EXISTS) WITHIN THE SIGHT VISIBILITY ZONES.
 - ALL ELEVATIONS SHOWN, WITH EXCEPTION TO PAD AND FINISHED FLOOR ELEVATIONS, ARE THE VALUE SHOWN PLUS 3.00'.
 - ALL PRIVATE STREETS ARE PUBLIC UTILITY, ONLY SEWER AND PUBLIC DRAINAGE EASEMENTS TO BE PRIVATELY MAINTAINED BY HOA.

DISCLAIMER NOTE

EXISTING UTILITY LOCATIONS SHOWN HEREON ARE APPROXIMATE ONLY. IT SHALL BE THE CONTRACTOR'S RESPONSIBILITY TO DETERMINE THE EXCEPT VERTICAL LOCATION OF ALL EXISTING UNDERGROUND UTILITIES PRIOR TO COMMENCING CONSTRUCTION. NO REPRESENTATION IS MADE THAT ALL EXISTING UTILITIES ARE SHOWN HEREON. THE ENGINEER ASSUMES NO RESPONSIBILITY FOR UTILITIES NOT SHOWN IN THEIR PROPER LOCATION.

- DROP INLET NOTES**
- CAST-IN-PLACE MONOLITHIC POUR WITH WATER STOP BETWEEN SLAB AND WALLS.
 - BASE WALLS AND TOP TO BE CONSTRUCTED WITH MECHANICAL WATER STOPS, CENTER BULB, OR FLAT STRIP (VINYLEK, GREENSTREAK PLASTIC PRODUCTS, OR APPROVED EQUAL)

APPROVED FOR CONSTRUCTION

Dr. [Signature]
LAS VEGAS VALLEY WATER DISTRICT ENGINEERING SERVICES MANAGER
PROJECT NO. 122352 DATE 01/24/14

SLATER HANIFAN GROUP
CONSULTING ENGINEERS & PLANNERS
5740 S. ARVILLE STREET #216, LAS VEGAS, NV 89118
PHONE (702) 284-5300 FAX (702) 284-5300

Woodside Homes
BETTER BY DESIGN

BELMONTE - PHASE 1
PLAN AND PROFILE STORM DRAIN I

DATE: 1/2/14
DRAFTER: GWB
DESIGNER: MAK
CHECKED: CAL
PROJECT NO. WSH1302-001

PP-11
SHEET 23 OF 40
H 851783
1074989-1

Call before you Dig
Avoid hitting underground utility lines. It's costly.

Call 811
1-800-227-2600
OR
CLARK COUNTY TRAFFIC OPERATIONS
1-702-455-6000

AVOID HITTING UNDERGROUND TRAFFIC SIGNAL SYSTEMS AND STREET LIGHT SYSTEM CONDUITS. IT'S COSTLY.

Call before you do UnderGround
1-702-455-6000
OR
CLARK COUNTY TRAFFIC OPERATIONS
1-702-455-6000
FREWAY AND ARTERIAL SYSTEM OF TRANSPORTATION

AVOID HITTING OVERHEAD POWER LINES. IT'S COSTLY.

CALL BEFORE YOU DO OVERHEAD
1-702-227-2929

