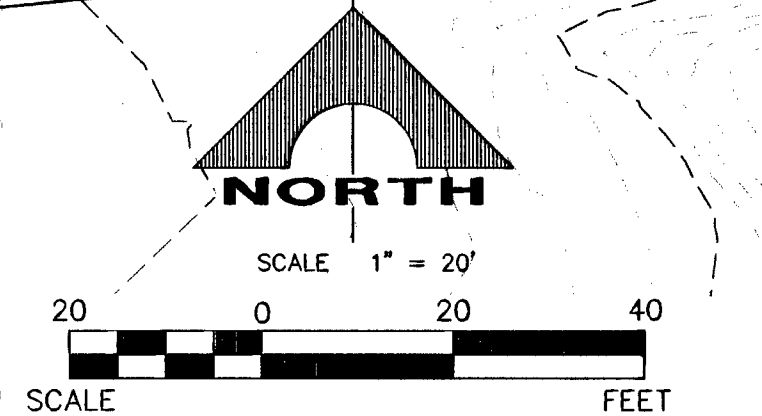


BENCHMARK			
BM #	DESCRIPTION	NAVD 88 DATUM	NAVD 88 DATUM
34NE8	RIVET AND PLATE IN TOP OF CURB @ NORTHEAST CORNER OF DESERT FOOTHILLS AND ALTA DRIVE	3304.45 (FEET)	1007.197 (METERS)

NOTE
THIS SET OF DRAWINGS IS BASED UPON NAVD 88 DATUM. PREVIOUS DRAWINGS MAY BE BASED ON OTHER DATUM. CARE SHOULD BE OBSERVED WHEN UTILIZING THIS SET OF DRAWINGS.



BASIS OF BEARINGS
NORTH 89°45'05" EAST BEING THE SOUTH LINE OF THE SOUTHWEST QUARTER (SW 1/4) OF SECTION 35, TOWNSHIP 20 SOUTH, RANGE 59 EAST, M.D.M., AS SHOWN BY MAP ON FILE IN FILE 91, PAGE 28 OF PARCEL MAPS IN THE CLARK COUNTY RECORDER'S OFFICE, CLARK COUNTY, NEVADA

SID #810 PROJECTS 7A, 7B & 7C
SID #809 PROJECTS 11A, 11B & 11C
ALTA DRIVE (PUBLIC)
SCALE: HORIZ. 1" = 20', VERT. 1" = 5'
REFER TO SHEET 2 FOR CONSTRUCTION NOTES

Call before you Dig
Avoid cutting underground utility lines. It's costly.

1-800-227-2800

CALL BEFORE YOU DO OVERHEAD

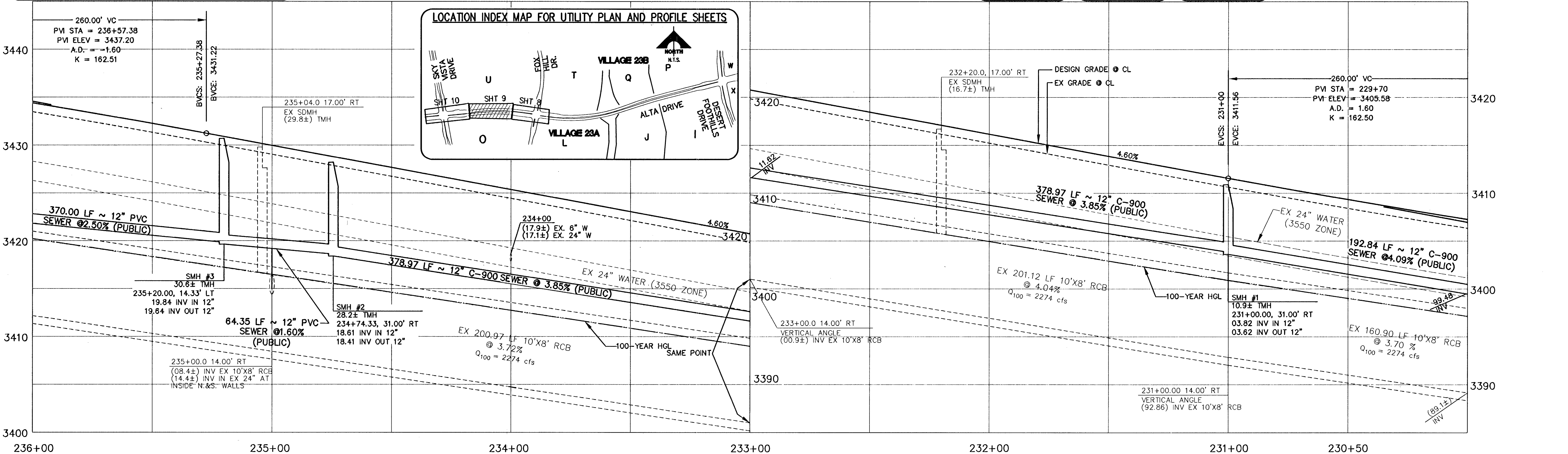
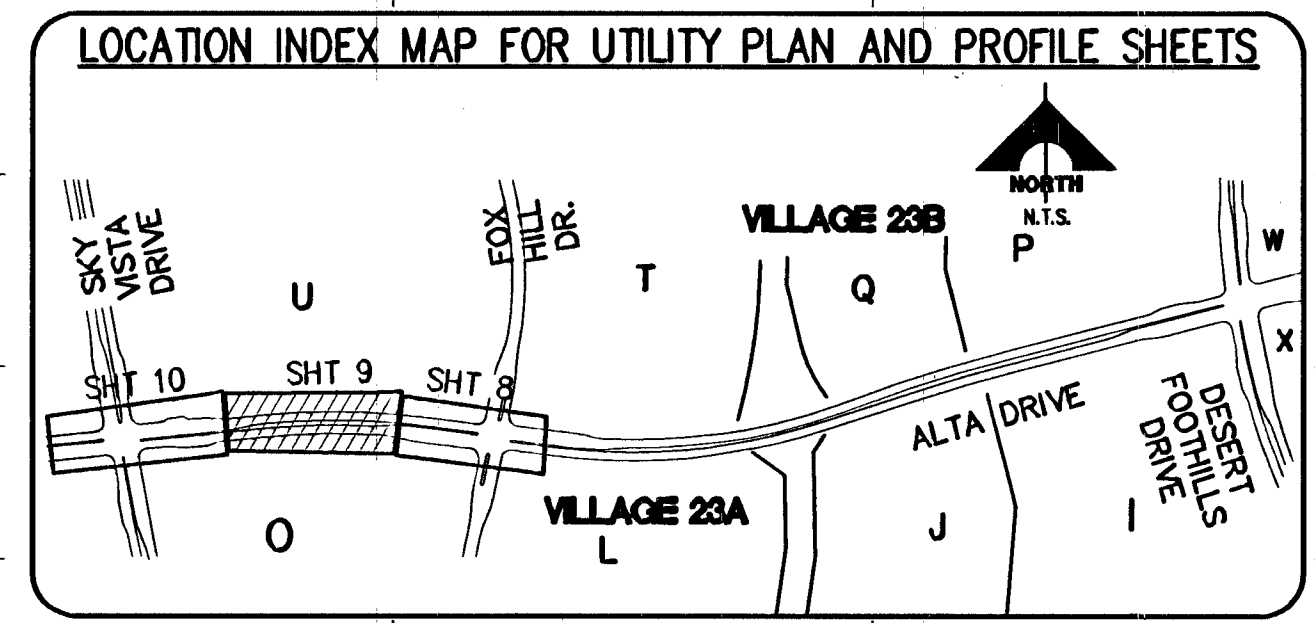
1-702-227-2929

FAST
Call before you UnderGround.

1-702-432-5300

FIREWAY AND ARTERIAL SYSTEM OF TRANSPORTATION

APPROVED FOR CONSTRUCTION 1ST APP'D 10/15/13
DISHARI B. D.S.M.
LAS VEGAS VALLEY WATER DISTRICT ENGINEERING SERVICES MANAGER
PROJECT NO. 122081 DATE: 7/28/14



DESIGN: [] DRAWING: [] CHECK: [] ISSUE DATE: [] PLOT DATE: 07-22-14 PLOT TIME: 15:17:41
 DATE: 7/12/14
 G.C. WALLACE COMPANIES ENGINEERS | PLANNERS | SURVEYORS
 1555 S. RAINBOW BOULEVARD, LAS VEGAS, NV 89106
 T: 702.264.2000 F: 702.264.2299 GCWALLACE.COM
 E: Projects@6001.DWG Production 9/06-C09.dwg
 THE HOWARD HUGHES COMPANY, LLC
 VILLAGE 23A/23B ALTA DRIVE PHASE 2
 ALTA DRIVE UTILITY PLAN AND PROFILE
 STA. 230+00 TO STA. 236+00
 DRAWING 9
 H #51095
 CLV #107V59-22-2
 JOB NO. 62023B-208