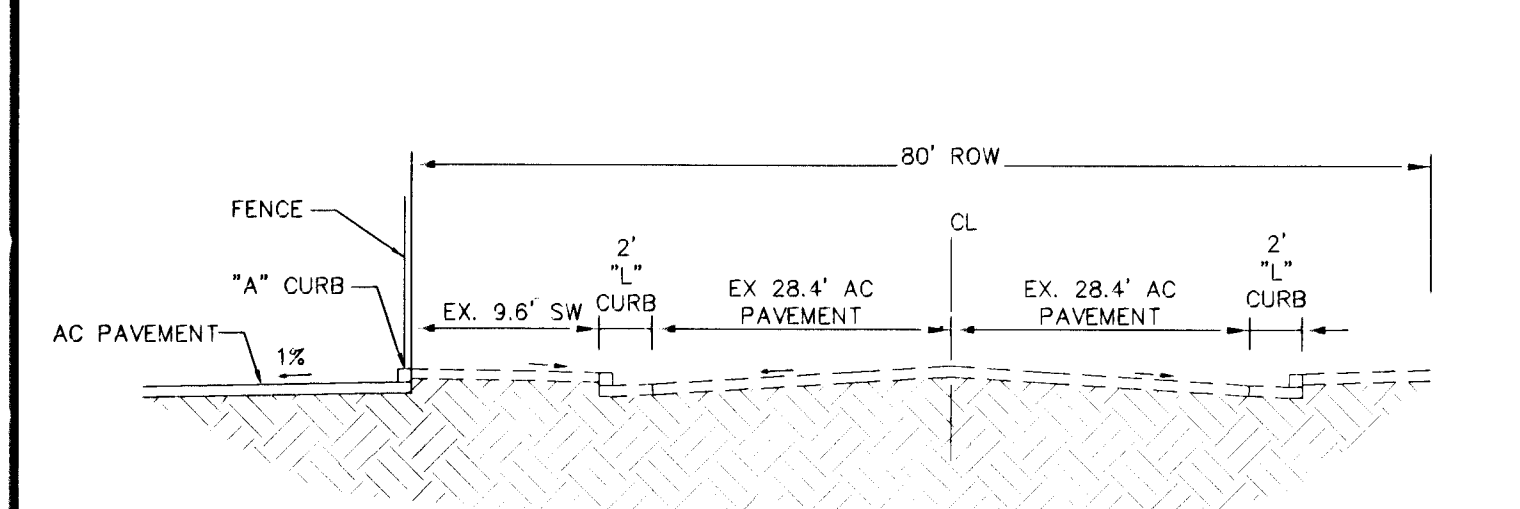
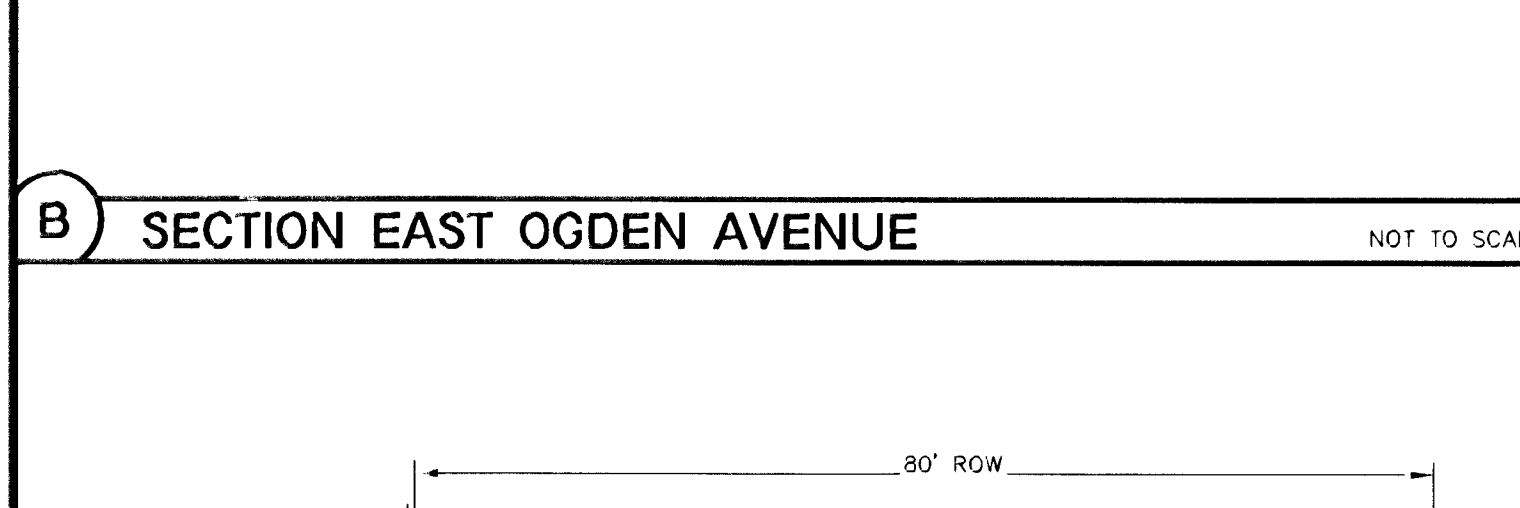


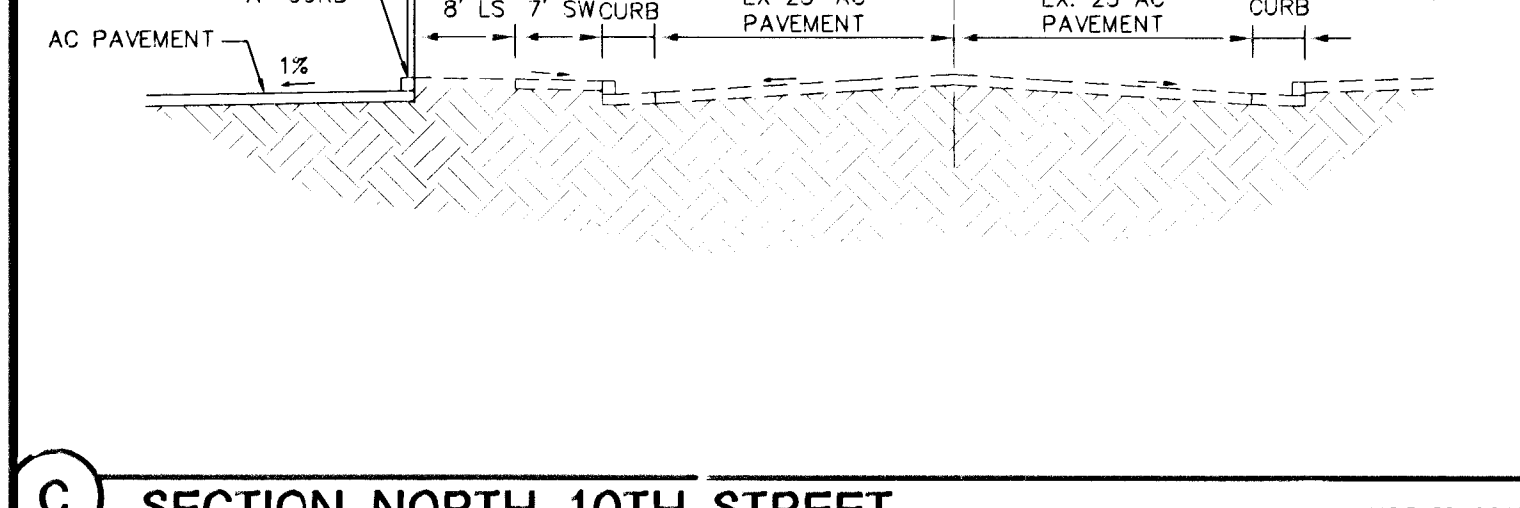
**A SECTION NORTH 9TH STREET** NOT TO SCALE



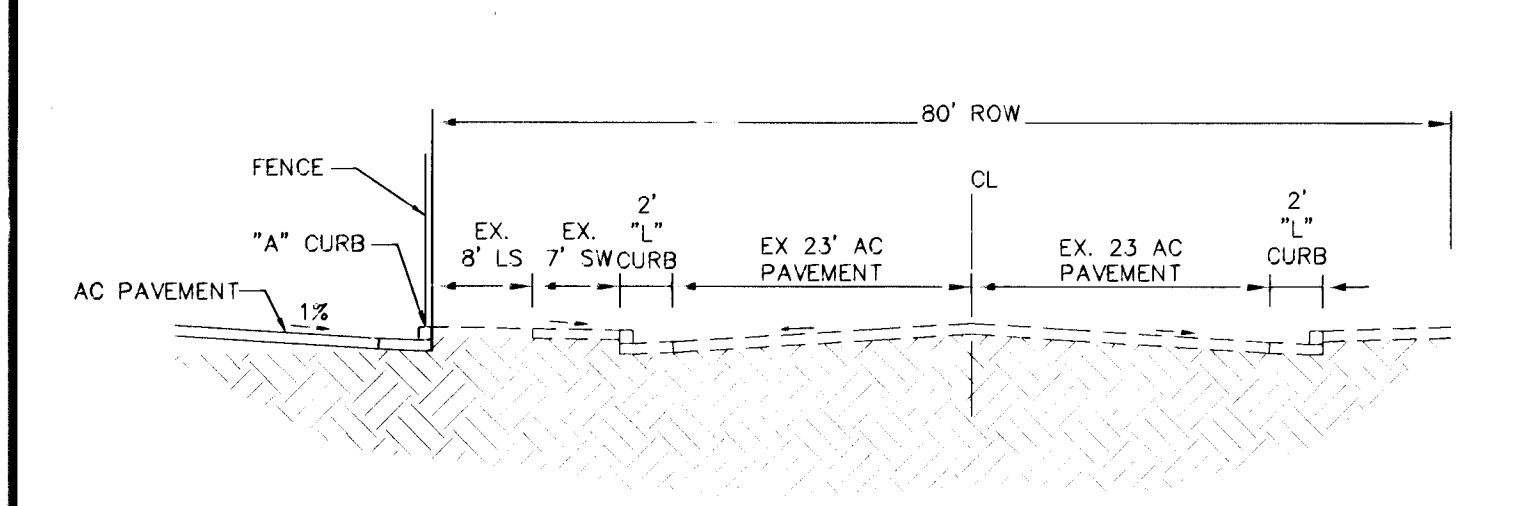
**B SECTION EAST OGDEN AVENUE** NOT TO SCALE



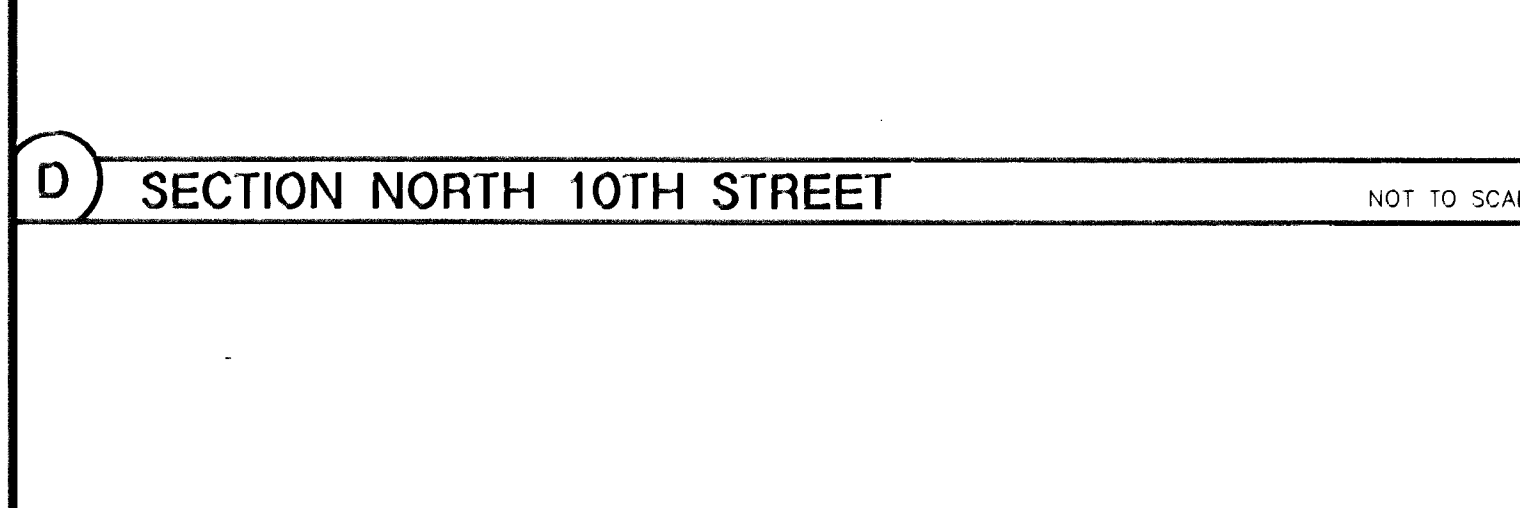
**C SECTION NORTH 10TH STREET** NOT TO SCALE



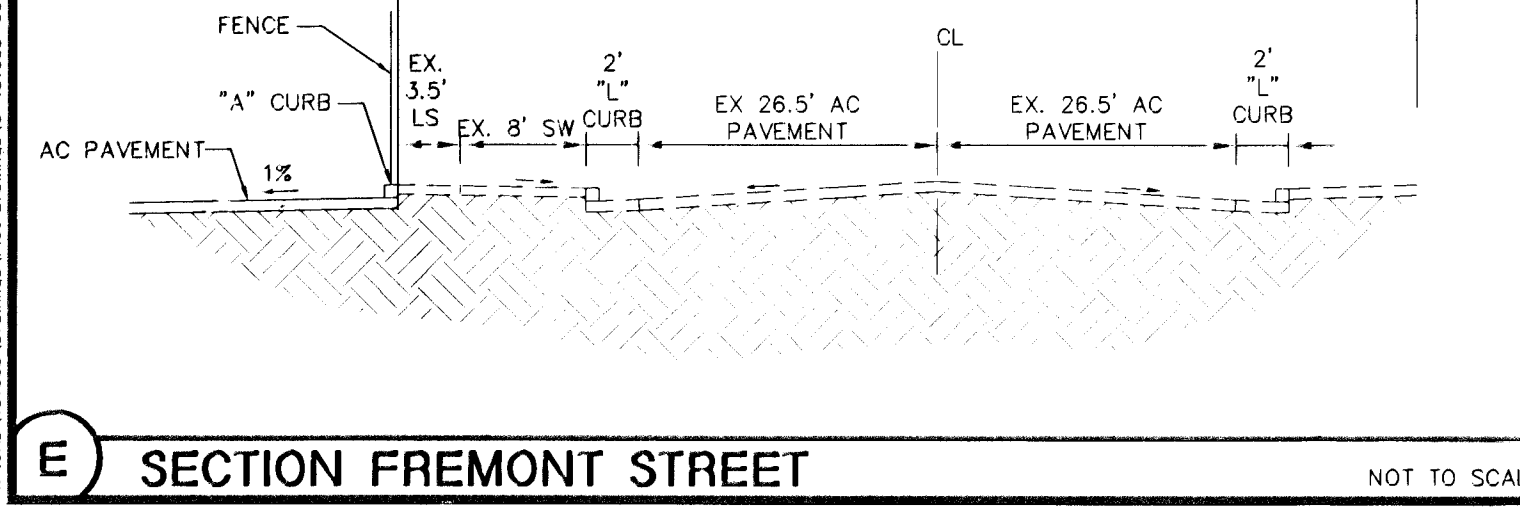
**D SECTION NORTH 10TH STREET** NOT TO SCALE



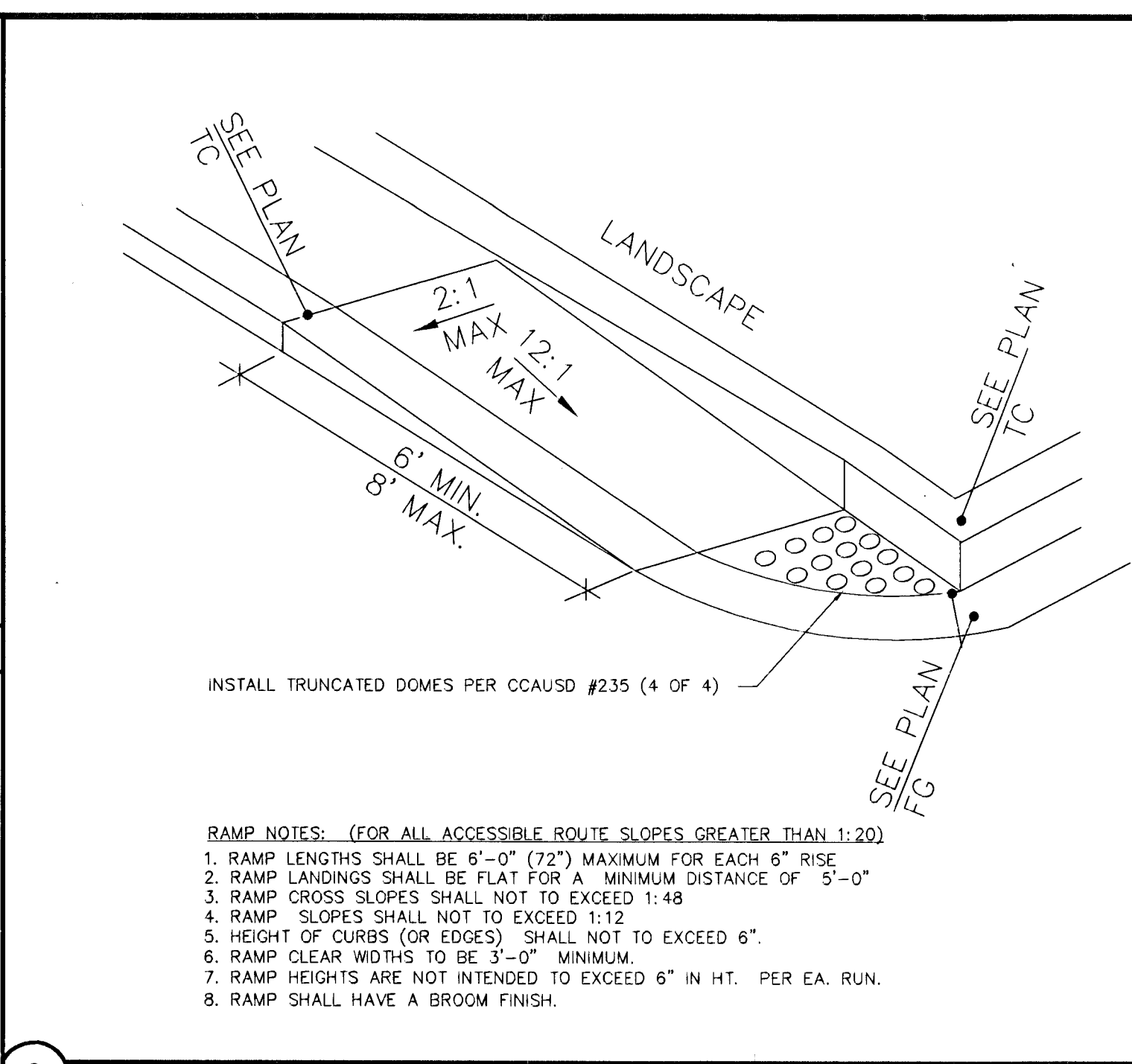
**E SECTION FREMONT STREET** NOT TO SCALE



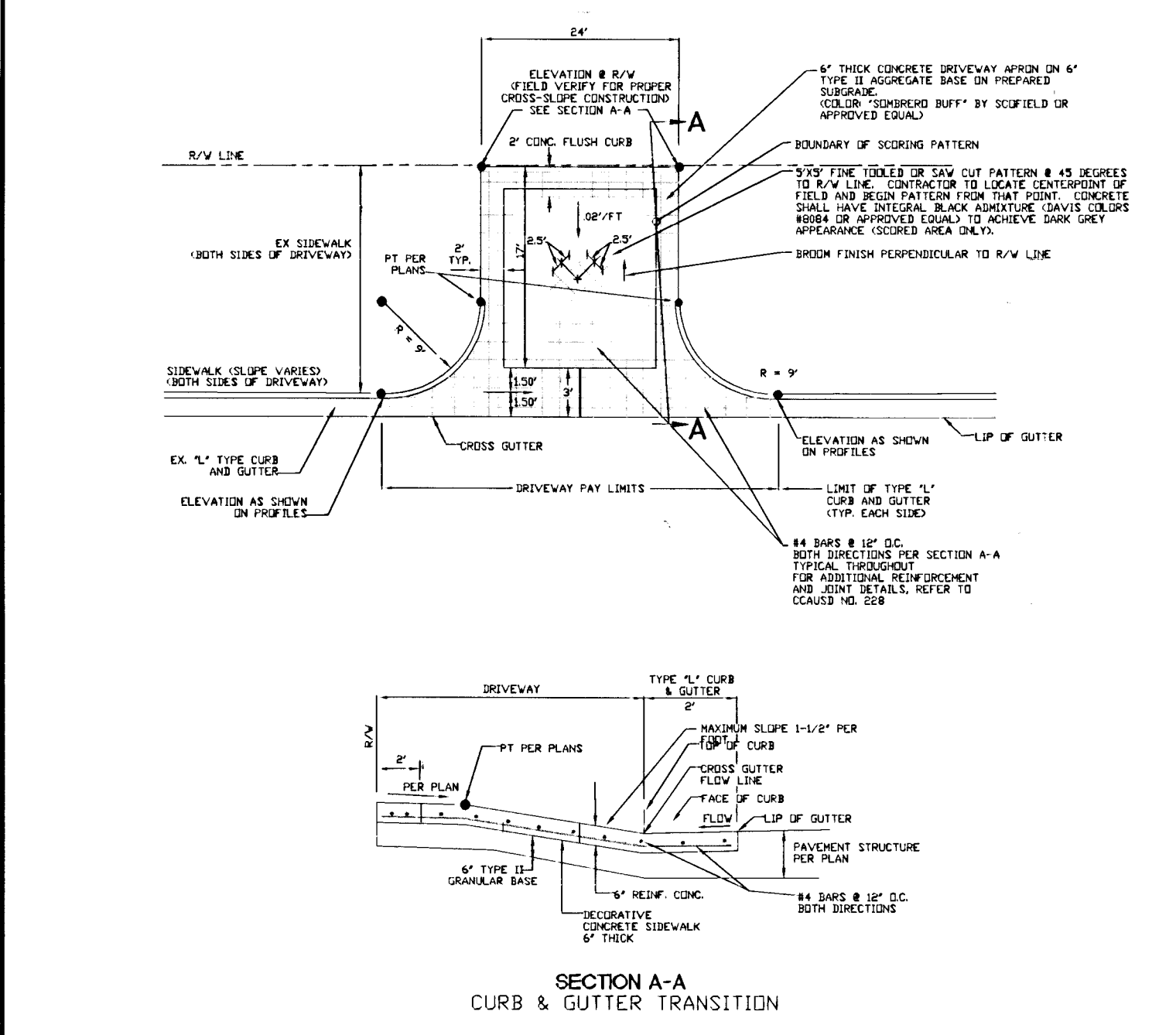
**D SECTION NORTH 10TH STREET** NOT TO SCALE



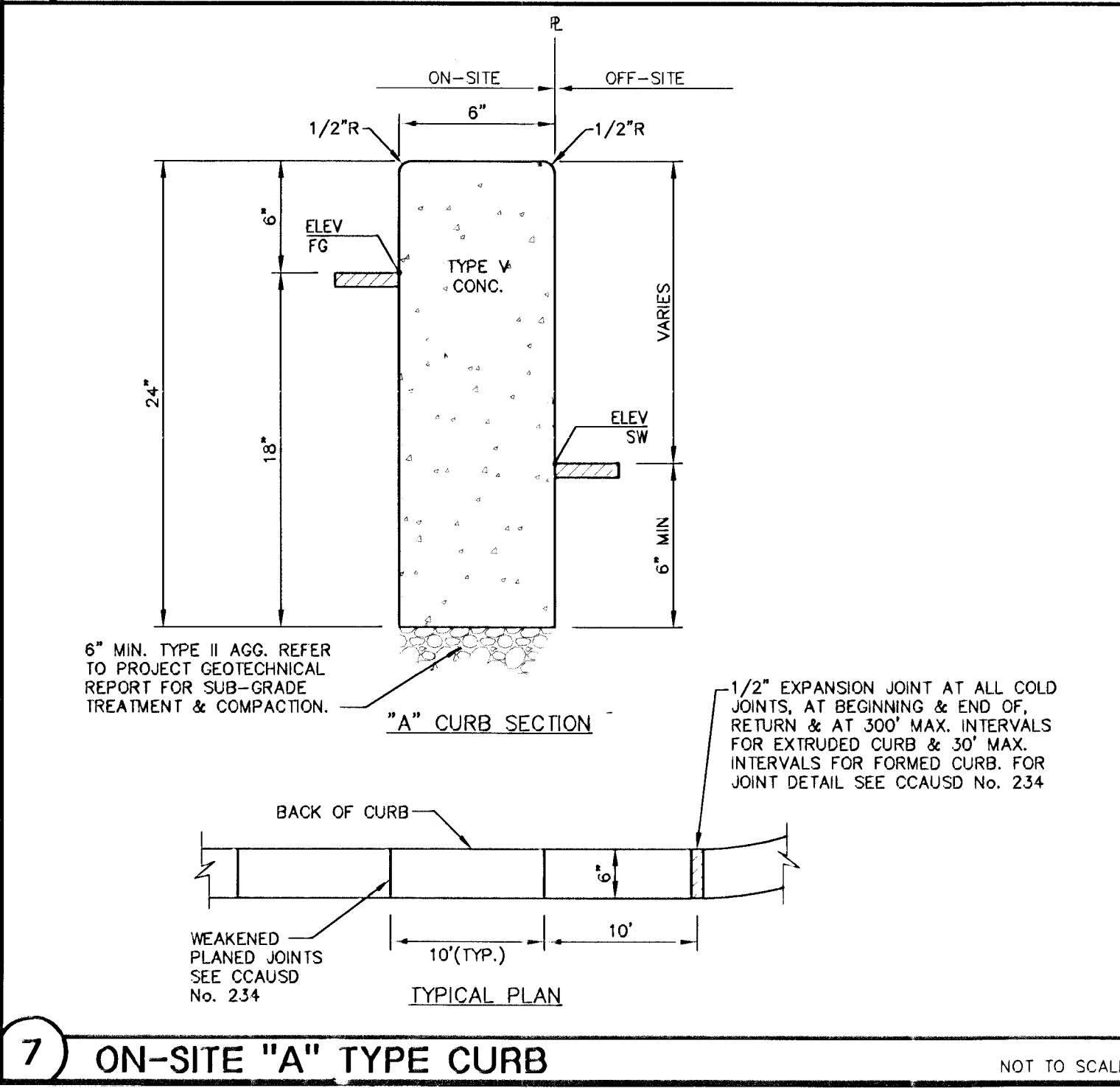
**E SECTION FREMONT STREET** NOT TO SCALE



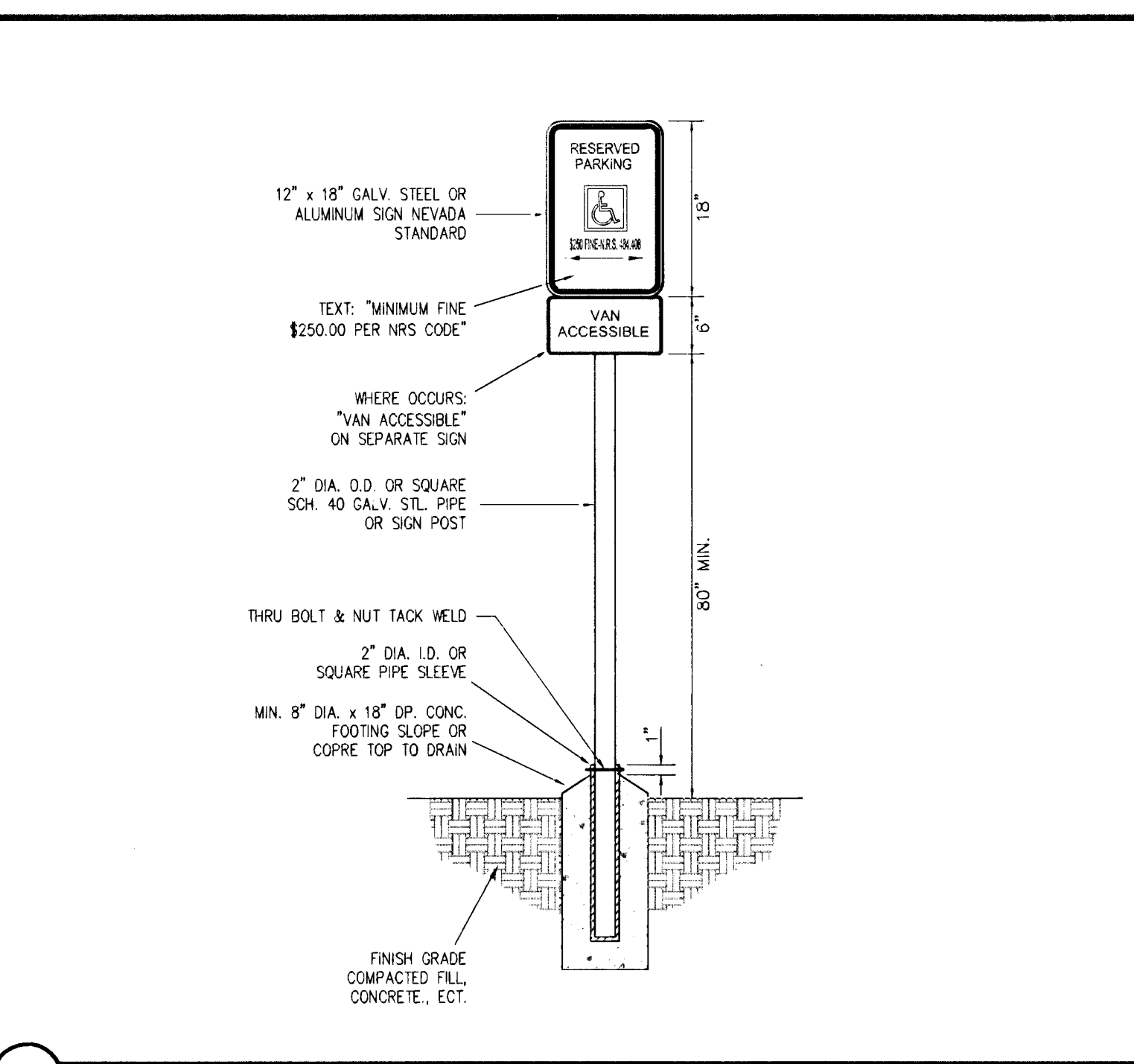
**9 SIDEWALK RAMP** NOT TO SCALE



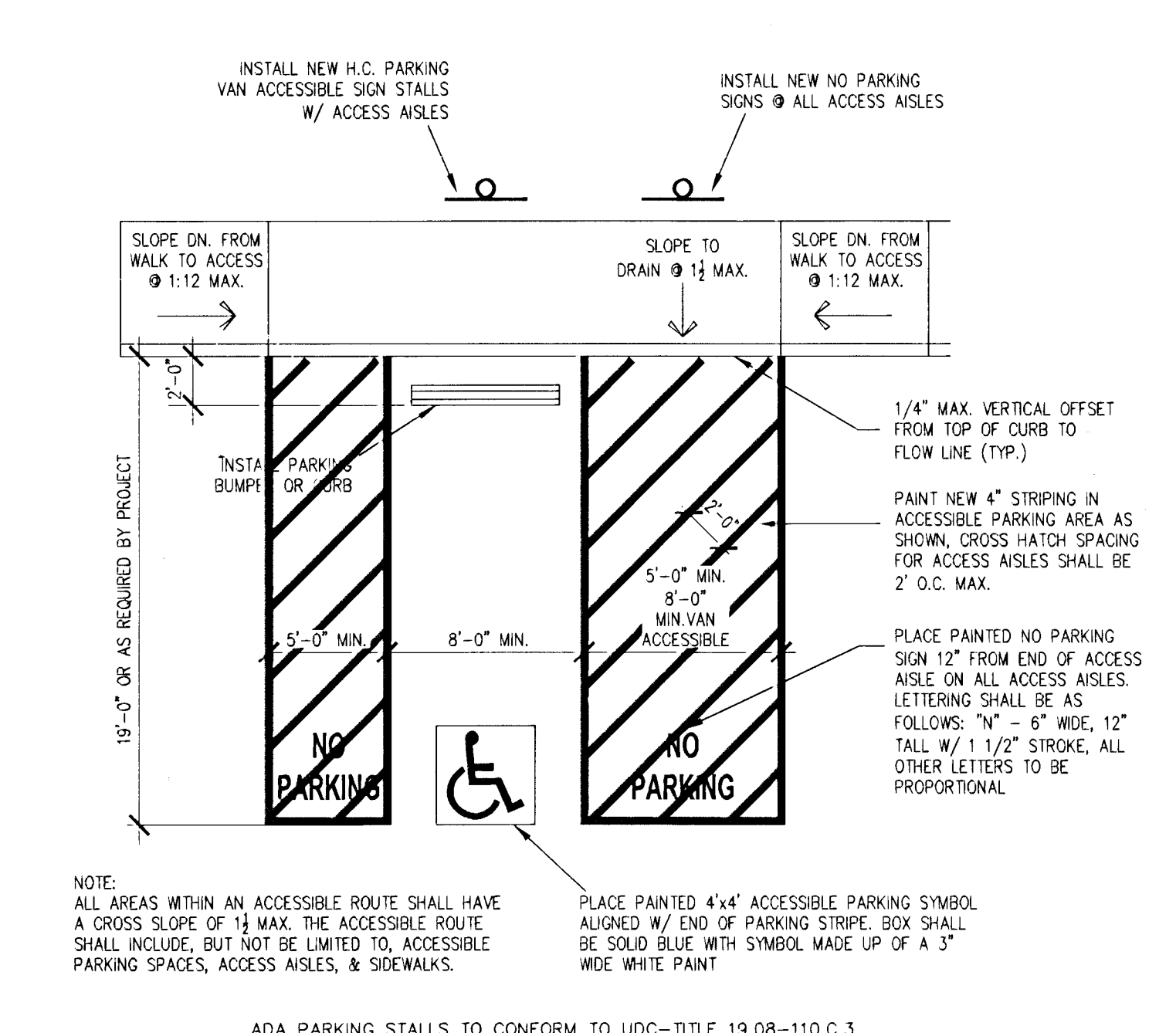
**8 DRIVEWAY DETAIL** NOT TO SCALE



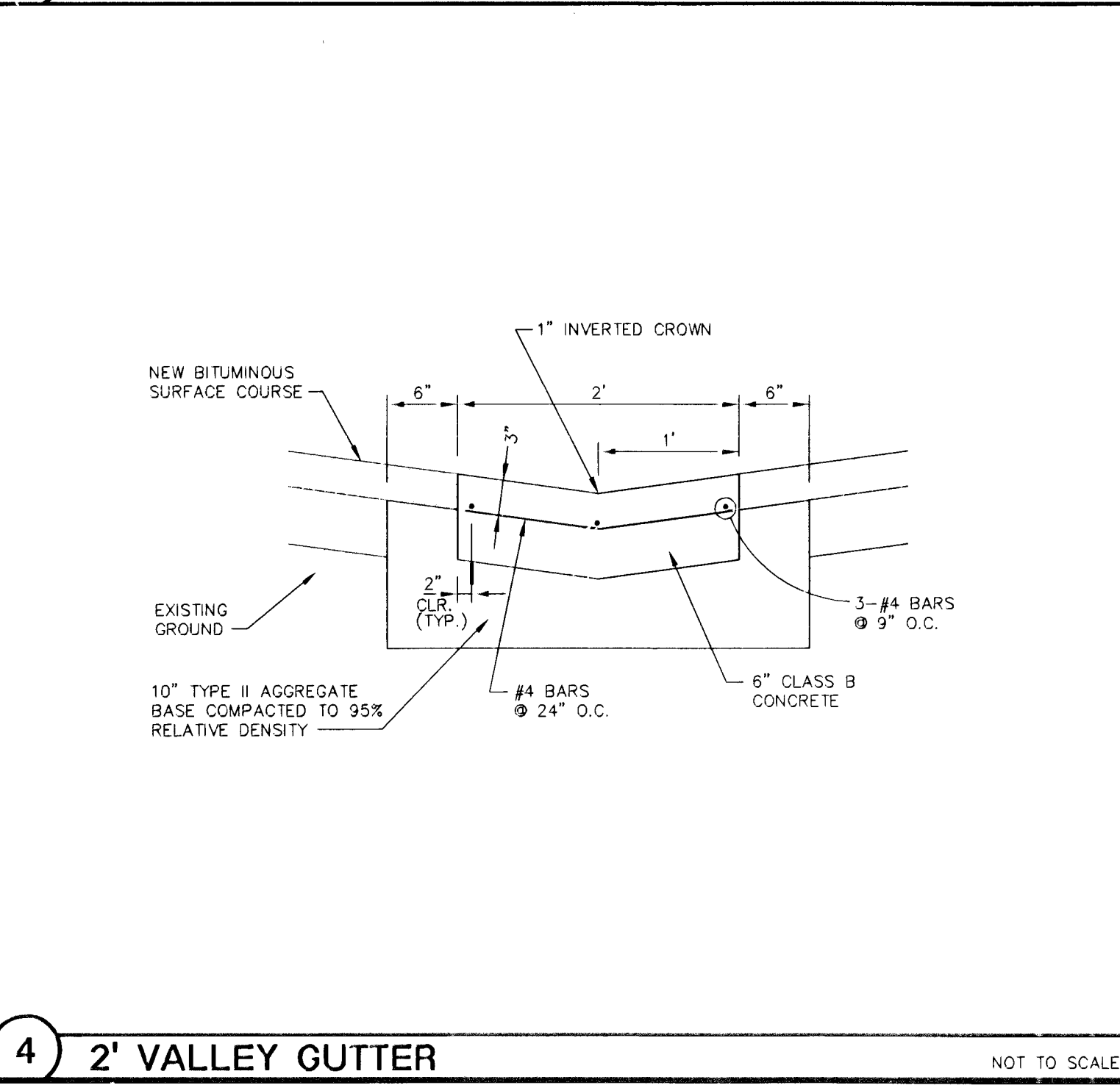
**7 ON-SITE "A" TYPE CURB** NOT TO SCALE



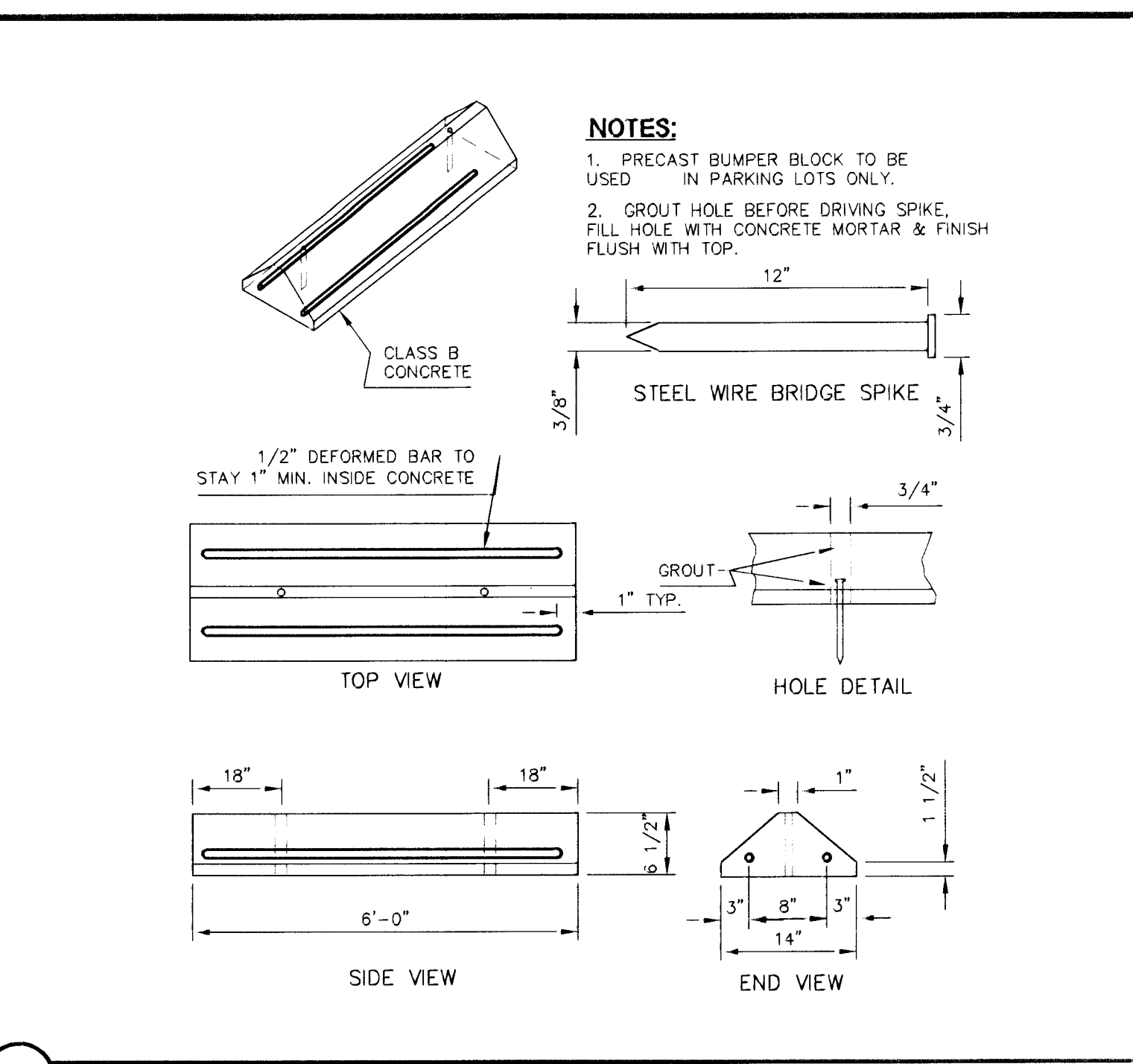
**6 ACCESSIBLE PARKING SIGN** NOT TO SCALE



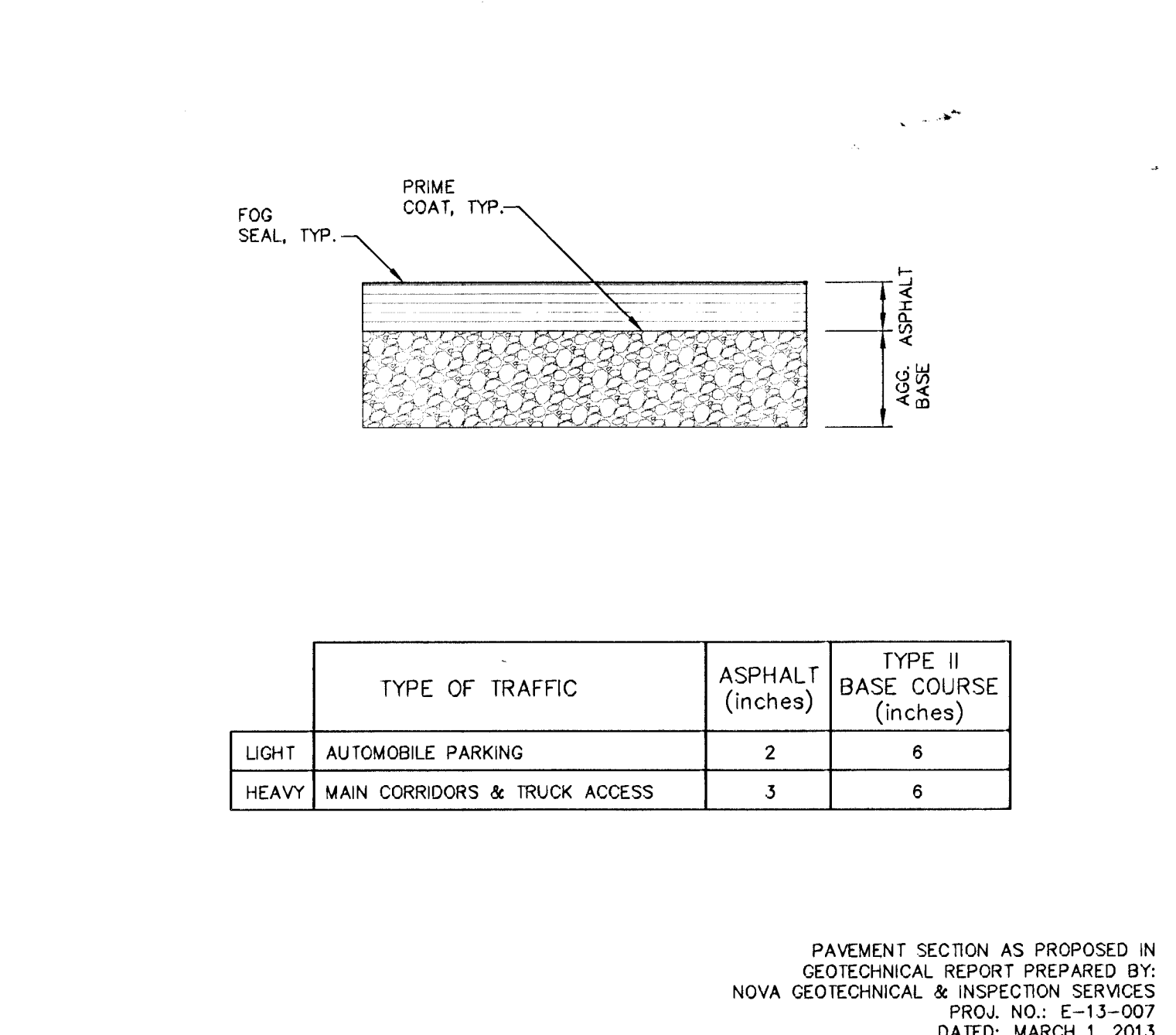
**5 ACCESSIBLE PARKING DETAIL** NOT TO SCALE



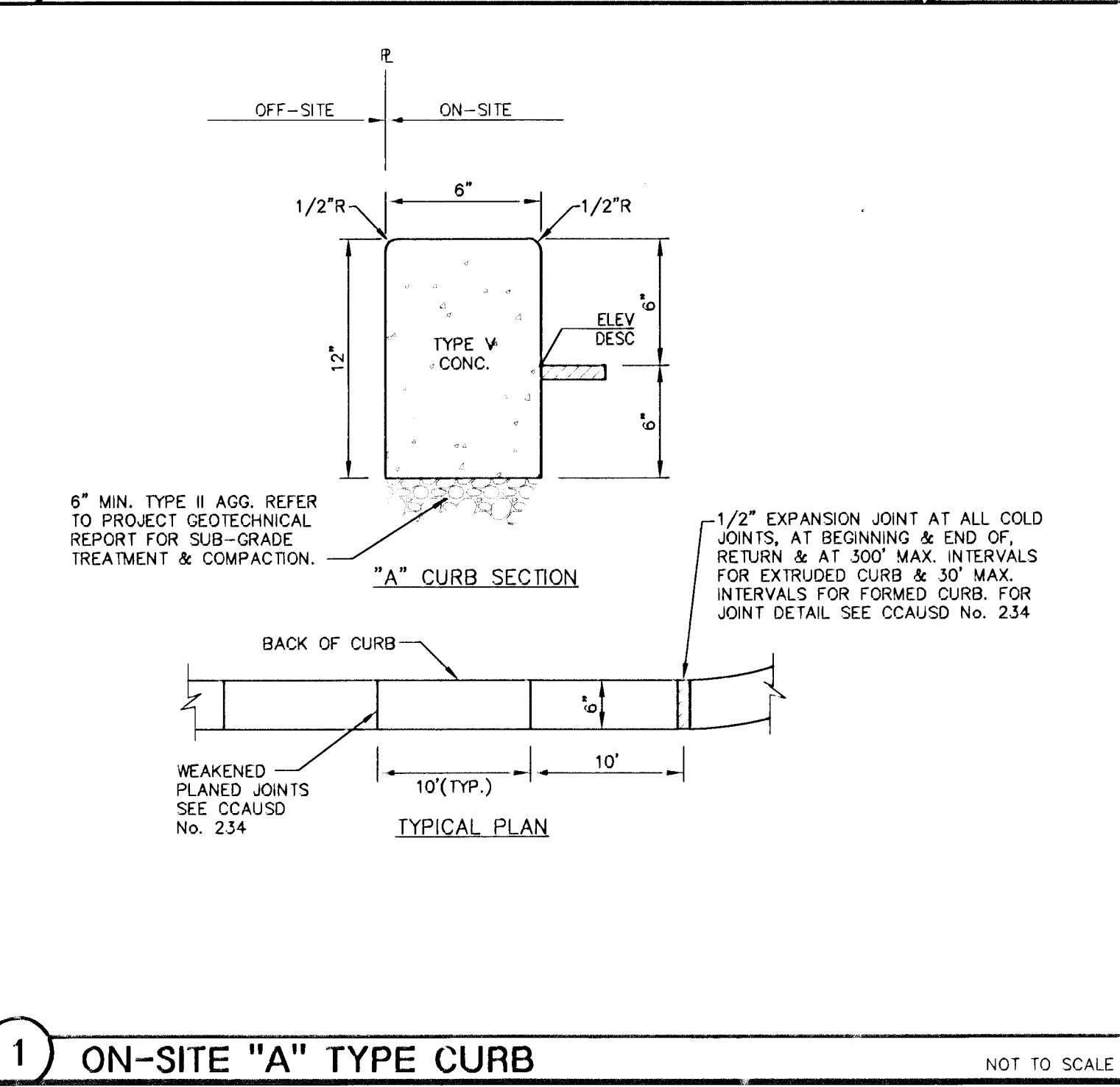
**4 2' VALLEY GUTTER** NOT TO SCALE



**3 WHEEL STOP** NOT TO SCALE



**2 AC PAVEMENT SECTION** NOT TO SCALE



**1 ON-SITE "A" TYPE CURB** NOT TO SCALE

**Lochsa Engineering**

6345 South Jones Blvd.  
 Suite 100 Las Vegas, NV 89118  
 Phone (702) 385-8332  
 Fax (702) 385-8317  
 www.lochsa.com

**DETAIL SHEETS SHEET 1 OF 2**

**LLAMA LOT LAS VEGAS, NEVADA**

SHEET PROJECT No. 131005  
 DATE: 08/28/13  
 SCALE: NONE  
 DRAWN BY: N.M.G.  
 DESIGNED BY: N.M.G.  
 CHECKED BY: G.M.M.

PAVEMENT SECTION AS PROPOSED IN GEOTECHNICAL REPORT PREPARED BY: NOVA GEOTECHNICAL & INSPECTION SERVICES PROJ. NO.: E-13-007 DATED: MARCH 1, 2013

SEAL  
 GUY M. MORRIS  
 EXP. 12-31-13  
 CIVIL  
 No. 14526  
 08-05-13  
 SHEET No. C6.01  
 SHEET 7 OF 8  
 TITLE: ON-SITE "A" TYPE CURB