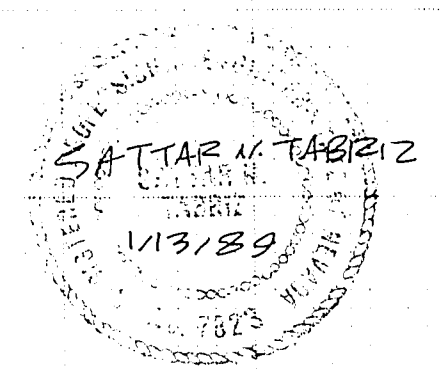
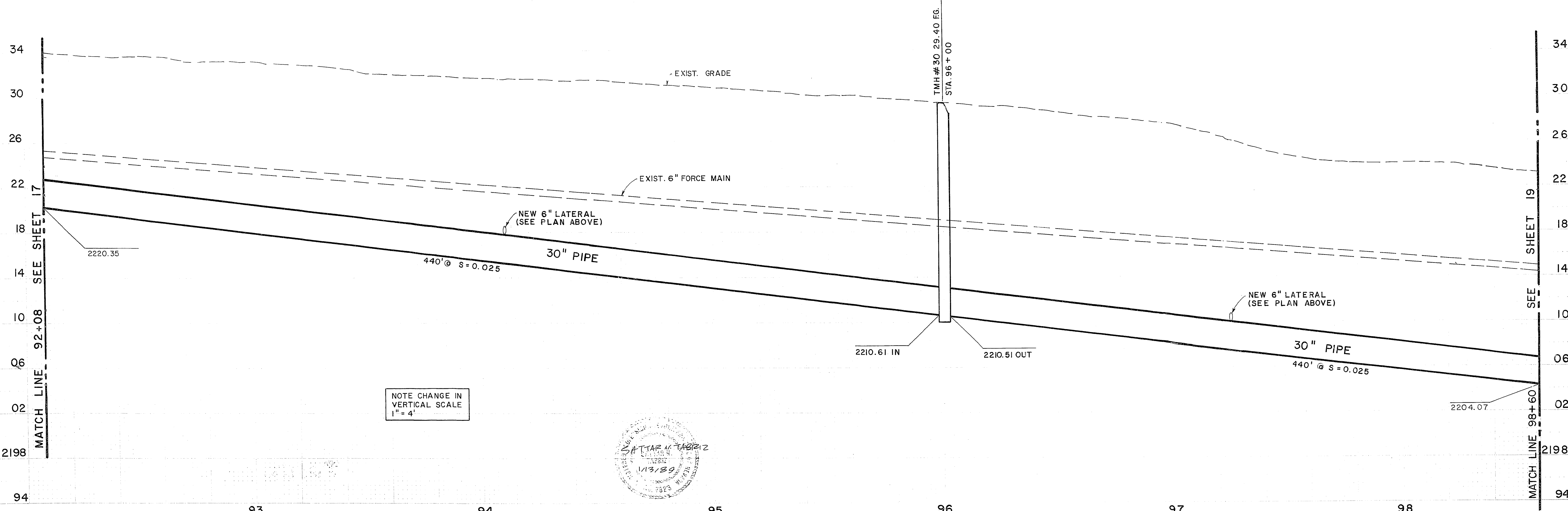


N 9588.975
E 19464.922

MH # 30
STA. 96+00



2 1-20-89 ST REVISIONS		Job No. 48901.00	Designed by S.N.T&KJE	Proj. Dir. KS & ST	URS CONSULTANTS INC Engineering and Environmental Consultants Las Vegas, Nevada	CITY OF LAS VEGAS CHEYENNE / WESTSIDE INTERCEPTOR	PLAN & PROFILE CHEYENNE AVE. STA. 92+08 TO 98+60	SHEET 18 27
1 12-28-88 ST CITY'S 95% COMPLETION REVIEW COMMENTS		SCALE 1" = 20' HORIZ. 1" = 4' VERT.	Drawn by D.J.M & CDM	Approved by M.G. & ST				
No.	DATE	BY	REVISION	Checked by KS & ST	Date 9-30-88			