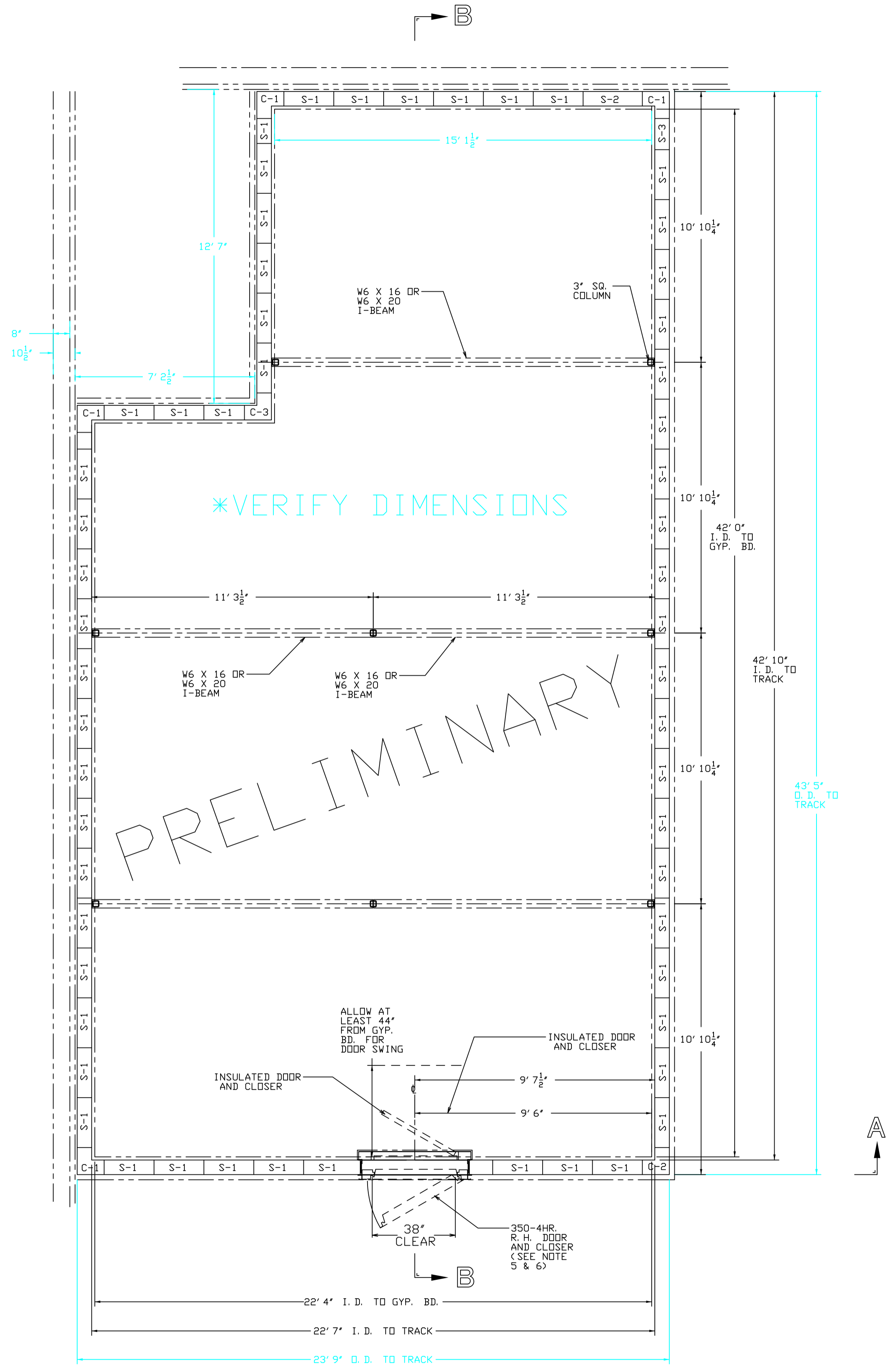


NOTE: SHEETROCK MUST BE APPLIED TO VAULT INTERIOR AND EXTERIOR EXPOSED SIDEWALLS IN ORDER TO QUALIFY FOR FIRELOCK'S CERTIFICATION PROGRAM.



*VERIFY DIMENSIONS

PRELIMINARY

SIDEWALL PLAN

NOTES

- 1) OWNER/PURCHASER MUST SUPPLY 240 VOLT AC - 30 AMP POWER SUPPLY PLUG IN AREA OF VAULT TO RUN WELDING MACHINE.
- 2) SAFETY GLASSES, WORK BOOTS, LEATHER GLOVES AND DUST MASK TO BE WORN WHEN HANDLING PANELS.
- 3) VAULT TO BE ASSEMBLED BY FIRELOCK INSTALLERS (EXCEPT FINISHOUT WORK AS DETAILED IN 'WORK BY OTHERS' BELOW)
- 4) FIRELOCK TO PROVIDE CABLE TRAY UNITS FOR WIRE PENETRATIONS. - SEE CABLE TRAY DETAIL ON SHEET 2
- 5) THE VAULT DOOR AREA MUST HAVE A SMOOTH AND LEVEL FLOOR. ANY BUMPS IN THE FLOOR NEAR THE DOOR AREA WILL CAUSE THE VAULT DOOR TO BE IMPEDED FROM CLOSING OR CREATE GAPS WHICH COULD POSE A HAZARD TO THE VAULT SYSTEM.
- 6) VAULT DOORS ARE TO BE SET WITH A DOOR STOP SO THAT THE VAULT DOOR ONLY OPENS TO 120 DEG. TO ASSURE THE DOOR CLOSER WILL SEAL THE VAULT DOOR IN EVENT OF SMOKE, HEAT OR POWER FAILURE. DUE TO THE WEIGHT OF THE VAULT DOOR, THE DOOR CANNOT BE SET AT 180 DEG. OPEN. THE DOOR CAN BE SET AT 90 DEG. OR UP TO 120 DEG. OPEN FOR MAXIMUM EFFICIENCY OF THE CLOSER.
- 7) DO NOT REST HVAC EQUIPMENT ON TOP OF ROOF CORRUGATIONS. IT IS RECOMMENDED THAT THE HEAVY WEIGHT OF THE HVAC BE SUSPENDED FROM THE RED IRON STRUCTURAL STEEL ABOVE THE VAULT. IF THIS IS NOT POSSIBLE, PLACE 2" X 3" TREATED LUMBER IN BOTTOM OF CORRUGATIONS TO TRANSFER WEIGHT LOADS OF HVAC UNIT TO THE TOP OF THE VAULT WHERE STRENGTH IS GREATER.
- 8) IF EQUIPMENT IS PLACED ON THE VAULT ROOF, IT SHOULD BE CENTERED OVER THE STRUCTURAL SUPPORT STEEL OR NEAR THE CORNERS OF THE VAULT.
- 9) DOOR ASSEMBLY IS DESIGNED TO ACCOMMODATE FLOOR COVERING UP TO 1/4" THICKNESS ON A FLAT LEVEL CONCRETE FLOOR SURFACE. IF FLOOR COVERING REQUIRES ADDITIONAL CLEARANCE, CONTACT FIRELOCK TO REVISE DOOR ASSEMBLY DETAILS.

DESIGN

- D1) VAULT AREA SHOULD BE EQUIPPED TO ALLOW FOR REMOVAL OF WATER IN THE EVENT OF FLOODING, SPRINKLER ACTIVATION, OR MAIN BREAK.
- D2) NO PENETRATIONS OF VAULT SHALL OCCUR AFTER COMPLETION OF VAULT WITHOUT NOTIFICATION TO FIRELOCK FOR REVIEW AND EVALUATION.
- D3) FIRE SUPPRESSION PIPING TO BE COORDINATED WITH VAULT CEILING INSTALLATION.
- D4) ALL SHELIVING TO BE SET A MINIMUM OF 3" ABOVE FINISHED FLOOR PER NFPA.
- D5) ALL LIGHT FIXTURES TO BE CONNECTED BY A SCREW FASTENER RIGID CONDUIT WITH DUST/VAPOR RESISTANT LIGHTING.

WORK BY OWNER/GENERAL CONTRACTOR

- C1) 5/8" FIRERATED GYPSUM BOARD ON GALVANIZED STEEL FIRING STRIPS/STUDS ON ALL INTERIOR VAULT WALLS, CEILING AND EXTERIOR EXPOSED VAULT WALLS TAPE/FLDAT/PAINT FINISH, HVAC, FLOOR COVERING, WIRING AND LIGHTING.
- C2) PROVIDE LEVEL FLOOR SURFACE AT EXPANSION JOINTS IN FLOOR, AS WELL AS PAINTING & SEALING OF CONCRETE FLOOR- GLOSS WHITE/SAND COAT RECOMMENDED
- C3) ALL DUST & VAPOR RESISTANT LIGHT FIXTURES WITHIN VAULT, ALL CONDUIT AND ELECTRICAL SERVICE FOR LIGHT FIXTURES, EMERGENCY BACKUP, TRICKLE-CHARGE LIGHT FIXTURE AS REQUIRED FOR EGRESS FROM THE VAULT IN A POWER FAILURE.
- C4) ELECTRICAL REQUIREMENTS FOR FIRE ALARMS, FIRE SUPPRESSION SYSTEM, SMOKE DETECTORS AND CONVENIENCE OUTLETS AND WIRING FOR PHONE SERVICE.
- C5) ALL WATER SPRINKLER SYSTEMS, PIPING AND HEADS AS REQUIRED BY OWNER.
- C6) ANY HVAC SYSTEM REQUIRED TO SERVICE VAULT INTERIOR AND PROVIDE ENVIRONMENTAL CONTROL OVER THE VAULT INTERIOR.
- C7) ANY FLOOR TILE OR PAINTED FLOOR FINISH AS SPECIFIED BY OWNER.
- C8) ANY WELDING PERMITS SHOULD BE OBTAINED BY GENERAL CONTRACTOR OR OWNER PRIOR TO THE FIRELOCK INSTALLATION TEAM'S ARRIVAL ON SITE.
- C9) OWNER/GENERAL CONTRACTOR TO SUPPLY LOUVER DAMPERS FOR HVAC UNITS.
- C10) EXTRA COSTS RELATING TO LOCAL REQUIREMENTS FOR THE USE OF SPECIALTY UNION CRAFTSMAN, CERTIFIED STRUCTURAL WELDERS OR OTHER WORKERS IN ADDITION TO FIRELOCK'S FACTORY TRAINED INSTALLERS WILL BE ADDED TO QUOTED PRICE.

SHEETROCK (BY OTHERS) MUST BE APPLIED TO VAULT INTERIOR AND EXPOSED EXTERIOR SIDEWALL SURFACES IN ORDER TO QUALIFY FOR FIRELOCK'S CERTIFICATION PROGRAM.


PATENT ENFORCEMENT

1) THE FIRELOCK MODULAR VAULT PANEL SYSTEM IS A PATENTED SYSTEM AND IS PROTECTED UNDER UNITED STATES OF AMERICA PATENT LAW. PATENT #4744186. ANY USE OF THIS SYSTEM OR ITS DESIGN ELEMENTS IS EXPRESSLY PROHIBITED.

ALTERATION

NO.	ZONE	DATE	REMARKS	DR.	CHKD.

THIS DRAWING IS THE PROPERTY OF FIRELOCK DATA PROTECTION SYSTEMS. IT IS FURNISHED TO YOU FOR CONFIDENTIAL INFORMATION PURPOSES ONLY AND IS NOT TO BE DISCLOSED TO ANYONE ELSE OR REPRODUCED OR USED FOR CONSTRUCTION PURPOSES WITHOUT THE EXPRESSED WRITTEN PERMISSION OF FIRELOCK DATA PROTECTION SYSTEMS.

TITLE: FIRELOCK CL 125-2HR., 350-4HR. GENERAL ARRANGEMENT DRAWING	
CUSTOMER: LAS VEGAS RECORDS CENTER LAS VEGAS, NV	
 <p>KUTZTOWN, PENNSYLVANIA (610)-756-4440</p>	SCALE: 1" = 4'-0" OR AS NOTED
	DRWN. BY: L. C. L. DATE: 5/19/16
	CHKD. BY: H. W. S. DATE: 5/19/16
	APPD. BY:
SHEET NUMBER 1 OF 2	

DRWG. NO. LVR-16-1