

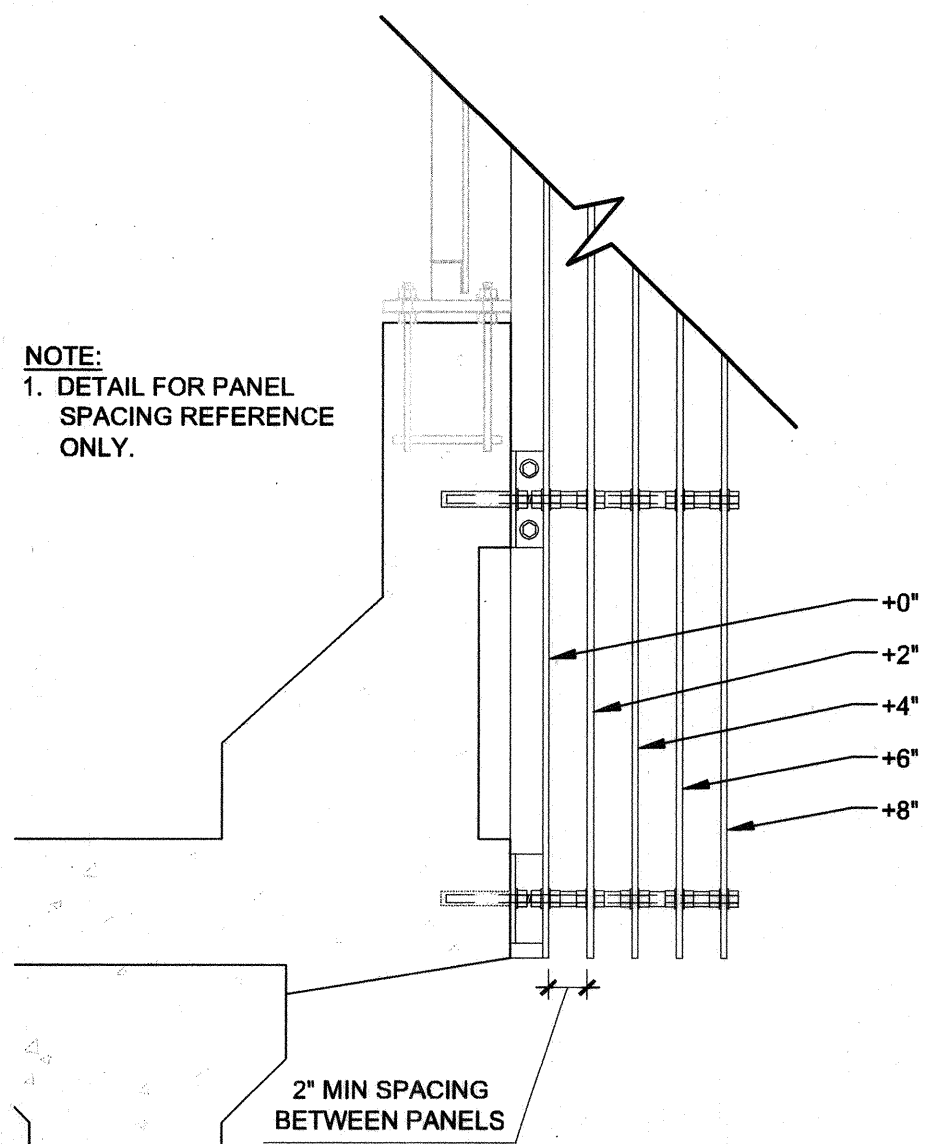
NOTICE TO BIDDERS

- PROSPECTIVE BIDDERS SHALL NOTE THAT THE PLANS FOR THE BRIDGE, ASSOCIATED RAMPS ON THIS SHEET ARE SHOWN FOR INFORMATION PERTAINING TO AESTHETIC FINISHES, TREATMENTS AND DESIGN INTENT ONLY. BRIDGES HAVE NOT BEEN PLAN CHECKED DUE TO THE FACT THAT SEVERAL MANUFACTURERS HAVE BEEN IDENTIFIED AS BEING ACCEPTABLE FOR USE IN THE PROJECT.
- BASED ON APPROVED PRODUCT SUBMITTALS, THE CONTRACTOR SHALL BE RESPONSIBLE FOR PROVIDING ALL REQUIRED SHOP DRAWINGS, SHOWING EXACT SIZES, CONNECTION METHODS, AESTHETIC TREATMENTS AND OTHER NECESSARY CALCULATIONS PREPARED BY A NEVADA STATE LICENSED ENGINEER, THAT ARE REQUIRED FOR REVIEW AND APPROVAL OF THE CITY OF LAS VEGAS BUILDING DEPARTMENT (DEFERRED SUBMITTAL).
- THE CONTRACTOR SHALL BE RESPONSIBLE FOR MAKING APPLICATION PAYING FOR AND SECURING ALL REQUIRED BUILDING DEPARTMENT PERMITS.

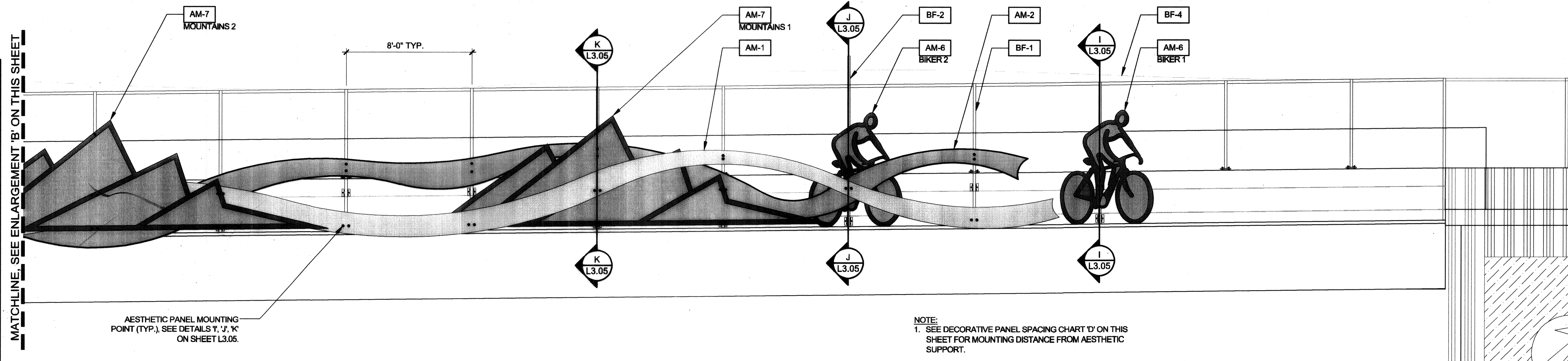
DECORATIVE PANEL SPACING CHART

DECORATIVE PANEL	SPACING FROM AESTHETIC SUPPORT
WAVE 1	+6"
WAVE 2	+2"
WALKER	+0"
DOG WALKER	+4"
RUNNER 1	+4"
RUNNER 2	+4"
BIKER 1	+0"
BIKER 2	+0"
MOUNTAINS 1	+4"
MOUNTAINS 2	+8"
MOUNTAINS 3	+0"

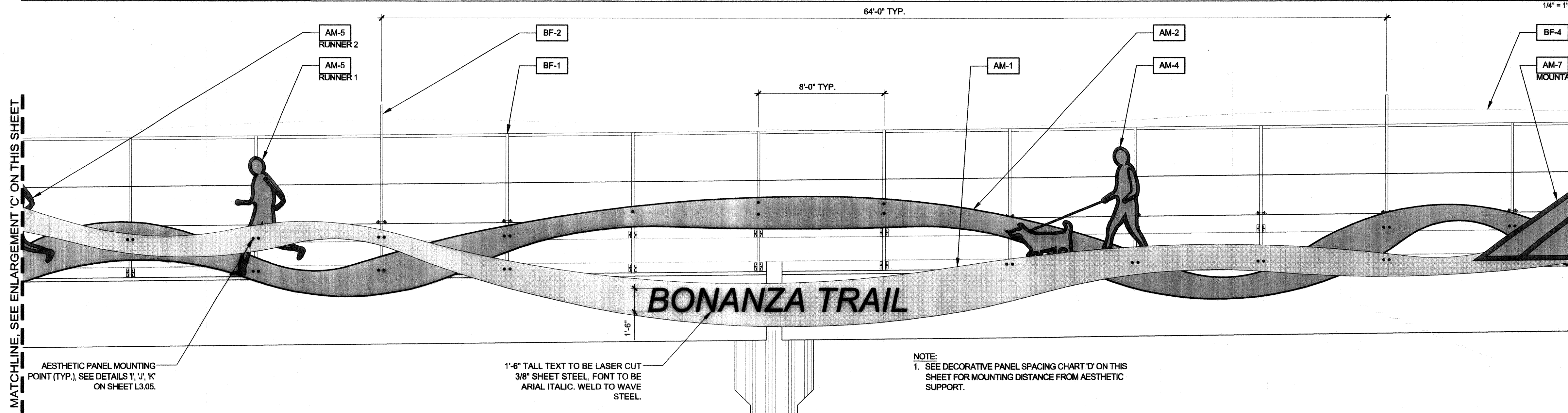
NOTE:
1. DETAIL FOR PANEL SPACING REFERENCE ONLY.



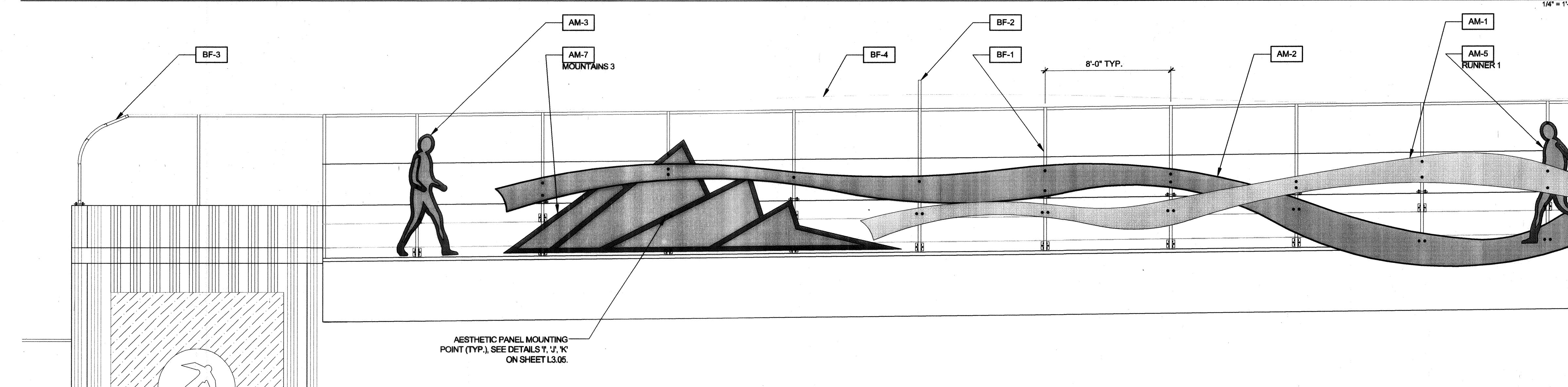
D DECORATIVE PANEL SPACING



A BRIDGE ELEVATION ENLARGEMENT 1



B BRIDGE ELEVATION ENLARGEMENT 2



C BRIDGE ELEVATION ENLARGEMENT 3

PREPARED BY: DEPARTMENT OF PUBLIC WORKS CAPITAL PROJECT MGMT

CITY OF LAS VEGAS

DATE: JANUARY 2018

DESIGNED BY: MED

DRAWN BY: MED

CHECKED BY: SWS

100% FINAL

CIMARRON PEDESTRIAN BRIDGE AT SUMMERLIN PARKWAY

BRIDGE AESTHETIC DETAILS

SHEET L3.06

77 OF 86

DRAWING NO. 676-22

FEDERAL PROJECT NUMBER: CM-0003(180)

REVISIONS

NO. DATE

REGISTERED LANDSCAPE ARCHITECT

STATE OF NEVADA

895

Engineer 6-30-18