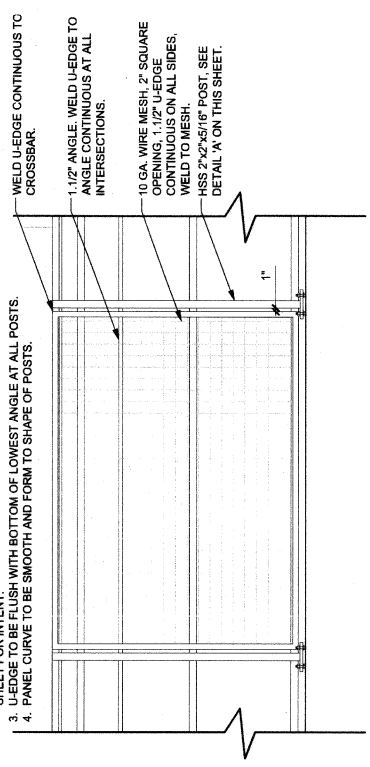
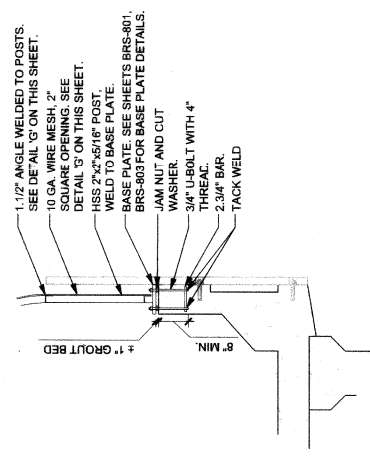


- NOTES:
1. LEDGE TO BE FLUSH WITH TOP OF CROSS BAR AT APPROACH RAMP POSTS.
 2. TOP U-LEDGE OF EACH PANEL TO FORM CONTINUOUS CURVE ABOVE BRIDGE FENCE POSTS. SEE SHEET L3.01 FOR PLAN AND DETAILS 'B' AND 'C' ON THIS SHEET FOR INTENT.
 3. FINISH WITH BOTTOM OF LOWEST ANGLE AT ALL POSTS.
 4. PANEL CURVE TO BE SMOOTH AND FORM TO SHAPE OF POSTS.



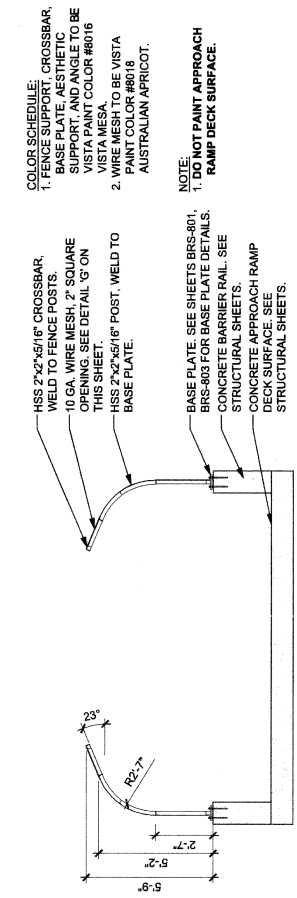
G WIRE MESH CONNECTION

1/2" = 1'-0"



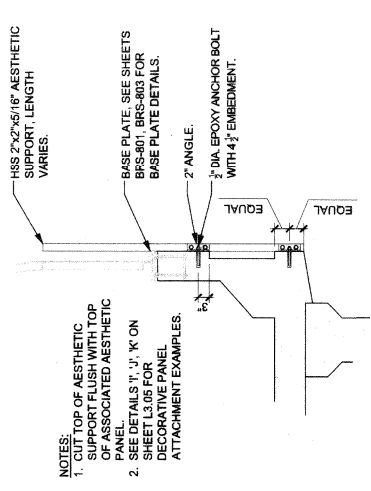
D FENCE POST CONNECTION

1/2" = 1'-0"



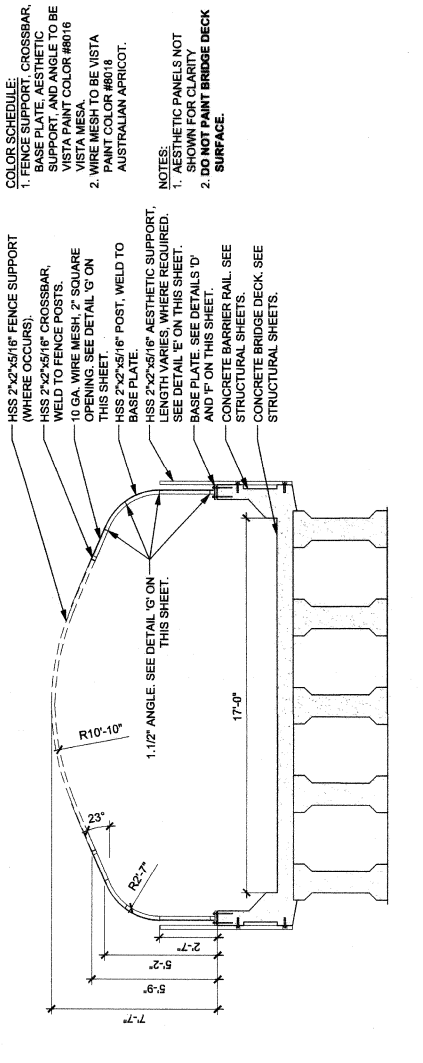
H APPROACH RAMP TYPICAL SECTION

1/2" = 1'-0"



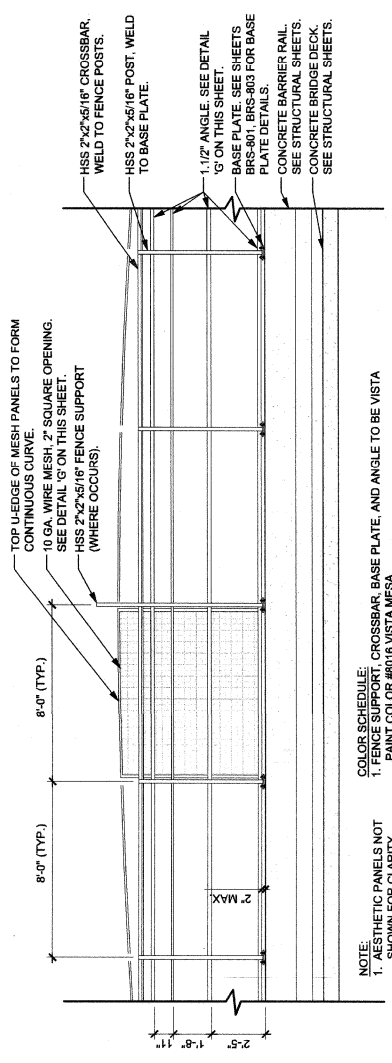
E AESTHETIC SUPPORT CONNECTION

1/2" = 1'-0"



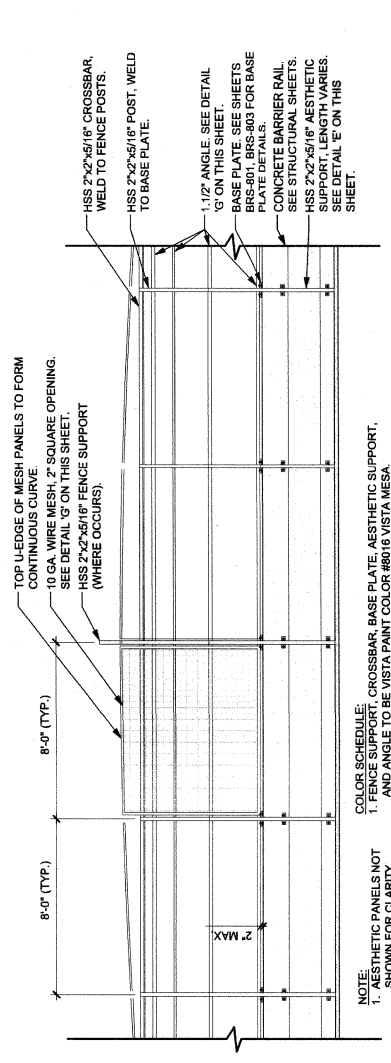
A TYPICAL BRIDGE SECTION

1/4" = 1'-0"



B TYPICAL BRIDGE ELEVATION (INSIDE)

1/4" = 1'-0"



C TYPICAL BRIDGE ELEVATION (OUTSIDE)

1/4" = 1'-0"

NOTICE TO BIDDERS

- PROSPECTIVE BIDDERS SHALL NOTE THAT THE PLANS FOR THE BRIDGE, ASSOCIATED RAMPS ON THIS SHEET ARE SHOWN FOR INFORMATION PERTAINING TO AESTHETIC FINISHES, TREATMENTS AND DESIGN INTENT ONLY. BRIDGES HAVE NOT BEEN PLAN CHECKED DUE TO THE FACT THAT SEVERAL MANUFACTURERS HAVE BEEN IDENTIFIED AS BEING ACCEPTABLE FOR USE IN THE PROJECT.
- BASED ON APPROVED PRODUCT SUBMITTALS, THE CONTRACTOR SHALL BE RESPONSIBLE FOR PROVIDING ALL REQUIRED SHOP DRAWINGS, SHOWING EXACT SIZES, CONNECTION METHODS, AESTHETIC TREATMENTS AND OTHER NECESSARY CALCULATIONS PREPARED BY A NEVADA STATE LICENSED ENGINEER THAT ARE REQUIRED FOR REVIEW AND APPROVAL OF THE CITY OF LAS VEGAS BUILDING DEPARTMENT (DEFERRED SUBMITTAL).
- THE CONTRACTOR SHALL BE RESPONSIBLE FOR MAKING APPLICATION PATING FOR AND SECURING ALL REQUIRED BUILDING DEPARTMENT PERMITS.