
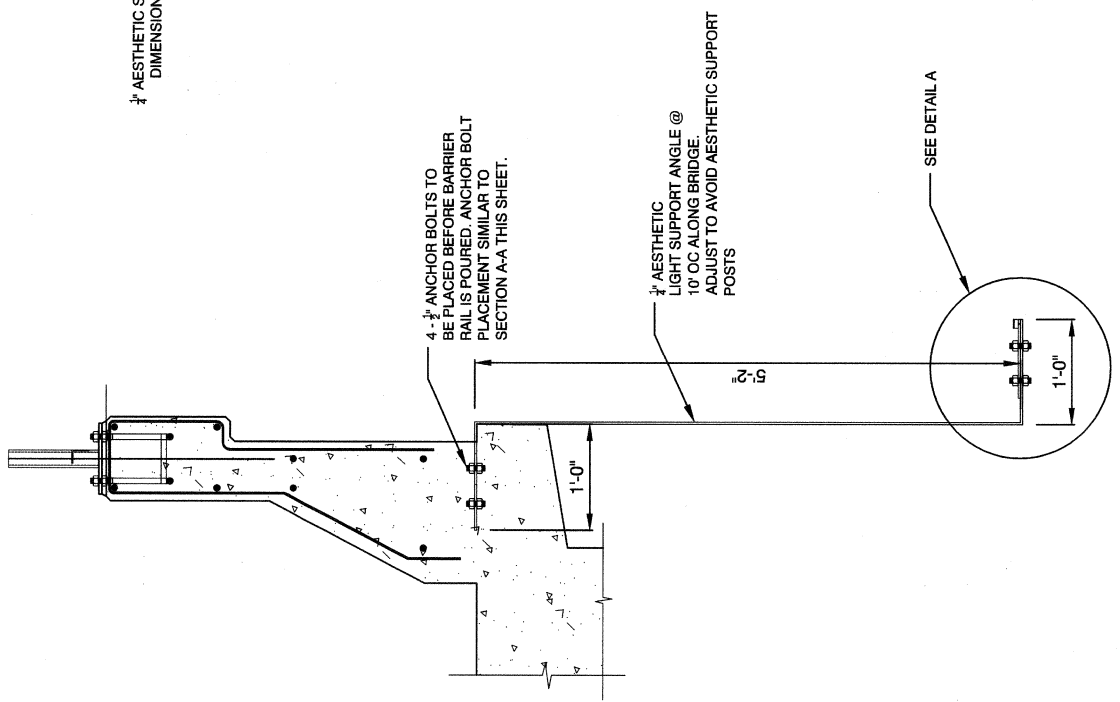
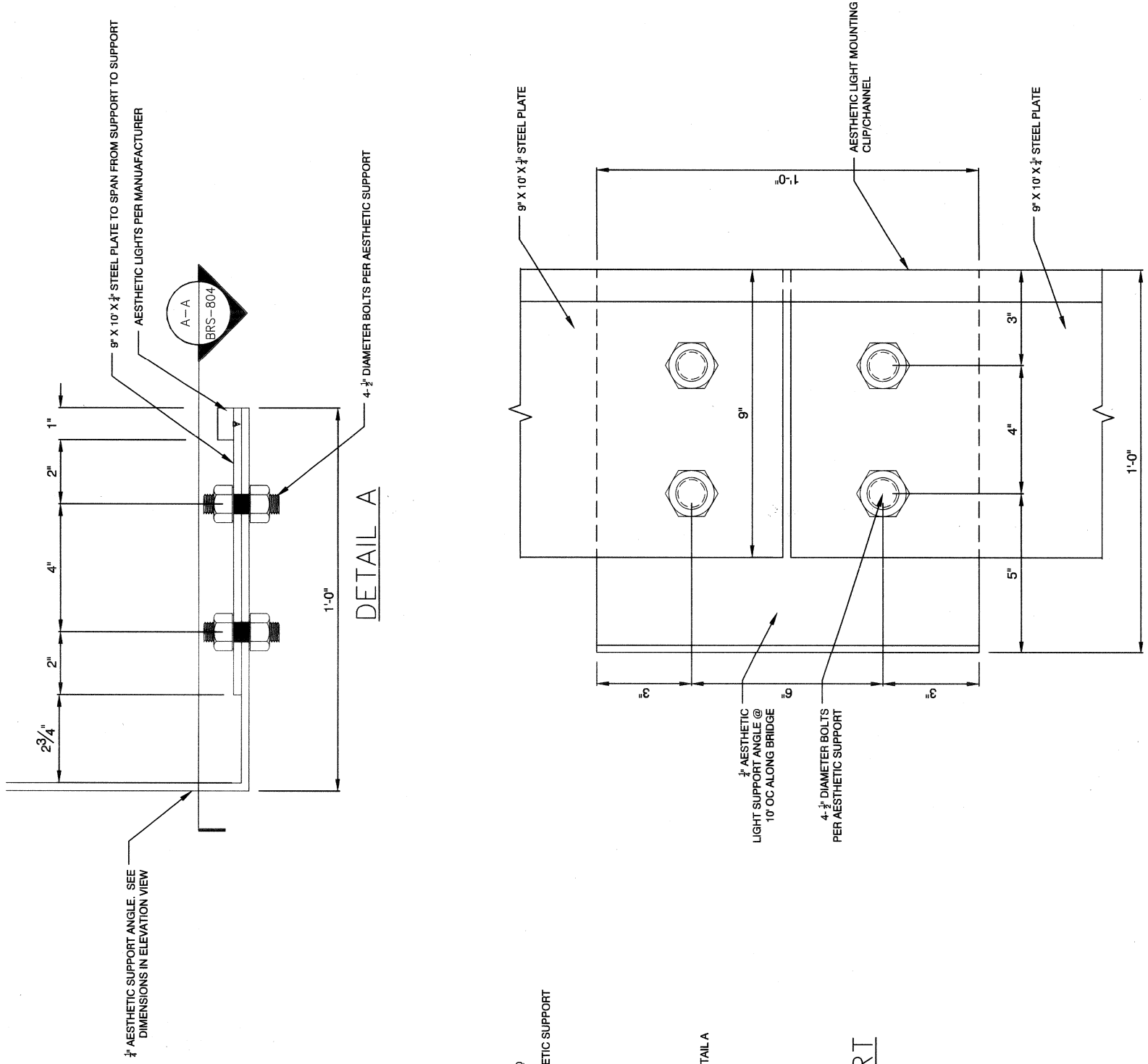
	SHEET BRS-804 62 OF 86 DRAWING NO. 676-22	CIMARRON PEDESTRIAN BRIDGE AT SUMMERLIN PARKWAY BRIDGE AESTHETIC DETAILS	PREPARED FOR CITY OF LAS VEGAS DEPARTMENT OF PUBLIC WORKS CAPITAL PROJECT MGMT 
DATE: JANUARY 2018 SUBMITTAL STAGE: 100% FINAL		DESIGNED BY: SR DRAWN BY: AG CHECKED BY: AP	
H# 48938 BID# 17.48938		6050 Graceland Ranch Road, Suite 110 Las Vegas, Nevada 89128 - (702) 255-8100 POGGEMEYER DESIGN GROUP	
NO.	DATE	REVISIONS	

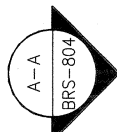
FEDERAL PROJECT NUMBER: CM-00031(80)



1/2" AESTHETIC SUPPORT ANGLE. SEE DIMENSIONS IN ELEVATION VIEW

9" X 10" X 1/2" STEEL PLATE TO SPAN FROM SUPPORT TO SUPPORT

AESTHETIC LIGHTS PER MANUFACTURER



4 1/2" DIAMETER BOLTS PER AESTHETIC SUPPORT

9" X 10" X 1/2" STEEL PLATE

1/2" AESTHETIC LIGHT SUPPORT ANGLE @ 10' OC ALONG BRIDGE

4 1/2" DIAMETER BOLTS PER AESTHETIC SUPPORT

AESTHETIC LIGHT MOUNTING CLIP/CHANNEL

9" X 10" X 1/2" STEEL PLATE

SECTION A-A