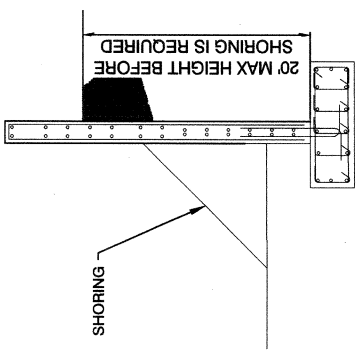
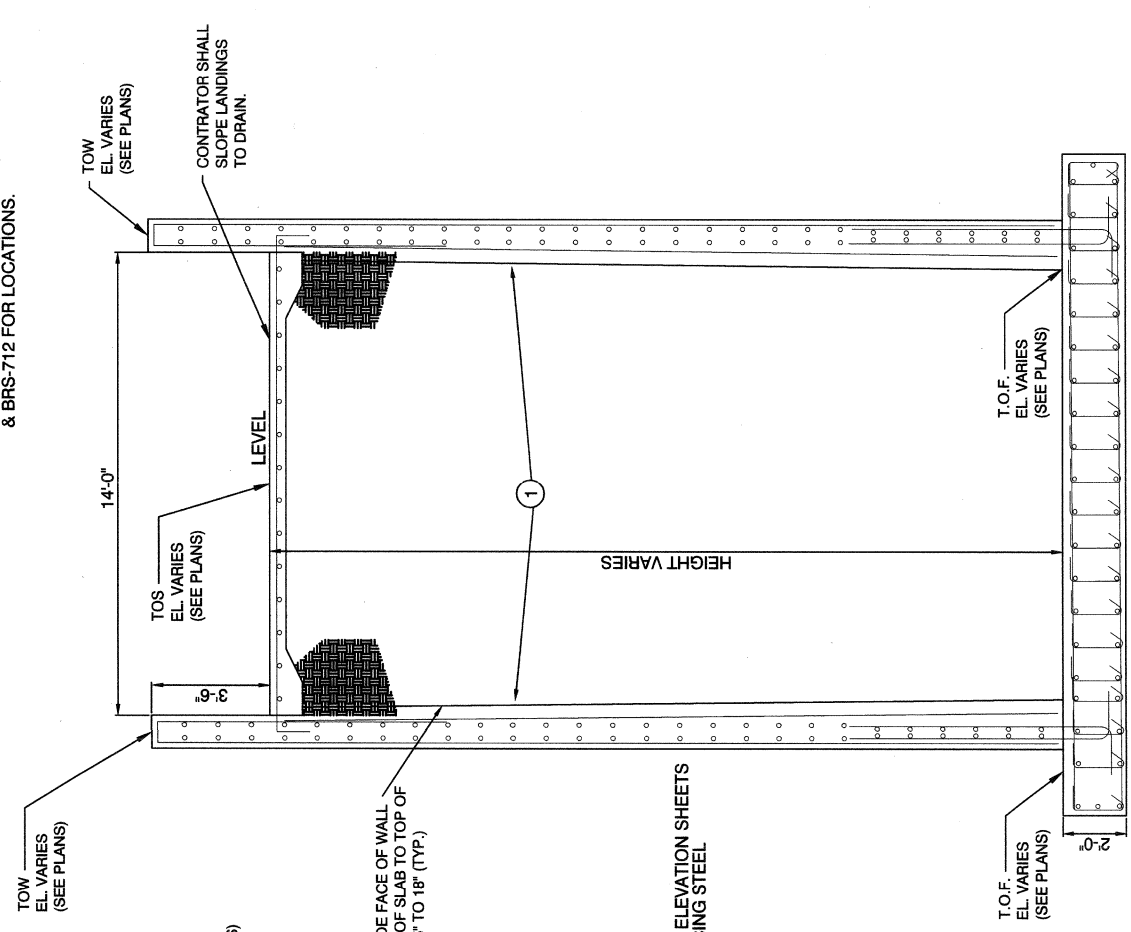


REVISIONS NO. DATE 	DESIGN GROUP POGGEMEIER 5950 Brentwood Road - Suite 110 Las Vegas, Nevada 89128 - (702) 252-8100	PREPARED FOR CITY OF LAS VEGAS DEPARTMENT OF PUBLIC WORKS CAPITAL PROJECT MGMT	CHECKED BY: AP DRAWN BY: AG DESIGNED BY: SR BID # 17 48938	SUBMITTAL STAGE: 100% FINAL DATE: JANUARY 2018 H# 48938	STRUCTURAL DETAILS SECTION CUTS AT SUMMERLIN PARKWAY CIMARRON PEDESTRIAN BRIDGE	SHEET BRS-714 58 OF 86 DRAWING NO. 676-22 FEDERAL PROJECT NUMBER: CM-00031(80)
--------------------------------------	--	---	---	---	--	---

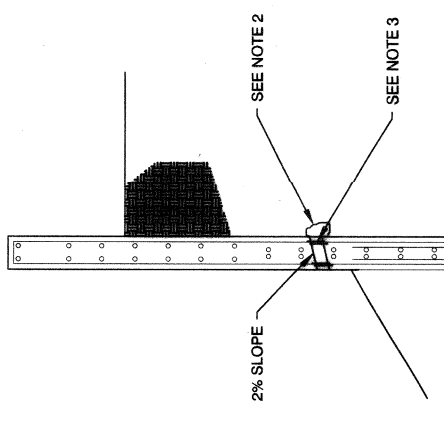
- Ramp No. 1: Interior Wall (See Sheet BRS-705)
 Ramp No. 1: North Wall (See Sheet BRS-708)
 Ramp No. 2: South Wall (See Sheet BRS-710)
 Ramp No. 2: North Wall (See Sheet BRS-712)
- NOTES:**
- SHORING SHALL BE REQUIRED WHEN THE FILL HEIGHT REACHES 20 FEET.
 - THE SHORING MAY NOT BE REMOVED UNTIL THE OPPOSITE RETAINING WALL ARE CONNECTED TO EACH OTHER THRU THE RAMP WITH THE R5162 BARS (SEE SECTIONS).
 - THE SHORING SHALL BE DESIGNED AND STAMP BY A REGISTERED PROFESSIONAL ENGINEER IN NEVADA.
- ** SEE SHEETS BRS-705, BRS-708, BRS-710, & BRS-712 FOR LOCATIONS.



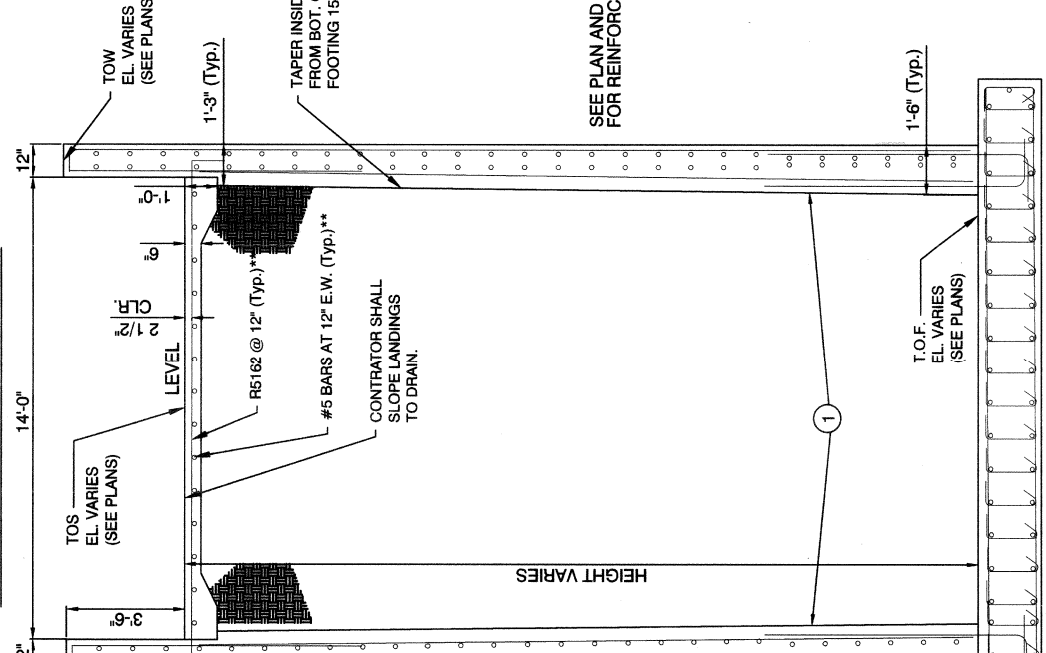
SHORING DETAIL



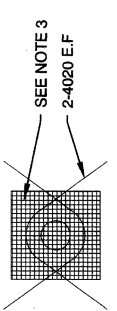
SECTION C-C
SECTION CUT - RAMP 2
 SCALE: 3/8" = 1'-0"



WEEP HOLE DETAIL

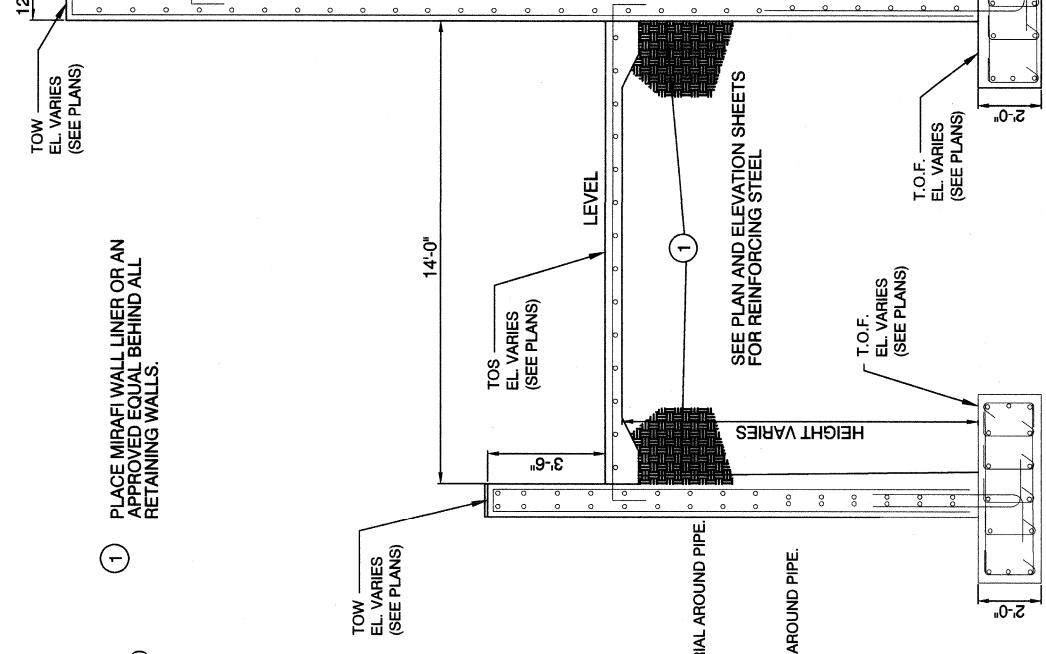


SECTION B-B
SECTION CUT - RAMP 1
 SCALE: 3/8" = 1'-0"

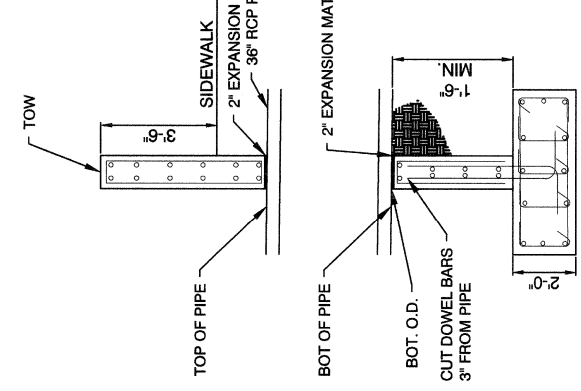


ABUTMENT / WALL WEEPHOLE DETAIL:

- WEEPHOLE NOTES:**
- 4" DIAMETER DRAINS AT 15 FEET MAXIMUM CENTER TO CENTER. EXPOSED DRAINS SHALL BE LOCATED 3 INCHES ± ABOVE FINISHED GRADE.
 - 2 CUBIC FEET OF TYPE 2 DRAIN BACKFILL ENCAPSULATED IN A GEOTEXTILE FABRIC SECURELY TIED. GEOTEXTILE SHALL MEET THE FOLLOWING:
 - MEET AT LEAST CLASS 2 STRENGTH REQUIREMENTS PER AASHTO M288 TEST METHOD.
 - HAVE AN AOS NOT GREATER THAN U.S. SIEVE NO. 40.
 - HAVE A PERMITTIVITY OF AT LEAST 0.5 SEC.
 - 6 INCH SQUARE ALUMINUM OR GALVANIZED STEEL WIRE MESH HARDWARE CLOTH (4 OPENINGS PER INCH AND MINIMUM WIRE DIAMETER 0.03 INCHES).
- ① PLACE MIRAFI WALL LINER OR AN APPROVED EQUAL BEHIND ALL RETAINING WALLS.



SECTION D-D
CL-1 WEST WALL
 SCALE: 3/8" = 1'-0"



SECTION A-A
CL-1 EAST WALL
 SCALE: 3/8" = 1'-0"